

MET 50

METALLURGICAL MICROSCOPE

nilpa
mumbai

MET 120

METALLURGICAL MICROSCOPE



Specification

Viewing Head	Siedentopf Trinocular head , Inclined at 30°
Interpupillary distance:	55 ~ 75mm
WF10X/18mm	
Eyepiece	WF10X/18mm with 0.1micrometer with cross hair
Nosepiece	Quadruple nosepiece Infinity Plan Achromat objective
Objective	4X/0.1/∞/W.D. 25.4mm 10X/0.25/∞/W.D. 11.0mm 20X/0.40/∞/W.D. 6.0mm 40X/0.60/∞/W.D. 3.7mm 80X/0.90/∞/W.D. 0.2mm
Stage	Double layers size: 150 × 140mm Moving range: 75 × 50mm.
Condenser	Abbe NA.1.25 condenser with iris diaphragm & filter
Focusing	Coaxial coarse and fine focusing adjustment with rack and pinion mechanism
Illumination	EPI-Kohler illumination with aperture iris diaphragm and field iris diaphragm
Filter	220V or 110V/6V-20W halogen lamp, brightness adjustable
	Blue, Green, Yellow, Ground glass polarization is optional
	CAMERA SYSTEM & Metallurgical software Optional

SPECIFICATION

Viewing Head	Compensation Trinocular Head, Inclined at 30°
Interpupillary	50mm -75mm
Distance	Light distribution 0:100
Eyepiece	WF10x/18mm & Wf12.5X Pair
Nosepiece	Quadruple nosepiece Infinity Long working distance Plan 4x/0.10 24mm
Objective	Infinity Long working distance Plan 10x/0.25 11mm Infinity Long working distance Plan 20x/0.40 8.35mm Infinity Long working distance Plan 40x/1.250.12mm Mechanical stage
Stage	Stage size : 150mm x 140mm Moving range : 75mm x 55mm
Stage Plate	Place the sample on the plate
Condenser	Abbe N. A. 1.25 condenser with Iris diaphragm
Focusing	Coaxial coarse and fine focusing knobs
Illumination	12V/50W halogen lamp (Reflected illumination)
Filter	Blue
Stage	Division 0.01mm (Optional)
Micrometer	
Polarizing outfit	Built-in Polarizer & Analyzer (Optional)

ISO 9001:2008
certified company



NILPA CONSULTANCY
2B-SHOBHNA APARTMENT, K V ROAD OFF W S ROAD,
DAHISAR (EAST), MUMBAI-400068-INDIA
TEL: (+91) (22) 2828-2830 FAX: 28280397
Mobile: 9323271441 EMAIL: info@nilpaconsultancy.in

MET 100

METALLURGICAL MICROSCOPE

nilpa
mumbai

MET 300



Specifications	MET 101	MET 102	MET 103	MET 104
Optical System	Infinity Optical System			
Viewing Head	Siedentopf binocular, inclined at 30° Interpupillary distance 50-75mm			
Viewing Head	Siedentopf trinocular, inclined at 30° Interpupillary distance 50-75mm Light distribution: 0:100			
Viewing Head	WF10X/20mm			
Viewing Head	WF10X/18mm			
Viewing Head	WF10X/18mm (Reticule 0.1mm)			
Viewing Head	WF5X			
Viewing Head	WF12.5X			
Viewing Head	WF16X			
Viewing Head	Plan Achromatic 4X/0.10 (S)			
Viewing Head	Plan Achromatic 10X/0.25 (S)			
Viewing Head	Plan Achromatic 20X/0.40 (S)			
Viewing Head	Plan Achromatic 40X/0.65 (S)			
Viewing Head	Plan Achromatic 100X/1.25			
Viewing Head	LWD Plan Achromatic 20X/0.40			
Viewing Head	LWD Plan Achromatic 40X/0.65			
Viewing Head	LWD Plan Achromatic 50X/0.70 (S)			
Viewing Head	LWD Plan Achromatic 80X/0.80 (S)			
Nosepiece	Quintuple, inward			
Stage	Double layers size: 190x140mm with			
Stage Plate	Place the sample on the plate			
Polarizing Set	Built In Polarizer and Analyzer			
Condenser	Abbe Condenser NA=1.25 (with iris diaphragm)			
Collector	Center adjusted, with field diaphragm Koehler Illumination,			
Focusing Unit	Coaxial coarse and fine focusing knobs			
Filter	Blue			
C-mount	1X , 0.5x			
Illuminator	12V 50W halogen lamp (Reflected Illumination)			
Illuminator	6V 20W halogen lamp (Transmitted Illumination)			

Optical System

Viewing Head

Eyepieces

Plan Objectives

Nosepiece

Stage Plate

Polarizing Slide Analyzing Slide

Illuminator

Filters

Micrometer

Infinity Optical System

Seidentopf Trinocular, inclined at 45°, light distribution: 20:80

WF10X/18mm,
WF10X/18mm with reticule, WF5X/20mm
WF12.5X/14mm,
WF16X/13mm

2.5X/0.07, 4X/0.10,
10X/0.25, 20X/0.35 (S),
40X/0.65 (S), 100X/1.25 (S, O)

Quadruple reverse revolving nosepiece

Double Size:

180x165mm, Moving
Range: 50x40mm,
1 (Φ10), 2 (Φ20), 3 (Φ40)

1

2

3

6V/30W halogen lamp,
Spare lamp: 2 pcs, spare fuse: 2 pcs

Blue, Green, Grey, White

Division 0.01mm

Iso 9001:2008
certified Company



NILPA CONSULTANCY

2B-SHOBHNA APARTMENT, K V ROAD OFF W S ROAD,
DAHISAR (EAST), MUMBAI-400068-INDIA
TEL: (+91) (22) 2828-2830 FAX: 28280397
Mobile: 9323271441 EMAIL: info@nilpaconsultancy.in

MET 200
METALLURGICAL MICROSCOPE



MET 400



Viewing Head Trinocular head inclined at 30°, interpupillary distance 48-75mm

Eyepiece High-point , extra wide field eyepiece EW10×/ 20

Infinite Plan Achromatic Objective 4×/ 0.1, 10×/ 0.25, 20×/ 0.40, 40×/ 0.60, 5×/ 0.12,50×/ 0.75, 80×/ 0.90, 100×/ 0.80 Dry

Nosepiece Quintuple nosepiece
Plain stage

Stage Attachable mechanical stage, X-Y coaxial control, moving range 120×78mm
Double layer mechanical stage 226×178mm, Moving range 50×50mm
Auxiliary stage

Focusing Coaxial coarse & fine adjustment, Vertical objective movement, Coarse stroke 37.7mm per rotation, Fine stroke 0.2mm per rotation

Kohler Illumination Halogen lamp 6V/ 30W

Filter Blue, Yellow, Green and Ground Glass

Polarization Attachment
Photo Attachment
Video Adapter
Video adapter with C mount

Optical System Infinity Optical System
Infinity Optical System F=200mm

Viewing Head Seidentopf binocular head, Inclined at 45 ° IPD: 55~75mm
Seidentopf Trinocular head, Inclined at 45 ° IPD: 55~75mm

Eyepiece WF10X/20mm
WF10X/22mm

Nosepiece WF10X/20mm with reticule 0.1mm
Quadruple nosepiece
Quintuple nosepiece

Objective 195 metallurgical objective 4X,10X, 20X, 40X
Infinity metallurgical objective 4X,10X, 20X, 40X
50X/0.75 WD=1.9mm
80X/0.9 (S) WD=0.9mm

Stage Double layers size: 242×172mm
Moving range: 75×50mm
Central Stage 110mm

Condenser Abbe NA=1.25 condenser with iris diaphragm & filter

Focusing Coaxial coarse and fine focusing adjustment with rack and pinion mechanism Fine focusing scale: 0.002mm
Epi-Kohler illumination with aperture iris diaphragm and field iris diaphragm

Illumination Transmission light, 12V 30W. AC85V~230V
Adjustable brightness
Analyzer rotatable 360°, polarizer and analyzer can be swing in / out of the optical path

Polarizing

Filter Blue, green, yellow

Micrometer 0.01mm

Iso 9001:2008
certified Company



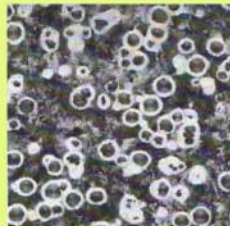
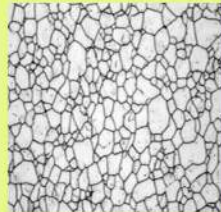
NILPA CONSULTANCY
2B-SHOBHNA APARTMENT, K V ROAD OFF W S ROAD,
DAHISAR (EAST), MUMBAI-400068-INDIA
TEL: (+91) (22) 2828-2830 FAX: 28280397
Mobile: 9323271441 EMAIL: info@nilpaconsultancy.in

Economy Microscope

nilpa
mumbai



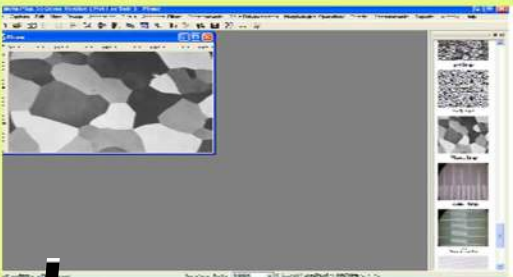
CMOS CAMERA



LCD MONITOR WITH
5MP CAMERA & WIFI

Binocular / Trinocular Head
eyepiece WF 10x/18
Metallurgical Objective 4x/5x, 10x, 20x, 40x, 60x,
Various Camera attachment
Moving stage
6v/20W halogen Loght Source with Varioable
brightness
230V supply

UPGEADABLE for Camera system
Metallurgical Software for Various Parameter
Measurement Like Grain, Porosity, Nodularity
Phase segmentation, particle Count, Graphite Flakes
Coating Thickness many Other parameter



ISO 9001:2008
certified company



NILPA CONSULTANCY
2B-SHOBHNA APARTMENT, K V ROAD OFF W S ROAD,
DAHISAR (EAST), MUMBAI-400068-INDIA
TEL: (+91) (22) 2828-2830 FAX: 28280397
Mobile: 9323271441 EMAIL: info@nilpaconsultancy.in

MET 800

Metallurgical Microscope DIC

nilpa
mumbai



MET5000



		M-DIC-800RF	M-DIC-800TRF	M-DIC-800RF	M-DIC-800TRF
Optical System	Infinite optical system	•	•	•	•
Eyeiece	Extral wide field eyepiece EW10x/22	•	•	•	•
Infinite plan	5x/ 0.12/ ∞/ - (BF)	•	•	•	•
Achromatic Objective	10x/ 0.25/ ∞/ - (BF/DF)	•	•	•	•
	20x/ 0.4/ ∞/ 0 (BF/DF)	•	•	•	•
	50x/ 0.75/ ∞/ 0 (BF)	•	•	•	•
	100x/ 0.8/ ∞/ 0 (BF)	•	•	•	•
	40x/ 0.65/ ∞/ 0.17	•	•	•	•
	100x/ 1.25/ ∞/ 0.17	•	•	•	•
	5x/ 0.12/ ∞/ - (BF/DF)	•	•	•	•
	40x/ 0.6/ ∞/ 0 (BF/DF)	•	•	•	•
	50x/ 0.75/ ∞/ 0 (BF/DF)	•	•	•	•
	100x/ 0.8/ ∞/ 0 (BF/DF)	•	•	•	•
DIC	20x, 100x	•	•	•	•
Maximum Sample Height	30mm	•	•	•	•
	50mm	•	•	•	•
Viewing Head	Siedentopf trinocular viewing head, inclined at 30°, interpupillary distance 48mm-75mm	•	•	•	•
	24V/100W Halogen light, lightness adjustable	•	•	•	•
	Kohler Illumination and aspherical condenser	•	•	•	•
	Polarizer and analyzer	•	•	•	•
	An integrate device foe polarizer and analyzer	•	•	•	•
	Blue, Green, Yellow and Ground glass	•	•	•	•
Incident light Transmitted light	Svng-out condenser N/A0.9/ 0.25	•	•	•	•
	24V/ 100W Halogen light and aspherical condenser	•	•	•	•
Filter	Blue filter ND25, ND6	•	•	•	•
Focusing	Coaxial coarse and fine adjustment, fine division Iµm	•	•	•	•
Nosepiece	Backward quintuple nosepiece	•	•	•	•
	Non-porous double layer mechanical stage 186X138mm/74mmX50mm	•	•	•	•
	Double layer mechanical stage 186x138mm/74mmx50mm	•	•	•	•
	Glass specimen preparation plate	•	•	•	•
	Specimen preparation plate	•	•	•	•
Stage Specimen Presser	Slide glass	•	•	•	•
Photo Attachment		•	•	•	•
Video Attachment	C Mount 1x, 0.5x	•	•	•	•

Optical system	infinity Optical System
	EW10x/22
Extra Wide Field Eyepiece	EW10x/20, EW10x/20 eyepiece with Scale of cross hair
	EW15x/16
	EW20x/12
Infinite LWD plan	5x/ 0.12/ ∞/ - (BF)
Achromatic Objective	10x/ 0.25/ ∞/ - (BF/DF)
	20x/ 0.4/ ∞/ 0 (BF/DF)
	50x/ 0.75/ ∞/ 0 (BF/DF)
	100x/ 0.8/ ∞/ 0 (BF/DF)
DIC	20x, 100x
Viewing Head	Siedentopf Binocular Viewing Head, Inclined 30°, interpupillary distance 48-75mm
Kohler Incident Light	12V/50W halogen Light , Center & Brightness Adjustable
	Polarizer and Analyzer
Filters	Inbuilt Blue, Green, Yellow, Gray and Ground Glass
Focussing	Coaxial Coarse and fine adjustment, Fine division 2µm
Nosepiece	Backward Quintuple nosepiece
Stage	Double Layer Mechanical Stage, 226x178mm, Moving range 40mmx 40mm φ20,φ30, Teardrop
Accessories	Photo/ Video Attachment , Metallurgical Software
	Various Camera, Micrometer Scale 0.01mm

ISO 9001:2008
certified company



NILPA CONSULTANCY
2B-SHOBHNA APARTMENT, K V ROAD OFF W S ROAD,
DAHISAR EAST, MUMBAI 400068-INDIA
TEL: +91 (22) 2828 2830 FAX: +91 (22) 28280397
EMAIL: nilpacon@yahoo.com, info@nilpaconsultancy.in
web: nilpaconsultnacy.in, nilpaconsulncy.ne