



# CREATIVE ENGINEERS



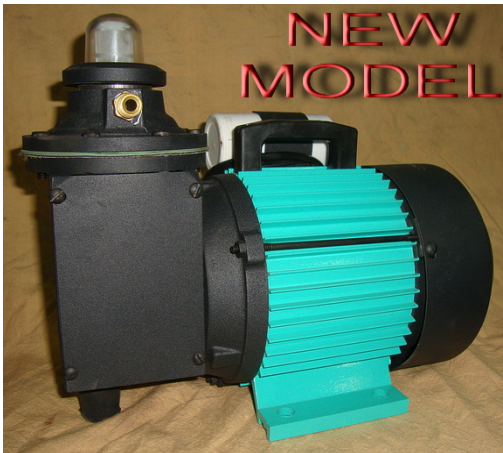
1<sup>ST</sup> FLOOR, ABOVE BHAIRAVNATH POST OFFICE,  
OPP-PRAGATI SOC, NR MEERA CROSS ROAD,  
BHAIRAVNATH, MANINAGAR  
AHMEDABAD-380028

PH:- 079-25431453 , 8140179903

EMAIL ID :- [info@sspumpsindia.com](mailto:info@sspumpsindia.com) , [malharpumps@gmail.com](mailto:malharpumps@gmail.com)  
[www.sspumpsindia.com](http://www.sspumpsindia.com)

## LPG PUMPS SPECIFICATIONS:

### AC LPG PUMP



### AC LPG PUMP WITH SPARES



## AC LPG PUMP TECHNICAL SPECIFICATIONS:-

Pump Type:- AC (Electric supply) LPG Diaphragm Pump,

Pump Make:- "MALHAR"

Pump Model:- MD-AC-1 ,

Suction x Delivery Sizes:- 1/4 " x 1/4 " ,

Pump Capacity :- 15 kg/7 Minute I.E 2.14 kg/Minute,

Maximum Pressure :- 22 kg/cm<sup>2</sup>,

Pump Weight :- 16 kg approx

### Material Of Construction :-

Standard Cast Iron Construction,

### AC Motor Specifications:-

**0.5 hp x 1450 rpm** , **Non Flame Proof Motor** Totally enclosed Fan cooled Squirrel cage Induction Motors Horizontal Foot mounted B3 Construction, Continuously rated S1 Duty suitable for single phase , 220 volts , 50 Hz , AC Supply (**110 volts or 60 Hz Available on request**) with ambient 45°C & class "F" Insulation.

### SCOPE OF SUPPLY:-

Ac lpg Pump With Suction and Delivery Pipes with Valve, Regulator and extra Diaphragm.

## **FLAME PROOF AC LPG PUMP**



Usefull for  
industrial  
applications

### **FLAME PROOF AC LPG PUMP TECHNICAL SPECIFICATIONS:-**

Pump Type:- AC (Electric supply) LPG Diaphragm Pump With flp motor,

Pump Make:- “MALHAR”

Pump Capacity :- 15 kg/7 Minute I.E 2.14 kg/Minute,

Pump Model:- MD-AC-FLP-1 ,

Suction x Delivery Sizes:- ¼ ” x ¼ ”,

Maximum Pressure :- 22 kg/cm<sup>2</sup>

Pump Weight :- 24 kg approx,

#### **Material Of Construction :-**

Standard Cast Iron Construction,

#### **Motor Specifications:-**

0.5 HP X 1450 RPM, “MALHAR” , OR Equivelent Make **NON CMRI Flame Proof**

**Electric Motor Foot Mounted** (B3 Construction) Totally Enclosed Fan Cooled Suitable for 415 volt ,50 Hz , 3 phase Supply with class “1” Division – 2 , Group-D Insulation Degree of Protection IP-55 as per IS:4691 with bare shaft & key , Continuous rated S1 Duty & suitable for Gas groups I , IIA , IIB as per IS: 2148-1981 copper winding.

**If Required we will give you CMRI CERTIFIED “PEW” OR “CROMPTON” Make also.**

#### **SCOPE OF SUPPLY:-**

FLP AC lpg Pump With Suction and Delivery Pipes with Valve, Regulator and extra Diaphragm.

## **DC LPG PUMP**



### **DC LPG PUMP TECHNICAL SPECIFICATIONS:-**

Pump Type:- 12 Volt DC (Battery Operated ) LPG Diaphragm Pump,

Pump Make:- “MALHAR”

Pump Model:- MD-DC-1,

Suction x Delivery Sizes:- ¼ ” x ¼ ”,

Pump Capacity :- 15 kg/7 Minute I.E 2.14 kg/Minute,

Maximum Pressure :- 22 kg/cm<sup>2</sup>,

Pump Weight :- 16 kg approx

### **Material Of Construction :-**

Standard Cast Iron Construction,

### **DC Motor Specifications:-**

12 Volt DC PMDC Motor suitable for above pump, Take approximately 3 ampere current.

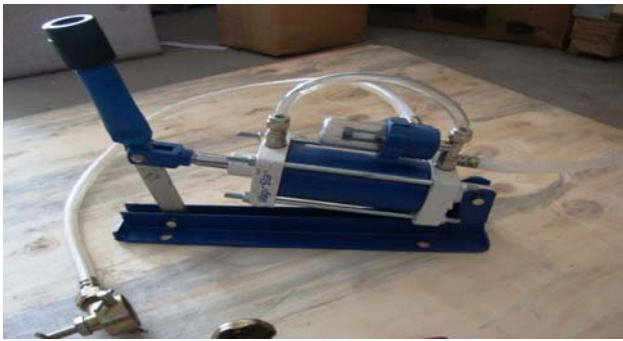
### **SCOPE OF SUPPLY:-**

Dc lpg Pump With Suction and Delivery Pipes with Valve, Regulator and extra Diaphragm.

## **AC LPG PUMP AND DC LPG PUMP SPARES**



## **MANUAL LPG PUMP**



## **MANUAL LPG PUMP TECHNICAL SPECIFICATIONS**

Pump Type:- Manual LPG Pump Piston Type 4 way non Return Valve Arrangement,

Pump Make:- "MALHAR",

Pump Capacity :- 15 kg/15 Minute i.e. 1 kg/Minute , depend on nos of stroke per minute,

Pump Model:- MMLPG-1,

Suction X Delivery sizes:- 1/4 " x 1/4 " ,"

Maximum Pressure :- 20 kg/cm<sup>2</sup>

Pump Weight :- 6 kg approx

### **Material Of Construction :-**

Standard Cast Iron Construction,

**SCOPE OF SUPPLY:-**Manual lpg Pump With Suction and Delivery Pipes with Valve , Regulator, extra piston ring and Handle will come separately

# ROTARY VANE LPG PUMP



## ROTARY VANE PUMP TECHNICAL SPECIFICATIONS

Pump Type:-Rotary Vane Pump,  
Pump Make:- “MALHAR”  
Pump Model:- RV-1,  
Inlet x Outlet size :- ½” x ½”BSP,  
Pump Capacity :- 7 kg/minute,  
Maximum Pressure :- 15 kg/cm<sup>2</sup>,  
Pump Weight :- 5 kg approx (with out motor)

### Material Of Construction :-

Standard Cast Iron Construction With Bronze Vane,

### Required Motor Specifications:-

1 hp x 2900 rpm , Non Flame Proof Motor Totally enclosed Fan cooled Squirrel cage Induction Motors Horizontal Foot mounted B3 Construction, Continuously rated S1 Duty suitable for single phase , 220 volts , 50 Hz , AC Supply (110 volts or 60 Hz Available on request) with ambient 45°C & class “F” Insulation.

**OR**

**IF YOU REQUIRED ROTARY VANE PUMP WITH FLP MOTOR**

### Required FLAME PROOF Motor Specifications:-

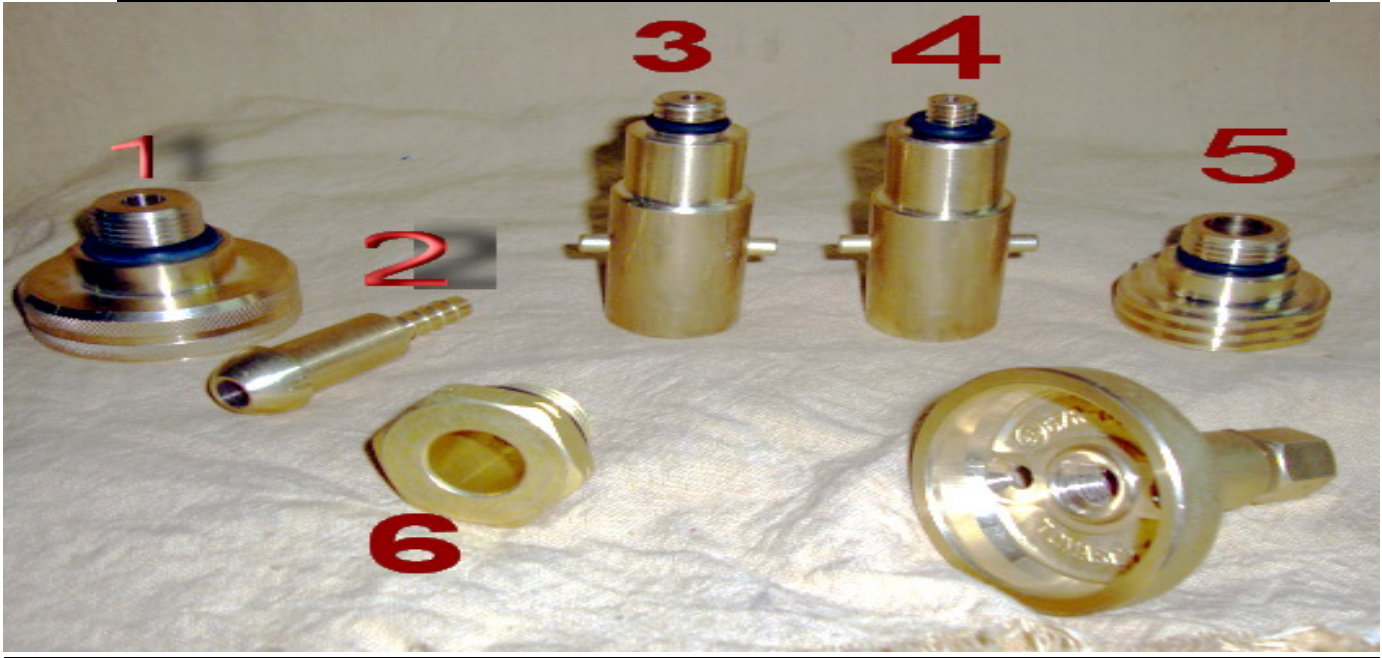
1 HP X 2900 RPM, “MALHAR” , OR Equivelent Make **NON CMRI** Flame Proof Electric Motor Foot Mounted (B3 Construction) Totally Enclosed Fan Cooled Suitable for 415 volt ,50 Hz , 3 phase Supply with class “1” Division – 2 , Group-D Insulation Degree of Protection IP-55 as per IS:4691 with bare shaft & key , Continuous rated S1 Duty & suitable for Gas groups I , IIA , IIB as per IS: 2148-1981 copper winding.

If Required we will give you CMRI CERTIFIED “PEW” OR “CROMPTON” Make also

## SCOPE OF SUPPLY:-

Rotary vane Pump only (with motor or with out motor)

## **WE ALSO GIVE EUROPIAN FITTINGS FOR LPG CAR**



## **TERMS AND CONDITIONS :-**

**TAX :- 5% VAT EXTRA**

**F O R :- Ex-our works, Ahmedabad on Freight TO PAY basis**

**DELIVERY :- Within 8 to 10 days after receipt of your clear written PURCHASE ORDER**

**PAYMENT :- 100% against proforma invoice.**

**VALIDITY :- 30 Days from offer date.**

# LPG PUMP INSTRUCTIONS

**CAUTION : DO NOT SMOKE / USE MOBILE WHILE USING PUMP**

1. Bring Pump Out Carefully From Box
2. Start The Pump without Connecting Pipes and check Inlet & Out let.
3. Vacuum on One side and pressure on other side .It is in & Out of Pump.
4. Place Pipe (1) at In & Out Pipe (2) At Out Side
5. Turn Bottle Down and Fix Pipe
6. Put Pipe (2) to Another Bottle / Car
7. Now Start Open Valve Of Pipe (1)
8. Also Open Valve Of Pipe-2
9. Start Pump.
10. You can see Liquid Transfer from Pump through Glass
11. In case If Pressure Exceed, Up To 10 Kg/cm<sup>2</sup>, Then Gas will By Pass and Transfer in to Inlet Pipe Again.
  12. If Sometime Pressure Increase more than 20kg/cm<sup>2</sup>, Then Stop Pump Immediately, Also sometime pump may stop automatically but some time Diaphragm may Rapture.
13. Bottle Empty, Pump Noise will be Different and also you can see No Liquid Transfer in Glass
14. Now stop pump, Remove suction & Delivery pipe from bottle & car put Pump in Box
15. Video of Transfer of gas / changing Of Diaphragm enclosed.

**PRECAUTION :- Never Closed Delivery side Valve when pump is running , otherwise Diaphragm will be damaged.**

# **FAQ FOR LPG PUMP**

**1. ARE THESE PUMPS SAFE : ? :**

Yes it is 100 % safe, however you have to follow certain safely rules like pipe threads must be tight fully to avoid gas leakage, open & close valve timely, do not use match box, lighter, cigar, mobile & any thing which create spark near the gas transfer pump.

**2. CAN I RUN THIS PUMP DRY: ?**

Yes you can run manual & diaphragm pump but you can not run vane pump dry for more than 2 minutes otherwise vanes get damaged or pump get jammed.

**3. CAN I TRANSFER GAS FROM ONE TANK TO ANOTHER TANK ?**

Yes you can transfer gas from bigger tank to smaller tank but not from smaller tank to bigger tank as you need higher pressure pump for such application

**4. CAN I USE THESE PUMP AS GAS / AIR SAMPLING PUMP. ?**

Yes our diaphragm pump can be used as gas sampling or air sampling pump.

**5. IS GAS TRANSFER IS LEAGAL ?**

It is ill-legal in India if you transfer LPG from Govt owned cylinder to your car cylinder. It is advisable to go LPG filling station in India, however in most of the other countries, it may be allowed

**6. ARE THESE PUMPS SUPPLIED WITH PIPE ?**

Yes all pumps are supplied with suction pipe with valve suitable for cylinder and delivery pipe with gun suitable for car.

**7. WHAT OTHER PARTS SUPPLIED WITH PUMPS ?**

Manual pumps come along with washer / rubber rings.  
Diaphragm pumps come along with extra diaphragm  
Vane pumps come along with extra vane & seals.

**8. CAN I BUY THESE PUMPS WITH FLAMEPROOF OR EXPLOSION PROOF MOTORS?**

Yes all pumps can be available with flame proof / explosion proof single/three phase motor

**9. ARE TOU ABLE TO OFFER PUMP IN 60 Hz OR DIFFERENT VOLTAGE?**

Yes we also offer pump in 60 Hz / 50 Hz and in 110 volts / 210 volts / 380 volts as per customer's requirements.



**10. HOW CAN YOU SEND THESE PUMPS?**

We send these pumps by post / courier / ship as per customer's requirement.

**11. HOW CAN I PAY ?**

You can send payment by TT / DD to our following bank account.

you can pay us by paypal ,just visit our website [www.sspumpsindia.com](http://www.sspumpsindia.com)

**12. FROM OUT SIDE INDIA BANK DETAILS**

**Account Name :- Creative Engineers**

**Beneficiary Account – 0009LS1631051**

**Beneficiary Bank : INDUSIND BANK**

**Beneficiary Swift Code : INDBINBBAHA**

**Kindly use correspondence bank as following**

**Wachovia Bank , New York,U.S.A**

**INDUSIND Bank A/C - 2000191075023**

**Corr Bank Address : New york , U.S.A,Swift Code : PNBPU33NNYC**

**Fedwire Code (ABA NO ) : 026005092**

**13. For Inside India ICICI BANK**

**ICICI BANK :**

**Account Name : Creative Engineers**

**Account no : 624405027997**

**Bank Address : Ground Floor, poonam plaza, rambaud, Maninagar,Ahmedabad : 380028, India**

**IFSC CODE : RTGS / NEFT IFSC Code : ICIC0006244.**

**MICR CODE :-380229005**

**14.** Or you can also pay up to 500 USD by paypal /credit card visit [www.sspumpsindia.com](http://www.sspumpsindia.com) and see home page, left corner at end of page. You can see “ pay on line “ click fill details and send payment, send your full address , pin code (zip code )along with phone no

**15. CAN I USE CAR BATTERY TO RUN PUMP ?**

Yes in DC pump you have to use your car battery to drive pump.

**15. HOW MUCH TIME IT WILL TAKE TO TRANSFER?**

Please refer data sheet or each pump **GAS**

Manual pump 12-/14 minutes

Diaphragm Pump 7/8 minutes

Vane pump 1 / 2 minutes

**16. IT WILL TRANSFER FULL GAS ?**

Very small gas remain in the bottle at last because bottle is full of liquid, and During transfer of liquid, last liquid portion converted in to gas. Which remain on upper part of cylinder so approx 2 to 3 % gas remain in the cylinder.

**17. CAN I REPAIR PUMP AT MY PLACE ?**

Yes any ordinary person can repair pump at home without any problem detail CD – Rom given with the pump.

**18. DO YOU HAVE BIGGER PUMP FOR GAS TRASFER ?**

Yes we have bigger pump for gas transfer we give centripetal and vane pump for such application.

**19. CAN I CARRY THESE PUMPS, WITH ME ?**

Yes all pumps are small in size and you can easily carry / lift the pump any where.  
CETNTRIPETAL AND VANE PUMPS ARE HEAVY

**20. CAN I USE FOR OTHER APPLICATION ?**

Yes these pumps are also used for spraying liquids in farms. as sprayer pump.

**21. WHAT WILL BE THE FRIEGHT ?**

It is depend up on location, check with your local courier freight from Ahmedabad , India as well.

**22. IN HOW MANY DAYS YOU DELIVER PUMP?**

We normally, take 6 / 7 days time for shipping of products. if quantity Is more then we take some more time.

**23. WHAT IS THE WARRANTY ?**

We give one year warranty for products. however it's not applicable to diaphragm , capacitor , seal & bearings and vane

**24. ARE SPARES EASILY AVAILABLE ?**

Yes spares are easily available within 24 hours.

**25. WHICH IS THE BEST MODEL ?**

We recommended manual as it is more convient work without electricity and provided exercise to user.


**26. WHY CYLINDER MUST BE IN DOWNWARD DIRECTION WHILE TRANSFERING LPG ?**

Because LPG is in liquid form only, upper portion of cylinder has some gas on upper part, so when you turn cylinder downward direction, liquid came Nearer to outlet portion or cylinder so gas transfer become easy.

**27. WHAT IS THE LIFE OF PUMP ?**

Until invention of new engine which run on air or water .

**Thanking you,  
Gaurang shah**



**Yours faithfully  
For, CREATIVE ENGINEERS**