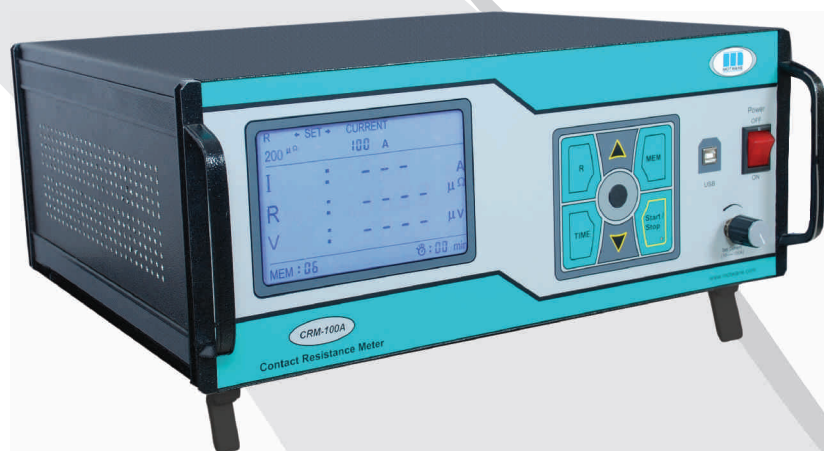


## Features

- High resolution and accuracy
- Selectable test current of 10A, 20A, 50A & 100A
- Real time display current and resistance
- Data management software
- Built-in Memory of 99 test result



# CRM-100A

## Contact Resistance Meter

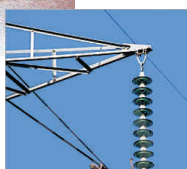
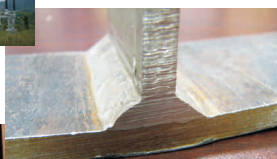
The Motwane make Contact Resistance Meter-CRM-100A is a digital micro ohmmeter, designed to measure extremely low resistances. The Instrument is based on the proven 4-wire measurement method for low resistances to eliminate the effect of lead resistance of 2 wires method. The instrument is designed to replace complex bridge set up with a single compact unit. The D.C current injection in step of 10A, 20A, 50A & 100A. The testing information is displayed on large LCD with backlit, real time data is displayed during the test ON condition. The instrument gives a high resolution of  $0.1\mu\Omega$  on  $200\mu\Omega$  resistance range. The instrument is easy to operate and user friendly. Accessories are rugged and come with heavy duty clips for better grip on test object. The kit and accessories are housed in a trolley mounted casing for easy transportation. Advanced Windows based software is provided for data downloading, analysis and report generation. The instrument can be operated through software. Internal memory is provided for onsite data storage. It is typically suitable for non energised environment and should not be used in interference area of high voltage .

## Applications

CRM-100A has a large application for direct and indirect measurements in various industries and manufacturing facilities. High accuracy makes it a reliable tool for Quality Assurance and easy operation makes it a very handy tool for quick maintenance checks for process industries

Typical resistance measurement applications are:

- Circuit Breaker contact resistance in laboratories
- Electrode resistance measurement
- Bus bar joints
- Isolator contacts
- Cable drum resistance measurement
- Cable splice
- Weld joints
- Bond resistance



## CRM-100A General Specification

- Principle : 4 wire measurement
- Display : 3½ digit large LCD display for resistance
- Keypad : Heavy duty sealed soft touch membrane keypad
- Test ON indication : LED and Beep
- Over range indication : Blinking OL display
- Mains ON indication : Mains power ON indicator

## Technical Specification

### Power Supply

- Input power : 230V ± 10%, 50Hz, 1Ø

### Test Specification

- Current Injection : Steps of 10A, 20A, 50A & 100A
- Resolution : 0.1A
- Open-Circuit Voltage : 5V DC
- Output power : 500VA

### Resistance Measurements

Resistance ranges	200μΩ	2mΩ	20mΩ
Resolution	0.1μΩ	1μΩ	10μΩ
Accuracy	±(0.5%+5 digits)		

### Operation Time

- Continuous Operation up to 50A
- 4 minutes-ON and 10 minutes-OFF for 100A

### Environmental Specifications.

- Operating Temperature : 0°C to 55°C
- Storage Temperature : -10°C to 55°C
- Humidity : < 90% RH, Non condensing

### Physical Specifications

- Dimensions ( D x W x H ) : 365mm x 426mm x 177.8mm
- Net Weight : Instrument: 12 Kg
- Test Cables : 5.3 Kg
- Packing case : 9.5Kg
- Gross Weight : 26.8 Kg approx.

## Accessories

### Standard Accessories

- Set of testing leads (10m) : 1 Set (4Nos)
- Mains power cord : 1 No.
- User Manual : 1 No.
- Calibration Sheet : 1 No.
- Carrying Case : 1 No.

### Optional Accessories

- Software CD : 1 No.
- USB Cord : 1 No.



### Notes

1. The Instrument is accompanied with Test & calibration sheet. 2. Test Facilities can be provided at the factory with the available test set-ups only. 3. The Company's policy is continuous improvement of its products. we therefore reserve the Right of any deviation from illustration or specifications without notice. 4. Stated accuracies are valid from 1/10th of range to FS. 5. Accuracy Specified for temperature range of 25°C ± 5°C & 55%RH ± 10%.

Designed and Manufactured by:

**The Motwane Manufacturing Company Pvt. Ltd.**

Gyan Baug, Motwane Road, Nashik 422101, Maharashtra, India.

Tel. No.: +91-253-2463752 / 53 Fax.: +91-253-2463197 Toll Free: 1800 - 233 - 7766

e-mail: sales@motwane.com visit : www.motwane.com

