

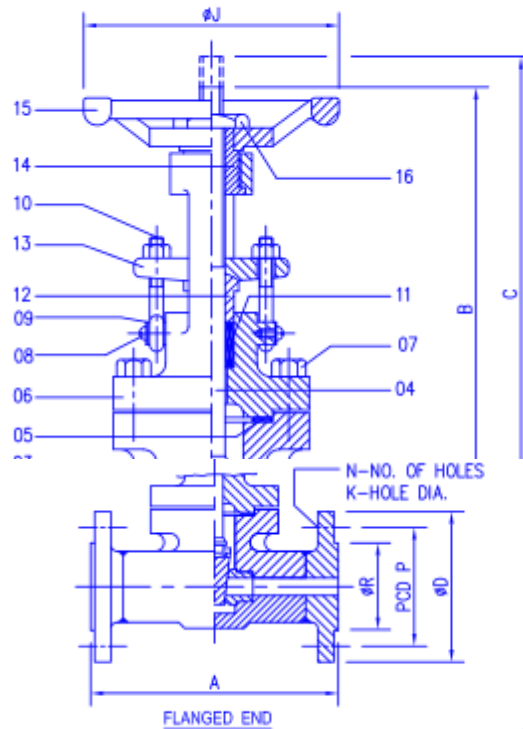
FORGED STEEL GATE VALVES

CLASS
800 / 150 / 300



TECHNICAL DATA

MANUFACTURING STD.: API 602
 TESTING & INSPECTION STD.: API 598/BS 6755 PART 1
 SOCKET WELD AND THREADED TO: ANSI B 16.11/ANSI B 2.1
 FLANGED TO: ANSI B 16.5/BS 1560
 FLANGE TO FLANGE DISTANCE: ANSI B 16.10



TEST PRESSURE	
BODY	SEAT
3000 PSIG	2000 PSIG
AIR TEST OF SEAT AT 100 PSIG	

P. NO.	ITEM	QTY.	MATERIAL
01	BODY	1	A 105
			A 182 (F 304)
			A 182 (F 316)
02	WEDGE	1	AISI 410/AISI 304/AISI 316
03	SEAT RING	1	AISI 410/AISI 304/AISI 316
04	STEM	1	AISI 410/AISI 304/AISI 316
05	GASKET	1	SPIRAL WOUND S.S. 304 WITH CAF FILLER
06	BONNET	1	A 105
			A 182 (F 304)
			A 182 (F 316)
07	BODY STUD/NUT	Req.	ASTM A 193 Gr. B7
			ASTM A 194 Gr. 2H
08	CAP HEAD SCREW	2	CARBON STEEL
09	WASHER	2	CARBON STEEL
10	EYE BOLTS/NUTS	2	CARBON STEEL
11	GLAND PACKING	6 MIN.	ASBESTOS GRAPHITED WITH INCONEL WIRE
12	GLAND BUSH	1	AISI 410/AISI 304/AISI 316
13	GLAND PLATE	1	CARBON STEEL
14	YOKE SLEEVE	1	AISI 304/AISI 316/EN 19
15	HAND WHEEL	1	MALLEABLE IRON

ASA - 150							
SIZE	A	Ø D	R	P	N	Ø K	T
15	108	89	35	60	4	16	11
20	118	98	43	70	4	16	13
25	127	108	51	79	4	16	14
40	165	127	73	98	4	16	14
50	178	152	92	121	4	19	16

ASA - 300							
SIZE	A	Ø D	R	P	N	Ø K	T
15	140	95	35	67	4	16	14.0
20	152	118	43	83	4	19	16.0
25	165	124	51	89	4	19	17.5
40	191	155	73	114	4	19	21.0
50	216	165	92	127	8	22	22.0

ALL DIMENSION ARE IN MM

AVM Engineers

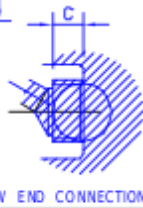
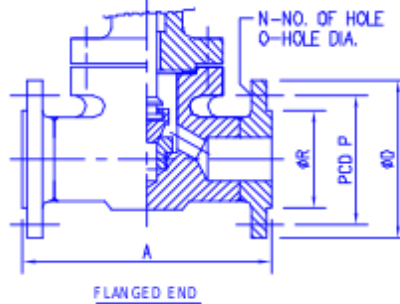
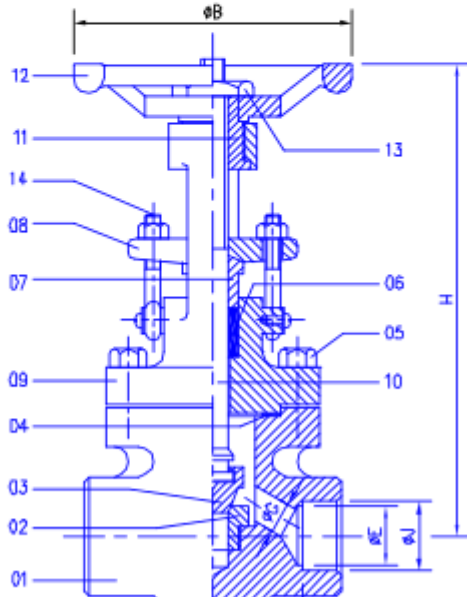
FORGED STEEL GLOBE VALVES

CLASS
800 / 150 / 300



TECHNICAL DATA

MANUFACTURING STD.: BS 5352/MSS SP 84-1985
 TESTING & INSPECTION STD.: API 598/BS 6755
 SOCKET WELD AND THREADED TO: ANSI B 16.11/ANSI B 2.1
 FLANGED TO: ANSI B 16.5/BS 1560
 FLANGE TO FLANGE DISTANCE: ANSI B 16.10



TEST PRESSURE	
BODY	SEAT
3000 PSIG	2000 PSIG
AIR TEST OF SEAT AT 100 PSIG	

P. NO.	ITEM	QTY.	MATERIAL
01	BODY	1	A 105 A 182 (F 304) A 182 (F 316)
02	SEAT	1	AISI 410/AISI 304/AISI 316
03	VALVE	1	AISI 410/AISI 304/AISI 316
04	GASKET	1	SPIRAL WOUND S.S. 304 WITH CAF FILLER
05	BODY BOLTS/NUTS	Req.	ASTM A 193 Gr. B7 ASTM A 194 Gr. 2H
06	GLAND PACKING	6 MIN.	ASBESTOS GRAPHITED WITH INCONEL WIRE
07	GLAND BUSH	1	AISI 410/AISI 304/AISI 316
08	GLAND PLATE	1	CARBON STEEL
09	BONNET	1	A 105 A 182 (F 304) A 182 (F 316)
10	STEM	1	AISI 410/AISI 304/AISI 316
11	YOKE NUT	1	AISI 304/AISI 316/EN 19
12	HAND WHEEL	1	MALLEABLE IRON
13	HAND WHEEL NUT	1	CARBON STEEL
14	EYE BOLT/NUT	1	CARBON STEEL

SCREWED / SOCKET WELD								
SIZE	A	B	C	E	F	G	H	J
15	87	85	13.5	15	10	9.5	165	22.0
20	95	85	14.0	20	13	12.7	175	27.0

ASA - 150							
SIZE	A	D	R	P	N	O	T
15	108	89	35	60	4	16	11
20	118	98	43	70	4	16	13
25	127	108	51	79	4	16	14
40	165	127	73	98	4	16	14
50	203	152	92	121	4	19	16

ASA - 300							
SIZE	A	D	R	P	N	O	T
15	152	95	35	67	4	16	14.0
20	178	118	43	83	4	19	16.0
25	203	124	51	89	4	19	17.5
40	229	155	73	114	4	19	21.0
50	267	185	92	127	8	22	22.0

ALL DIMENSION ARE IN MM

AVM Engineers

FORGED STEEL CHECK VALVES

CLASS
800 / 150 / 300



TECHNICAL DATA

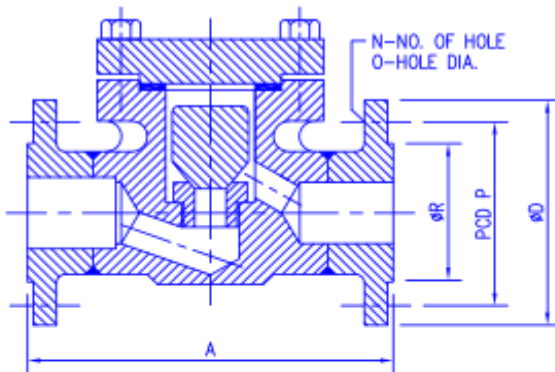
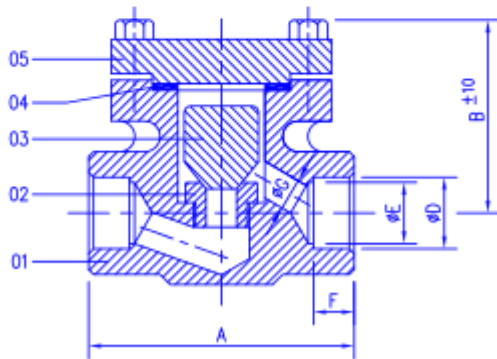
MANUFACTURING STD.: BS 5352

TESTING & INSPECTION STD.: API 598/BS 6755

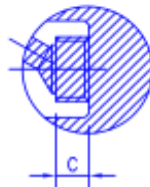
SOCKET WELD AND THREADED TO: ANSI B 16.11/ANSI B 2.1

FLANGED TO: ANSI B 16.5/BS 1560

FLANGE TO FLANGE DISTANCE: ANSI B 16.10



FLANGED END



SCREW END CONNECTION

P. NO.	ITEM	QTY.	MATERIAL
01	BODY	1	A 105 A 182 (F 304) A 182 (F 316)
02	SEAT RING	1	AISI 410 AISI 304 AISI 316
03	VALVE	1	AISI 410 AISI 304 AISI 316
04	GASKET	1	SPIRAL WOUND S.S. 304 WITH CAF FILLER
05	COVER	1	A 105 A 182 (F 304) A 182 (F 316)

ASA - 150								
SIZE	A	B	D	R	P	N	O	T
15	108	61	89	35	60	4	16	11
20	118	67	98	43	70	4	16	11
25	137	67	108	51	79	4	16	13
40	165	95	127	73	98	4	16	14
50	203	110	152	92	121	4	19	16

ASA - 300								
SIZE	A	B	D	R	P	N	O	T
15	152	61	95	35	67	4	16	14.0
20	178	67	118	43	83	4	19	16.0
25	203	67	124	51	89	4	19	17.5
40	229	95	155	73	114	4	19	21.0
50	267	110	165	92	127	8	22	22.0

SCREWED / SOCKET WELD							
SIZE	A	B	C	E	F	G	H
15	87	61	13.5	22.0	15	10	9.0
20	95	67	14.0	27.0	20	13	12.0
25	106	67	14.0	27.0	20	13	12.0
40	140	95	18.5	48.5	40	15	29.5
50	144	110	19.5	61.0	50	16	35.0

TEST PRESSURE	
BODY	SEAT
3000 PSIG	2000 PSIG
AIR TEST OF SEAT 100 PSIG	

ALL DIMENSION ARE IN MM

AVM Engineers