

BUTTERFLY VALVES

LEVER / GEAR / PNEUMATIC
ACTUATOR / ELECTRIC ACTUATOR



TECHNICAL DATA

SPECIFICATIONS :

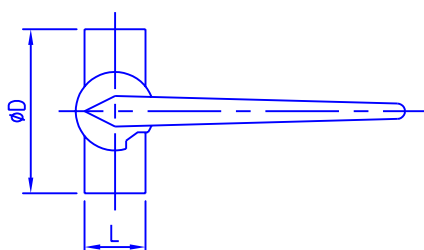
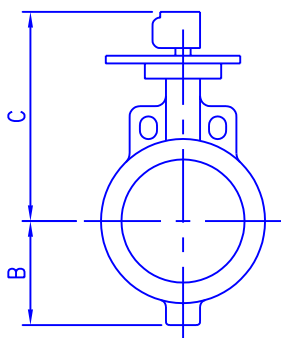
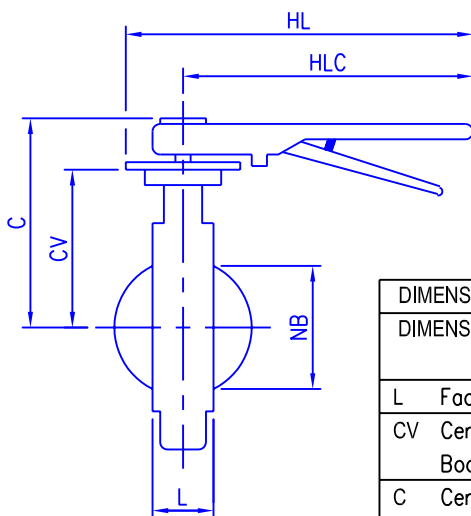
SIZE RANGE : 50 TO 400 M.M.
PRESSURE RATING : 16 BAR MAX (232 PSI)
TEMP. RATING : MATERIAL WILL BE SELECTED
ACCORDING TO SERVICE.

MATERIALS OF CONSTRUCTION :

BODY	C.I. TO IS 210 Gr. FG 220/A 351 CF8/CF8M AISI 304/AISI316
DISC	C.I. TO IS 210 Gr. FG 220/A 351 CF8/CF8M AISI 304/AISI 316 NYLON COATED AS PER CLIENT'S SPECIFICATION (ON SPECIFIC ORDER AT EXTRA COST)
SEAT	NITRILE RUBBER, NEOPRENE, EPDM, SILICON, & TEFLON COATING ON THE BODY
SHAFT	AISI 410 (HEAT TREATED) AISI 304/AISI 316 ALSO AVAILABLE WITH SPECIAL FRICTION- LESS TEFLON PTFE COATING

SEAT	
EPDM	-20°C +120°C
NBR	-10°C +80°C
HYPALON	-20°C +135°C

SEAT	
VITON	-18°C +150°C
SILICON	-20°C +180°C
TEFLON	-20°C +140°C



DIMENSIONAL DETAILS												
DIMENSIONS	VALVE SIZE	50	65	80	100	125	150	200	250	300	350	400
		2"	2.5"	3"	4"	5"	6"	8"	10"	12"	14"	16"
L	Face to Face	43	45	46	52	54	56	60	68	78	78	102
CV	Centre line to top of Body platform	140	153	160	178	194	203	239	271	310	318	370
C	Centre line to top of Flow control lever	182	194	201	218	234	242	305	338	377	510	637
B	Centre line to bottom	65	78	85	105	117	144	169	364	272	329	364
D	Maximum dia. of body	102	111	130	162	194	216	273	489	382	438	489
HL	Maximum length of valve Flow control lever	300	300	300	300	300	300	620	620	620	-	-
HLC	Length of fitted operator Flow control lever	190	190	190	300	300	300	425	425	425	-	-
NB	Dia. of protruding Disc	28	47	67	82.5	107	136	184.5	234	280	328	377
P	Protusion of Disc	4	10	16	23	32	45	67	86	106	130	144

TESTING : BODY : 24 BAR – 348 PSIG
SEAT : 16 BAR – 232 PSIG

STANDARDS :

Valve comply with BS 5155, API 609, MSS SP 67 and Valves designed to fit without gaskets between flanges drilled to ANSI 125, DIN, ND 10/16, BS 10 tables D, E, and F or BS 4505 PN 10/16, Table 6, 7, & 8 of IS:6418 and Tables 11, 15 & 17 of IS:6392

ENGINEERING OPTIONS :

1. GEAR OPERATION ON REQUEST.
2. PNEUMATIC / MOTORISED ACUATION ON REQUEST.
3. EXTENTION SPINDLE, CHAIN-WHEEL ARRANGEMENT ON REQUEST.

ALL DIMENSION ARE IN MM

AVM Engineers