

BALL VALVE

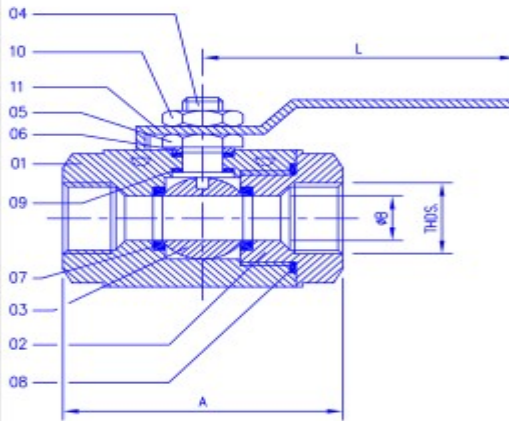
CLASS
150 / 300



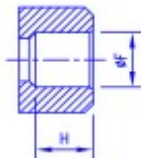
SINGLE PIECE BALL VALVE SCREW END

TECHNICAL DATA
 DESIGN & MANUFACTURING STD.: BS 5351, API 602
 TESTING & INSPECTION STD.: API 598/BS 5146/BS 6755 PART-1
 FACE TO FACE: AS PER ANSI B 16.10
 END CONNECTIONS: SCREWED: (BSP, BSPT, NPT)
 SOCKET WELD: ANSI B 16.11/ ANSI B 2.1

P. NO.	ITEM	QTY.	MATERIAL
01	BODY	1	ASTM A 216 Gr. WCB C.I. TO IS 210 Gr. FG 220 AISI 304 OR CFB (I.C.) AISI 316 OR CFBM (I.C.) ASTM A 105 (FORGED)
02	BODY CONNECTOR	1	ASTM A 216 Gr. WCB C.I. TO IS 210 Gr. FG 220 AISI 304 OR CFB (I.C.) AISI 316 OR CFBM (I.C.) ASTM A 105 (FORGED)
03	BALL	1	AISI 304/AISI 316
04	STEM	1	AISI 304/AISI 316
05	GLAND NUT	1	AISI 304/AISI 316
06	GLAND BUSH	1	AISI 304/AISI 316
07	SEAT RING	2	PTFE OR FILLED PTFE
08	BODY SEAL	2	PTFE OR FILLED PTFE
09	STEM SEAL	2	PTFE OR FILLED PTFE
10	LOCK NUT	1	AISI 304/AISI 316
11	LEVER	1	C.S./M.S./S.S.304/S.S.316



ASA - 150 / 300						
SIZE NB	A	B	L	BSP / BSPT NPT	F	H
15	65	12.5	135	1/2"	21.8	15
20	75	19.0	135	3/4"	27.3	15
25	85	25.0	147	1"	34.1	15
32	92	32.0	198	1.1/4"	43.0	18
40	105	38.0	198	1.1/2"	49.0	18
50	120	50.0	198	2"	61.3	18
65	135	65.0	271	2.1/2"	77.0	18
80	150	75.0	271	3"	90.0	18
100	175	100.0	317	4"	115.2	18



PRIMARY SERVICE RATINGS & TEST PRESSURE

AVM Engineers

BALL VALVE

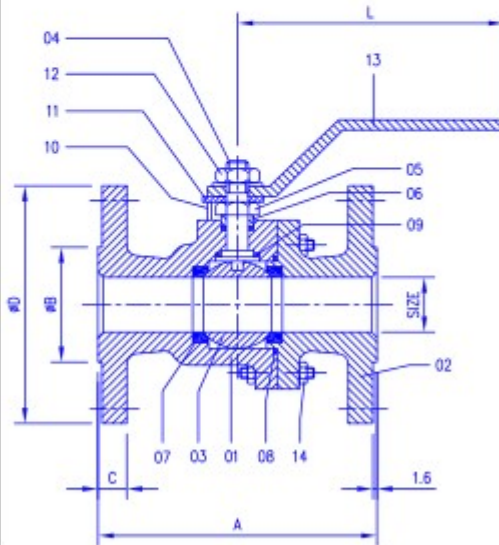
CLASS
150 / 300



TWO PIECE BALL VALVE FLANGE END

TECHNICAL DATA

DESIGN & MANUFACTURING STD.: BS 5351, API 602
 TESTING & INSPECTION STD.: API 598/BS 5146/BS 6755 PART-1
 FACE TO FACE: AS PER ANSI B 16.10
 END CONNECTIONS: B 16.5 RF/BS 1560
 DRILLING: TABLE D,E,F, ASA 150#, ASA 300#
 FOR FLANGE DIM. REFER TO PAGE NO. 32,33 & 34



P. NO.	ITEM	QTY.	MATERIAL
01	BODY	1	ASTM A 216 Gr. WCB C.I. TO IS 210 Gr. FG 220 AISI 304 OR CFB (I.C.) AISI 316 OR CF8M (I.C.)
02	SIDE PIECE	1	ASTM A 216 Gr. WCB C.I. TO IS 210 Gr. FG 220 AISI 304 OR CFB (I.C.) AISI 316 OR CF8M (I.C.)
03	BALL	1	AISI 304/AISI 316
04	STEM	1	AISI 304/AISI 316
05	GLAND NUT	1	AISI 304/AISI 316
06	GLAND BUSH	1	AISI 304/AISI 316
07	SEAT RING	2	PTFE OR FILLED PTFE
08	BODY SEAL	1	PTFE OR FILLED PTFE
09	STEM SEAL	2	PTFE OR FILLED PTFE
10	STOPPER PIN	1	C.S./S.S.304/S.S.316
11	STOP	1	C.S./S.S.304/S.S.316
12	LOCK NUT	1	C.S./S.S.304/S.S.316
13	LEVER	1	C.S./S.S.304/S.S.316
14	STUD & NUT	REQ.	C.S./S.S.304/S.S.316

ASA - 150					
SIZE NB	A	ØB	C	ØD	L
15	108	35	11	89	150
20	118	43	13	98	150
25	127	51	14	108	150
32	140	64	16	117	150
40	165	73	18	127	150
50	178	92	19	152	225
65	190	105	22	178	300
80	203	127	24	190	300
100	229	157	24	229	350
125	254	186	24	254	350
150	267	216	25	279	350
200	292	270	29	343	350

ASA - 300					
SIZE NB	A	ØB	C	ØD	L
15	140	35	14	95	150
20	152	43	16	117	150
25	165	51	18	124	150
32	178	64	19	133	150
40	191	73	21	156	225
50	216	92	22	165	300
65	241	105	25	190	350
80	282	127	29	210	350
100	305	157	32	254	350
125	381	186	35	279	400
150	403	216	37	318	400
200	419	270	41	381	450

PRIMARY SERVICE RATING & TEST PRESSURE				
CLASS	WORKING PRESS.	HYD. TEST PRESSURE		
		BODY	SEAT	TEMP.
150	150 PSIG	425 PSIG	300 PSIG	200°F
300	300 PSIG	1100 PSIG	750 PSIG	200°F
AIR TEST - SEAT 102 PSIG				

ALL DIMENSION ARE IN MM

AVM Engineers

BALL VALVE

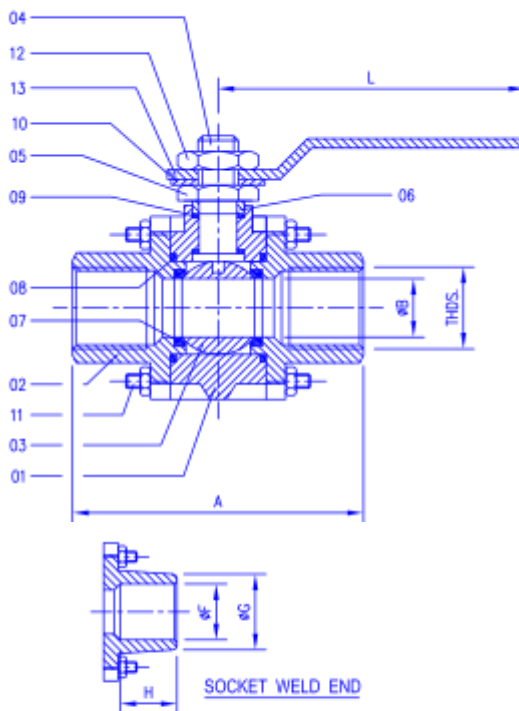
CLASS
150 / 300 / 800



THREE PIECE BALL VALVE SCREW END

TECHNICAL DATA

DESIGN & MANUFACTURING STD.: BS 5351, API 602
 TESTING & INSPECTION STD.: API 598/BS 5146/BS 6755 PART-1
 FACE TO FACE: AS PER ANSI B 16.10
 END CONNECTIONS: BSP, BSPT, NPT
 SOCKET WELD
 SOCKET WELD & THREADED TO: ANSI B 16.11/ ANSI B 2.1



P. NO.	ITEM	QTY.	MATERIAL
01	BODY	1	ASTM A 216 Gr. WCB C.I. TO IS 210 Gr. FG 220 AISI 304 OR CF8 (I.C.) AISI 316 OR CF8M (I.C.) ASTM A 105
02	BODY CONNECTOR	1	ASTM A 216 Gr. WCB C.I. TO IS 210 Gr. FG 220 AISI 304 OR CF8 (I.C.) AISI 316 OR CF8M (I.C.) ASTM A 105
03	BALL	1	AISI 304/AISI 316
04	STEM	1	AISI 304/AISI 316
05	GLAND NUT	1	AISI 304/AISI 316
06	GLAND BUSH	1	AISI 304/AISI 316
07	SEAT RING	2	PTFE OR FILLED PTFE
08	BODY SEALENT RING	2	PTFE OR FILLED PTFE
09	STEM SEAL	2	PTFE OR FILLED PTFE
10	STOPPER	1	C.S./S.S.304/S.S.316
11	STUD & NUT	4	C.S./S.S.304/S.S.316
12	LOCK NUT	1	AISI 304/AISI 316
13	LEVER	1	C.S./S.S.304/S.S.316

ASA - 800							
SIZE NB	A	Ø B	L	BSP / BSPT NPT	F	G	H
15	68	12	115	1/2"	21.8	29	12.7
20	79	16	122	3/4"	27.3	35	19.0
25	95	18	153	1"	34.1	43	22.0
32	107	24	178	1.1/4"	43.0	54	22.0
40	117	32	178	1.1/2"	49.0	58	22.0
50	130	37	178	2"	61.3	71	23.0

ASA - 150							
SIZE NB	A	Ø B	L	BSP / BSPT NPT	F	G	H
15	90	13	150	1/2"	21.8	29	12.7
20	95	19	150	3/4"	27.3	35	19.0
25	100	25	150	1"	34.1	43	22.0
32	110	32	160	1.1/4"	43.0	54	22.0
40	120	38	160	1.1/2"	49.0	58	22.0
50	130	50	160	2"	61.3	71	23.0

PRIMARY SERVICE RATING & TEST PRESSURE				
CLASS	WORKING PRESS.	HYD. TEST PRESSURE		
		BODY	SEAT	TEMP.
150	150 PSIG	425 PSIG	300 PSIG	200F
300	300 PSIG	1100 PSIG	750 PSIG	200F
800	800 PSIG	3000 PSIG	2000 PSIG	200F
AIR TEST - SEAT 102 PSIG				

ALL DIMENSION ARE IN MM

AVM Engineers

BALL VALVE

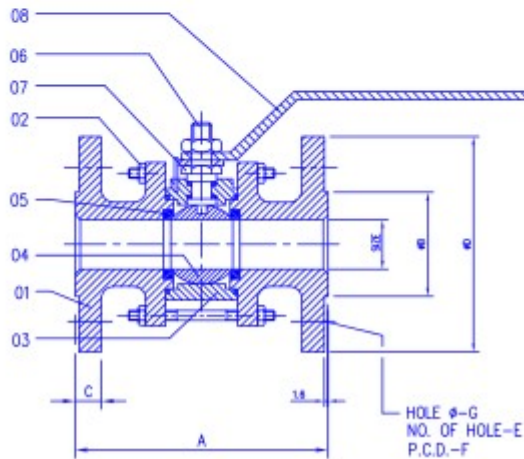
CLASS
150 / 300 / 800



THREE PIECE BALL VALVE FLANGE END

TECHNICAL DATA

DESIGN & MANUFACTURING STD.: BS 5351, API 602
 TESTING & INSPECTION STD.: API 598/BS 5146/BS 6755 PART-1
 FACE TO FACE: AS PER ANSI B 16.10
 END CONNECTIONS: FLANGED AS PER
 B 16.5 RF/BS 1560



P. NO.	ITEM	QTY.	MATERIAL
01	END PIECES	2	ASTM A 216 Gr. WCB
			C.I. TO IS 210 Gr. FG 220
			AISI 304 OR CF8
			AISI 316 OR CF8M
			ASTM A 105
	G.M.		
02	STUD & NUT	Req.	M.S. ASTM A 193 Gr. B7
			M.S. ASTM A 194 Gr. 2H
			AISI 304
			AISI 316
03	BODY	1	ASTM A 216 Gr. WCB
			C.I. TO IS 210 Gr. FG 220
			AISI 304 OR CF8
			AISI 316 OR CF8M
			ASTM A 105
	G.M.		
04	BALL	1	AISI 304/AISI 316
05	SEAT	2	PTFE OR FILLED TEFLON
06	STEM	1	AISI 304/AISI 316
07	INTERLOCK NUT	1	CARBON STEEL
			AISI 410/304/316
08	LEVER	1	CARBON STEEL
			AISI 410/304/316

ASA - 150							
SIZE NB	A	Ø B	C	Ø D	E	F	G
15	108	35	11	89	4	60	16
20	118	43	13	98	4	70	16
25	127	51	14	108	4	79	16
40	165	73	14	127	4	98	16
50	178	92	16	152	4	121	19
65	190	105	17	178	4	140	19
80	203	127	19	190	4	152	19
100	229	157	24	229	8	216	22
125	254	186	24	254	8	216	22
150	267	216	25	279	8	241	22
200	292	270	29	343	8	296	22

ASA - 300							
SIZE NB	A	Ø B	C	Ø D	E	F	G
40	191	73	21	156	4	114	22
50	216	92	22	165	8	127	22
65	241	105	25	190	8	149	22
80	282	127	29	209	8	168	22
100	305	157	32	254	8	200	22
125	381	186	35	279	8	235	22
150	403	216	37	318	12	270	22
200	419	270	41	381	12	330	25

PRIMARY SERVICE RATING & TEST PRESSURE				
CLASS	WORKING PRESS.	HYD. TEST PRESSURE		
		BODY	SEAT	TEMP.
150	150 PSIG	425 PSIG	300 PSIG	200°F
300	300 PSIG	1100 PSIG	750 PSIG	200°F
800	800 PSIG	3000 PSIG	2000 PSIG	200°F
AIR TEST - SEAT 102 PSIG				

ALL DIMENSION ARE IN MM

AVM Engineers