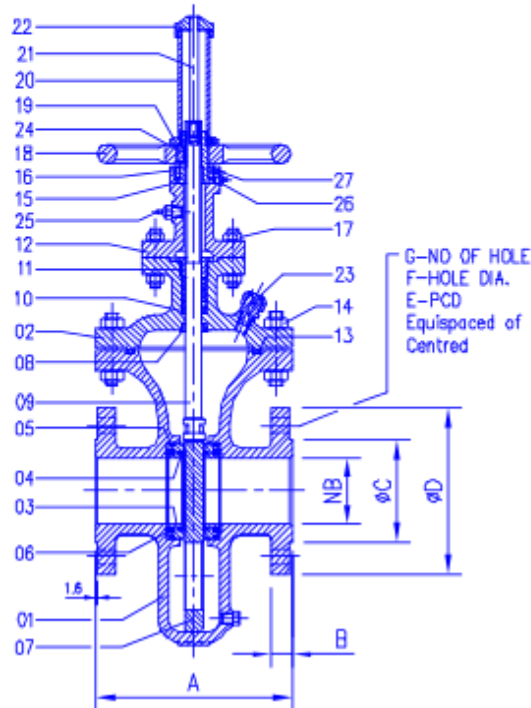


CONDUIT GATE VALVES

CLASS
150

TECHNICAL DATA

MANUFACTURING STD.: API 6D
 TESTING & INSPECTION STD.: API 6D
 FACE TO FACE : AS PER ANSI B 16.10
 END CONNECTIONS : FLANGED AS PER B 16.5



TEST PRESSURE		
HYDROSTATIC	HYDROSTATIC	AIR
BODY	SEAT	SEAT
425 PSIG	300 PSIG	80 PSIG

NO.	DESCRIPTION	MATERIAL	QTY.
01	BODY	ASTM A 216 GR. WCB	1
02	BONNET	ASTM A 216 GR. WCB	1
03	SEAT RING	ASTM A 276 TP 410	2
04	SEAT INSERT	PTFE	2
05	O RING	VITON	2
06	SEAT RING SPRING	AISI 302	--
07	GATE	ASTM A 276 TP 410	1
08	BACK SEAT BUSH	ASTM A 276 TP 410	1
09	STEM	ASTM A 276 TP 410	1
10	PACKING RING	GRAFOIL / CHEVRON	--
11	GLAND NUT	ASTM A 276 TP 410	1
12	YOKE	ASTM A 216 GR. WCB	1
13	BONNET GASKET	SPIRAL WOUND S.S. 304 WITH CAF	1
14	BONNET STUD & NUT	ASTM A 193 GR. B7 / ASTM A 194 GR. 2H	4SET
15	YOKE SLEEVE	ASTM A 439 GR. D2	1
16	YOKE BUSH	CARBON STEEL	1
17	YOKE STUD & NUT	ASTM A 193 GR. B7 / ASTM A 194 GR. 2H	4SET
18	HAND WHEEL	CARBON STEEL	1
19	HAND WHEEL NUT	CARBON STEEL	1
20	STEM ENCLOSURE BODY	CARBON STEEL	1
21	STEM ENCLOSURE SHAFT	CARBON STEEL	1
22	STEM ENCLOSURE CAP	CARBON STEEL	1
23	VENT FITTING	S.S.	1
24	KEY	STEEL	1
25	GREASE PLUG	STEEL	1
26	GREASE NIPPLE	STEEL	1
27	GRUB SCREW	STEEL	1

NB	A	B	Ø C	Ø D	E	Ø F	G
50	178	19.0	92	152.4	120.6	19	4
65	191	22.3	105	177.8	139.7	19	4
80	203	23.8	127	190.5	152.4	19	4
100	229	23.8	157	228.6	190.5	19	8
150	267	25.4	216	279.4	241.3	22	8
200	292	28.4	270	342.9	298.4	22	8
250	330	30.2	324	406.4	361.9	25	12
300	356	31.7	381	482.6	431.8	25	12
350	381	35.0	413	533.4	476.2	28	12
400	406	36.5	470	596.9	539.7	28	16
450	432	39.6	533	635.0	577.8	32	16
500	457	42.9	597	698.5	635.0	32	20
600	508	47.7	705	812.8	749.3	35	20

ALL DIMENSION ARE IN MM

AVM Engineers

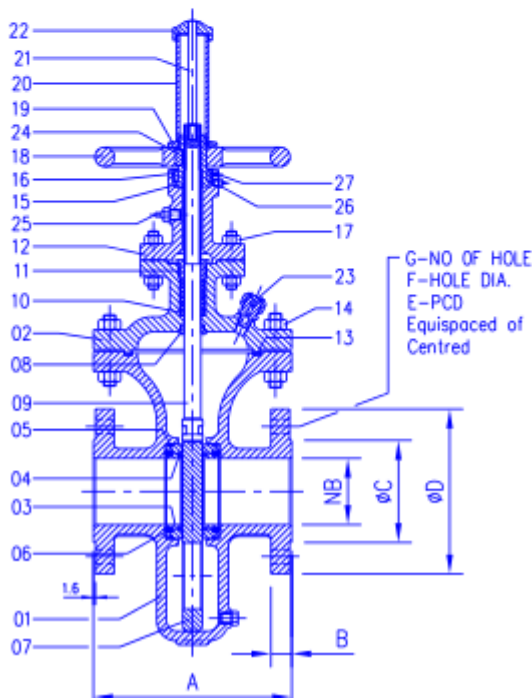
CONDUIT GATE VALVES

CLASS
300



TECHNICAL DATA

MANUFACTURING STD.: API 6D
 TESTING & INSPECTION STD.: API 6D
 FACE TO FACE: AS PER ANSI B 16.10
 END CONNECTIONS: FLANGED AS PER B 16.5



NO.	DESCRIPTION	MATERIAL	QTY.
01	BODY	ASTM A 216 GR. WCB	1
02	BONNET	ASTM A 216 GR. WCB	1
03	SEAT RING	ASTM A 276 TP 410	2
04	SEAT INSERT	PTFE	2
05	O RING	VITON	2
06	SEAT RING SPRING	AISI 302	---
07	GATE	ASTM A 276 TP 410	1
08	BACK SEAT BUSH	ASTM A 276 TP 410	1
09	STEM	ASTM A 276 TP 410	1
10	PACKING RING	GRAFOIL / CHEVRON	---
11	GLAND NUT	ASTM A 276 TP 410	1
12	YOKE	ASTM A 216 GR. WCB	1
13	BONNET GASKET	SPIRAL WOUND S.S. 304 WITH CAF	1
14	BONNET STUD & NUT	ASTM A 193 GR. B7 / ASTM A 194 GR. 2H	4 SET
15	YOKE SLEEVE	ASTM A 439 GR. D2	1
16	YOKE BUSH	CARBON STEEL	1
17	YOKE STUD & NUT	ASTM A 193 GR. B7 / ASTM A 194 GR. 2H	4 SET
18	HAND WHEEL	CARBON STEEL	1
19	HAND WHEEL NUT	CARBON STEEL	1
20	STEM ENCLOSURE BODY	CARBON STEEL	1
21	STEM ENCLOSURE SHAFT	CARBON STEEL	1
22	STEM ENCLOSURE CAP	CARBON STEEL	1
23	VENT FITTING	S.S.	1
24	KEY	STEEL	1
25	GREASE PLUG	STEEL	1
26	GREASE NIPPLE	STEEL	1
27	GRUB SCREW	STEEL	1

TEST PRESSURE		
HYDROSTATIC	HYDROSTATIC	AIR
BODY	SEAT	SEAT
1100 PSIG	800 PSIG	80 PSIG

NB	A	B	øC	øD	E	øF	G
50	216	22.3	92	165.1	127.0	19	8
65	241	25.4	105	190.5	149.3	22	8
80	283	28.4	127	290.5	168.1	22	8
100	305	31.7	157	254.0	200.1	22	8
150	403	36.5	216	317.5	269.7	22	12
200	419	41.2	270	381.0	330.2	25	12
250	457	47.7	324	444.5	387.3	28	16
300	502	50.8	381	520.7	450.8	32	16
350	762	53.8	413	584.2	514.3	32	20
400	838	57.1	470	647.7	571.5	35	20
450	914	60.4	533	711.2	704.8	35	24
500	991	63.5	597	774.7	685.8	35	24
600	1143	69.8	705	914.4	812.8	41	24

ALL DIMENSION ARE IN MM

AVM Engineers

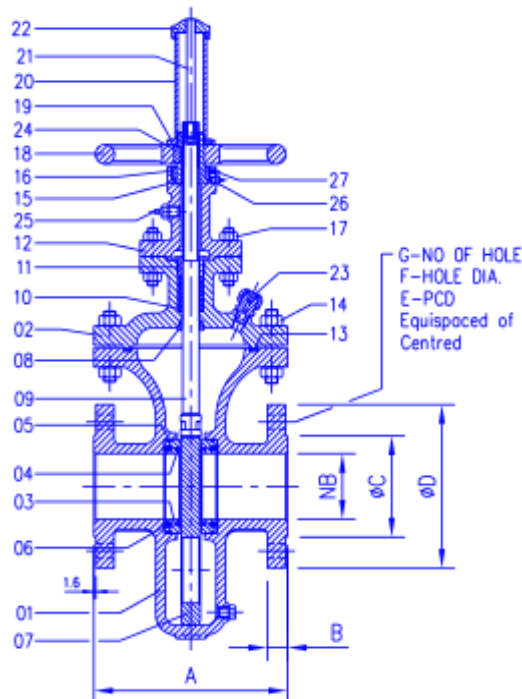
CONDUIT GATE VALVES

CLASS
400



TECHNICAL DATA

MANUFACTURING STD.: API 6D
 TESTING & INSPECTION STD.: API 6D
 FACE TO FACE: AS PER ANSI B 16.10
 END CONNECTIONS: FLANGED AS PER B 16.5



NO.	DESCRIPTION	MATERIAL	QTY.
01	BODY	ASTM A 216 GR. WCB	1
02	BONNET	ASTM A 216 GR. WCB	1
03	SEAT RING	ASTM A 276 TP 410	2
04	SEAT INSERT	PTFE	2
05	O RING	VITON	2
06	SEAT RING SPRING	AISI 302	---
07	GATE	ASTM A 276 TP 410	1
08	BACK SEAT BUSH	ASTM A 276 TP 410	1
09	STEM	ASTM A 276 TP 410	1
10	PACKING RING	GRAFOIL / CHEVRON	---
11	GLAND NUT	ASTM A 276 TP 410	1
12	YOKE	ASTM A 216 GR. WCB	1
13	BONNET GASKET	SPIRAL WOUND S.S. 304 WITH CAF	1
14	BONNET STUD & NUT	ASTM A 193 GR. B7 / ASTM A 194 GR. 2H	4 SET
15	YOKE SLEEVE	ASTM A 439 GR. D2	1
16	YOKE BUSH	CARBON STEEL	1
17	YOKE STUD & NUT	ASTM A 193 GR. B7 / ASTM A 194 GR. 2H	4 SET
18	HAND WHEEL	CARBON STEEL	1
19	HAND WHEEL NUT	CARBON STEEL	1
20	STEM ENCLOSURE BODY	CARBON STEEL	1
21	STEM ENCLOSURE SHAFT	CARBON STEEL	1
22	STEM ENCLOSURE CAP	CARBON STEEL	1
23	VENT FITTING	S.S.	1
24	KEY	STEEL	1
25	GREASE PLUG	STEEL	1
26	GREASE NIPPLE	STEEL	1
27	GRUB SCREW	STEEL	1

TEST PRESSURE		
HYDROSTATIC	HYDROSTATIC	AIR
BODY	SEAT	SEAT
1450 PSIG	1060 PSIG	80 PSIG

NB	A	B	ØC	ØD	E	ØF	G
50	292	25.4	92	165.1	127.0	19	8
65	330	28.4	105	190.5	149.3	22	8
80	356	31.7	127	209.5	168.1	22	8
100	406	35.0	157	254.0	200.1	25	8
150	495	41.1	216	317.5	269.7	25	12
200	597	47.7	270	381.0	330.2	28	12
250	673	53.8	324	444.5	387.3	32	16
300	762	57.1	381	520.7	450.8	35	16
350	826	60.4	413	584.2	514.3	35	20
400	902	63.5	470	647.7	571.5	38	20
450	978	66.5	533	711.2	704.8	38	24
500	1054	69.8	597	774.7	685.8	41	24
600	1232	76.2	705	914.4	812.8	48	24

ALL DIMENSION ARE IN MM

AVM Engineers

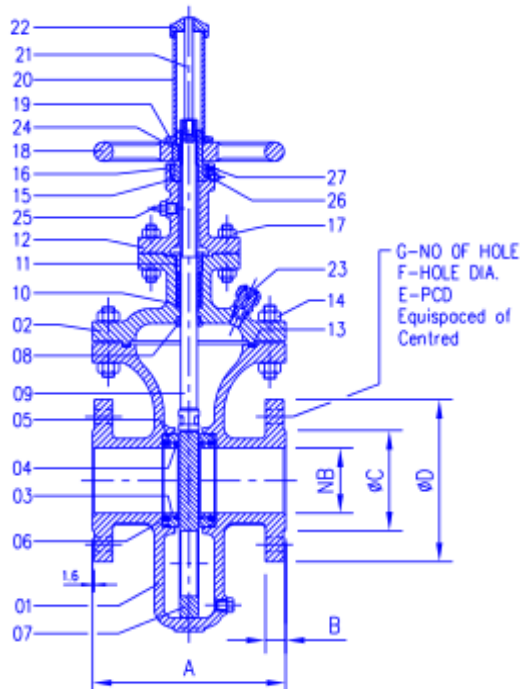
CONDUIT GATE VALVES

CLASS
600



TECHNICAL DATA

MANUFACTURING STD.: API 6D
 TESTING & INSPECTION STD.: API 6D
 FACE TO FACE: AS PER ANSI B 16.10
 END CONNECTIONS: FLANGED AS PER B 16.5



NO.	DESCRIPTION	MATERIAL	QTY.
01	BODY	ASTM A 216 GR. WCB	1
02	BONNET	ASTM A 216 GR. WCB	1
03	SEAT RING	ASTM A 276 TP 410	2
04	SEAT INSERT	PTFE	2
05	O RING	VITON	2
06	SEAT RING SPRING	AISI 302	---
07	GATE	ASTM A 276 TP 410	1
08	BACK SEAT BUSH	ASTM A 276 TP 410	1
09	STEM	ASTM A 276 TP 410	1
10	PACKING RING	GRAFOIL / CHEVRON	---
11	GLAND NUT	ASTM A 276 TP 410	1
12	YOKE	ASTM A 216 GR. WCB	1
13	BONNET GASKET	SPIRAL WOUND S.S. 304 WITH CAF	1
14	BONNET STUD & NUT	ASTM A 193 GR. B7 / ASTM A 194 GR. 2H	4 SET
15	YOKE SLEEVE	ASTM A 439 GR. D2	1
16	YOKE BUSH	CARBON STEEL	1
17	YOKE STUD & NUT	ASTM A 193 GR. B7 / ASTM A 194 GR. 2H	4 SET
18	HAND WHEEL	CARBON STEEL	1
19	HAND WHEEL NUT	CARBON STEEL	1
20	STEM ENCLOSURE BODY	CARBON STEEL	1
21	STEM ENCLOSURE SHAFT	CARBON STEEL	1
22	STEM ENCLOSURE CAP	CARBON STEEL	1
23	VENT FITTING	S.S.	1
24	KEY	STEEL	1
25	GREASE PLUG	STEEL	1
26	GREASE NIPPLE	STEEL	1
27	GRUB SCREW	STEEL	1

TEST PRESSURE		
HYDROSTATIC	HYDROSTATIC	AIR
BODY	SEAT	SEAT
2175 PSIG	1600 PSIG	80 PSIG

NB	A	B	ØC	ØD	E	ØF	G
50	292	25.4	92	165.1	127.0	19	8
65	330	28.4	105	190.5	149.3	22	8
80	356	31.7	127	209.5	168.1	22	8
100	432	38.1	157	273.0	215.9	25	8
150	559	47.7	216	355.6	292.1	28	12
200	660	55.6	270	419.1	349.2	28	12
250	787	63.5	324	508.0	431.8	35	16
300	838	66.5	381	558.8	488.9	35	20
350	889	69.8	413	603.2	527.0	38	20
400	991	76.2	470	685.8	603.2	41	20
450	1092	82.5	533	742.9	654.0	44	20
500	1194	88.9	597	812.8	723.9	44	24
600	1397	101.6	705	939.8	838.2	50	24

ALL DIMENSION ARE IN MM

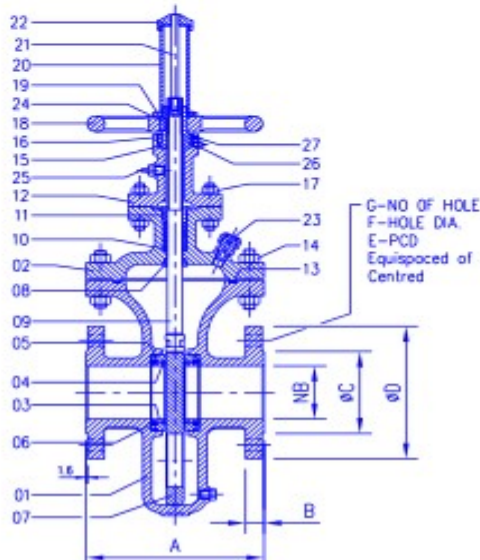
AVM Engineers

CONDUIT GATE VALVES

CLASS
900



TECHNICAL DATA
 MANUFACTURING STD.: API 6D
 TESTING & INSPECTION STD.: API 6D
 FACE TO FACE: AS PER ANSI B 16.10
 END CONNECTIONS: FLANGED AS PER B 16.5



NO.	DESCRIPTION	MATERIAL	QTY.
01	BODY	ASTM A 216 GR. WCB	1
02	BONNET	ASTM A 216 GR. WCB	1
03	SEAT RING	ASTM A 276 TP 410	2
04	SEAT INSERT	PTFE	2
05	O RING	VITON	2
06	SEAT RING SPRING	AISI 302	—
07	GATE	ASTM A 276 TP 410	1
08	BACK SEAT BUSH	ASTM A 276 TP 410	1
09	STEM	ASTM A 276 TP 410	1
10	PACKING RING	GRAFOIL / CHEVRON	—
11	GLAND NUT	ASTM A 276 TP 410	1
12	YOKE	ASTM A 216 GR. WCB	1
13	BONNET GASKET	SPIRAL WOUND S.S. 304 WITH CAF	1
14	BONNET STUD & NUT	ASTM A 193 GR. B7 / ASTM A 194 GR. 2H	4 SET
15	YOKE SLEEVE	ASTM A 439 GR. D2	1
16	YOKE BUSH	CARBON STEEL	1
17	YOKE STUD & NUT	ASTM A 193 GR. B7 / ASTM A 194 GR. 2H	4 SET
18	HAND WHEEL	CARBON STEEL	1
19	HAND WHEEL NUT	CARBON STEEL	1
20	STEM ENCLOSURE BODY	CARBON STEEL	1
21	STEM ENCLOSURE SHAFT	CARBON STEEL	1
22	STEM ENCLOSURE CAP	CARBON STEEL	1
23	VENT FITTING	S.S.	1
24	KEY	STEEL	1
25	GREASE PLUG	STEEL	1
26	GREASE NIPPLE	STEEL	1
27	GRUB SCREW	STEEL	1

TEST PRESSURE		
HYDROSTATIC	HYDROSTATIC	AIR
BODY	SEAT	SEAT
3250 PSIG	2400 PSIG	80 PSIG

NB	A	B	ØC	ØD	E	ØF	G
50	368	38.1	92	215.9	165.1	25	8
65	419	41.1	105	244.3	190.5	28	8
80	381	38.1	127	241.3	190.5	25	8
100	457	44.4	157	292.1	234.9	32	8
150	610	55.6	216	381.0	317.5	32	12
200	737	63.5	270	469.9	393.7	38	12
250	838	69.8	324	546.1	469.9	38	16
300	965	79.2	381	609.6	533.4	38	20
350	1029	85.8	413	641.3	558.8	41	20
400	1130	88.9	470	704.8	615.9	44	20
450	1219	101.6	533	787.4	685.8	50	20
500	1321	107.9	597	857.2	749.3	54	20
600	1549	139.7	705	1041.4	901.7	67	20

ALL DIMENSION ARE IN MM

AVM Engineers

CONDUIT GATE VALVES

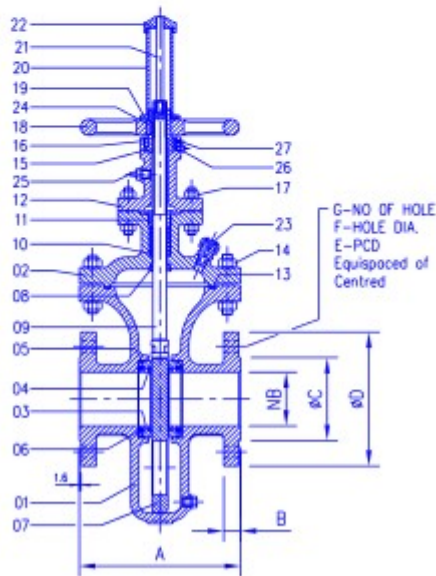
CLASS
1500



TECHNICAL DATA

MANUFACTURING STD.: API 6D
 TESTING & INSPECTION STD.: API 6D
 FACE TO FACE: AS PER ANSI B 16.10
 END CONNECTIONS: FLANGED AS PER B 16.5

NO.	DESCRIPTION	MATERIAL	QTY.
01	BODY	ASTM A 216 GR. WCB	1
02	BONNET	ASTM A 216 GR. WCB	1
03	SEAT RING	ASTM A 276 TP 410	2
04	SEAT INSERT	PTFE	2
05	O RING	VITON	2
06	SEAT RING SPRING	AISI 302	---
07	GATE	ASTM A 276 TP 410	1
08	BACK SEAT BUSH	ASTM A 276 TP 410	1
09	STEM	ASTM A 276 TP 410	1
10	PACKING RING	GRAFOIL / CHEVRON	---
11	GLAND NUT	ASTM A 276 TP 410	1
12	YOKE	ASTM A 216 GR. WCB	1
13	BONNET GASKET	SPIRAL WOUND S.S. 304 WITH CAF	1
14	BONNET STUD & NUT	ASTM A 193 GR. B7 / ASTM A 194 GR. 2H	4 SET
15	YOKE SLEEVE	ASTM A 439 GR. D2	1
16	YOKE BUSH	CARBON STEEL	1
17	YOKE STUD & NUT	ASTM A 193 GR. B7 / ASTM A 194 GR. 2H	4 SET
18	HAND WHEEL	CARBON STEEL	1
19	HAND WHEEL NUT	CARBON STEEL	1
20	STEM ENCLOSURE BODY	CARBON STEEL	1
21	STEM ENCLOSURE SHAFT	CARBON STEEL	1
22	STEM ENCLOSURE CAP	CARBON STEEL	1
23	VENT FITTING	S.S.	1
24	KEY	STEEL	1
25	GREASE PLUG	STEEL	1
26	GREASE NIPPLE	STEEL	1
27	GRUB SCREW	STEEL	1



TEST PRESSURE		
HYDROSTATIC	HYDROSTATIC	AIR
BODY	SEAT	SEAT
5400 PSIG	4000 PSIG	80 PSIG

NB	A	B	Ø C	Ø D	E	Ø F	G
50	368	38.1	92	215.9	165.1	25	8
65	419	41.1	105	244.3	190.5	28	8
80	470	47.7	127	266.7	203.2	32	8
100	546	53.8	157	311.1	241.3	35	8
150	705	82.5	216	393.7	317.5	41	12
200	832	91.9	270	482.6	393.7	38	12
250	991	107.9	324	584.2	482.6	44	12
300	1130	123.9	381	673.1	571.5	50	16
350	1257	133.3	413	749.3	635.0	54	16
400	1384	146.0	470	825.5	704.8	67	16
450	1537	101.6	533	914.4	774.7	73	16
500	1664	107.9	597	984.2	831.8	80	16
600	1943	139.7	705	1168.4	990.6	92	16

ALL DIMENSION ARE IN MM

AVM Engineers

CONDUIT GATE VALVES

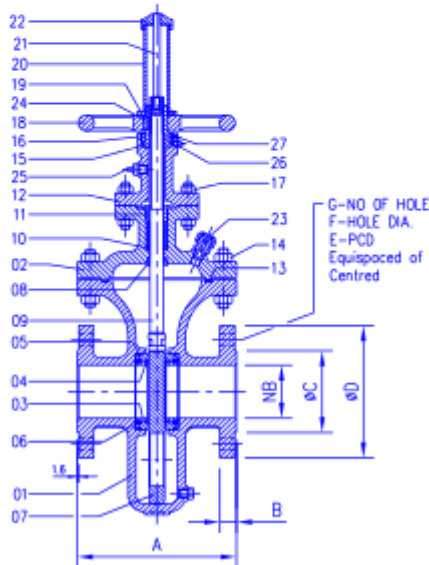
CLASS
2500



TECHNICAL DATA

MANUFACTURING STD.: API 6D
 TESTING & INSPECTION STD.: API 6D
 FACE TO FACE: AS PER ANSI B 16.10
 END CONNECTIONS: FLANGED AS PER B 16.5

NO.	DESCRIPTION	MATERIAL	QTY.
01	BODY	ASTM A 216 GR. WCB	1
02	BONNET	ASTM A 216 GR. WCB	1
03	SEAT RING	ASTM A 276 TP 410	2
04	SEAT INSERT	PTFE	2
05	O RING	VITON	2
06	SEAT RING SPRING	AINI 302	—
07	GATE	ASTM A 276 TP 410	1
08	BACK SEAT BUSH	ASTM A 276 TP 410	1
09	STEM	ASTM A 276 TP 410	1
10	PACKING RING	GRAFOIL / CHEVRON	—
11	GLAND NUT	ASTM A 276 TP 410	1
12	YOKE	ASTM A 216 GR. WCB	1
13	BONNET GASKET	SPIRAL WOUND S.S. 304 WITH CAF	1
14	BONNET STUD & NUT	ASTM A 193 GR. B7 / ASTM A 194 GR. 2H	4 SET
15	YOKE SLEEVE	ASTM A 439 GR. D2	1
16	YOKE BUSH	CARBON STEEL	1
17	YOKE STUD & NUT	ASTM A 193 GR. B7 / ASTM A 194 GR. 2H	4 SET
18	HAND WHEEL	CARBON STEEL	1
19	HAND WHEEL NUT	CARBON STEEL	1
20	STEM ENCLOSURE BODY	CARBON STEEL	1
21	STEM ENCLOSURE SHAFT	CARBON STEEL	1
22	STEM ENCLOSURE CAP	CARBON STEEL	1
23	VENT FITTING	S.S.	1
24	KEY	STEEL	1
25	GREASE PLUG	STEEL	1
26	GREASE NIPPLE	STEEL	1
27	GRUB SCREW	STEEL	1



TEST PRESSURE		
HYDROSTATIC	HYDROSTATIC	AIR
BODY	SEAT	SEAT
9000 PSIG	6600 PSIG	80 PSIG

NB	A	B	ØC	ØD	E	ØF	G
50	451	50.0	92	234.9	171.4	28	8
65	508	57.1	105	266.7	196.8	32	8
80	578	66.5	127	304.8	228.6	35	8
100	673	76.2	157	355.6	273.0	41	8
150	914	107.9	216	482.6	368.3	54	8
200	1022	127.0	270	552.4	438.1	54	12
250	1270	165.1	324	673.1	539.7	67	12
300	1422	184.1	381	762.0	619.2	73	12

ALL DIMENSION ARE IN MM

AVM Engineers