

PHOTON-HBY60



Power Consumption 60W
Maximum Lumens 8400 (+/- 10%)
Input Range 150V-275V
CCT 2700-6500 k
Outer Dia 376mm

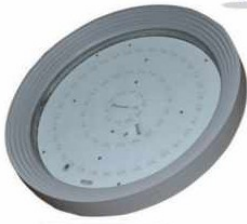


PHOTON-HBY70



Power Consumption 72W
Maximum Lumens 10080 (+/- 10%)
Input Range 150V-275V
CCT 2700-6500 k
Outer Dia 376mm

PHOTON-HBY120



Power Consumption 120W
Maximum Lumens 16800 (+/- 10%)
Input Range 150V-275V
CCT 2700-6500 k
Outer Dia 425mm



PHOTON-HBY150



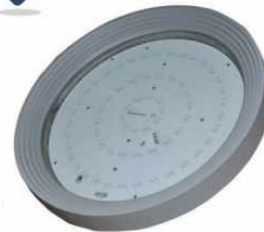
Power Consumption 150W
Maximum Lumens 21000 (+/- 10%)
Input Range 150V-275V
CCT 2700-6500 k
Outer Dia 425mm

PHOTON-HBY90E



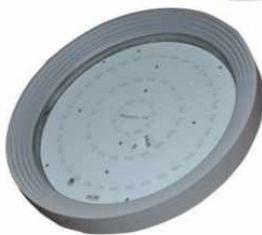
Power Consumption 92W
Maximum Lumens 11040 (+/- 10%)
Input Range 150V-275V
CCT 2700-6500 k
Outer Dia 376mm

PHOTON-HBY120E



Power Consumption 120W
Maximum Lumens 14400 (+/- 10%)
Input Range 150V-275V
CCT 2700-6500 k
Outer Dia 425mm

PHOTON-HBY150E



Power Consumption 150W (+/- 10%)
Maximum Lumens 18000
Input Range 150V-275V
CCT 2700-6500 k
Outer Dia 425mm



CE DGS&D RoHS



CSPQ

NSIC

MSME

CRSI

MNRE
Approved

IES-LM-79-08

LM-80

IS:10322

IS:16107

IS:13021

IS:16103

IEC:61000