



2-3 WAY SLIPPER VALVE

RAPID CONTROLS

APPLICATION

Used for 2 position, or floating control of liquids either for Mixing/Diverting service or in systems requiring that the flow be directed from either of two inlets to a common outlet or flow to be directed from two outlet from one inlet.

CONSTRUCTION

2 and 3 way slipper valves with metal to metal seating. Constant total flow throughout full plug travel. Linkage provides with strain relief mechanism assuring tightest possible close-off without putting excessive strain on the motor.

Specifications

BODY	: Cast Iron
SEAT	: Brass/Gun Metal
STEM	: S.S.-304/Brass/Gun Metal
PACKAGING	: Nylon disc, loaded with set of O-Rings
BODY TEST PRESSURE	: 21 Kg/cm ²
WORKING PRESSURE	: 7 Kg/cm ²
FLOW CHARACTERISTICS	: Constant total flow throughout full seat travel.
WORKING TYPE	: ON & OFF/Mixing/Diverting
END CONNECTION	: Screwed End Upto 50mm Flanged and 65mm onwards
ELECTRIC ACTUATOR MODEL SELECTION :	
- MODULATING 0-10 V DC	
- MODULATING 4-20 MA	
- ON/OFF TYPE (COM, NO, NC)	



**RAPID CONTROLS PVT.LTD.**

B-47, Mayapuri, Indl. Area, Phase-1, New Delhi-64 (India)

Phone - 28117185, 28113873, 28115349, 45128360

E-mail : rapidcontrols@gmail.com, rapidcontrols47@gmail.com

Website : www.rapidcontrols.co.in

TECHNICAL DATA SHEET
2 WAY & 3 WAY
MOTORIZED SLIPPER VALVE

S.No	DESCRIPTION	DETAILS	
VALVE DETAILS			
1	MAKE	"RC"	
2	BODY MATERIAL	CAST IRON IS:210 FG:260	
3	BONNET MATERIAL	CAST IRON IS:210 FG:260	
4	TYPE OF VALVE	2 WAY	3 WAY
5	NO. OF PORT	2 PORTS	3 PORTS
	CONNECTION SIZES	VALVE SIZE	WEIGHT OF VALVE (KG)
		15 MM	1.3
		20 MM	1.3
		25 MM	1.5
		32 MM	1.6
		40 MM	3.6
		50 MM	5.5
		65 MM	12
		80 MM	19
		100 MM	23.5
6	PLUG	BRASS IS:1264, GRADE DCB-I/GUN METAL	
7	SPINDLE	VALVE SIZE UPTO 40mm	BRASS IS:1264/319 GRADE DCB-I,GUN METAL
		FOR VALVE SIZE 50mm TO 100mm	STAINLESS STEEL 304
8	SPINDLE	BRASS IS:1264, GRADE DCB-I/GUN METAL FOR VALVE SIZE UPTO 40MM	
		STAINLESS STEEL 304 FOR VALVE SIZE 50,65,80,10 MM	
9	GLAND PACKAGING	NYLON DISC WITH NBR O-RING	
10	END CONNECTION	FEMALE SCREWED END CONNECTION FOR VALVE SIZE UPTO 50MM	
		FLANGED END CONNECTION AS BS 4504 PN6 FOR VALVE SIZE 65MM TO 10MM	





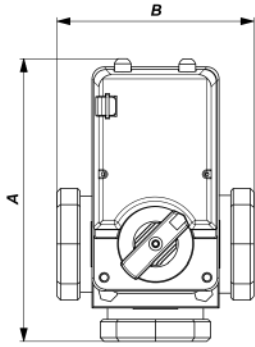
RAPID CONTROLS PVT.LTD.

B-47, Mayapuri, Indl. Area, Phase-1, New Delhi-64 (India)
Phone - 28117185, 28113873, 28115349, 45128360
E-mail : rapidcontrols@gmail.com, rapidcontrols47@gmail.com
Website : www.rapidcontrols.co.in

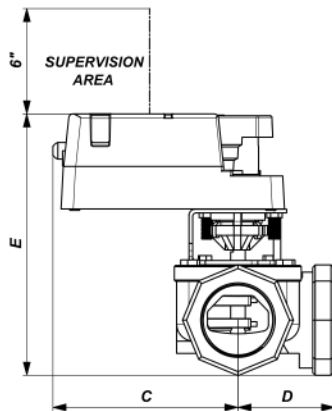
11	WORKING TEMPERATURE RANGE	0°C to 80°C
12	WORKING PRESSURE	HYDROSTATICALLY @ 7 Kg cm ²
13	BODY/SHELL TEST PRESSURE	HYDROSTATICALLY @ 21 kg cm ²
14	PAINTING	RED OXIDE COATED AND ENAMEL SPRAY PAINTED
ACTUATOR DETAILS		
15	BODY	SHEET METAL BODY (ABS COVERED)
16	TOP COVER	ABS
17	MOTOR	MICRO DC MOTOR
18	TYPE OF OPERATION	ROTARY MOTION, NON-SPRING RETURN TYPE
19	MOTOR PROTECTION	SOLID STATE INBUILT
20	OPERATING TEMPERATURE LIMIT	10°C to 75°C
21	STORAGE TEMPERATURE LIMIT	20°C to 50°C
22	NOISE RATING	UPTO 10 Db, WITHIN 1 METER DISTANCE
23	OPERATION TIME	60 SECONDS
24	MOUNTING	FIRM FIT
25	INPUT VOLTAGE	24V AC/DC, 50Hz
26	POWER CONSUMPTION	18 WATTS MAX
27	WIRING	SCREW TERMINALS
28	TRAVEL LIMIT	QUARTER TURN
29	TORQUE OUTPUT	22 Nm
30	CONTROL SIGNAL (not selectable type, conform at the time of order)	MODULATING 0-10V DC INPUT SIGNAL
		MODULATING 4-20mA INPUT SIGNAL
		ON/OFF TYPE, (COM,NO,NC/2 Position floating)
31	FAIL SAFE	STAYPUT TYPE
32	MANUAL OVERRIDE	YES, DE-CLUTCH TYPE
33	CONFIGURABLE JUMPERS	FIELD CONFIGURABLE JUMPERS FOR FORWARD/ REVERSE ACTION.
34	DEGREE OF PROTECTION	IP 54
35	ACTUATOR WEIGHT	1.3 Kg



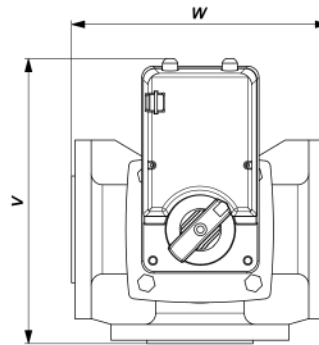
GA DRAWING FOR 3 WAY SLIPPER VALVE



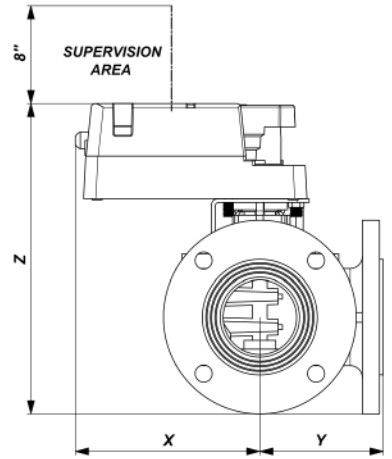
TOP VIEW



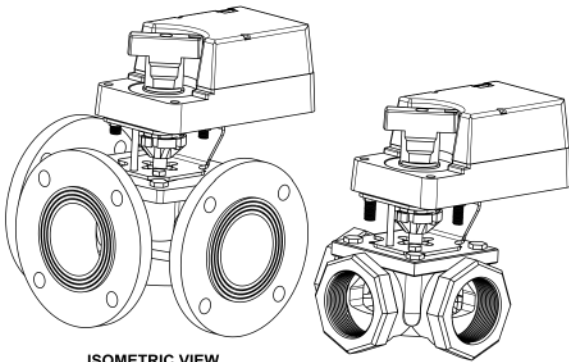
SIDE VIEW



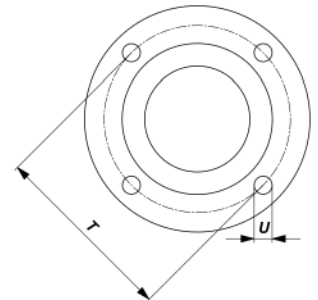
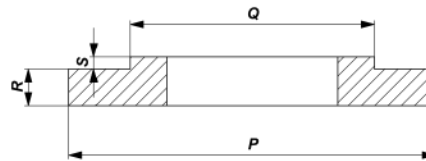
TOP VIEW (2)



SIDE VIEW (2)



ISOMETRIC VIEW



FOR SIZE 15MM TO 50MM (TOLERANCE: ± 4-6MM)

SIZE	A	B	C	D	E
15MM	195MM	79MM	157MM	44MM	188MM
20MM	195MM	79MM	157MM	44MM	188MM
25MM	195MM	79MM	157MM	44MM	188MM
32MM	200MM	92.5MM	153.5MM	44MM	194MM
40MM	215MM	126MM	164MM	62MM	212MM
50MM	230.5MM	161MM	155MM	79MM	220MM

FLANGE AND DRILLING DETAILS FOR SIZES 65MM TO 100MM (TOLERANCE: ± 1-2MM)

VALVE SIZE	P	Q	R	S	T	U	NO. OF HOLES
65MM	158MM	94.5MM	13.5MM	3MM	130.5MM	13.5MM	4
80MM	188MM	120MM	16MM	3MM	150MM	17MM	4
100MM	207.5MM	135.5MM	20MM	3MM	169.5MM	17MM	4

FOR SIZE 60MM TO 100MM (TOLERANCE: ± 4-6MM)

SIZE	V	W	X	Y	Z
65MM	246MM	207MM	155MM	100MM	258MM
80MM	275MM	243.5MM	161.5MM	123.5MM	281MM
100MM	294MM	274MM	147MM	141MM	297MM