



# 2 / 3 WAY MOTORISED DIVERTING VALVES

## APPLICATION :-

These valves are compact units consisting of small Electric Actuator and 2 / 3 Way Valve for controlling the flow of water or any liquid that is not injurious to Brass. These valves are designed for use in Fan Coil Units or any other system requiring quite and compact water lines.

These valve are made for use upto 150 P.S.I.G.

NOTE :- THIS IS A SIMPLE DIVERTING VALVE AND CAN BE USED IN ANY WHERE THERE IS A REQUIREMENT FOR DIVERTING LIQUID , THIS VALVE IS ONLY MEANT FOR USE IN LIQUID .

## VALVE / MOTOR RATING :-

VALVE :-

CONSTRUCTION MATERIEL :- BRASS

PIPE THREAD :- 5/8 " FLARE (M)

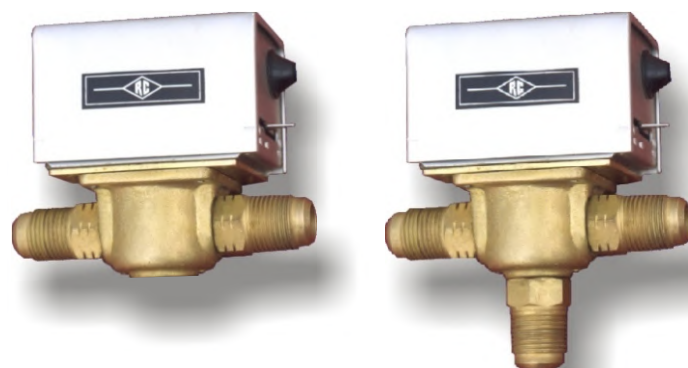
MOTOR :-

SYNCHRON (U.S.A.)

MOTOR SPEED : 6 R.P.M.

ELECT. RATING : 220V AC 60 HZ

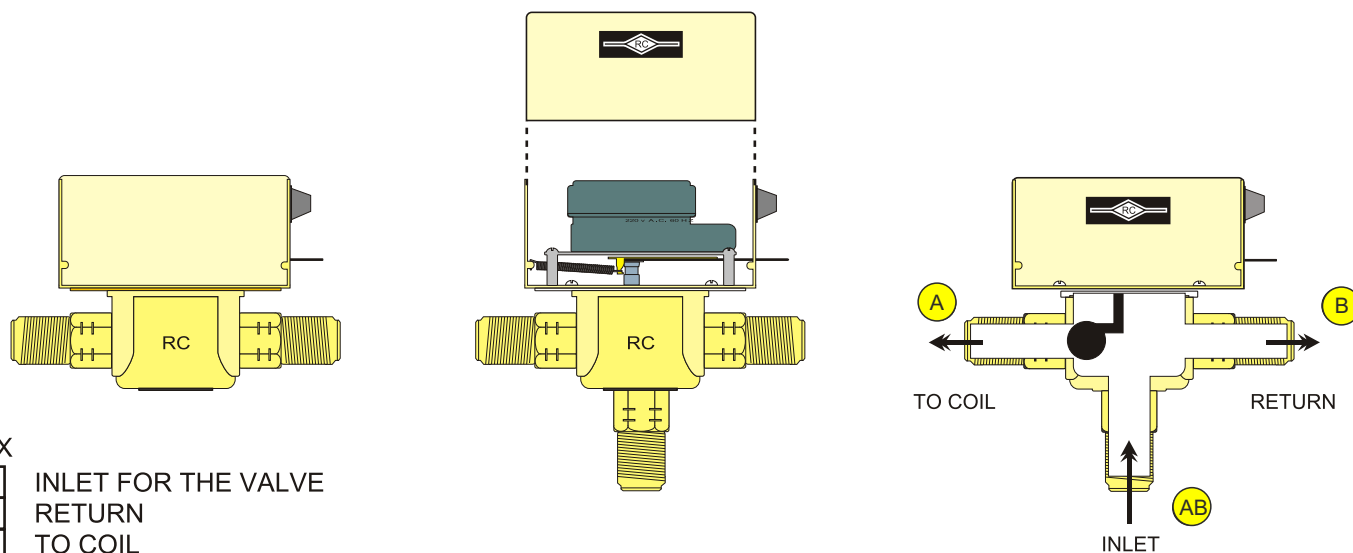
5 W



## INSTALLATION :-

The valve installation must be done by a trained experienced technician only . The rating given on the valve should be checked and confirmed suitable for line use before installation . Install the valve in on area with adequate Clearance , so that the manual opening lever on the body can be moved freely.

It can be mounted in any position on vertical pipe line . If it is mounted Horizontally . The power head must be even with or above the center line of The piping . Always ensure that enough space is provided above the power Head to r emove the cover for servicing.



INDEX

AB
B
A

INLET FOR THE VALVE  
 RETURN  
 TO COIL



**RAPID CONTROLS PVT.LTD.**

B-47, Mayapuri, Indl. Area, Phase-1, New Delhi-64 (India)

Phone - 28117185, 28113873, 28115349, 45128360

E-mail : rapidcontrols@gmail.com, rapidcontrols47@gmail.com

Website : www.rapidcontrols.co.in

**TDS FOR MOTORIZED VALVE BRASS BODY  
2 WAY/3 WAY**

S.No	DESCRIPTION	DETAILS	
1	MAKE	RC	
	NO OF PORT	2 WAY	
		3 WAY	
2	VALVE TYPE	NORMALLY CLOSE, SUPPLY TO OPEN	
3	SUITABLE MEDIA	WATER	
4	BODY	BRASS FORGED IS:1264 GRADE DCB-I	
5	CONNECTORS	BRASS HEX NUT IS:319	
6	ACTUATOR SADDLE	BRASS SHEET	
7	ACTUATOR BASE & HOUSING	ALUMINIUM	
8	MOTOR	SHYNCHRONOUS MOTOR	
9	FAIL SAFE	2 WAY	CLOSE/OFF POSTION
		3 WAY	BYPASS/OFF POSITION
10	MANUAL OVERRIDE	YES, LEVER TYPE	
11	SUPPORTING SPRING & SCREW	S.S.304	
12	OPERATING TEMPURATURE	0°C TO 90°C	
13	WORKING PRESSURE	PN16	
14	BODY TEST PRESSURE	24 Bar	

