



PNEUMATIC CONTROL VALVES

VALVES SIZES : 15mm TO 200mm .

Application : Used for normally open / closed two position control of steam , liquids , air , oil brine or other non-combustible gases , heat exchange systems and as a power failure valve where tight shut off is required .

Construction : Single seated , straight through globe body with high lift plug , spring loaded self adjusting packing . Pneumatic actuator is equipped with reinforced diaphragm . The diaphragm is enclosed in cast iron housing with spring assembly . Valves suitable for use with control air pressure of 5 PSI to 20 PSI .



VALVE BODY SPECIFICATION

SIZES	Screwed - 15mm through 50mm Flanged - 60mm through 200mm
FLOW CHARACTERISTIC	Constant Flow throughout full Plug Travel
BODY	Standard - Cast Iron
MATERIAL	Optional - Stainless Steel , Gun Metal , Cast Steel
PACKINGS	Teflon Cone , Spring Loaded self adjusting .
STEM	Stainless Steel .
PLUG	Standard - Brass . Optional - Stainless Steel , Gun Metal m Cast Steel .
SEAT	Standard - Brass . Optional - Stainless Steel , Gun Metal m Cast Steel .

Valve Size mm	CV	Recommended Max. Pressure Differential	Max. Temp. Of Fluid	Max. Pressure of Fluid	Normal Limiting Factor
15	2.5	20 PSI	240 F	150 PSI Screwed 125 PSI Flanged	Maximum Pressure Differential
15	4.0				
20	6.3				
25	10.0				
35	16.0				
40	25.0				
50	40.0				
65	63.0				
75	100.0				
100	160.0				
125	250.0				
150	360.0				
200	600.0				

**RAPID CONTROLS PVT.LTD.**

B-47, Mayapuri, Indl. Area, Phase-1, New Delhi-64 (India)

Phone - 28117185, 28113873, 28115349, 45128360

E-mail : rapidcontrols@gmail.com, rapidcontrols47@gmail.com

Website : www.rapidcontrols.co.in

TECHNICAL DATA SHEET
2 WAY & WAY PNEUMATIC OPERATED VALVE

S.No	DESCRIPTION	DETAILS		
1	MAKE	"RC"		
2	TYPE	DIAPHRAGM SEATED, PNEUMATIC OPERATED, SPRING RETURN TYPE, SUPPLY TO OPEN, NO SUPPLY TO CLOSE.		
3	VARIANT	SUITABLE FOR UPTO 100°C	SUITABLE FOR UPTO 200°C	SUITABLE FOR UPTO 300°C
4	MEDIA TEMP. RANGE	-5°C to 100°C	-5°C to 200°C	-5°C to 300°C
5	BODY MATERIAL	CAST IRON IS:210 FG:260	CARBON STEEL	CARBON STEEL
6	BONNET MATERIAL	CAST IRON IS:210 FG:260	CARBON STEEL	CARBON STEEL
7	PLUG	BRASS IS:1264, GRADE DCB-I	BRASS IS:1264, GRADE DCB-I	SS304
8	SEAT	METAL-TO-METAL SEATING OF BRASS IS:1264, GRADE DCB-I & SOFT SEATING WITH TEFLON SHEET WITH BRASS IS:1264, GRADE DCB-I	METAL-TO- METAL SEATING OF BRASS IS:1264, GRADE DCB-I	METAL-TO-METAL SEATING,SS304
9	GLAND PACKAGING	PTFE ROPE FILLED	PTFE ROPE FILLED	ASBESTOS GLAND PACKAGING
10				
11	NO. OF PORT	2 WAY	2 CONNECTION PORTS, 1 INLET and 1 OUTLET	
		3 WAY	3 CONNECTION PORTS, 2 INLET and 1 OUTLET	
12	SPINDLE	STAINLESS STEEL 304		
13	GLAND NUT	BRASS IS:319,GRADE DCB-I		





RAPID CONTROLS PVT.LTD.

B-47, Mayapuri, Indl. Area, Phase-1, New Delhi-64 (India)

Phone - 28117185, 28113873, 28115349, 45128360

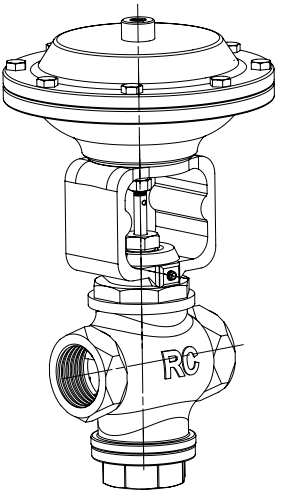
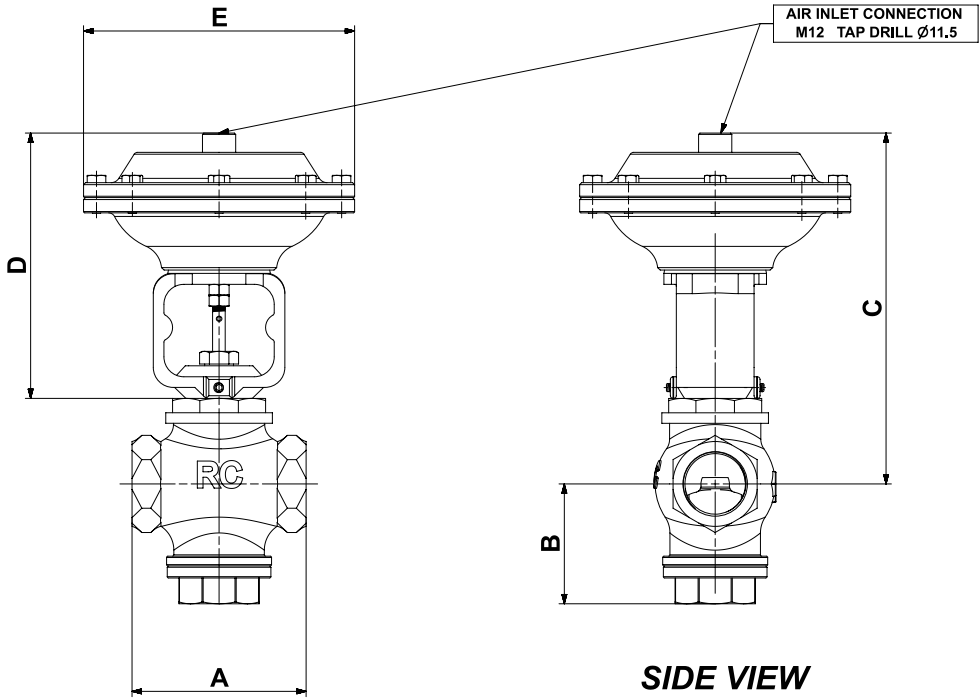
E-mail : rapidcontrols@gmail.com, rapidcontrols47@gmail.com

Website : www.rapidcontrols.co.in

14	END CONNECTION	SIZE UPTO 50mm	FEMALE SCREWED END CONNECTION
		65mm,80mm,100mm	FLANGE END AS PER IS:6418, TABLE 5
		125mm,150mm	FLANGE END AS PER BS-10 TABLE E
15	WORKING PRESSURE	7 Kg cm ²	
16	BODY TEST PRESSURE	21 kg cm ²	
17	PAINTING	RED OXIDE COATED AND ENAMEL SPRAY PAINTED	
18	WEIGHT	Connection size: - 15mm - 8 Kg	
		Connection size: - 20mm - 8 Kg	
		Connection size: - 25mm - 8.3 Kg	
		Connection size: - 32mm - 8.5 Kg	
		Connection size: - 40mm - 12.6 Kg	
		Connection size: - 50mm - 14.7 Kg	
		CONNECTION SIZE: - 65mm - 49 Kg	
		CONNECTION SIZE: - 80mm - 55 Kg	
		CONNECTION SIZE: - 100mm - 68 Kg	
		CONNECTION SIZE: - 125mm - 81 Kg	
		CONNECTION SIZE: - 150Mm - 116 Kg	
19	PNEUMATIC ARRANGEMENT	SIZE UPTO 50mm	CAST ALUMINIUM
		65MM TO 150MM	CAST IRON IS:210 FG:260
20	LINKAGE	SIZE UPTO 50mm	CAST IRON IS:210 FG:260
		65MM TO 150MM	CAST IRON IS:210 FG:260
21	DIAPHRAGM BASE	M.S. ZINC PLATED	
22	SPRING		
23	DIAPHRAGM SPINDLE		
24	AIR PRESSURE TO OPEN	5 TO 20 PSI	
25	AIR IN CONNECTION SIZE	3/8"(F) BSP	



GA DRAWING OF RC MAKE
3 WAY PNEUMATIC OPERATED VALVE



ISOMETRIC VIEW

FOR SIZE UPTO :- 50MM					
SIZE	A	B	C	D	E
15MM	115MM	77.6MM	274.7MM	216MM	204.5MM
20MM	115MM	77.6MM	274.7MM	216MM	204.5MM
25MM	115MM	77.6MM	274.7MM	216MM	204.5MM
32MM	114MM	81.5MM	266.5MM	216MM	204.5MM
40MM	131MM	89.75MM	277.75MM	216MM	204.5MM
50MM	156MM	89.1MM	302.5MM	216MM	204.5MM