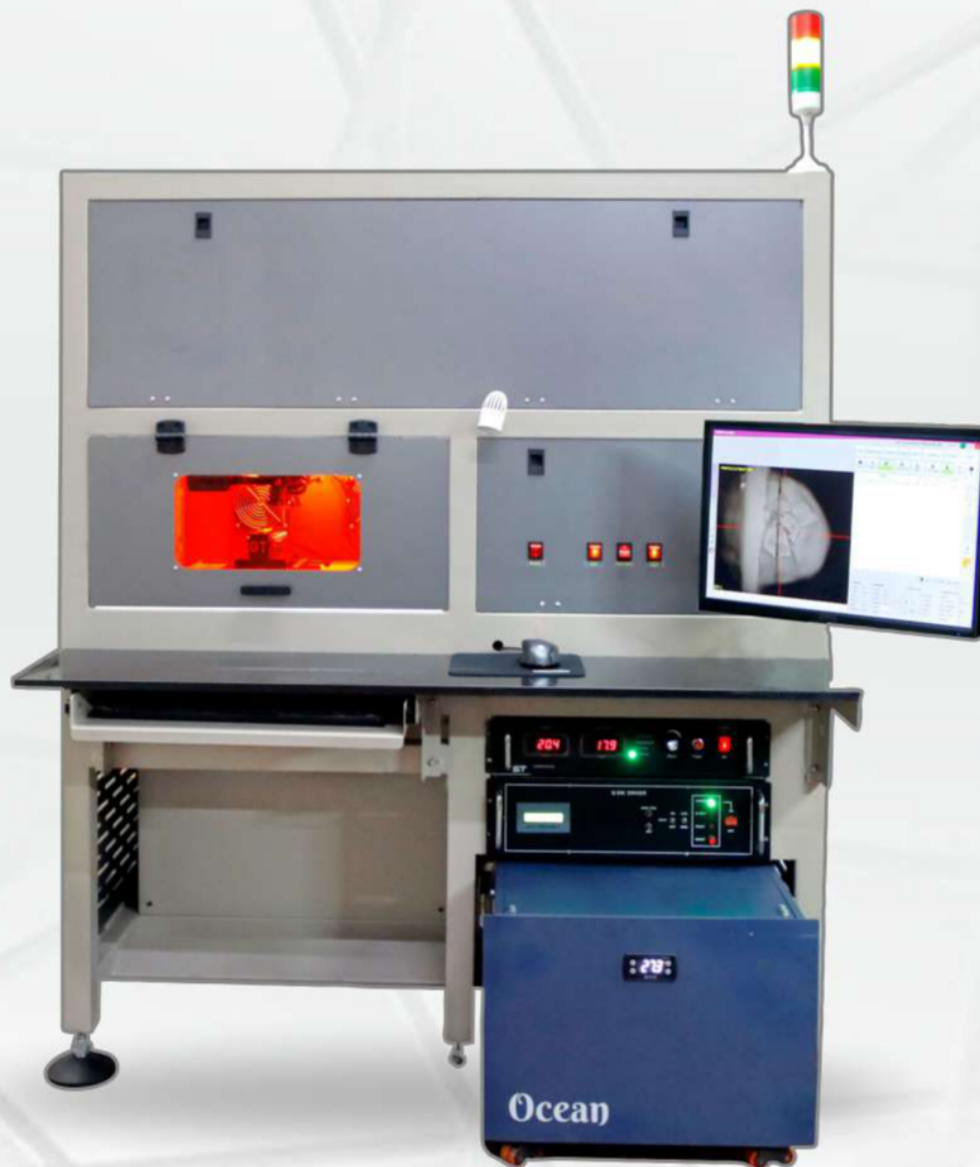




---

# DIODE LASER SYSTEM

---



# TYPES OF DIAMOND CUTTING PROCESS

Simple Sawing (L.S.)



Polki Sawing



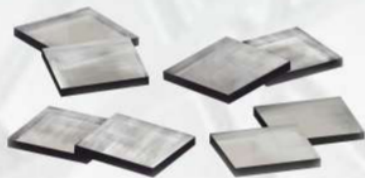
Slice Cut



Core Cutting



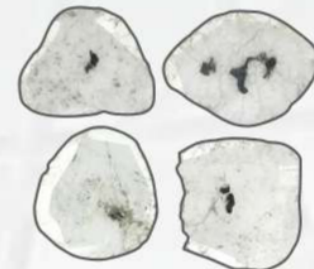
Slice Cut



DLC & Core Cutting



Polki



---

## **SPECIAL FEATURES**

---

- Low Weightloss.
- CVD Slice & CVD Coring
- Next to "Nil" Breakage Ratio.
- Smooth Cutting Surface.
- Easy and Smart Program.
- High Production.
- Auto Image Capture.
- Advance Software Feature.

---

# TECHNICAL SPECIFICATION

---

## LASER

Wavelength	:	532 nm
Output Power @ 7.5 KHz, Watts	:	16 W
Transverse Mode	:	TEM <sub>00</sub>
Beam Diameter, mm	:	1.0
Beam Quality (M <sup>2</sup> )	:	<1.2
Pulse repetition frequency (PRF), KHz	:	1-20
Pulse width @ 7-10 KHz, ns	:	90
Pulse Stability @ 10 KHz (RMS)	:	3
Polarization	:	Linear (Vertical)
Output Stability (% Over 8 hrs)	:	1
Working Temp °C	:	25

## CNC SYSTEM

Axis Travel	:	135 mm* 135 mm*75 mm
Resolution	:	1 Micron or better
Accuracy	:	2 Micron / 25 mm
Repeatability	:	2 Micron / 25 mm bi Directional
Drive	:	Servo Drive with Encoder.

## MECHANICAL

Dimension : 1315 mm\*665 mm\*1480 mm

## ELECTRICAL REQUIREMENT

AC 208-230 V, 60 Hz, 5 Amps.

## CHILLER

No Requirement of External Chiller.



**Hitesh Panchal**



+91 98252 43056



shinetechnologies\_surat@yahoo.co.in



www. Shinetechnologies.co.in



U1, Diamond World, Mini Bazar,  
Nr. Princess Plaza, Varachha, Surat,  
Gujarat, INDIA, Pincode - 395006