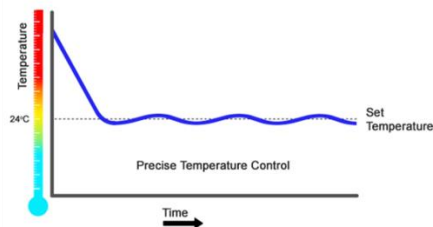




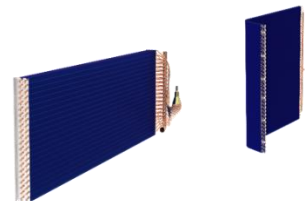
Next Generation
INVERTER
DUCTED SYSTEM



- ❖ Advanced Inverter Compressor
- ❖ Uniform and Precise Cooling
- ❖ High Efficient Design – Outstanding Performance
- ❖ Designed for high ambient operation
- ❖ Outdoor and Indoor units with special aluminium blue fins
- ❖ Enhanced Aesthetics with Long Refrigerant Piping upto 60 m
- ❖ Touch Screen Control
- ❖ Group Control Option
- ❖ BMS Integration



Precise Control with inverter compressor



Blue Fin Coating



Long Refrigerant Piping



Advanced Controllers

Next Gen Inverter Ducted Units - Technical Data			
DESCRIPTION	UNITS	DSAI-661R3B	DSAI-1021R3B
Nominal Cooling Capacity	HP	7	11
	Btu/hr	66000	102000
	TR	5.5	8.5
Evaporator Air Quantity	CMH	3740	5780
	CFM	2200	3400
Electrical AC Power supply	V/Ph/Hz	400 V, 3 ph, 50Hz	
External Finish		Pure Polyester Powder Coated	
Capacity Control		Stepless	
Refrigerant		R410A	
INDOOR UNIT			
Dimensions W X D X H		1140 X 630 X 485	1485 X 630 X 485
Net Weight	kg.	55	75
AC Power Supply		230 V, Single Phase, 50 Hz	
Type of Blower		Centrifugal Forward Curved DIDW	
Air Filter		Non-woven polyester media enclosed by HDPE mesh	
Controller Type		Intelligent Controller with Touch Screen Display Hand set	
OUTDOOR UNIT			
Quantity	No.	1	1
Dimensions - W X H X D		1020 X 1040 X 416	1320 X 1040 X 416
Net Weight	kg.	100	136
Compressor Type		Hermetically sealed Rotary DC Inverter Compressor	
Power Supply to condenser Motor		230V, 1 ph, 50Hz, AC Supply	415 V, 3 ph, 50Hz, AC Supply
Condenser Fan Type		Propeller	
Specifications are subject to change without any notice.			