

THERMAL TRANSFER OVERPRINTING

Printing at up to 600 millimeters per second at 300 dpi, the SmartDate X30 is a robust one-box solution that can easily be installed on your line or integrated by OEMs. It is the ideal coder for low- to medium- speed production lines printing on flexible film.

Operational efficiency

- Airless to increase uptime and reduce expenses**
 No need to install plant air. In addition to reducing costs, print quality will remain constant through the years.
- Advanced Consumables Management (ACM) system**
 Ribbons and printhead are automatically recognized and adjusted to code minutes after you start it. No human intervention required, no mistakes.
- Dead-dot detection system to eliminate faulty codes**
 Constant quality codes thanks to unique printhead monitoring.

Enhanced customer experience

- Compact one-box solution**
 Extremely compact in size (20 cm x 17 cm x 18 cm), it can easily be integrated into your production line and integrated by OEMs.
- Intuitive remote user interface (RUI)**
 An optional 10.1" touchscreen remote user interface can be connected and positioned anywhere on the packaging machine.
- Easy to use**
 From message selection to print adjust everything is only one click away. Track your five most important production metrics directly from your RUI home screen.
- Profile configurator for error-free operation**
 Configurable RUI home screen and password-protected user profiles manage access and limit human-related errors.

Cost-effective reliability

- Unmatched reliability**
 Simple, robust design—proven in packaging facilities worldwide—delivers consistent results you can rely on.
- Up to 15%* more codes per roll**
 Large choice of ribbon rolls based on your packaging type and needs.
- Markem-Imaje quality service you can trust**
 Gain direct access to one single point of contact for expert support on both your coder and ribbon.



Minimize downtime with the TTO market's first Advanced Consumables Management system.



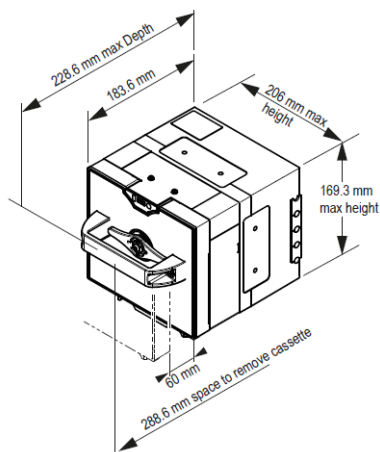
USB 2.0 connectivity: For easy connection of keyboards, bar code scanners and USB memory sticks.



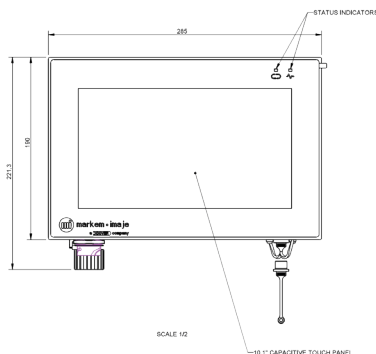
*Compared to other competitive models.

SmartDate[®] X30 - Specifications

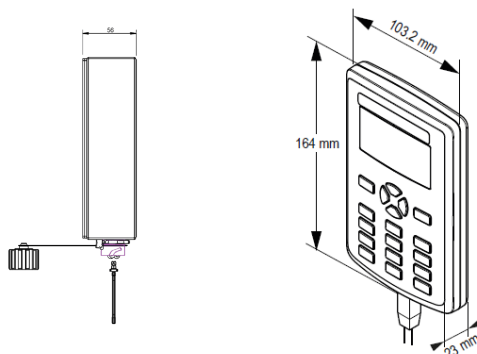
SmartDate X30



Remote user interface



Handheld user interface



Model Name	SmartDate X30
Operations	<ul style="list-style-type: none"> • Optional color remote user interface • Optional handheld terminal interface with LCD screen for message selection, variable data entry, diagnostics and system setup • Hot swappable/removable user interface • Enhanced diagnostics • Print adjust, on-board configurable password protection • Robust LED status indicators on the printer • Hardware interface <ul style="list-style-type: none"> - Inputs: "Print go" and 1 configurable input - Outputs: Fault, warning - USB for uploading and downloading images, settings and data files, message storage location - RS232, Ethernet communications standard - Communications protocols for PCs, PLCs and packaging machines; web Browser on the host PC; Virtual Network Computing • Parent/Child function to allow parent control for up to 7 children
Print features	<ul style="list-style-type: none"> • Print speed: Intermittent: 100 to 600 mm/s; continuous: 50 to 600 mm/s • Print area: Intermittent: 32 mm x 40 mm; continuous: 32 mm x 50 mm • Print features <ul style="list-style-type: none"> - Automatic printhead setup - Dead-dot detection - Average gap between prints: 0.5 mm - Automatic shift codes and serial numbers - Multiple variable user input fields with alpha numeric texts • Ribbon saving mode: Radial ribbon saving and Interlaced mode • Print specifications: TrueType font support, including non-Roman characters and symbols; printing of real-time clock, dates and auto updating best before dates, barcodes, including Han Xin, QR, GS1 DataMatrix, RSS
Other characteristics	<ul style="list-style-type: none"> • Supplies <ul style="list-style-type: none"> - Variety of thermal transfer ribbons: SmartDate Xceed, SmartDate Xtra and SmartDate Xpert - Ribbon widths: 22 mm and 33 mm - Maximum ribbon length: up to 700 m • Printer weight <ul style="list-style-type: none"> - Intermittent: 5.5 kg - Continuous: 5.0 kg • Electrical power supply: ~ 110 – 230 Vac (+/- 10%) 50 – 60 Hz • SmartDate X30 without power supply requires 24 VDC • No air supply required • Operating temperature range: 0 to 40°C • Humidity: 10% to 90% non-condensing
Accessories	<ul style="list-style-type: none"> • Mounting bracket, encoders and barcode scanner
PC software	<ul style="list-style-type: none"> • Compatible with the Systech Packaging Intelligence Suite™: CoLOS Free (included), CoLOS Base (optional), CoLOS Line (optional) and CoLOS Factory (optional). Visit www.systechone.com for more information

We reserve the right to amend the design and/or specifications of our products without notice.
© 2021 Markem-Imaje. All rights reserved.

Markem-Imaje
Global Sales & Marketing Division
9, rue Gaspard Monge
B.P. 110
26501 Bourg-lès-Valence Cedex France
Tél. : +33 (0) 4 75 75 55 00
Fax : +33 (0) 4 75 82 98 10



To learn more, visit www.markem-imaje.com