

THERMAL TRANSFER OVERPRINTING

Designed for the most demanding application, the SmartDate X45 and X65 OEM Connect delivers a seamless, cost-effective, trouble-free solution for OEM integration. Compact enough to be connected in any mounting configuration while offering the full capabilities of the SmartDate X45 and SmartDate X65 for message selection, production monitoring and help tutorials. With the SmartDate OEM Connect, integration has never been easier.

Seamless integration

- Small footprint**
 Compact, the SmartDate OEM Connect has been designed to be easily installed in small footprints and reduced cabinet space.
- Plug and Play set-up**
 Set up with Windows or Internet explorer for easy communication with the host Human Machine Interface (HMI).
- Intuitive User Interface**
 Utilizing the full functionality of the SmartDate X45 and SmartDate X65 connectivity with WEB User Interface or Virtual Network Computing* via Host HMI. An optional touch screen remote user interface can be connected and positioned anywhere on the packaging machine.



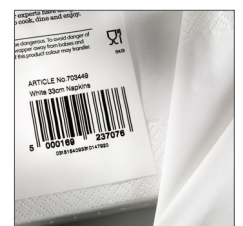
Operation Optimization

- Line configuration**
 SmartDate X45 and SmartDate X65 printers adaptable for intermittent or continuous line configuration.
- Printing flexibility**
 Can be easily changed from left to right hand with no additional parts.
- Printing capabilities**
 Printing area maximized with a range of printheads 32mm, 53mm and 128mm.
- High quality codes faster**
 Print speed can be set from 10 mm to 1,800 mm* per second allowing for 455 printed packs per minute at 300 dpi.



Enhanced user experience

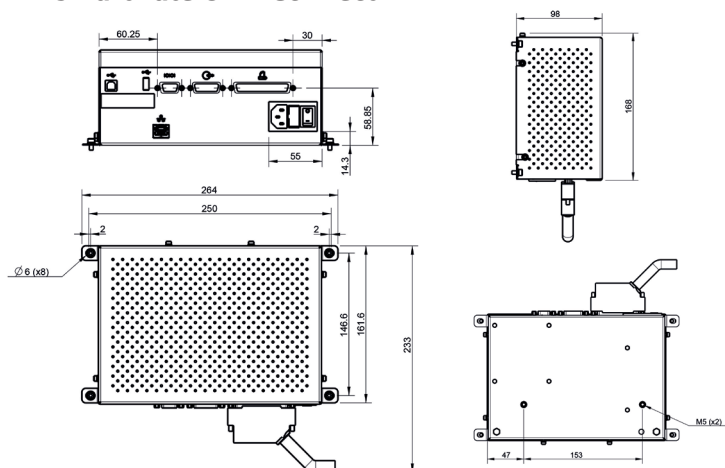
- Tutorials to facilitate daily activities**
 A range of animated help and “how to” tutorials** providing guidance on setup and daily maintenance procedures to ensure high print quality directly from the packaging machine HMI.
- Consistent quality print**
 Eliminate defective codes with seamless connectivity to Detect-Plus, CoLOS® Mark & Read and other CoLOS solutions.
- Markem-Imaje reliability and service support**
 24/7 help desk support and extensive network of on-site technical support. Advanced Service Exchange*** for a quick response and delivery of spare parts available in most geographic locations.



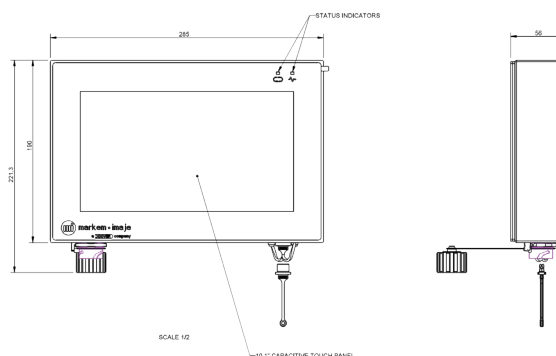
* SmartDate X65 Shuttled ** Does not support video playback
 *** See conditions defined by Markem-Imaje

SmartDate® OEM Connect - Specifications

SmartDate OEM Connect



Remoter User Interface



Model Name	SmartDate® X45 / X65 OEM Connect
Operations	<ul style="list-style-type: none"> • WEB User Interface or Virtual Network Computing, enables full functionality of the SmartDate printer directly from the HMI (Human Machine Interface) of the packaging machine. • Three communication protocols: via the Web Browser on the host PC, via enhanced DCP Communications and via NGPCL Protocol. • SmartDate X45 and X65 user familiarity: animated help tutorials, print /image adjust, on-board configurable password protection. • WYSIWYG print preview of printed message, real-time display of remaining print capacity expressed in hours and number of prints. • Parent/child function to allow control up to 7 printers. • Full diagnostics (pack rate, speed). • Hardware interface: Inputs: "Print go" and 1 configurable input. Outputs: fault, warning, and 2 configurable outputs. • Message storage: can be stored directly on the controller, on the USB, on the host PC mode or on the local network. • S/W interface: USB for downloading images, settings and data files. RS232, ethernet communications standard.
Print features	<ul style="list-style-type: none"> • Print speed: Intermittent: up to 700 mm/s, Continuous: 10 to 1800 mm/s. • Print area: Intermittent: 32mm, 53mm or 128 mm x 75mm, Continuous: 32 mm, 53 mm or 128 mm x 250 mm. • Print features: automatic printhead setup, detect: dead-dot detection, Quick Change Printhead, combined intermittent and continuous printer, easily change from left to right hand with no additional parts, gap between prints - 0.5 mm, automatic shift codes and serial numbers, multiple variable user input fields with alpha-numeric texts, high pack rate mode. • Ribbon saving mode: Radial ribbon saving, Interlaced mode, Multi-print triggers and Negative ribbon advance. • Print specifications: Full true type font support, including non-roman characters and symbols. Printing of real-time clock, dates and auto updating best before dates, barcodes; ITF, Code 39, Code 128, EAN 128, EAN 8, EAN 13, UPC A, UPC E, RSS linear, PDF 417, GS1 DataMatrix, QR and Composite RSS barcodes support.
Other characteristics	<ul style="list-style-type: none"> • Supplies: Thermal transfer ribbon available in a variety of grades and colors. • Maximum ribbon length: up to 1100 m. • Minimum ribbon width: 20 mm. • Maximum ribbon width: 130 mm. • Weight: <ul style="list-style-type: none"> - Printer: 7.8 kg. - SmartDate X45 and X65 OEM Connect: 3Kg. - Remote User Interface: 2.63Kg. • Electrical power supply: <ul style="list-style-type: none"> - SmartDate X45 OEM Connect - 100-230V AC (+/-10%), 50/60Hz. - SmartDate X65 OEM Connect - 115-230V AC (+/- 10%) 50/60Hz. • Air supply: 6 bar/90 psi (maximum) dry, uncontaminated. • Air consumption: from 0.4 ml/print at 2.5 bar. • Operating temperature range: 0 to 40°C. • Humidity: 10% to 90% non-condensing. • Remote User Interface IP Rating: IP66
Options	<ul style="list-style-type: none"> • Detect-Plus: Code Detection. • Promotional Coding.
Accessories	<ul style="list-style-type: none"> • Mounting bracket, encoders, and bar code scanner.
PC software	<ul style="list-style-type: none"> • Included CoLOS® Free for design of simple messages.

We reserve the right to amend the design and/or specifications of our products without notice.
© 2022 Markem-Imaje. All rights reserved.

Markem-Imaje
Global Sales & Marketing Division
9, rue Gaspard Monge
B.P. 110
26501 Bourg-lès-Valence Cedex France
Tél. : +33 (0) 4 75 75 55 00
Fax : +33 (0) 4 75 82 98 10



To learn more, visit www.markem-imaje.com