

COMPRESSED AIR ANALYZER S 551



AUTO DETECT
SDI or Modbus-based SUTO sensors



The ideal data logger for energy analysis (ISO 50001) and air audits (ISO 11011)



Integrated web server for remote monitoring

S 551 FEATURES



AUTO DETECT
SDI or Modbus-based SUTO sensors



TOUCH SCREEN
5" large color LCD



VERSATILE CONNECTION
Up to 24 sensors inputs



TIGHT PROTECTION
IP 65



WEB SERVER
Access from world wide



BACK-UP POWER
Battery as back-up power



Easy to use

- Just connect the sensor and start the recording, no configuration and programming required
- Easy operation through color-touch display
- Integrated web server for remote monitoring

Flexible

- Connectable sensors for all required measurement tasks (air flow, air consumption, power consumption, pressure, temperature and many more)
- Up to 24 inputs through extension boxes and Modbus
- Several loggers can be combined: no need to have long cables from the sensor to the logger
- Third party sensors can be easily connected

Efficient

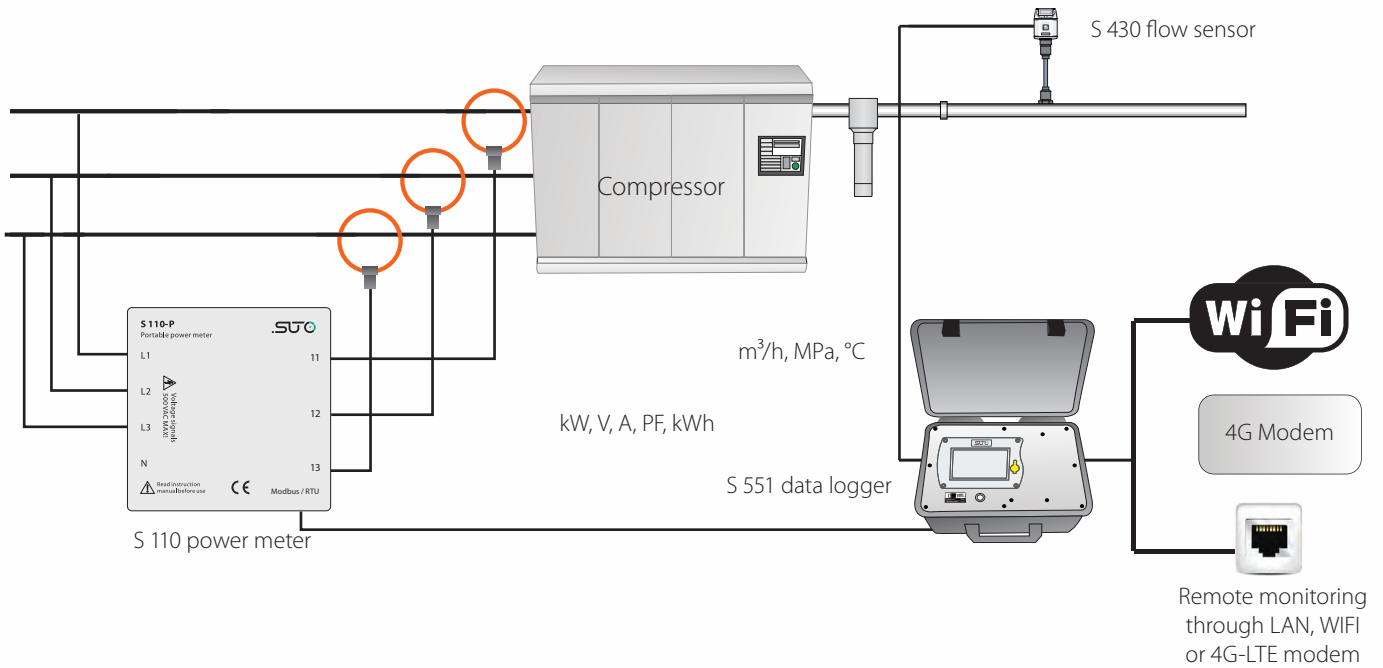
- S 551 logs data on site
- Data is analyzed in the office
- Cost effective solution
- Full software package includes:
 - S4A for basic analyzes
 - CAA for compressed air audit analyzes

Safe

- Power glitches and cuts won't affect performance: battery backup power

S 551 APPLICATION

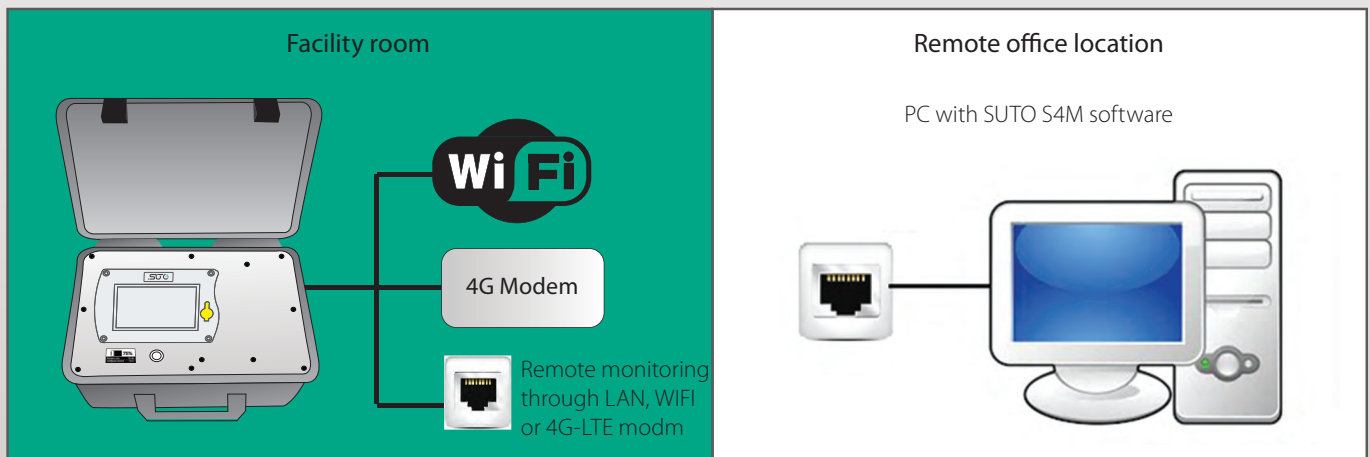
Measurement setup for data logging on the supply



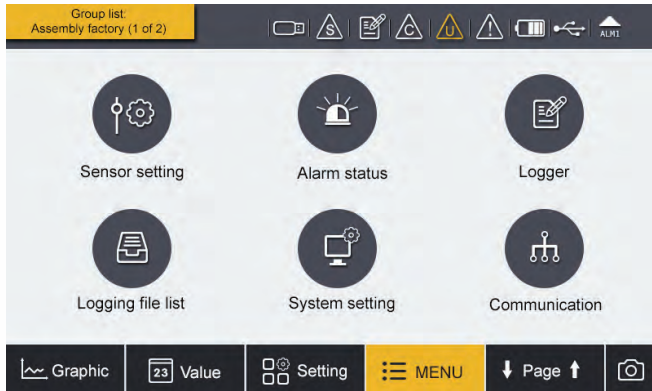
S 551 CONNECTIONS

			<p>Portable Modbus splitter box</p>
			<p>4G Modem and/or WiFi Modem</p>
			<p>Battery gauge indicating remaining battery power and life time</p> <p>75%</p> <p>Remain to use: 30 min</p> <p>Loading to connect: 3.5 w</p>

The S 551 is capable of sending measurement data and status information to a remote server through the internet. This allows users to monitor the system remotely. The illustration below shows the principle setup.

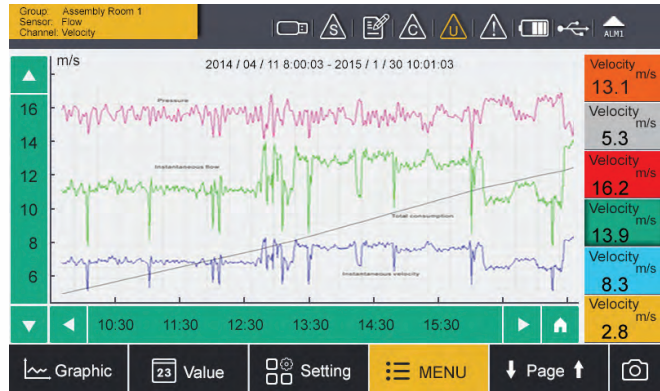


S 551 TOUCH SCREEN OPERATION



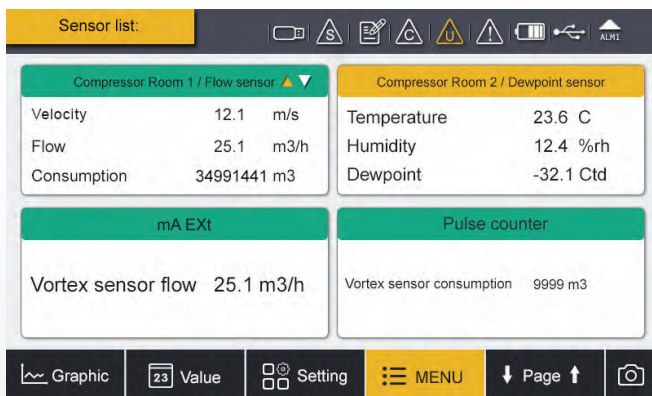
The S 551 comes with a high resolution 5" colour touch screen interface making the operation as simple as possible.

SUTO intelligent sensors are detected automatically on power-up. With a few settings the data logger is ready for operations with virtually unlimited memory size.



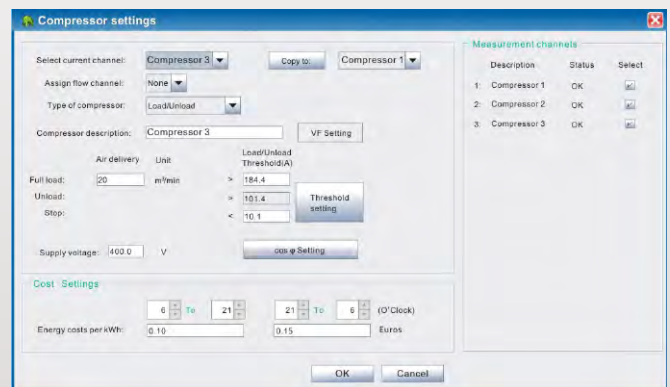
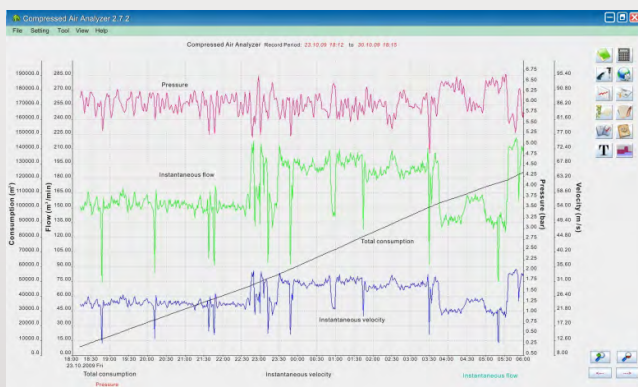
Select which channels you want to view or analyze and the built in graphic analyzer will help you identify problems immediately.

For detailed analysis we recommend using SUTO software S4A, CAA or S4M.



Up to 4 sensors can be viewed on one page and through pagem scrolling further sensors can be displayed.

S 551 DATA ANALYSIS WITH THE COMPRESSED AIR ANALYZER










Through SUTO software S4A recordings are downloaded to the PC via USB or Ethernet port. The basic analysis can be done in S4A.

For more sophisticated compressor analysis the SUTO CAA software offers many advanced features such as: performance statistics of compressors (efficiency, air delivery, load/unload cycles), leakage analysis, report generation and more. Comparisons with base line measurements from last year or last month help to identify system changes.

S 551 ORDERING

Please use the following table to assist in placing your order with our sales staff.

	Data logger	
	P560 5100	S 551-P4, portable data recorder, 4 digital input channels, power cord, USB cable, S4A software, CAA software
	P560 5101	S 551-P6, portable data recorder, 4 digital input channels and 2 analog, power cord, USB cable, S4A software, CAA software
	Flow sensors	
	S601 0401	S 401-M, insertion type flow sensor, DN15 ... DN300, Modbus RTU, 5 m cable with connector
	S601 0430	S 430 pitot tube flow sensor, DN25 ... DN250, 220 mm shaft, SDI, Modbus RTU, 5 m cable with connector
	Dew point sensor	
	S601 0215	S 215 dew point sensor, -20°Ctd ... +50°Ctd, measuring chamber, 5 m cable with connector
	S601 0212	S 212 dew point sensor, -50°Ctd ... +20°Ctd, measuring chamber, 5 m cable with connector
	S601 0220	S 220 dew point sensor, -100°Ctd ... 0°Ctd, measuring chamber, 5 m cable with connector
	Pressure sensors	
	S694 1886	Pressure sensor, 0 ... 1.6 MPa(g), 5 m cable with connector for S 551
	S694 0356	Pressure sensor, 0 ... 4.0 MPa(g), 5 m cable with connector for S 551
	Amp sensor	
	S554 0156	SUTO current clamp sensor, 1000A, 100 mm diameter, including connector to S 551
	S554 0157	SUTO current clamp sensor, 3000A, 150 mm diameter, including connector to S 551
	Temperature sensor	
	S693 0005	Temperature transmitter, -50°C ... +200°C, 4 ... 20 mA loop powered, 6 x 150 mm sensor tube, 5 m cable with connector
	A554 6003	Compression fitting, 6 mm, G 1/2" thread, 0.6 MPa
	A554 6004	Compression fitting, 6 mm, G 1/2" thread, 1.6 MPa
	Power meter (for 3 phase and single phase measurement)	
	P554 0134	Portable power meter S 110-P, Modbus RTU, including 4 test leads, 4 test clips, 5 m cable with connector to S 551
	S554 0160	Rogowski coil for S 110-P, 1000 A, 100 mm diameter, 1.8 m cable, connector to S 110-P
	S554 0161	Rogowski coil for S 110-P, 3000 A, 150 mm diameter, 1.8 m cable, connector to S 110-P
	S554 0162	Rogowski coil for S 110-P, 100 A, 160 mm diameter, 1.8 m cable, connector to S 110-P

Note: For 3 phases power supply 3 Rogowski coils are needed.

S 551 ORDERING

Please use the following table to assist in placing your order with our sales staff.



Visit our website or e-mail us:
www.suto-itec.com
sales@suto-itec.com

	Liquid flow meter (clamp on ultra sound)	
	P554 0070	Ultrasonic controller for liquid flow sensor, connectable to S 551, including 5 m connection cable to S 551 and to the sensors
	S694 4603	Ultra sound sensor pair, DN32 ... DN100, socket terminals
	S694 4604	Ultra sound sensor pair, DN100 ... DN700, socket terminals
	S694 4605	Ultra sound sensor pair, DN300 ... DN6000, socket terminals
	Other sensors / extensions	
	P554 0080	8 channel analog input extension, connectable to S 551, including 5 m cable with connector
	A554 3314	Portable Modbus splitter box, with M12 connector
	Accessories	
	A553 0103	Extension cable, 5 m, male-female connectors
	A553 0110	Open wires cable, 5 m cable with connector
	A553 0111	Sensor cable, M12, 5 m with connector to S 551
	A554 0035	Transport case S 551 for sensors and cables, L560 x W450 x H160 mm (internal compartment can be arranged according to your individual sensor requirements)
	A554 0036	Transport case, customized for 1 x S 110-P, 3 Rogowski coils, 4 x test leads, 4 x test clips, 1 x S 430

* Please contact us for further accessories and details.