

Instruction and operation manual

S 120

Oil vapor sensor



Dear Customer,

Thank you for choosing our product.

Before you start up the device, please read this manual in full and carefully observe instructions stated. The manufacturer cannot be held liable for any damage that occurs as a result of non-observance or non-compliance with this manual.

Should the device be tampered with in any manner other than a procedure that is described and specified in the manual, the warranty is canceled and the manufacturer is exempt from liability.

The device is designed exclusively for the described application.

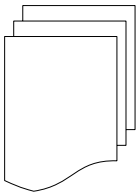
SUTO offers no guarantee for the suitability for any other purpose. SUTO is also not liable for consequential damage resulting from the delivery, capability or use of this device.

Table of contents

1. Safety instructions.....	5
2. Application.....	7
3. Features.....	7
4. Technical data.....	8
4.1 General data.....	8
4.2 Electrical data.....	8
4.3 Output signals.....	9
4.4 Accuracy	9
5. Dimensional drawing.....	9
6. Installation	10
6.1 Installation requirements.....	10
6.2 Wall mounting instructions	10
6.3 Installation procedure.....	12
6.4 Electrical connection	13
7. Configuration	15
7.1 Configuration without any display.....	15
7.2 Configuration using an external display	15
7.3 Configuration using the internal display.....	15
8. Operations using the internal display	16
8.1 User interface	16
8.1.1 Main screen.....	16
8.1.2 Quick buttons.....	17
8.1.3 Status bar.....	17
8.2 Main menus.....	18
8.3 Sensor settings	18
8.3.1 Basic setting.....	19
8.3.2 Analog output	20
8.3.3 Modbus settings.....	21
8.3.4 Alarm settings.....	21
8.3.5 Status.....	22
8.4 Logger settings.....	22
8.5 Files.....	23
8.6 Service info	24
8.7 System settings	25
8.8 Communication	25
9. Troubleshooting.....	26
9.1 LED indicators.....	26
9.2 Error indications.....	27
10. Signal outputs.....	28
10.1 Analog output	28
10.2 Digital output	28

10.3 Alarm output	29
11. Optional extra accessories.....	31
11.1 Sensor display.....	31
11.2 Service kit	31
12. Calibration.....	31
13. Maintenance.....	31
14. Disposal or waste.....	32
15. Warranty.....	32

1. Safety instructions



Please check if this instruction manual accords to the product type.

Please observe all notes and instructions indicated in this manual. It contains essential information which must be observed before and during installation, operation and maintenance. Therefore this instruction manual must be read carefully by the technician as well as by the responsible user / qualified personnel.

This instruction manual must be available at the operation site of the oil vapor sensor at any time. In case of any obscurities or questions, regarding this manual or the product, please contact the manufacturer.



WARNING!

Compressed air!

Any contact with quickly escaping air or bursting parts of the compressed air system can lead to serious injuries or even death!

- Do not exceed the maximum permitted pressure range (see sensors label).
- Only use pressure tight installation material.
- Avoid that persons get hit by escaping air or bursting parts of the instrument.
- The system must be pressureless during maintenance work.



WARNING!

Voltage used for supply!

Any contact with energized parts of the product, may lead to an electrical shock which can lead to serious injuries or even death!

- Consider all regulations for electrical installations.
- The system must be disconnected from any power supply during maintenance work.
- Any electrical work on the system is only allowed by authorized qualified personal.

**WARNING!****Permitted operating parameters!**

Observe the permitted operating parameters, any operation exceeding this parameters can lead to malfunctions and may lead to damage on the instrument or the system.

- Do not exceed the permitted operating parameters.
- Make sure the product is operated in its permitted limitations.
- Do not exceed or undercut the permitted storage and operation temperature and pressure.
- The product should be maintained and calibrated frequently, at least annually.

General safety instructions

- It is not allowed to use the product in explosive areas.
- Please observe the national regulations before/during installation and operation.

Remarks

- It is not allowed to disassemble the product.

**ATTENTION!****Measurement values can be affected by malfunction!**

The product must be installed properly and frequently maintained, otherwise it may lead to wrong measurement values, which can lead to wrong results.

Storage and transportation

- Make sure that the transportation temperature of the device is between -30 °C ... 70 °C.
- For transportation it is recommended to use the packaging which comes with the device.
- Please make sure that the storage temperature of the device is between -20 °C ... 50 °C.
- Avoid direct UV and solar radiation during storage.
- For the storage the humidity must be <90%, no condensation.

2. Application

The S 120 is an oil vapor sensor which is designed to monitor oil contents in compressed air and gases within the permissible operating parameters. These parameters can be found in the technical data section.

The S 120 oil vapor sensor is mainly used in compressed air systems in industrial environment. The S 120 oil vapor sensor is not developed to be used in explosive areas. To evaluate its applicability in explosive areas, please contact the manufacturer.

3. Features

- Measures oil vapor contents in compressed air and other gases.
- Easy connection through sampling hose and quick connect.
- Applicable in the permanent or portable applications.
- Measures down to 0.003 mg/m³.
- PID sensor for the highest accuracy.
- Service and alarm indication through LEDs.
- Connectable to display and data logger of SUTO as well as third-party display and control units.
- IP65 casing provides robust protection in rough industrial environment.
- Optional local display for showing actual readings without extra cable connection.

4. Technical data

4.1 General data

CE	
Parameters	Standard unit oil vapor contents: mg/m ³
Principle of measurement	Photo ionization
Sensor	PID (photo ionization detector)
Measuring medium	Compressed air and gases free of corrosive, aggressive, caustic and flammable constituents
Measuring range	0.003 ... 10 mg/m ³
Resolution	0.001 mg/m ³
Sample flow range	< 2 l/min, measuring gas is released to ambient
Operating temperature	-20 °C ... 50 °C
Gas humidity	< 40% rel. humidity, no condensation
Operating pressure	3 ... 15 barg (higher pressure on request)
Low pressure (optional)	0.5 ... 2 barg
Housing material	PC, Al alloy
Protection class	IP65
Dimensions	See dimensional drawing on the next page.
Display (optional)	5" graphic display with touch interface
Interface	USB (only with Display option) RS-485
Weight	2.4 kg
Sensor durability	6,000 operating hours

4.2 Electrical data

Power supply	24 VDC ± 5%, 10 W
--------------	-------------------

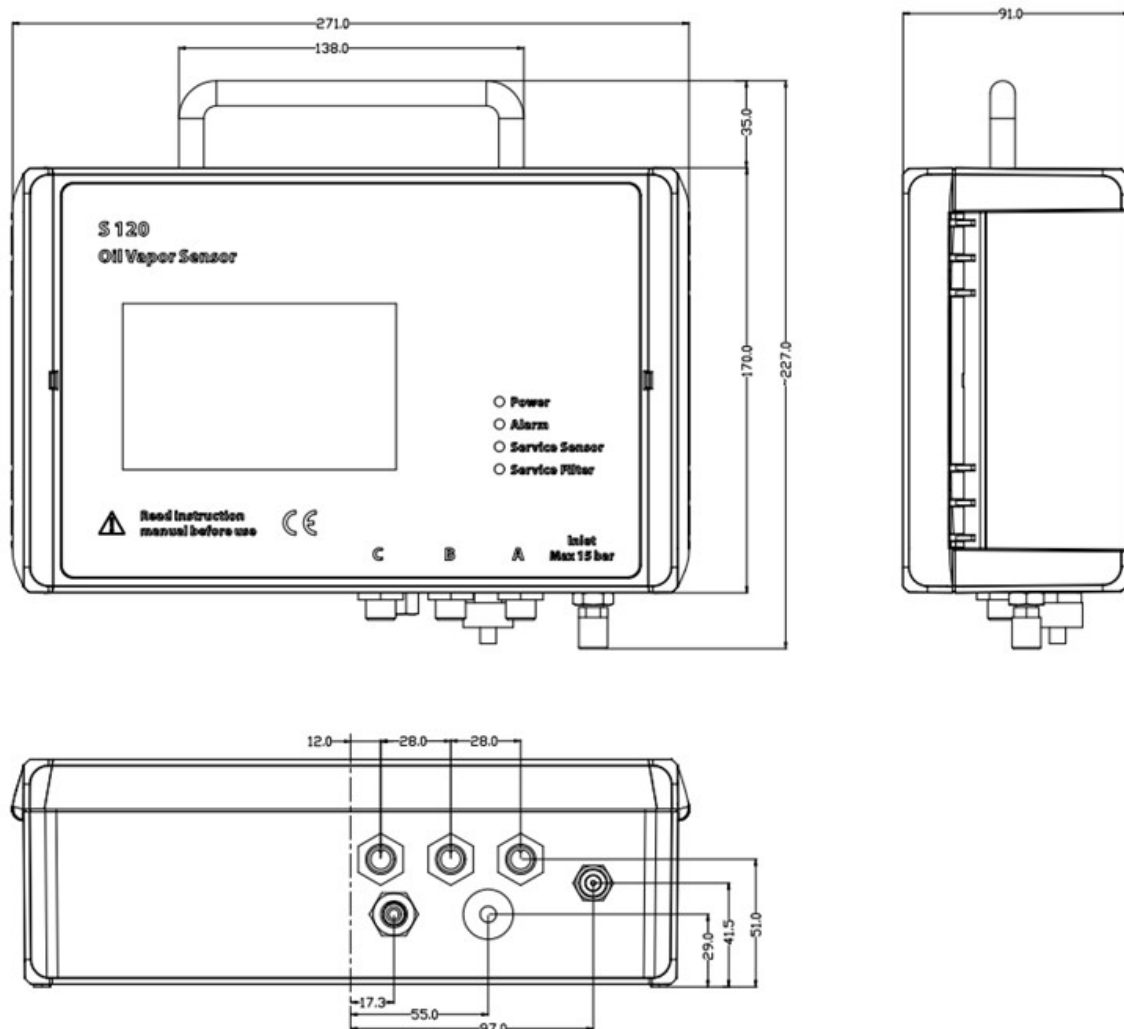
4.3 Output signals

Analogue output	4 ... 20 mA
Digital output	RS-485, Modbus / RTU
Alarm output	Relay, NC, 32 VDC, 500 mA

4.4 Accuracy

Accuracy	5% of reading \pm 0.003 mg/m ³
----------	---

5. Dimensional drawing



6. Installation

Please make sure that all components listed below are included in your package.

Qty	Description	Item No.
1	S120 oil vapor sensor	S604 1201/ S604 1202/ S604 1203
3	M12 connectors	C219 0059
1	1.5 m teflon hose with fast connector	A554 0003
1	Mounting brackets	No P/N
1	Instruction manual	No P/N
1	Calibration certificate	No P/N

6.1 Installation requirements

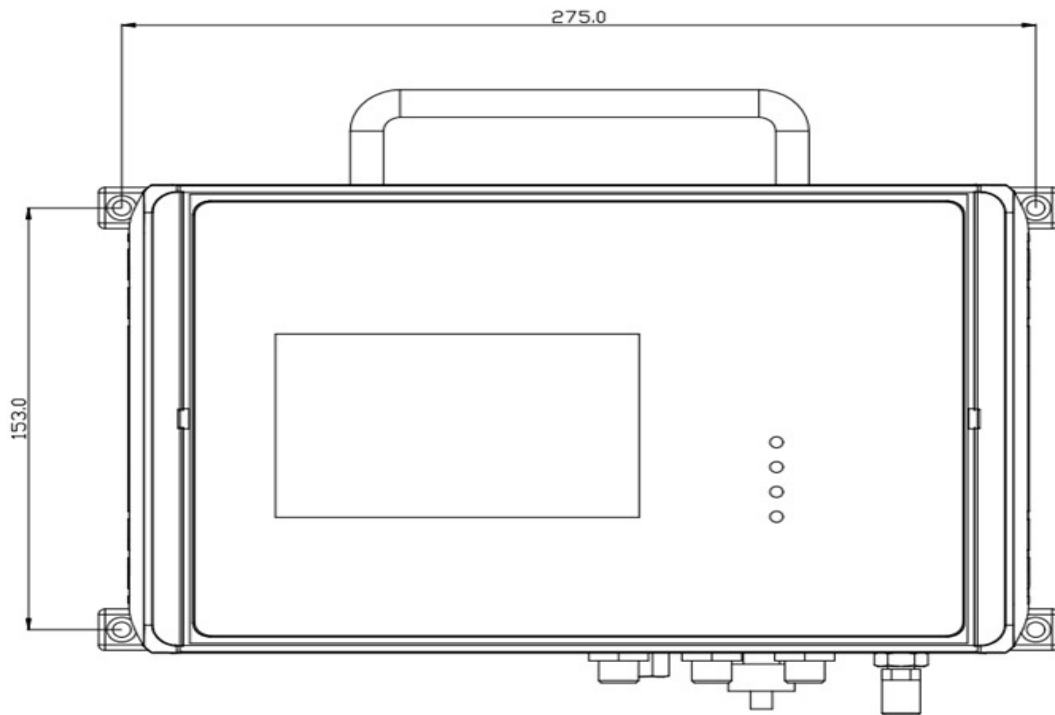
The S 120 comes with two versions:

- S 120 for stationary use. The stationary version comes with four mounting brackets which can be mounted from the backside of the instrument at each corner. This allows an easy installation at a wall.
- S 120-P for portable use. The portable version comes in a transport case.

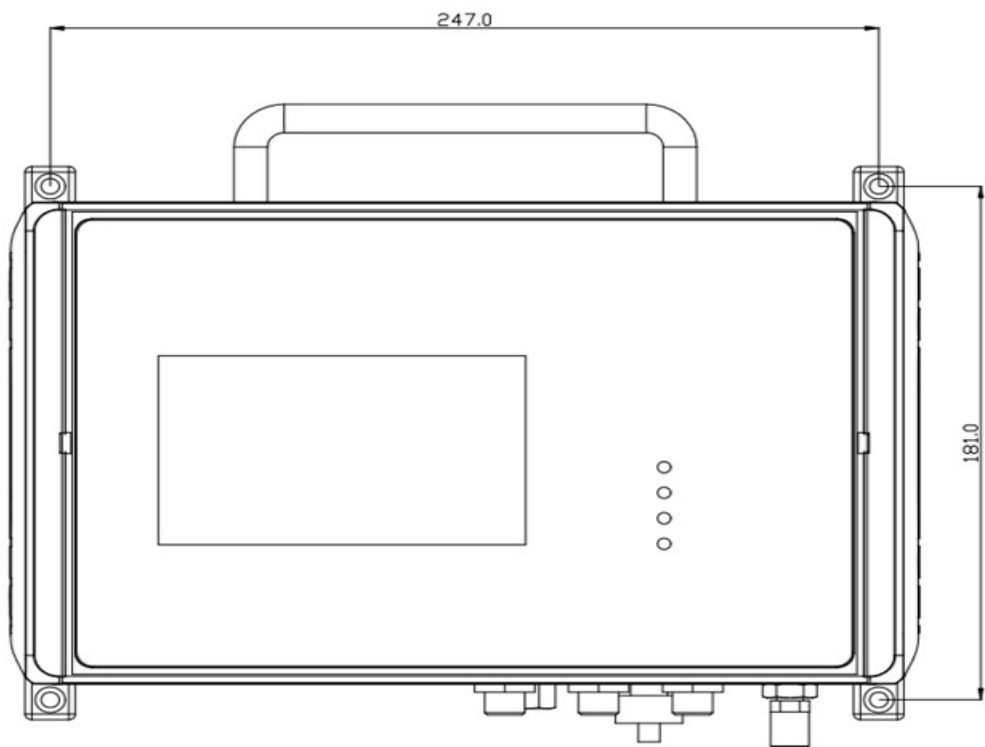
6.2 Wall mounting instructions

The device can be mounted on the wall using the supplied brackets. Please use one of the attached dimensions to prepare your holes.

Method 1.

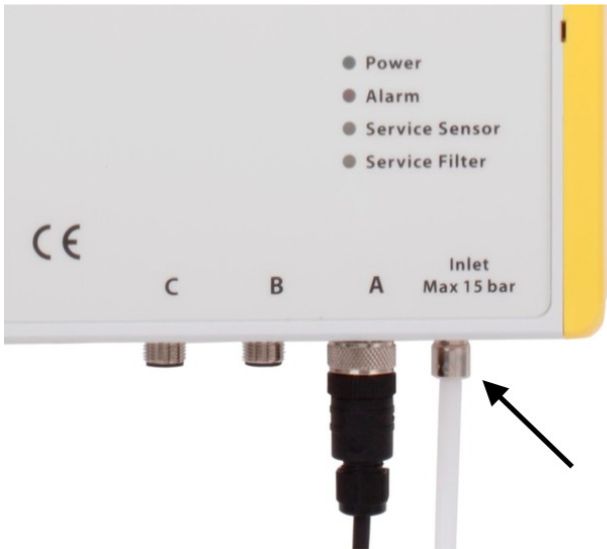


Method 2.



6.3 Installation procedure

The following steps explain the procedure of an appropriate installation.



1. Most importantly, before you connect S 120 to the compressed air, purge air out from the connection point to remove any residual contamination!

2. Connect the teflon hose with the inlet of the S 120 as shown in the picture.



3. Connect the other end of the teflon hose with a quick connector. The teflon hose with quick connector is used to connect the S 120 to the process.

Please consider the following recommendations for a successful measurement result:

- All components from the sampling point to the S 120 must be oil and grease free.
- Ambient and gas temperature must be within the specified ranges stated in section 4.1 General data.

- The inlet gas must be pressurized with the valid ranges.
- The sampling gas must be dry (< 40% RH) and clean.
- Ensure that valves at the sampling point are not lubricated.

**ATTENTION!**

Avoid contamination with oil or grease!

It will lead to very slow measurement or impossible measurement results!

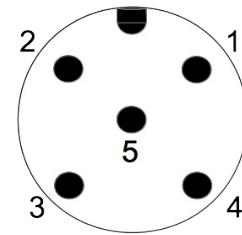
6.4 Electrical connection

Connection to the following external display units from SUTO.

S 120		Color code	S 330 / 331		S 320	
Pin	Signal		Terminal	Pin	Terminal	Pin
A.1	SDI	brown	A	1	G	6
A.2 / B.2	-V _b	white		2		7
A.3 / B.3	+V _b	blue		3		8
A.4 / C.4	+D	black		4		
A.5 / C.5	-D	grey		5		
B.1	PE	brown		GND		
A.1	SDI	brown	B	1		
A.2 / B.2	-V _b	white		2		
A.3 / B.3	+V _b	blue		3		
A.4 / C.4	+D	black		4		
A.5 / C.5	-D	grey		5		
B.1	PE	brown		GND		

Connection to third-party displays and control units

Connector	Pin 1	Pin 2	Pin 3	Pin 4	Pin 5
A	SDI	-V _b	+V _b	+D	-D
B	PE	-V _b	+V _b	+I	-I
C	Relay	Relay	GND	+D	-D
	brown	white	blue	black	grey



Legend to pin assignment

- SDI Digital signal (internal use)
- V_B Negative supply voltage
- +V_B Positive supply voltage
- +I Positive 4 ... 20 mA signal
- I Negative 4 ... 20 mA signal
- +D RS-485, Modbus / RTU
- D RS-485, Modbus / RTU
- Relay Alarm output
- PE Earth connection
- GND Communication ground

7. Configuration

The S 120 is delivered with standard ex-work configuration or with specific customer settings according to the order.

Standard ex-work configuration

Scaling : 4 mA = 0.000 mg/m³
 20 mA = 10.000 mg/m³

Alarm : 1.000 mg/m³, up

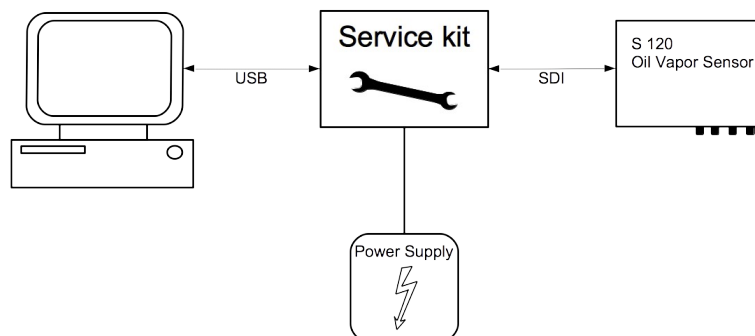
Oil type : Isobutene

Modbus : Device address = 1
 Baud rate = 19200
 Framing/parity/Stop bit = 8, N, 1
 Transmission mode = RTU

7.1 Configuration without any display

Configurations except the ex-work configuration can be made by using the service kit. Please ensure that the power supply of either S 120 or the service kit is connected because the USB port cannot supply enough power.

For more information, refer to the instruction manual of Service Kit.



7.2 Configuration using an external display

Please see the instruction manual of S 330/331.

7.3 Configuration using the internal display

Please see sensor settings in the next chapter.

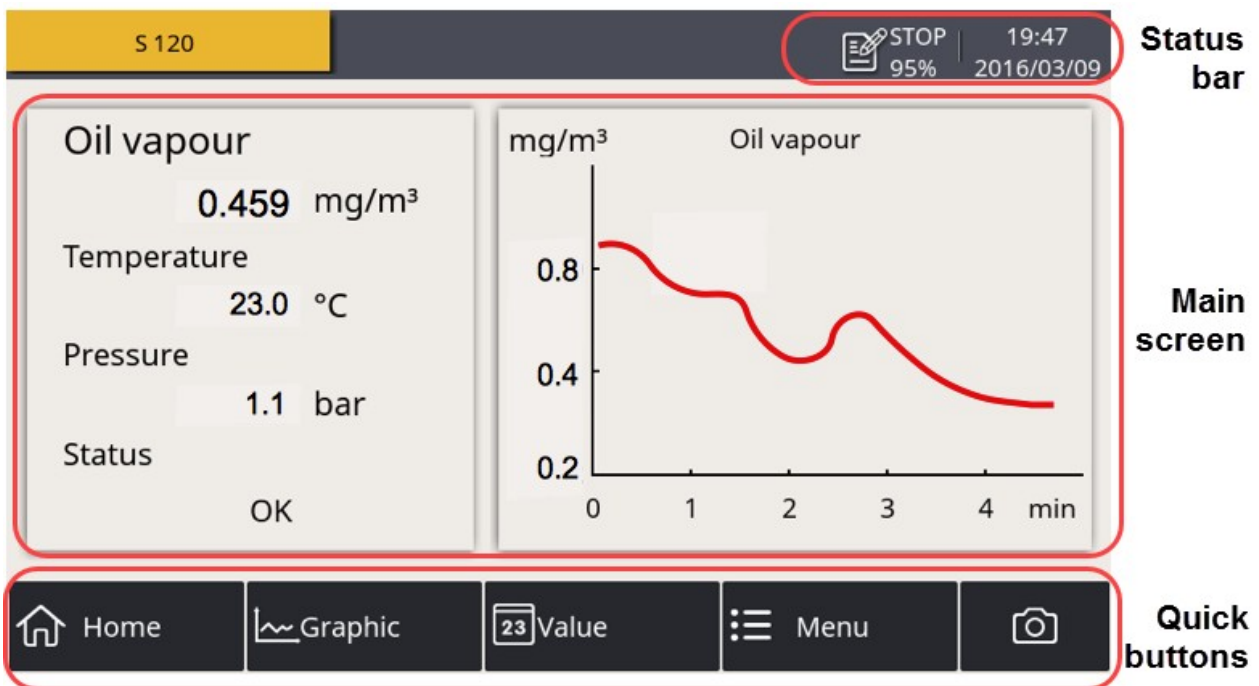
8. Operations using the internal display

If your S 120 is equipped with the optional internal display, you can configure the sensor settings by using this display.

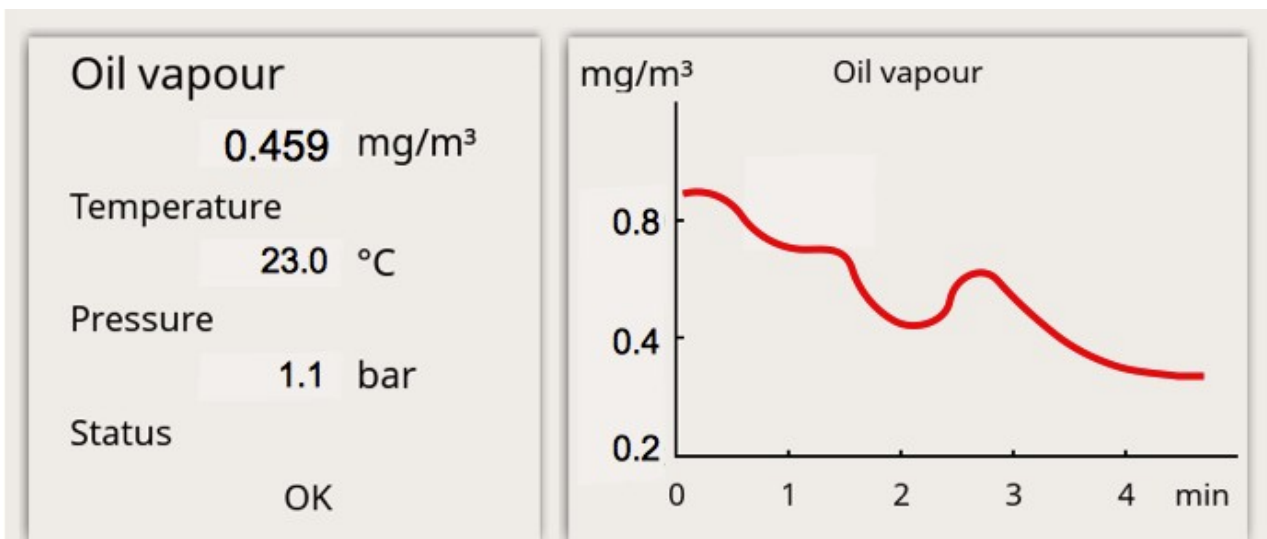
This chapter describes the usage of the display and provides instructions on how to configure the sensor.

8.1 User interface

The screen below shows the user interface of the S 120.



8.1.1 Main screen



- On the left side the online measuring result is shown:
 - **Oil vapor:** oil vapor content per cubic meter at reference condition
 - **Temperature:** sensor casing temperature
 - **Pressure:** pressure at the sensor
 - **Status:** sensor status (for service)
- On the right side the online graphic view is shown.

8.1.2 Quick buttons

In the main screen,

- Press the "**Home**" button to return to the home view which is shown above.
- Press the "**Graphic**" button to show the graphic in full screen.
- Press the "**Value**" button to show the values in full screen.
- Press the "**Menu**" button for further operations. For more information, see the section 8.2.
- Press the "**Camera**" button to capture an image of the current screen and store it in the memory for any future retrieve through the S4A data logger software.

8.1.3 Status bar

Description of display icons in the status bar.



USB stick connected



System error



Sensor connection has changed, not matching with configuration



Sensor unit is not matching with configuration



Logger status



RTC backup battery status



Sensor calibration is expired



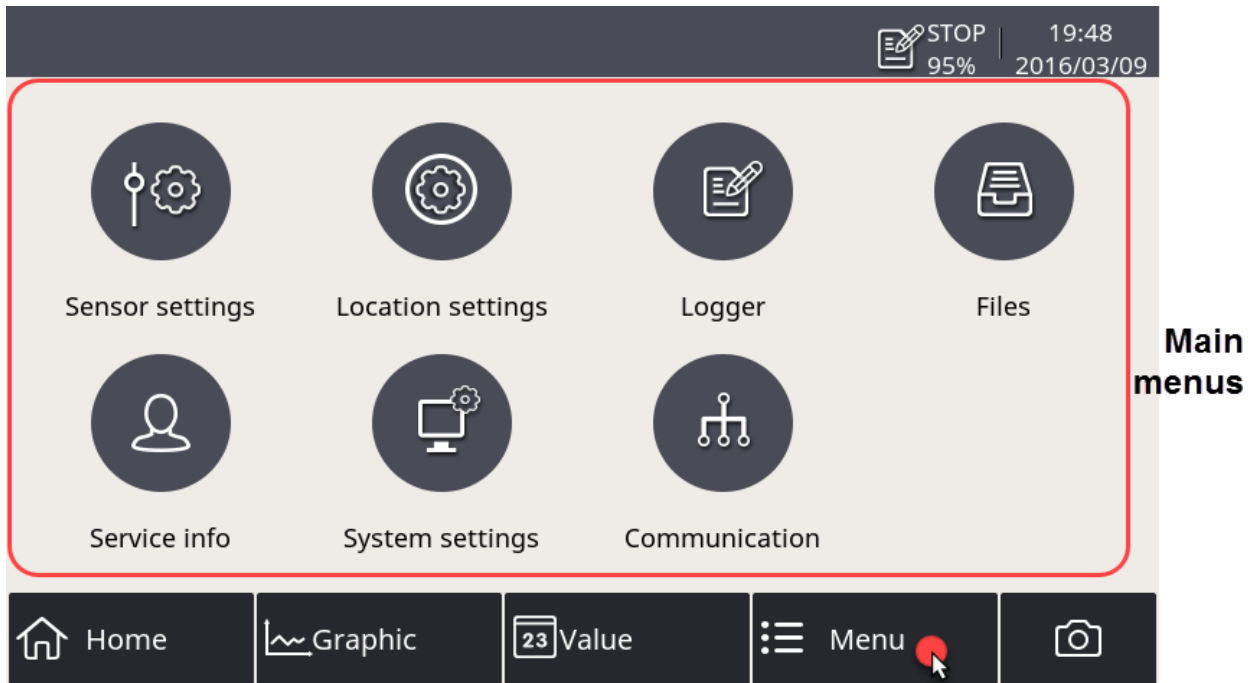
USB to PC connected



Alarm triggered

8.2 Main menus

After you click the **Menu** button, the following screen appears displaying all operating menus.



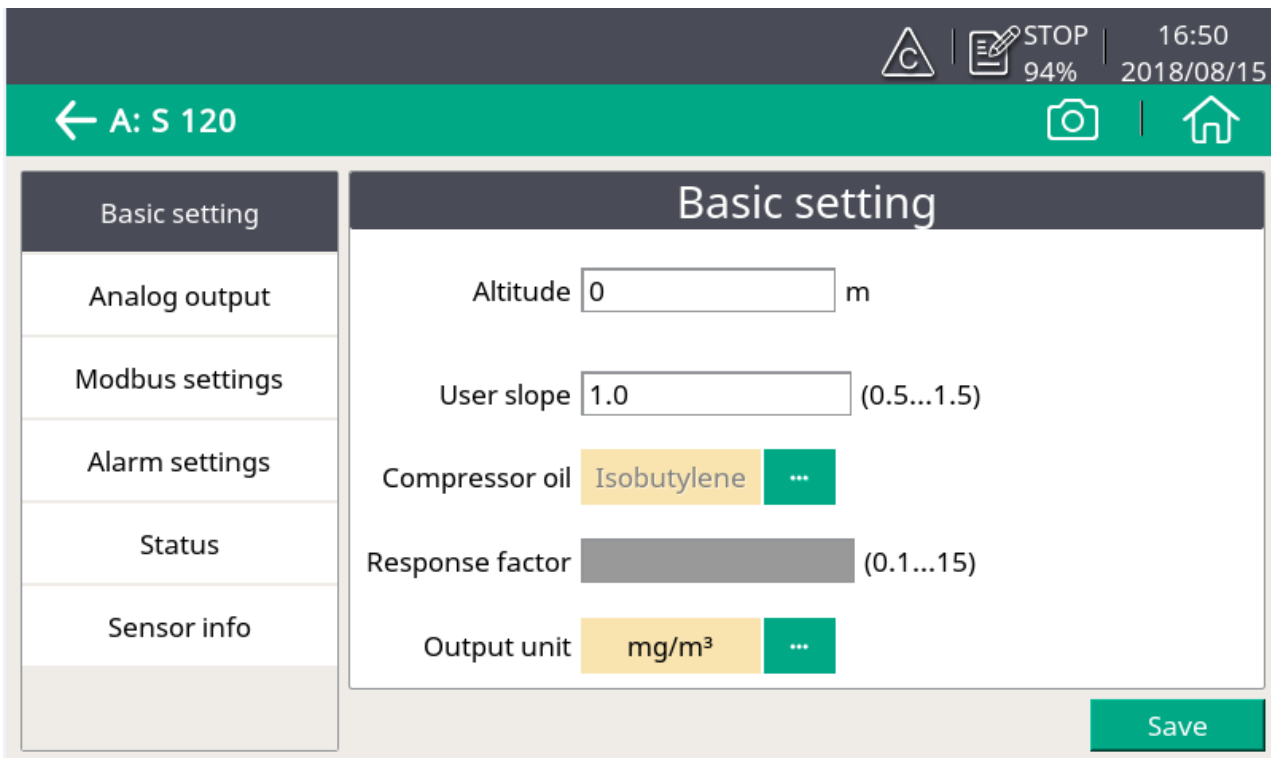
The main menu consists of the following:

Sensor settings	To view and check the S 120 sensor settings. For more information, see section 8.3.
Location setting	Settings are fixed.
Logger	To view and change S 120 data logger settings. For more information, see the see section 8.4.
Files	To check all recorded files and the memory status. For more information, see section 8.5.
Service info	To view useful information in case of a service issue. For more information, see section 8.6.
Service setting	To view service related settings. For more information, see section 8.7.
Communication	Modbus master, field bus RS-485.

8.3 Sensor settings

Before start measurement, configure sensor settings through the **Menu > Sensor settings** menu.

8.3.1 Basic setting



1. Provide below information:

Altitude

Enter the Altitude.

To obtain an accurate oil vapor measurement, you must input your altitude. Valid values are only positive. If you are in a location where the real altitude is negative, enter 0 instead of a negative value.

User slope

Enter a value in the value range.

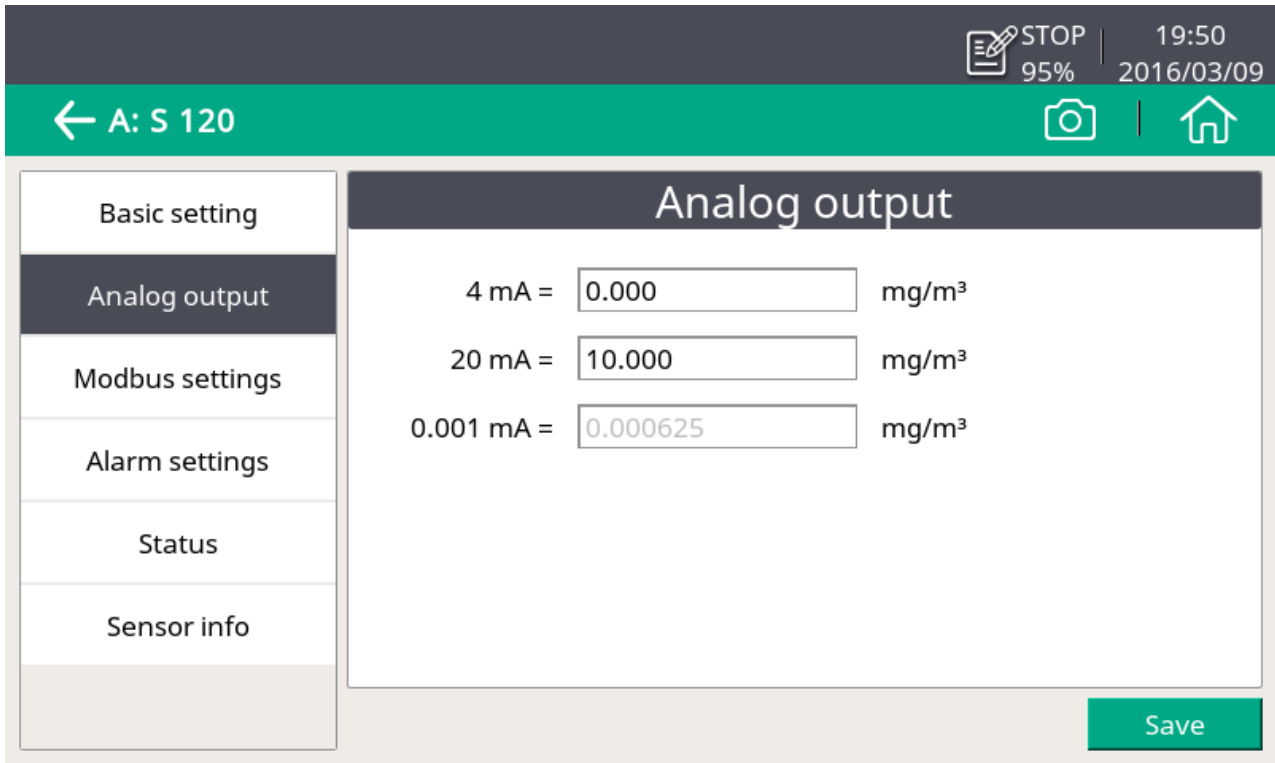
Output unit

Select the desired output unit.

2. Click **Save**.

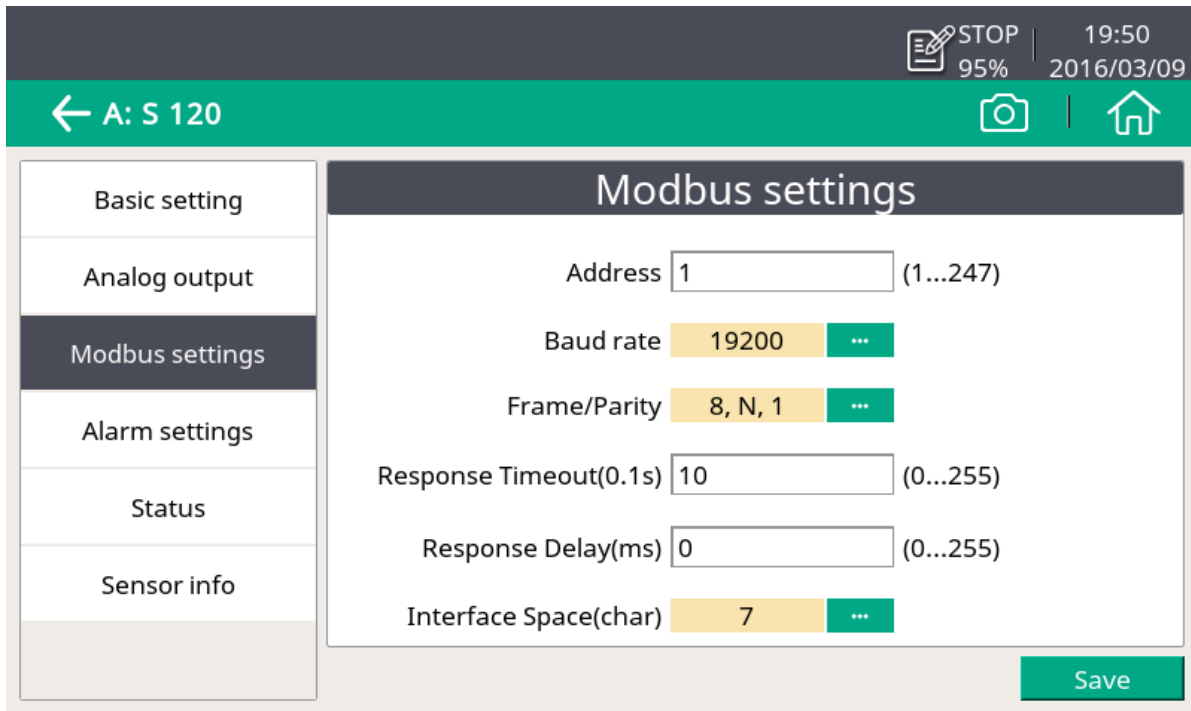
8.3.2 Analog output

Configure the scaling of analog output and click Save. Whenever the output unit is changed, it is recommended to adjust the scaling of the analog output.



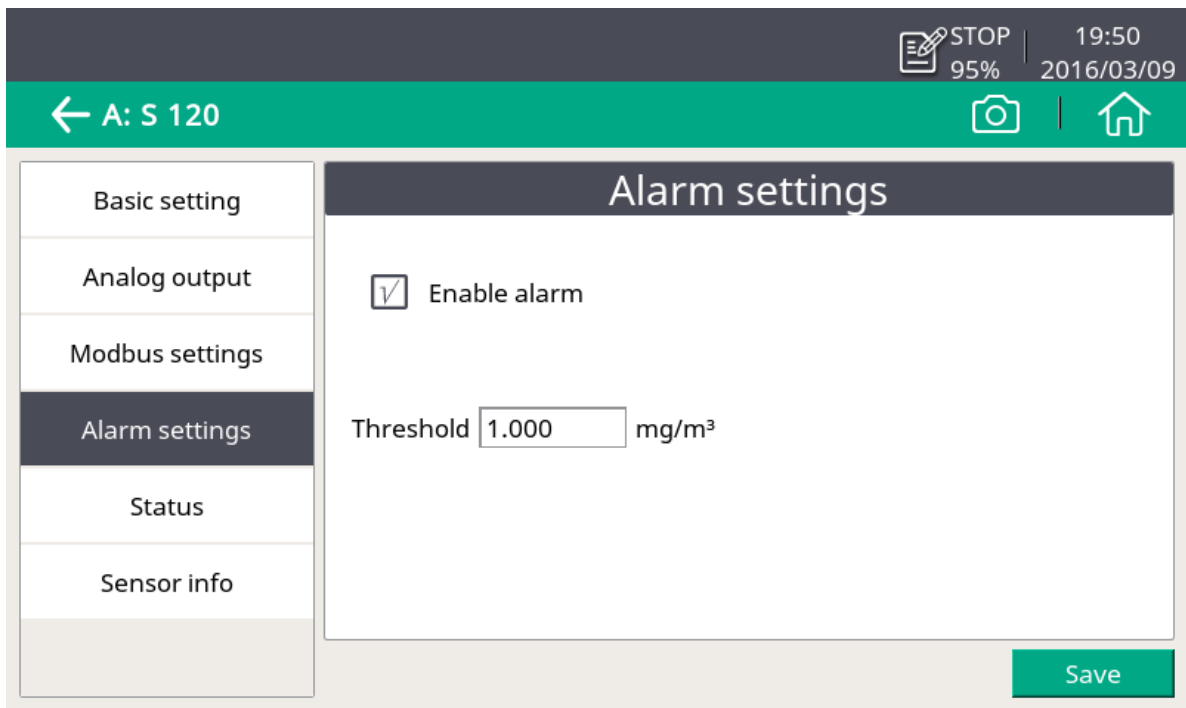
8.3.3 Modbus settings

Please do not change the Modbus settings.



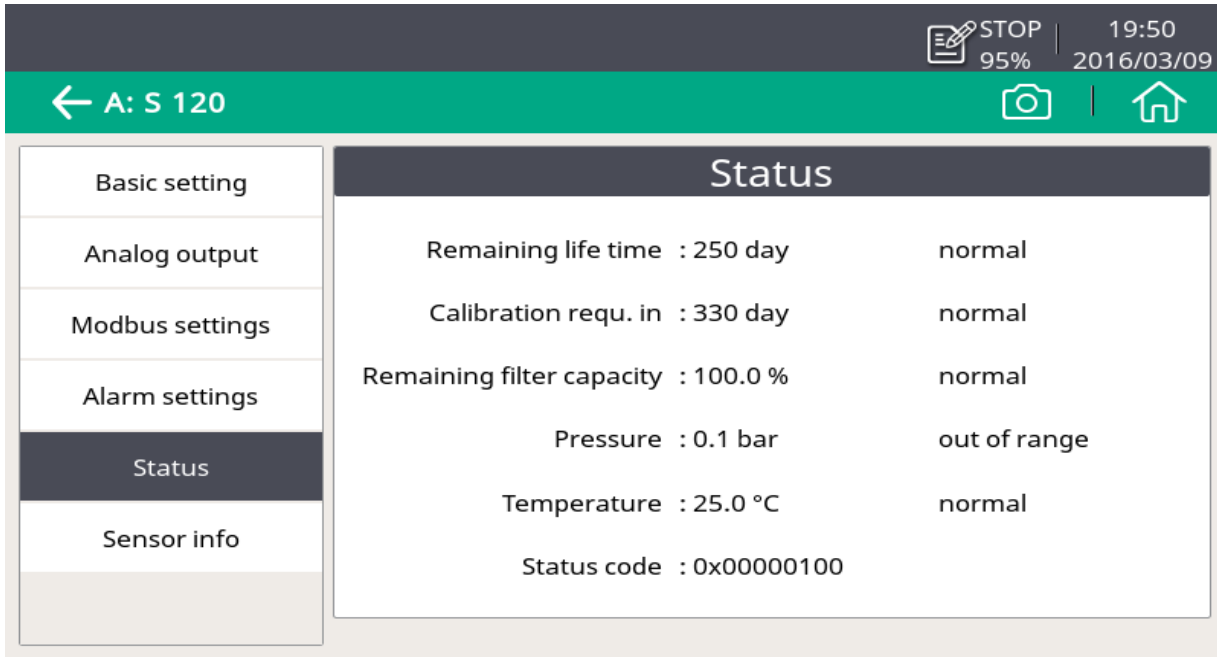
8.3.4 Alarm settings

Enter the desired threshold of oil vapor to activate the alarm, and click Save.



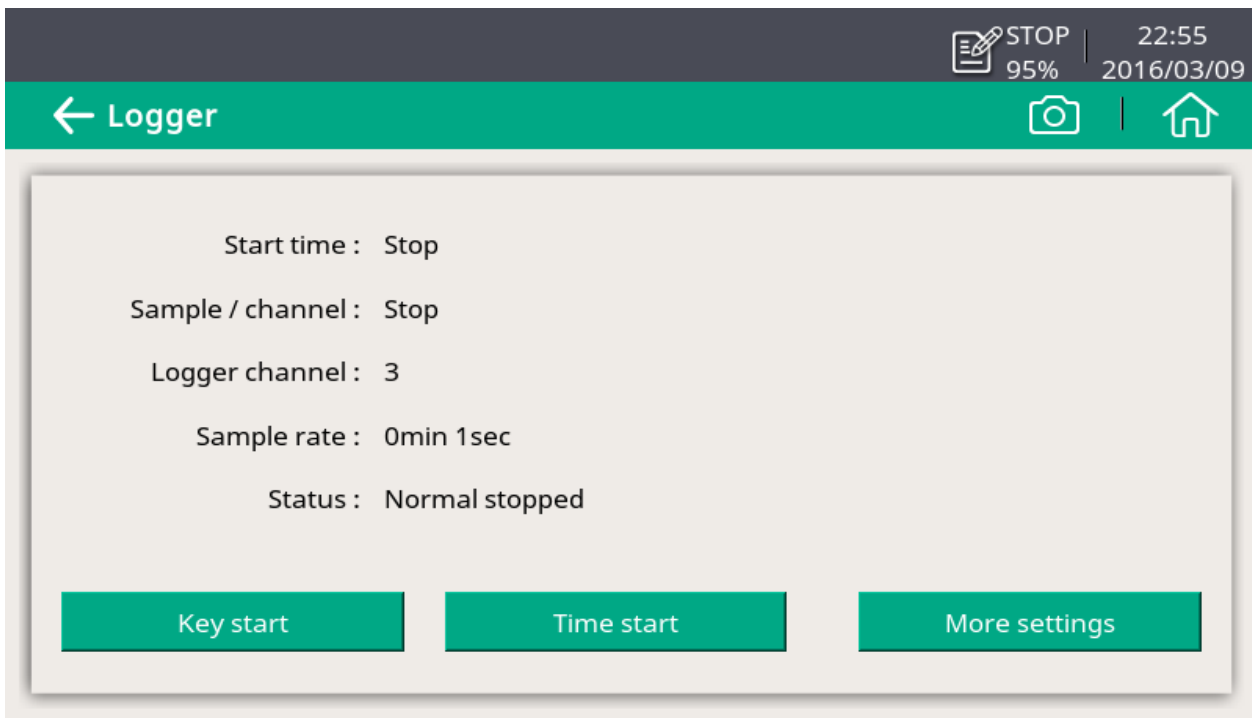
8.3.5 Status

The status shows you useful information in case of a service issue.



8.4 Logger settings

To view and change the logger settings and status, click the **Menu > Logger settings** menu.

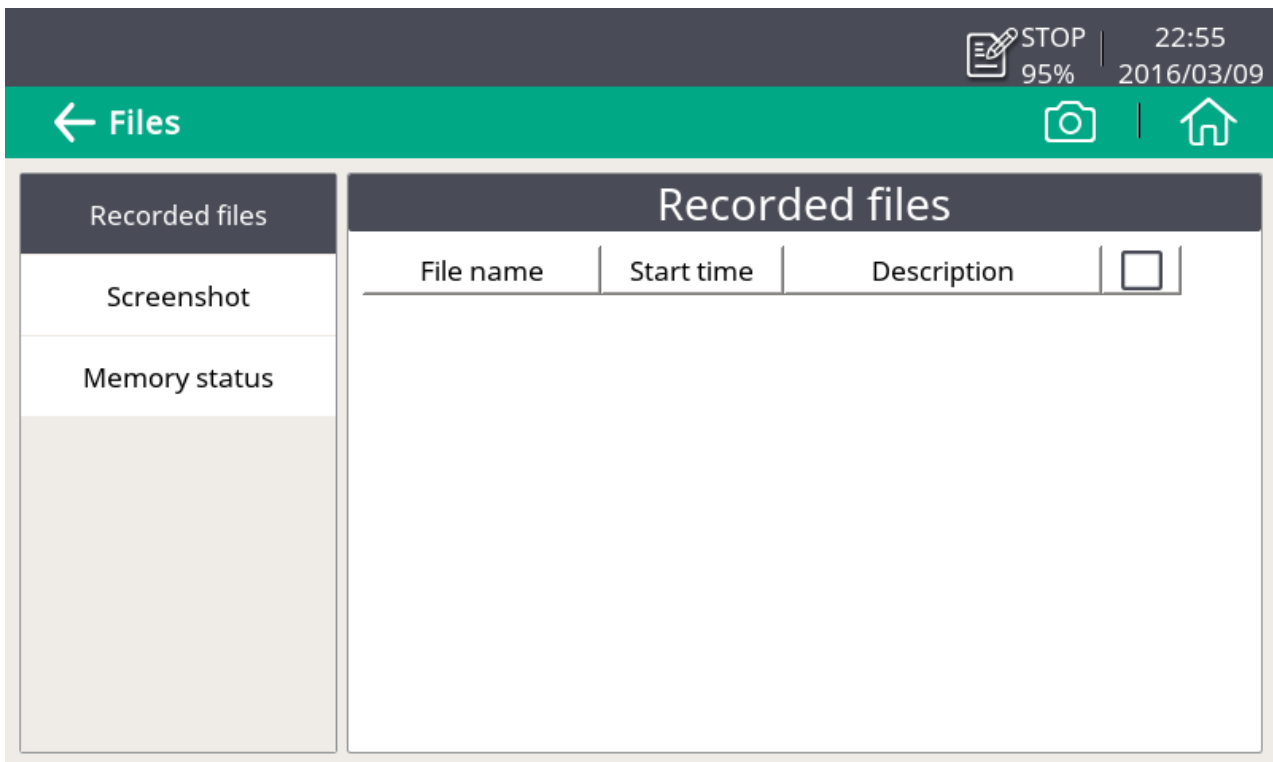


Start time	Logger start time
Sample / Channel	Recorded sample number per logging channel
Logger channel	Total recording channel number
Sample rate	Recording interval
Status	Logger status

Recorded data can be downloaded to an USB memory drive on site (USB OTG Drive) or can be transferred to a PC using the supplied USB cable and the software S4A.

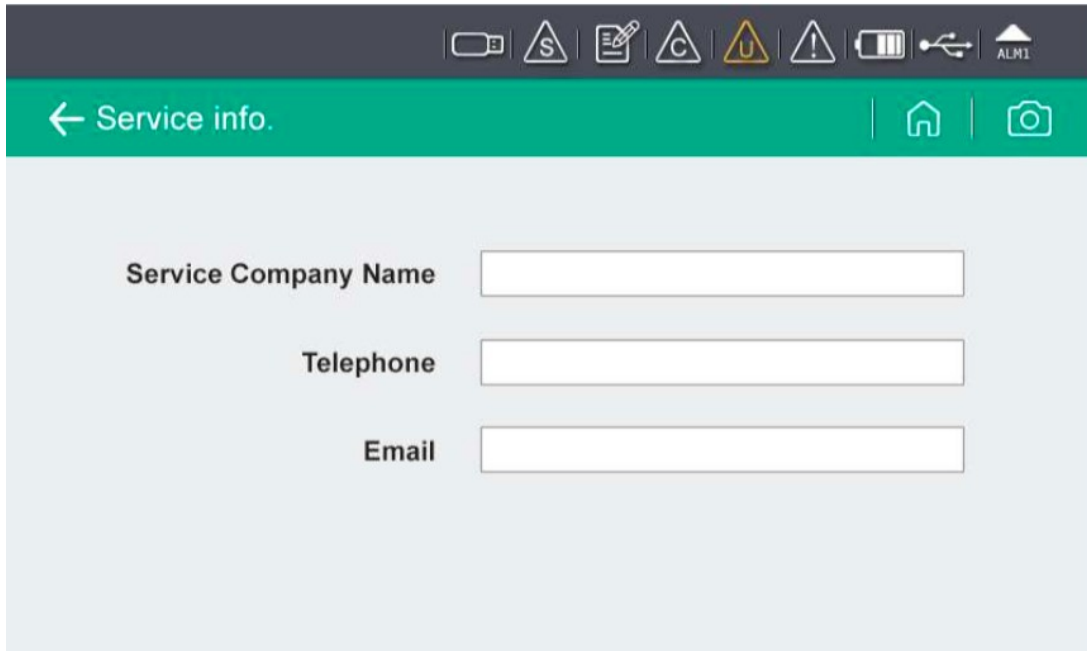
8.5 Files

To view all recorded files, click the **Menu > Files** menu. Single files can be selected to show recording details or be deleted. Memory status indicates the available memory.



8.6 Service info

To view the contact information of the company that provides the service, click the **Menu > Service info** menu.

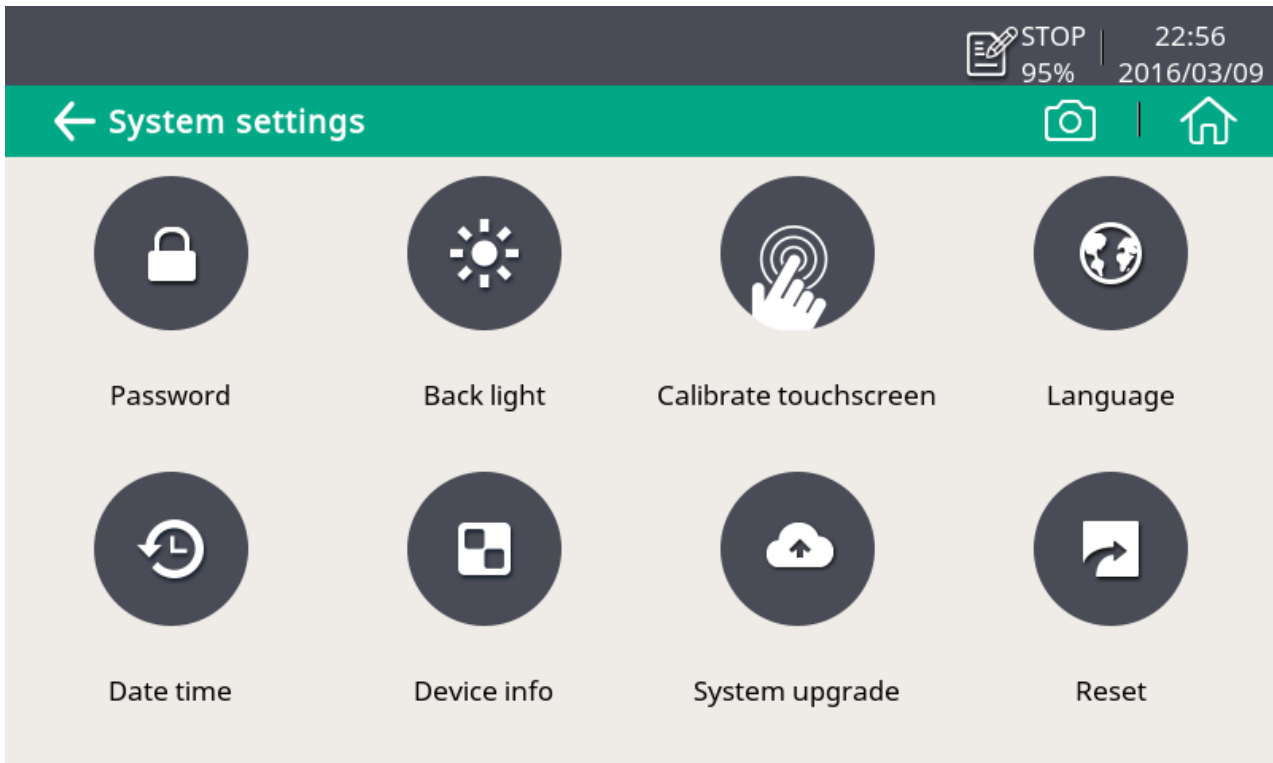


The screenshot displays a mobile application interface for 'Service info'. At the top, there is a dark grey status bar with icons for signal strength, Wi-Fi, battery, and 'ALM1'. Below this is a green header bar with a white back arrow and the text 'Service info.'. To the right of the header are icons for home and camera. The main content area is light grey and contains three text input fields:

- Service Company Name**: A white rectangular input field.
- Telephone**: A white rectangular input field.
- Email**: A white rectangular input field.

8.7 System settings

To view and change S120 system-level settings, click the **Menu > System settings** menu.



Password

To set the password to protect some critical operations from unauthorized access.

Back light

To adjust brightening and dimming time out.

Calibrate touch screen

To calibrate touch accuracy

Language

To select the user interface language

Date time

To set the date and time

Device info

To show information for service cases

System upgrade

To upgrade the system.

Reset

To reboot the display.

8.8 Communication

This sub-menu provides no function.

9. Troubleshooting

This chapter describes how to troubleshoot S 120 based on error indications such as LED indicators, relay status, and current output.

9.1 LED indicators

- **Power**
- **Alarm**
- **Service Sensor**
- **Service Filter**

- Power LED—Indicates the power status.
- Alarm LED—Indicates the alarm status.
- Service Sensor LED—Indicates whether the sensor need to be serviced.
- Service Filter LED—Indicates whether the service filter need to be replaced.

LED indicator	Causes	Action
Service Filter LED is flashing	Filter capacity is less than 10%	N/A
Service Filter LED is on	Filter capacity is less than 1%	Contact the manufacturer for filter replacement.
Service Sensor LED is on	<ul style="list-style-type: none"> • The UV lamp life time will expire in one day or has expired. • The sensor calibration expires. 	Contact the manufacturer for UV lamp replacement or for calibration service
Service sensor LED is flashing	<ul style="list-style-type: none"> • The UV lamp life time is less than 30 days. • The valid time for the sensor calibration is less than 30 days. 	N/A

9.2 Error indications

This table lists the main error indications with S 120 and the corresponding instructions to locate and fix errors.

When the alarm LED is on,

1. Measure the current output and relay status.
2. Refer to the following table to proceed.

Error indications	Possible causes	Action
All LEDs are on	The internal communication is down.	Contact the manufacturer.
<ul style="list-style-type: none"> • Alarm LED is on • Relay is open • Current output = normal (4 ... 20 mA) 	<ul style="list-style-type: none"> • Over threshold • UV lamp life time expired • Calibration expired • Filter capacity < 1% 	Check the Service Sensor LED and Service Filter LED to locate the problem.
<ul style="list-style-type: none"> • Alarm LED is on • Relay is open • Current output = 3.5 mA 	<ul style="list-style-type: none"> • Low temperature • Auto-calibration failed • Inner communication failed 	Increase the temperature and if the error indications persist, contact the manufacturer.
<ul style="list-style-type: none"> • Alarm LED is on • Relay is open • Current output = 21 mA 	<ul style="list-style-type: none"> • High temperature 	Check the environment conditions and improve accordingly.
<ul style="list-style-type: none"> • Alarm LED is off • Relay is closed • Current output = 3.5 mA 	<ul style="list-style-type: none"> • High pressure • Low pressure 	
<ul style="list-style-type: none"> • Alarm LED is off • Relay is closed • Current output = 21 mA 	Over range	

10. Signal outputs

10.1 Analog output

The S 120 has an analog output range of 4 ... 20 mA. This output is scaled to:

- 4 mA = 0.000 mg/m³
- 20 mA = 10.000 mg/m³

10.2 Digital output

Modbus operation

Index	Channel description	Unit	Resolution	Format	Length	Modbus address
0	Gas temperature	°C	0.1	FLOAT	4-Byte	0
1	Oil vapor content	mg/m ³ ppm	0.001	FLOAT	4-Byte	2
2	Pressure	bar	0.1	FLOAT	4-Byte	4
3	Remaining life time	day	1	FLOAT	4-Byte	6
4	Remaining filter capacity	%	0.1	FLOAT	4-Byte	8
5	System status		1	UINT32 U	4-Byte	10
6	Sensor output	mV	0.001	FLOAT	4-Byte	12

Remarks

All numbers are in the little-endian format.

Interpretation of system status

Bit	Description	Bit	Description
0	Alarm triggered at oil vapor channel	8	Pressure too low
1	Oil vapor content over range	9	Pressure too high
2	Calibration will overdue soon	10	Temperature too low

3	Calibration overdue	11	Temperature too high
4	Sensor life time will overdue soon	12	Inner communication failed
5	Sensor overdue	13	Sensor signal is too small
6	Filter will overdue soon	14	Sensor signal is too high
7	Filter overdue		

10.3 Alarm output

The S 120 has a relay alarm output. It is possible to monitor such as the oil vapor content and give an alarm at a particular threshold value.

Alarm relay specifications:

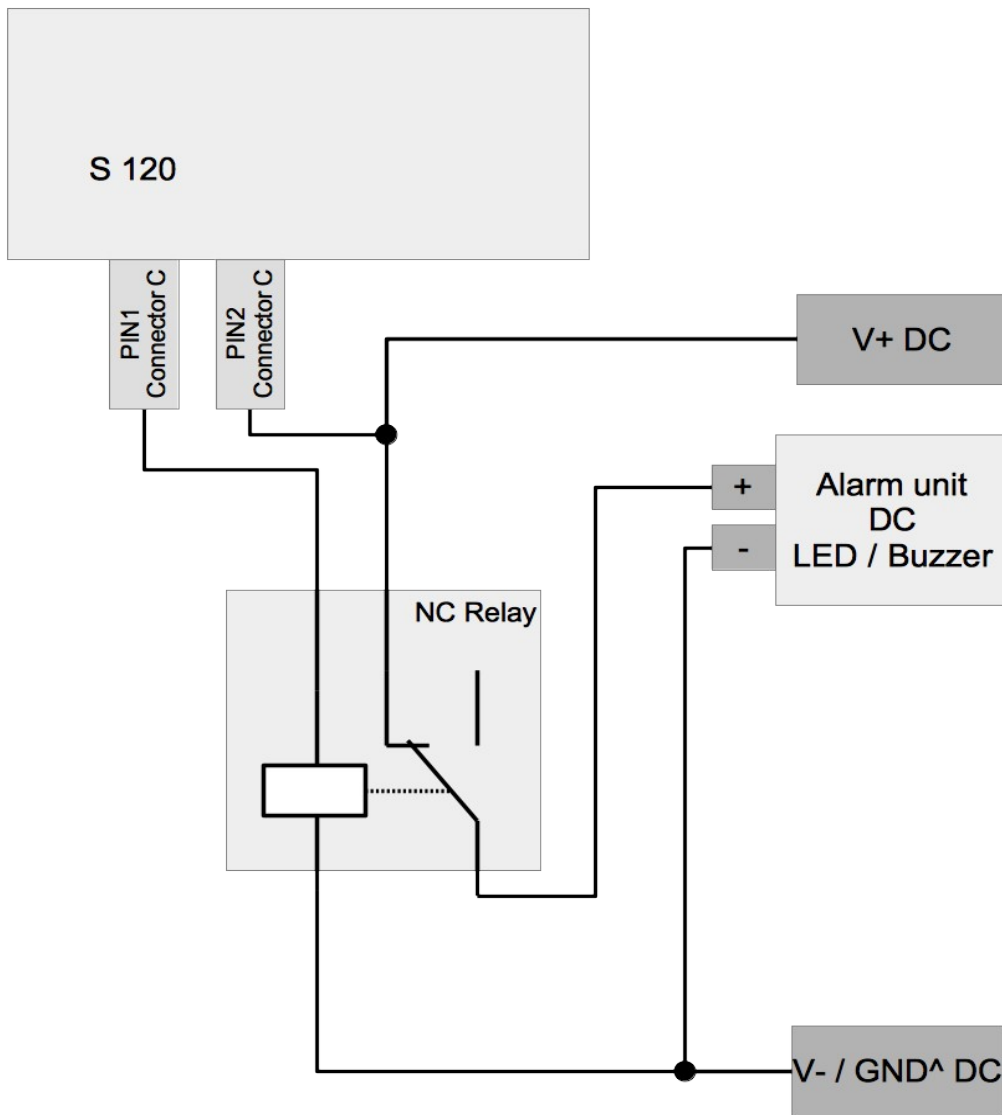
Rating: 32 VDC / 500 mA
 Power-off state: NO (normally open)
 Default threshold value: 1.0 mg/m³

Please find the different states in the table below.

Situation	Relay state	Alarm LED
S 120 is powered off	OPEN	OFF
S 120 is powered on / no alarm value is reached	CLOSED	OFF
S 120 is powered on / alarm value is reached	OPEN	ON

The advantage of the normally open relay is, that both critical situations can be detected, not only if the alarm value is reached, also if the device has power loss.

To power on an external buzzer or alarm light with the device, you need to invert the signal. For this an external alarm circuit is needed in addition. Please see the example below.



11. Optional extra accessories

11.1 Sensor display

The sensor display enables you to do the following:

- View the actual values.
- View error messages.
- Change settings.

11.2 Service kit

The service kit enables you to configure a S 120 that is not equipped with the local display. For more information about cabling, see 7.1 Configuration without any display.

12. Calibration

The sensor is calibrated before delivery. The calibration date is printed on the certificate which is supplied together with the sensor.

The accuracy of the sensor is regulated by the on-site conditions. Parameters such as oil, high humidity or other impurities can affect the calibration and furthermore the accuracy. We recommend to calibrate the sensor at least once per year. The calibration is excluded from the instruments warranty. To request the calibration service, please contact the manufacturer.

13. Maintenance

To clean the sensor and its accessories, you are recommended to use moist cloth only.



ATTENTION!

Do not use isopropyl alcohol to clean the display!

14. Disposal or waste



Electronic devices are recyclable material and do not belong in the household waste.

The sensor, the accessories and its packings must be disposed according to your local statutory requirements.

The dispose can also be carried by the manufacturer of the product, for this please contact the manufacturer.

15. Warranty

SUTO provides a warranty for this product of 24 months covering the material and workmanship under the stated operating conditions from the date of delivery. Please report any findings immediately and within the warranty time. If faults occurring during the warranty time SUTO will repair or replace the defective unit, without charge for labor and material costs but there is a charge for other service such as transport and packing costs.

Excluded from this warranty are:

- Damage caused by:
 - Improper use and non-adherence to the instruction manual.
 - Use of unsuitable accessories.
 - External influences (e.g. damage caused by vibration, damage during transportation, excess heat or moisture).
- Sensor lifetime, which is determined by the operating hours (6,000-hour sensor durability).
- Filter capacity, which is determined by the operating hours (8,640-hour or 360-day filter lifetime).

The warranty is canceled when one of the following situations occurs:

- Users open the measurement instrument without a direct request written in this instruction manual.
- Repairs or modifications are undertaken by third parties or unauthorized persons.
- The serial number has been changed, damaged or removed.

Other claims, especially those for damage occurring outside the instrument are not included unless responsibility is legally binding.

Warranty repairs do not extend the period of warranty.



ATTENTION!

Batteries have a reduced warranty time of 12 months.

SUTO iTEC GmbH

Werkstr. 2
79426 Buggingen
Germany

Tel: +49 (0) 7631 936889-0

Fax: +49 (0) 7631 936889-19

Email: sales@suto-itec.com

Website: <http://www.suto-itec.com>

SUTO iTEC (ASIA) Co., Ltd.

Room 10, 6/F, Block B, Cambridge Plaza
188 San Wan Road, Sheung Shui, N.T.
Hong Kong

Tel: +852 2328 9782

Fax: +852 2671 3863

Email: sales@suto-itec.asia

Website: <http://www.suto-itec.com>