

Diamond Cut Earrings

Weight = Stone Wt. / Net Wt.



ER181916DC
WT: 1.6 gm



ER1819173T
WT: 3.4 gm



ER1820743T
WT: 2.3 gm



ER182075DC
WT: 2.95 gm



ER182070DC
WT: 2.7 gm



ER182071DC
WT: 2.3 gm



ER182072DC
WT: 2.3 gm



ER182073DC
WT: 2.1 gm



ER182076DC
WT: 3.05 gm



ER1821702T
WT: 2.2 gm



JE1811552T
WT: 4.05 gm



ER1821032T
WT: 9.3 gm



JE181070DC
WT: 1.95 gm



JE181136DC
WT: 5.1 gm



JE181143DC
WT: 2.05 gm



JE181167DC
WT: 1.7 gm

Diamond Cut Earrings

Weight = Stone Wt. / Net Wt.



JE100560DC
WT: 1.4 gm



JE100562DC
WT: 1.33 gm



ER181721DC
WT: 2.2 gm



ER181722DC
WT: 2.2 gm



ER181731DC
WT: 3.35 gm



ER181738DC
WT: 1.45 gm



ER181851DC
WT: 1.9 gm



ER181921DC
WT: 1.5 gm



ER181972DC
WT: 2.25 gm



ER181993DC
WT: 1.55 gm



ER182078DC
WT: 1.6 gm



ER182115DC
WT: 2.65 gm



ER1813733T
WT: 3.1 gm



ER1813742T
WT: 3.55 gm



JE100815DC
WT: 2.4 gm



ER1814322T
WT: 1.4 gm

Diamond Cut Earrings

Weight = Stone Wt. / Net Wt.



JE101459DC
WT: 1.29 gm



JE101575DC
WT: 2.45 gm



JE101669DC
WT: 1.9 gm



JE181165DC
WT: 4.8 gm



JE101668DC
WT: 2.6 gm



JE101537A18DC
WT: 0.09/4.61 gm



JE101537A182T
WT: 0.09/4.61 gm



JE101540DC
WT: 2.1 gm



JE101541DC
WT: 1.85 gm



JE101572DC
WT: 3.75 gm



JE101612A18DC
WT: 0.09/3.01 gm



JE101614A18DC
WT: 0.1/3.05 gm



JE101616A18DC
WT: 0.11/3.49 gm



JE101618A18DC
WT: 0.11/3.09 gm



JE101705DC
WT: 2.1 gm



JE101723DC
WT: 2.35 gm

Diamond Cut Earrings

Weight = Stone Wt. / Net Wt.



JE180067DC
WT: 1.15 gm



JE180069DC
WT: 3.3 gm



JE180391DC
WT: 2.45 gm



JE181132DC
WT: 3.5 gm



JE181133DC
WT: 5.2 gm



JE181135DC
WT: 4.9 gm



JE181164DC
WT: 3.95 gm



JE181166DC
WT: 2.8 gm



JE181182DC
WT: 1.6 gm



JE181183DC
WT: 1.6 gm



JE100405DC
WT: 7.35 gm



JE100412DC
WT: 3.80 gm



JE100653DC
WT: 5.1 gm



JE181314DC
WT: 2.5 gm



JE1014052T
WT: 4.95 gm



JE1014302T
WT: 3.4 gm

Diamond Cut Earrings

Weight = Stone Wt. / Net Wt.



JE1014362T
WT: 4.2 gm



JE1812812T
WT: 1.5 gm



AF18532T
WT: 1.75 gm



ER181540DC
WT: 6.85 gm



JE101947DC
WT: 1.55 gm



JE1019012T
WT: 2.05 gm



JE1321232T
WT: 4.25 gm



JE1321242T
WT: 4.3 gm



LZER1821642T
WT: 2.35 gm



LZER1821932T
WT: 2.2 gm



LZER1821943T
WT: 2.4 gm



ER1820133T
WT: 2.15 gm



JE101375DC
WT: 2.74 gm



JE181186DC
WT: 1.2 gm



JE180068DC
WT: 2.3 gm



JE1007502T
WT: 10.6 gm

Diamond Cut Earrings

Weight = Stone Wt. / Net Wt.



JE102092D4MMF
WT: 0.78 gm



JE102089D6MMF
WT: 1.18 gm



JE102089D8MMF
WT: 2 gm



JE102090D6MMF
WT: 1.26 gm



JE102091D6MMF
WT: 1.2 gm



JE102092D6MMF
WT: 1.18 gm



JE102093D6MMF
WT: 1.8 gm



JE102095D8MMF
WT: 1.87 gm



JE1020102T
WT: 1.85 gm



JE102097D6MMF
WT: 1.15 gm



JE1020082T
WT: 1.65 gm



JE1020092T
WT: 1.72 gm



JE1020112T
WT: 1.72 gm



JE1020413T
WT: 1.24 gm



JE1020483T
WT: 3.33 gm



ER181637S8MDC
WT: 1.95 gm

Diamond Cut Earrings

Weight = Stone Wt. / Net Wt.



JE1020493T
WT: 0.92 gm



JE1020513T
WT: 2 gm



JE1020523T
WT: 1.15 gm



JE1020543T
WT: 1.17 gm



JE1020553T
WT: 1.9 gm



JE1020573T
WT: 1.53 gm



JE1020583T
WT: 1.93 gm



JE1020593T
WT: 3.46 gm



ER181631S8M3T
WT: 2.05 gm



ER181632S8M3T
WT: 2 gm



ER181633S8M3T
WT: 1.95 gm



ER181634S8M3T
WT: 2 gm



ER181634S8M3T
WT: 2 gm



ER181636S8M3T
WT: 2.1 gm



1M318538MMLZ
WT: 2.35 gm



ER181624S8M3T
WT: 2.45 gm

Diamond Cut Earrings

Weight = Stone Wt. / Net Wt.



ER181627S8M3T
WT: 2.3 gm



ER181628S8M3T
WT: 2.35 gm



ER181625S8MDC
WT: 2.3 gm



ER181626S8M3T
WT: 2.35 gm



ER181629S8M3T
WT: 2.4 gm



ER181630S8M3T
WT: 2.35 gm



JE1020423T
WT: 2.1 gm



JE1020603T
WT: 2.4 gm



JE1020613T
WT: 2.4 gm



ER181999DC
WT: 3.3 gm



JE1016702T
WT: 1.7 gm



JE1020223T
WT: 1.7 gm



UJE102434MF
WT: 5.57 gm



UJE102435MF
WT: 5.42 gm



UJE1024222T



JE1020222T

Diamond Cut Earrings

Weight = Stone Wt. / Net Wt.



JE1020473T
WT: 3.85 gm



JE1028172T
WT: 2.4 gm



JE102906MF
WT: 3.2 gm



JE1020463T
WT: 1.52 gm



JE102230D30MA18DC
WT: 0.12/3.28 gm



JE104345D30MA18DC
WT: 0.18/3.5 gm



JE102818DC
WT: 1.87 gm



JE102819DC
WT: 2.15 gm



JE1020213T
WT: 3.7 gm



JE1020733T
WT: 3.8 gm



JE101552D32MMF
WT: 3.1 gm



JE102219D30MA18DC
WT: 0.15/3.65 gm



JE1007132T
WT: 2.5 gm



JE100802DC
WT: 1.9 gm



Diamond Cut Earrings

Weight = Stone Wt. / Net Wt.



JE102726DC
WT: 1.95 gm



JE102730DC
WT: 2.5 gm



JE102732DC
WT: 2.45 gm



JE102733DC
WT: 2.4 gm



JE102740DC
WT: 3.5 gm



JE102741DC
WT: 2.8 gm



JE102722DC
WT: 3 gm



JE102725DC
WT: 2.1 gm



JE1029093T
WT: 1.3 gm



JE1029103T
WT: 2.4 gm



JE1029113T
WT: 3.7 gm



JE1029123T
WT: 2 gm



ER1815212T
WT: 1.3 gm



ER1815222T
WT: 2.35 gm



ER1815232T
WT: 2.4 gm



ER182118DC
WT: 3.5 gm

Diamond Cut Earrings



ER182119DC
WT: 3.05 gm



JE101685DC
WT: 2.4 gm



JE101687DC
WT: 2.55 gm



JE101688DC
WT: 2.65 gm



JE101691DC
WT: 2.55 gm



JE101695DC
WT: 2.45 gm



JE101714DC
WT: 2.1 gm



JE101720DC
WT: 1.75 gm



JE102066DC
WT: 2.5 gm



JE102067DC
WT: 3.65 gm



JE102068DC
WT: 2.2 gm



JE102069DC
WT: 1.85 gm



JE102070DC
WT: 7.55 gm



JE102071DC
WT: 2.05 gm



JE102072DC
WT: 2 gm



JE101698DC
WT: 2.7 gm

*Diamond Cut
Earrings*

Weight = Stone Wt. / Net Wt.



ER1825832T
WT: 2.55 gm



LZER1826002T
WT: 2.5gm

Dior Studs

Weight = Stone Wt. / Net Wt.



JE180533SL
WT: 2.4 gm



JE180534SL
WT: 7.55 gm



JE180546SL
WT: 9.1 gm



JE180547SL
WT: 4.65 gm



JE180914SL
WT: 9 gm



JE180915SL
WT: 7.55 gm



JE180916SL
WT: 4.85 gm



JE181074SL
WT: 2.55 gm



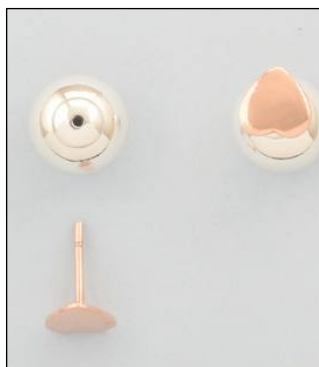
JE181075A18SL
WT: 6.85 gm



JE181092A182T
WT: 5.8 gm



JE181101A182T
WT: 5.3 gm



JE1809092T
WT: 4.7 gm



JE1809103T
WT: 4.2 gm



JE1809112T
WT: 5.1 gm



JE1809132T
WT: 4.35 gm



JE1809302T
WT: 5 gm

Dior Studs

Weight = Stone Wt. / Net Wt.



JE1809312T
WT: 5 gm



JE1809402T
WT: 4.65 gm



JE1810932T
WT: 5.5 gm



JE1812102T
WT: 8.65 gm



JME147022RH
WT: 4.6 gm



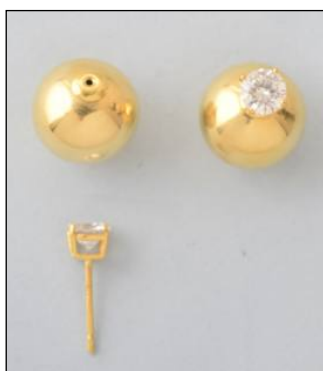
JME147022SL
WT: 4.6 gm



JE180784A18HMG
WT: 6.55 gm



JE180932A18FG
WT: 4.85 gm



JE181075A18FG
WT: 7.17 gm



JE1024993T
WT: 7.4 gm



JE1807852T
WT: 7.3 gm



JE1809152T
WT: 7.61 gm



JE1809162T
WT: 4.66 gm



JE1809172T
WT: 2.5 gm



JE1809392T
WT: 4.65 gm



JE1810742T
WT: 2.52 gm

Dior Studs

Weight = Stone Wt. / Net Wt.



JME147022FG
WT: 4.6 gm



JME1470233T
WT: 4.6 gm



JME1470242T
WT: 1.65 gm



JE1025002T
WT: 7.3 gm



JE1800012T
WT: 7.4 gm