

Textured Earrings



ER182929SL
WT: 2.4 gm



ER182930SL
WT: 2.3 gm



ER182931SL
WT: 2.4 gm



ER182932SL
WT: 2.9 gm



ER182934SL
WT: 2.95 gm



ER182935SL
WT: 2.85 gm



ER182936SL
WT: 2.35 gm



ER182937SL
WT: 2.3 gm



ER182933SL
WT: 2.9 gm



ER182938SL
WT: 3.6 gm

Threader Collection

Weight = Stone Wt. / Net Wt.



ER103059SL
WT: 1.5 gm



ER103060SL
WT: 1.05 gm



ER103063SL
WT: 1.2 gm



ER103064SL
WT: 1.4 gm



ER103066SL
WT: 1.6 gm



ER103067DC
WT: 1.5 gm



ER103068SL
WT: 1.4 gm



ER103069DC
WT: 1.45 gm



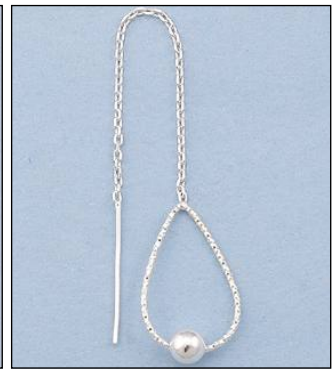
ER103070SL
WT: 1.8 gm



JE100438FG
WT: 1.75 gm



JE100438SL
WT: 1.74 gm



JE101763DC
WT: 1.5 gm



JE102666SL
WT: 2.63 gm



JE102997RH
WT: 0.7 gm



JE103018RH
WT: 1.75 gm



JE103019RH
WT: 1.55 gm

Threader Collection

Weight = Stone Wt. / Net Wt.



JE103020RH
WT: 1.1 gm



JE103021A18RH
WT: 0.36/1.39 gm



JME146289SL
WT: 0.55 gm



JME146290SL
WT: 0.5 gm



JME148020DC
WT: 1.2 gm



UER1030653T
WT: 1.85 gm



JE102774A2SL
WT: 0.62/1.4 gm



JE102776A15SL
WT: 1.25/1.1 gm



JE102778A7SL
WT: 1.09/1.11 gm



JE102779A3SL
WT: 0.84/0.88 gm



JE102782A29SL
WT: 1.1/1.1 gm



JE102782A30SL
WT: 1.08/1.18 gm



JE102789G15SL
WT: 0.29/1.1 gm



JE102815M1SL
WT: 0.12/1.13 gm



JE102814M1SL
WT: 0.08/0.97 gm



JE102827DC
WT: 1 gm