

Wire Earrings

Weight = Stone Wt. / Net Wt.



ER181347SL
WT: 3.85 gm



ER181348SL
WT: 2.6 gm



ER181349SL
WT: 3.35 gm



ER181350SL
WT: 1.95 gm



ER181351SL
WT: 2.25 gm



ER181352SL
WT: 2.75 gm



ER181353SL
WT: 2.65 gm



ER181480SL
WT: 1.3 gm



ER181482SL
WT: 1.35 gm



ER181578D45MSL
WT: 2.53 gm



ER103033QMG
WT: 1.85 gm



ER103034QMG
WT: 2.1 gm



ER181354QMG
WT: 12.35 gm



ER181381QMG
WT: 6.45 gm



ER181414D20MSL
WT: 2.3 gm



ER181415D30MSL
WT: 2.65 gm

Wire Earrings

Weight = Stone Wt. / Net Wt.



ER181417D30MSL
WT: 2.35 gm



ER181418D20MSL
WT: 2.2 gm



ER181419D20MSL
WT: 2.3 gm



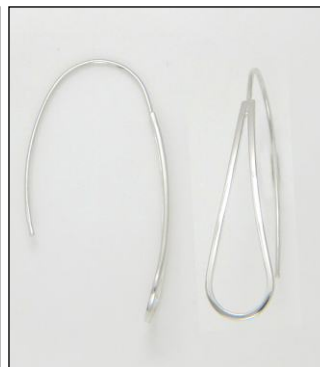
ER181420D18MSL
WT: 2.15 gm



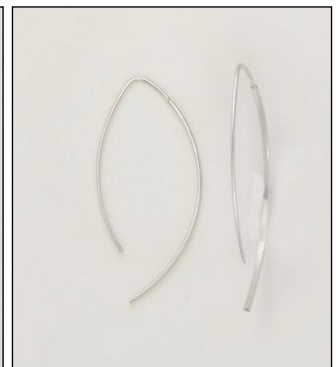
ER181421D18MSL
WT: 2.35 gm



ER181576SL
WT: 1.75 gm



ER181577SL
WT: 1.8 gm



ER181645SL
WT: 1.25 gm



ER181579SL
WT: 2.6 gm



ER181593QMG
WT: 5 gm



ER181593SL
WT: 5 gm



ER181619SL
WT: 1.45 gm



ER181620SL
WT: 1.6 gm



ER181621NPSL
WT: 0.56/1.04 gm



ER181622A18SL
WT: 0.08/1.02 gm



ER181623NPSL
WT: 0.34/1.16 gm

Wire Earrings

Weight = Stone Wt. / Net Wt.



ER181664SL
WT: 2.15 gm



ER181665SL
WT: 1.8 gm



ER181666A18SL
WT: 0.08/1.42 gm



ER181667A18SL
WT: 0.03/1.02 gm



ER181668A18SL
WT: 0.05/2.7 gm



ER181669G18SL
WT: 0.02/1.53 gm



ER181670SL
WT: 2.35 gm



ER181671SL
WT: 1.95 gm



ER181672SL
WT: 2.55 gm



ER181585SL
WT: 2.55 gm



ER181672SL
WT: 0.56/1.14 gm



ER181871SL
WT: 1.2 gm



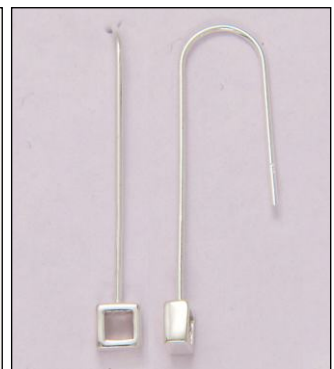
ER181872SL
WT: 1.5 gm



ER181873SL
WT: 1.8 gm



ER181874NPSL
WT: 0.56/0.84 gm



ER181878SL
WT: 1.85 gm

Wire Earrings

Weight = Stone Wt. / Net Wt.



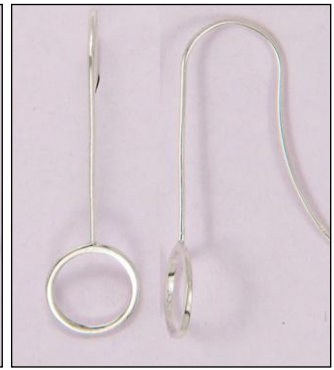
ER181879SL
WT: 1.75 gm



ER181880NPSL
WT: 0.34/2.26 gm



ER181881SL
WT: 1.8 gm



ER181882SL
WT: 1.6 gm



ER181883SL
WT: 1.6 gm



ER182117SL
WT: 2.2 gm



ER182150SL
WT: 2.4 gm



ER182151SL
WT: 1.8 gm



ER182152SL
WT: 2.3 gm



ER182117SL
WT: 2.2 gm



ER181646A18SL
WT: 0.08/1.02 gm



ER181647NPSL
WT: 0.35/0.6 gm



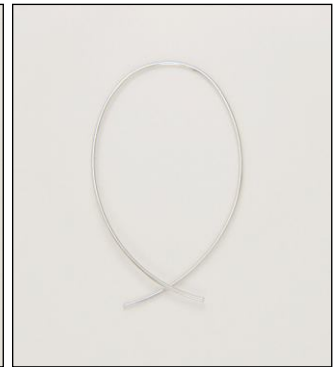
ER181649SL
WT: 1.3 gm



ER181650NPSL
WT: 0.35/0.95 gm



ER181651SL
WT: 3 gm



ER181652SL
WT: 1.2 gm

Wire Earrings

Weight = Stone Wt. / Net Wt.



ER181648SL
WT: 1.4 gm



ER181884SL
WT: 1.5 gm



ER181885SL
WT: 1.65 gm



ER181886SL
WT: 2.15 gm



ER181887NPSL
WT: 0.34/2.41 gm



ER181915SL
WT: 1.45 gm



ER182010SL
WT: 4.4 gm



ER182015SL
WT: 1.75 gm



ER182016NPSL
WT: 0.56/0.84 gm



ER182017NPSL
WT: 0.56/0.84 gm



ER182018SL
WT: 2.2 gm



ER182019SL
WT: 2.1 gm



ER182033SL
WT: 1.25 gm



ER182068NPSL
WT: 0.34/3.66 gm



ER182085TX
WT: 2.5 gm



ER182086TX
WT: 3.15 gm

Wire Earrings



ER182208SL
WT: 1.1 gm



ER182198SL
WT: 2.6 gm



ER182199SL
WT: 2.7 gm



ER182206SL
WT: 1.55 gm



ER182318SL
WT: 2.6 gm



ER181645SL
WT: 1.2 gm



ER181646A18SL
WT: 0.08/1.02 gm



ER181648SL
WT: 1.4 gm



JE180990RH
WT: 1.45 gm



JE180991RH
WT: 1.65 gm



ER181623NPSL
WT: 1.5 gm



JE180026SL
WT: 0.9 gm



JE180027SL
WT: 0.8 gm



ER181622A18SL
WT: 0.08/1.02 gm



AF18532T
WT: 1.5 gm

Wire Earrings

Weight = Stone Wt. / Net Wt.



ER182372SL
WT: 3.45 gm



ER182223SL
WT: 3.1 gm



ER182209SL
WT: 1.45 gm



ER182199FG
WT: 2.7 gm



ER182354SL
WT: 1.7 gm



ER182355SL
WT: 1.4 gm



ER182356SL
WT: 2.75 gm



ER182358SL
WT: 3.4 gm



ER182201SL
WT: 01.9gm



ER182203SL
WT: 1.55 gm



ER182209SL
WT: 1.1 gm



EP132337RH
WT: 1.15 gm



ER182685SL
WT: 1.95 gm



ER182686SL
WT: 2.35 gm



ER103136NPSL
WT: 0.34/1.21 gm



ER1826312T
WT: 2.6 gm

Wire Earrings

Weight = Stone Wt. / Net Wt.



UER182621NPSL
WT: 0.4/2.6 gm



UER1826222T
WT: 2.9 gm



ER182646NPSL
WT: 1.15 gm



ER182861NPDC
WT: 2.67gm



ER182614SL
WT: 2.15 gm



ER1828432T
WT: 2.10 gm



EP132338RH
WT: 1.25 gm



EP132339RH
WT: 1.6 gm



EP1323412T
WT: 1.2 gm



EP1323443T
WT: 1.4 gm



EP1323463T
WT: 1.5 gm



EP1323472T
WT: 1.15 gm



EP1323492T
WT: 1.45 gm



EP1323512T
WT: 1.4 gm



EP1323542T
WT: 1.55 gm



EP1323552T
WT: 1.15 gm

Wire Earrings

Weight = Stone Wt. / Net Wt.



ER182087TX
WT: 2.25 gm



ER182142TX
WT: 3.9 gm



ER182143TX
WT: 4.2 gm



ER182144TX
WT: 2.45 gm



ER1815212T
WT: 1.3 gm



ER1815222T
WT: 2.35 gm



ER1815232T
WT: 2.4 gm



ER182118DC
WT: 3.5 gm



ER182119DC
WT: 3.05 gm



JE101685DC
WT: 2.4 gm



JE101687DC
WT: 2.55 gm



JE101688DC
WT: 2.65 gm



JE101691DC
WT: 2.55 gm



JE101695DC
WT: 2.45 gm



JE101696SL
WT: 2.65 gm



JE101697DC
WT: 2.75 gm

Wire Earrings

Weight = Stone Wt. / Net Wt.



JE101698DC
WT: 2.7 gm



JE101699DC
WT: 2.55 gm



JE101714DC
WT: 2.1 gm



JE101720DC
WT: 1.75 gm



JE102066DC
WT: 2.5 gm



JE102067DC
WT: 3.65 gm



JE102068DC
WT: 2.2 gm



JE102069DC
WT: 1.85 gm



JE102070DC
WT: 7.55 gm



JE102071DC
WT: 2.05 gm



JE102072DC
WT: 2 gm



JE102192SL
WT: 2.9 gm



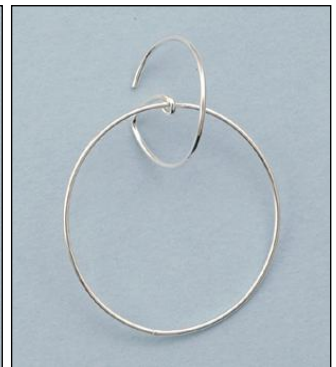
JE102326SL
WT: 2.5 gm



JE102414SL
WT: 2.56 gm



JE102415SL
WT: 2.28 gm



JE102416SL
WT: 3.03 gm

Wire Earrings

Weight = Stone Wt. / Net Wt.



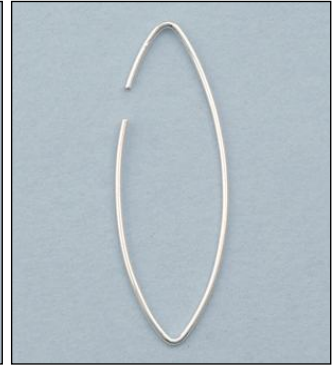
JE102417SL
WT: 1.27 gm



JE102418SL
WT: 1.38 gm



JE102419SL
WT: 1.54 gm



JE102429SL
WT: 1.54 gm



JE102430SL
WT: 2.02 gm



JE102431SL
WT: 2 gm



JE181000RH
WT: 1.55 gm



JE181001D30MRH
WT: 1.5 gm



JE181003RH
WT: 1.6 gm



JE181004RH
WT: 2.8 gm



JE181005D40MRH
WT: 2.95 gm



JE102420SL
WT: 2.1 gm



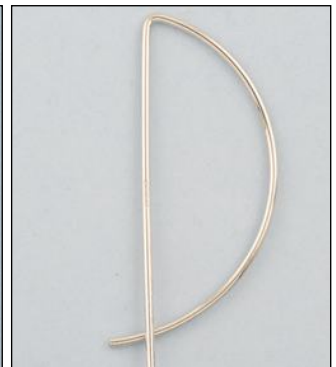
JE102421SL
WT: 1.38 gm



JE102424SL
WT: 1.9 gm



JE102425SL
WT: 1.8 gm



JE181000RH
WT: 1.55 gm