

Mother & Child Pendant

Weight = Stone Wt. / Net Wt.



PD160846DC
WT: 1.15 gm



PD160847DC
WT: 1.1 gm



PD160848SL
WT: 1.1 gm



PD160849SL
WT: 1.1 gm



PD1608522T
WT: 1.9 gm



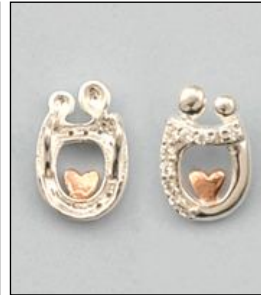
PD1608532T
WT: 2.1 gm



PD1609922T
WT: 1.7 gm



PD160851DC
WT: 1.15 gm



JP126010A182T
WT: 0.06/1.49 gm



JP126083A18RH
WT: 0.01/0.78 gm



JP126084A18RH
WT: 0.06/1.34 gm



JP126085A18RH
WT: 0.05/1.05 gm



JP126086A18RH
WT: 0.04/1.56 gm



JP125460SL
WT: 0.76 gm



JP125458SL
WT: 0.8 gm



JP125897A18SL
WT: 0.02/1.63 gm



JP126091A18DC
WT: 0.01/1.34 gm



JP126088A183T
WT: 0.07/1.38 gm



JP160225DC
WT: 1.1 gm



JP160232RH
WT: 1.85 gm



JP160233RH
WT: 0.8 gm



JP160248RH
WT: 2.7 gm



JP1600712T
WT: 1.55 gm



JP1601802T
WT: 2.35 gm



JP1602042T
WT: 1.85 gm

Mother & Child Pendant

Weight = Stone Wt. / Net Wt.



JP125342SL
WT: 3.15 gm



JP125463A182T
WT: 0.02/1.43 gm



JP125907A18SL
WT: 0.03/1.6 gm



JP126002A18RH
WT: 0.11/1.74 gm



JP126087A182T
WT: 0.03/1.37 gm



JP126088A18RH
WT: 0.07/1.38 gm



JP126098A18MF
WT: 0.02/1.48 gm



JP126127A18RH
WT: 0.09/1.61 gm



JP126128A18RH
WT: 0.05/1.1 gm



JP126138M1RH
WT: 0.14/1.76 gm



JP126082A18RH
WT: 0.03/1.27 gm



JP126140A182T
WT: 0.07/1.28 gm



JP126234G18FG
WT: 1.42 gm



JP160001DC
WT: 0.98 gm



JP160177FG
WT: 0.93 gm



JP160176FG
WT: 1.8 gm



JP126139A182T
WT: 0.07/1.38 gm



JP160056AT
WT: 1.58 gm



JP160023SL
WT: 1.6 gm



JP125322SL
WT: 1.75 gm



JP160068SL
WT: 3.1 gm



PD190307SL
WT: 1.65 gm



PD190308SL
WT: 2.2 gm