

Diamond Cut Charms

Weight = Stone Wt. / Net Wt.



CH1704892T
WT: 0.3 gm



CH1704902T
WT: 0.45 gm



CH1704912T
WT: 0.35 gm



CH1704922T
WT: 0.4 gm



CH1704932T
WT: 0.45 gm



CH1704942T
WT: 0.4 gm



CH1704952T
WT: 0.4 gm



CH1704962T
WT: 0.5 gm



CH1704972T
WT: 0.3 gm



CH1704982T
WT: 0.3 gm



CH1704992T
WT: 0.4 gm



CH1705002T
WT: 0.35 gm



CH1705012T
WT: 0.55 gm



CH1705022T
WT: 0.5 gm



CH1705032T
WT: 0.45 gm



CH1705042T
WT: 0.4 gm



CH1705052T
WT: 0.5 gm



CH1705062T
WT: 0.45 gm



CH1705072T
WT: 0.4 gm



CH1705082T
WT: 0.4 gm



CH1705092T
WT: 0.4 gm



CH1705102T
WT: 0.4 gm



CH1705112T
WT: 0.5 gm



CH1705122T
WT: 0.4 gm



CH1705132T
WT: 0.35 gm

Diamond Cut Charms

Weight = Stone Wt. / Net Wt.



CH1705142T
WT: 0.45 gm



CH170582DC
WT: 0.9 gm



JCH128306DC
WT: 0.75 gm



JCH128228DC
WT: 0.56 gm



JCH128882DC
WT: 1.89 gm



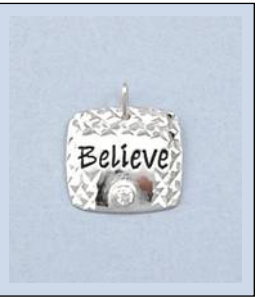
JCH170155DC
WT: 0.4 gm



CH170737DC
WT: 0.9 gm



CH170738DC
WT: 0.55 gm



JCH128867A183T
WT: 0.02/1.68 gm



JCH128868A383T
WT: 0.02/2.05 gm



CH170735DC
WT: 0.55 gm



JCH128139DC
WT: 0.51 gm



CH170736DC
WT: 0.9 gm



CH170583DC
WT: 0.95 gm



JCH128136DC
WT: 0.36 gm



JCH128221DC
WT: 0.44 gm



CH1703233T
WT: 0.7 gm



JCH128553DC
WT: 0.73 gm



JCH128229DC
WT: 0.41 gm



JCH128303DC
WT: 0.63 gm



JCH128518DC
WT: 1 gm



JCH128215DC
WT: 0.46 gm



CH170585DC
WT: 0.95 gm

PAUL GLOBAL VENTURES
Quality starts with you

PAUL GLOBAL VENTURES
Quality starts with you

Dog Tags



CH170725SL
WT: 1 gm



JCH170372RH
WT: 0.85 gm



JCH170375RH
WT: 0.77 gm

Dog Tags



JP125319SL
WT: 8 gm



JP125324SL
WT: 12.5 gm



JP125375SL
WT: 5.5 gm



JP125376SL
WT: 6.8 gm



JP125378SL
WT: 4 gm



JP125399SL
WT: 4.91 gm



JP160078SL
WT: 2.25 gm



JP160206SL
WT: 5.85 gm



JP160207SL
WT: 5.35 gm



JP160254SL
WT: 6.6 gm



JP160408SL
WT: 5.1 gm



JP160409SL
WT: 5.1 gm



JP1243022T
WT: 3.26 gm



PD160802SL
WT: 6.1 gm



PD160803SL
WT: 6.35 gm



PD160974FG
WT: 1.25 gm



PD160974RG
WT: 1.2 gm



PD160974RH
WT: 2 gm