

# Butterflies



JMC147749SL  
WT: 0.4 gm



JCH170235SL  
WT: 0.58 gm



JCH128182SL  
WT: 1.12 gm



JCH128306DC  
WT: 0.75 gm



JCH128183AT  
WT: 1.05 gm



JCH128194EN  
WT: 0.82 gm



JCH128195EN  
WT: 1.28 gm



JCH128196EN  
WT: 1.24 gm



JCH128202SL  
WT: 1.9 gm



JCH128247EN  
WT: 1.5 gm



JCH128962A18SL  
WT: 0.02/1.3 gm



JCH170087A18SL  
WT: 0.06/1.09 gm



JCH1281862T  
WT: 1.06 gm



JCH1281872T  
WT: 0.80 gm



JMC140966EN  
WT: 0.34 gm



CH170484EN  
WT: 1.05 gm



CH170689SL  
WT: 0.07 gm



CH170771AT  
WT: 0.95 gm



JCH128958SL  
WT: 1.18 gm



JCH128960A18SL  
WT: 0.04/1.16 gm



JCH128930A18SL  
WT: 0.03/2.45 gm



JCH128930SL  
WT: 2.2 gm



JCH128957SL  
WT: 1.8 gm

# Butterflies

Weight = Stone Wt. / Net Wt.



JP125115SL  
WT: 2.9 gm



JP125900A18SL  
WT: 0.02/1.43 gm



JP124565DC  
WT: 1.57 gm



JP124567DC  
WT: 1.33 gm



JP126000A18SL  
WT: 0.02/1.73 gm



JP125369SL  
WT: 2 gm



JP125374SL  
WT: 1.3 gm



JP125935A18SL  
WT: 0.06/1.84 gm



JP132081SL  
WT: 1.23 gm



JP160188AT  
WT: 0.82 gm



JP1254813T  
WT: 1.05 gm



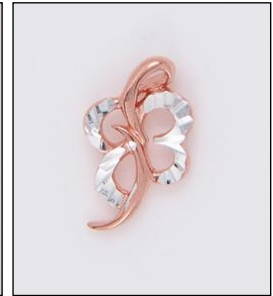
JP1600572T  
WT: 1.4 gm



LZJP125969A182T  
WT: 0.13/1.42 gm



PD190106DC  
WT: 1.05 gm



PD1608623T  
WT: 1.1 gm



JP160347SL  
WT: 1.22 gm



PD126354A18SL  
WT: 0.04/0.71 gm



JP124563DC  
WT: 1.8 gm



PD1902832T  
WT: 1 gm



JP125475SL  
WT: 1.43 gm



PD190046DC  
WT: 1.15 gm



PD190331DC  
WT: 1.6 gm



PD190559DC  
WT: 1.55 gm



PD126381G18SL  
WT: 0.01/1.44 gm



PD190652AT  
WT: 1.3 gm

# Butterflies

Weight = Stone Wt. / Net Wt.



PD190756SL  
WT: 0.85 gm



PD1903742T  
WT: 1.35 gm



PD1905792T  
WT: 1.25 gm



PD1903092T  
WT: 1.15 gm



PD1903832T  
WT: 1.55 gm