

Breakapart Pendant

Weight = Stone Wt. / Net Wt.



PD160844AT
WT: 2.45 gm



PD160777AT
WT: 2 gm



PD160775AT
WT: 2.25 gm



PD160776AT
WT: 2.55 gm



JP124777RH
WT: 2.55 gm



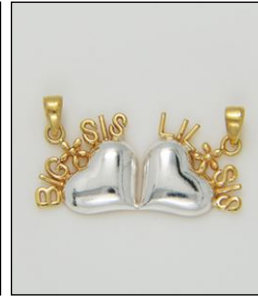
PD160745DC
WT: 2.5 gm



PD160876AT
WT: 4.25 gm



PD160886AT
WT: 3.45 gm



PD1607552T
WT: 3.45 gm



PD1607632T
WT: 3.4 gm



PD1900092T
WT: 1.85 gm



PD126412G18AT
WT: 0.01/1.74 gm



PD190410SL
WT: 1.85 gm



PD190542AT
WT: 3.15 gm



PD190585AT
WT: 3.75 gm