

Electroforming Bangles

Weight = Stone Wt. / Metal Wt.



SLBN110789D64MAT
WT: 12 gm



SLBN110790D65MAT
WT: 9.95 gm



SLBN110791D63MAT
WT: 9.15 gm



SLBN110792D60MAT
WT: 12.35 gm



SLBN110793D63MAT
WT: 12 gm



SLBN110794D65MAT
WT: 12.25 gm

Electroforming Bangles

Weight = Stone Wt. / Metal Wt.



SLBN110795D63MAT
WT: 11.95 gm



SLBG110839AT
WT: 18.25 gm



SLBG110897D50X56MS
WT: 15 gm



SLBG110898D50X56AT
WT: 11.85 gm



SLBG110895D50X60MS
WT: 15.35 gm



SLBG110896D47X57MS
WT: 12.9 gm

Electroforming Bangles

Weight = Stone Wt. / Metal Wt.



SLBG110900D54X64MS
WT: 13.25 gm



SLBG110912D46X57AT
WT: 13.5 gm



SLBG110901D49X57AT
WT: 12.71 gm



SLBG110903D54X65MS
WT: 14.7 gm



SLBG110904D48X58AT
WT: 15.9 gm



SLBG110905D46X57AT
WT: 15.5 gm

Electroforming Bangles

Weight = Stone Wt. / Metal Wt.



SLBG110906D50X57MS
WT: 12.8 gm



SLBG110910D52X57AT
WT: 12.05 gm



SLBG110911D46X59AT
WT: 10.09 gm



SLBG110913D46X57AT
WT: 10.2 gm



SLBG110914D52X58AT
WT: 12.05 gm



SLBG110915D49X56AT
WT: 10.2 gm

Electroforming Bangles

Weight = Stone Wt. / Metal Wt.



SLBG110899D48X57MS
WT: 11.95 gm



SLBG110909D54X64MS
WT: 13.2 gm



SLBG110917D48X57AT
WT: 10.9 gm



SLBG110918D47X56AT
WT: 9.6 gm



SLBG110919D50X60AT
WT: 7 gm



SLBG110927D60MA18S
WT: 0.1/9.45 gm

Electroforming Bangles

Weight = Stone Wt. / Metal Wt.



SLBG110928AT
WT: 14.65 gm



SLBG110929AT
WT: 13.45 gm



SLBG110926D62MA18S
WT: 0.39/9.61 gm



SLBG110930D64A18AT
WT: 24.7 gm

Electroforming Bracelets

Weight = Stone Wt. / Metal Wt.



SLBR107052S8IAT
WT: 11.3 gm



SLBR107053S8ISL
WT: 11.65 gm



SLBR107054S8IAT
WT: 12.2 gm



SLBR107055S8IAT
WT: 12.1 gm



SLBR107056S8IAT
WT: 10.7 gm



SLBR107048S7QIAT
WT: 21.4 gm

*Electroforming
Bracelets*

Weight = Stone Wt. / Metal Wt.



SLBR107124S7HISL
WT: 14.2 gm

Electroforming Pendant

Weight = Stone Wt. / Metal Wt.



SLP160478AT
WT: 1.2 gm



SLP160479AT
WT: 2.8 gm



SLP160480AT
WT: 2.45 gm



SLP160498SL
WT: 1.8 gm



SLP160482AT
WT: 1.6 gm



SLP160483AT
WT: 2.1 gm



SLP160476AT
WT: 5.8 gm



SLP160477AT
WT: 5.8 gm



SLP160489AT
WT: 1.5 gm



SLP160490AT
WT: 1.93 gm



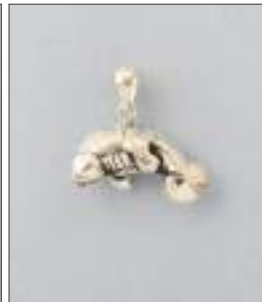
SLP160491AT
WT: 1.05 gm



SLP160492AT
WT: 3.7 gm



SLP160494AT
WT: 3.4 gm



SLP160495AT
WT: 0.85 gm



SLP160497SL
WT: 1.8 gm



SLP160499AT
WT: 1.25 gm



SLPD132285AT
WT: 3.15 gm



SLPD132286AT
WT: 2.5 gm



SLP160544AT
WT: 2.4 gm



SLP160545AT
WT: 2.45 gm



SLP160546AT
WT: 2.2 gm



SLP160547AT
WT: 2.25 gm



SLP160548AT
WT: 2.05 gm



SLP160549AT
WT: 1.55 gm



SLP160550AT
WT: 1.75 gm

Electroforming Pendant

Weight = Stone Wt. / Metal Wt.



SLP160553AT
WT: 4.5 gm



SLP160554AT
WT: 3.8 gm



SLP181227AT
WT: 2.46 gm



SLP181230AT
WT: 1.7 gm



NPSLP160496AT
WT: 1.15 gm



SLP160551FG
WT: 1.8 gm



SLP160552FG
WT: 2.95 gm



SLP181217AT
WT: 2.82 gm



SLP181222AT
WT: 1.95 gm



SLP181233AT
WT: 2.68 gm



SLPD1606592T
WT: 1.75 gm



SLPD160684AT
WT: 1.55 gm



SLPD160685AT
WT: 1.85 gm



SLPD160686AT
WT: 1.28 gm



SLPD160687AT
WT: 1.7 gm



SLPD160688AT
WT: 2.2 gm



SLPD160689AT
WT: 2.1 gm



SLPD160690AT
WT: 1.55 gm



SLPD160691AT
WT: 2.65 gm



SLPD160692AT
WT: 2.2 gm



SLPD160693AT
WT: 1.7 gm



SLPD160694AT
WT: 1.05 gm



SLPD160695AT
WT: 1.15 gm



SLPD160696AT
WT: 1 gm



SLPD160697AT
WT: 1.15 gm

Electroforming Pendant

Weight = Stone Wt. / Metal Wt.



SLP160562AT



SLPD160660AT
WT: 1.9 gm



SLPD160662AT
WT: 1.85 gm



SLPD160671AT
WT: 2.05 gm



SLPD160672AT
WT: 1.2 gm



SLPD160673AT
WT: 1.6 gm



SLPD126344A18SL
WT: 0.11/2.49 gm



SLPD160904AT
WT: 1.7 gm



SLPD160905AT
WT: 1.85 gm



SLPD160670AT
WT: 1.5 gm



SLPD160921AT
WT: 1.55 gm



SLPD160699AT
WT: 1.75 gm



SLPD160700AT
WT: 3 gm



SLPD160701AT
WT: 3.6 gm



SLPD160774AT
WT: 10.65 gm



SLPD160742AT
WT: 2.25 gm



SLPD160770AT
WT: 5.8 gm



SLPD1607052T
WT: 1.8 gm



SLPD1607062T
WT: 3.05 gm



SLPD160716AT
WT: 0.8 gm



SLPD132281AT
WT: 2.65 gm



SLPD160711AT
WT: 1.95 gm



SLPD132282AT
WT: 2.5 gm



SLPD160714AT
WT: 1.5 gm



SLPD160669AT
WT: 1.65 gm

Electroforming Pendant

Weight = Stone Wt. / Metal Wt.



SLPD160713AT
WT: 3.6 gm



SLPD132284AT
WT: 2.95 gm



SLPD160723SL
WT: 3.65 gm



SLPD160724SL
WT: 4.4 gm



SLPD132286AT
WT: 2.5 gm



SLPD160717AT
WT: 7.75 gm



SLPD160722AT
WT: 4.4 gm



SLPD132283AT
WT: 1.35 gm



SLPD160712AT
WT: 1.45 gm



SLPD160715AT
WT: 1.8 gm



SLPD160718AT
WT: 5.35 gm



SLPD160725AT
WT: 4.2 gm



SLPD160720AT
WT: 4.8 gm



SLPD160721AT
WT: 3.3 gm



SLPD132284AT
WT: 2.95 gm



SLPD160769AT
WT: 3.4 gm



SLPD132288G2AT
WT: 0.6/2 gm



SLPD160740AT
WT: 2.9 gm



SLPD160741AT
WT: 3.4 gm



SLPD160768AT
WT: 2.8 gm



SLPD160866SL
WT: 1.2 gm



SLPD160902AT
WT: 1.35 gm



SLPD160863SL
WT: 1.1 gm



SLPD160864SL
WT: 1.1 gm



SLPD160865SL
WT: 1.25 gm

Electroforming Pendant

Weight = Stone Wt. / Metal Wt.



SLPD160912SB
WT: 1.1 gm



SLPD160912SK
WT: 1.05 gm



SLPD160703EN
WT: 1.65 gm



SLPD1607042T
WT: 2.1 gm



SLPD160702EN
WT: 1.9 gm



SLPD132298G18SL
WT: 0.02/1.68 gm



SLPD132300G18SL
WT: 2.05 gm



SLPD190045AT
WT: 4 gm



SLP160481AT
WT: 2.4 gm



NPSLP160493AT
WT: 1.35 gm



SLPD160661AT
WT: 2.15 gm



SLPD160664AT
WT: 1.95 gm



SLPD160901AT
WT: 1.55 gm



SLPD160929AT
WT: 1.4 gm



SLPD160933AT
WT: 1.35 gm



SLPD160698AT
WT: 1.85 gm



SLPD160916AT
WT: 1.3 gm



SLPD160919AT
WT: 1.15 gm



SLPD160920AT
WT: 1.8 gm



SLPD160922AT
WT: 1.7 gm



SLPD190359AT
WT: 1.3 gm



SLPD190363AT
WT: 2.1 gm



SLPD190364AT
WT: 2.55 gm



SLPD190366AT
WT: 2.1 gm



SLPD190367AT
WT: 2.45 gm

Electroforming Pendant

Weight = Stone Wt. / Metal Wt.



SLPD181223SL
WT: 2.65 gm



SLPD181240DC
WT: 1.65 gm



SLPD181477SL
WT: 2.25 gm



SLPD181808SL
WT: 2.45 gm



SLPD190330AT
WT: 2.5 gm



SLPD190362AT
WT: 1.65 gm



SLPD190365AT
WT: 1.2 gm



SLPD190396AT
WT: 1.6 gm



SLPD190378SL
WT: 2.7 gm



SLPD190375SL
WT: 1.7 gm



SLPD190359AT
WT: 1.3 gm



SLPD190362AT
WT: 1.65 gm



SLPD190363AT
WT: 2.1 gm



SLPD190364AT
WT: 2.55 gm



SLPD190365AT
WT: 1.2 gm



SLPD190366AT
WT: 2.1 gm



SLPD190367AT
WT: 2.45 gm



SLPD190376SL
WT: 1.25 gm



SLPD190379SL
WT: 1.2 gm



SLPD190380SL
WT: 3.6 gm



SLPD126389G18AT
WT: 1.55 gm



SLPD126407G18SL
WT: 1.2 gm



SLPD190402AT
WT: 4.7 gm



SLPD190404AT
WT: 1.45 gm

Electroforming Pendant

Weight = Stone Wt. / Metal Wt.



SLPD190405AT
WT: 1.6 gm



SLPD190397AT
WT: 3.6 gm



SLPD126404G18AT
WT: 2.25 gm



SLPD126385G18AT
WT: 1.65 gm



SLPD126386G18SL
WT: 1.25 gm



SLPD126406G18AT
WT: 1.55 gm



SLPD126408G18SL
WT: 1.8 gm



SLPD126409G18SL
WT: 2.05 gm



SLPD126387G18AT
WT: 2.15 gm



SLPD126402G18SL
WT: 1.1 gm



SLPD126403G18SL
WT: 2.2 gm



SLPD190403SL
WT: 1.7 gm



SLPD190406AT
WT: 2.05 gm



SLPD126405G18AT
WT: 2.3 gm



SLPD190413AT
WT: 1.55 gm



SLPD190414AT
WT: 2.3 gm



SLPD190415AT
WT: 3.4 gm



SLPD126413G18SL
WT: 0.03/1.52 gm



SLPD126414AT
WT: 0.02/1.48 gm



SLPD126415G18AT
WT: 1.9 gm



SLPD126416G18AT
WT: 0.02/1.03 gm



SLPD126417G18AT
WT: 1.35 gm



SLPD126419G18AT
WT: 0.02/1.33 gm



SLPD126420G18SL
WT: 0.03/1.32 gm



SLPD126422G18SB
WT: 0.02/2.03 gm

Electroforming Pendant

Weight = Stone Wt. / Metal Wt.



SLPD126422G18SL
WT: 2.05 gm



SLPD190437AT
WT: 2.55 gm



SLPD126386G18SB
Wt: 1.4 gm



SLPD126425G18AT
Wt: 2.7 gm



SLPD126429G18AT
Wt: 1.5 gm



SLPD190497AT
WT: 2.3 gm



SLPD126430G18AT
Wt: 1.3 gm



SLPD126430G18SB
Wt: 1.3 gm



SLPD126431G18AT
Wt: 1.4 gm



SLPD126431G18SB
Wt: 1.4 gm



SLPD190381AT
WT: 2.4 gm



SLPD190496AT
WT: 1.6 gm



SLPD190598AT
Wt: 2.1 gm



SLPD126428G18AT
Wt: 1.5 gm



SLPD126428G18SB
Wt: 1.5 gm



SLPD190377SL
WT: 2.55 gm



SLPD190595AT
WT: 2.9 gm



SLPD160720AT
WT: 4.8 gm



SLPD190594SL
WT: 7.55 gm

Electroforming Pendant

Weight = Stone Wt. / Metal Wt.



SLPD190213AT
WT: 5.45 gm



SLPD190210AT
WT: 9.9 gm



SLPD190211AT
WT: 9.95 gm



SLPD190212AT
WT: 6.45 gm



SLPD190209AT
WT: 7.45 gm

Electroforming Earrings

Weight = Stone Wt. / Metal Wt.



SLE181217AT
WT: 2.55 gm



SLE181218AT
WT: 6.6 gm



SLE181219AT
WT: 2.85 gm



SLE181220AT
WT: 2.7 gm



SLE181221AT
WT: 2.95 gm



SLE181222AT
WT: 2.05 gm



SLE181227AT
WT: 1.6 gm



SLE181228AT
WT: 1.48 gm



SLE181229AT
WT: 1.55 gm



SLE181230AT
WT: 1.45 gm



SLE181231AT
WT: 1.25 gm



SLE181232AT
WT: 1.65 gm



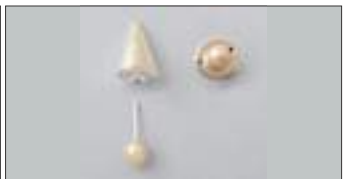
SLE181233AT
WT: 1.7 gm



SLE181236AT
WT: 2.3 gm



NPSLE181252NPSL
WT: 0.74/5.36 gm



SLE181253NPSL
WT: 4.25 gm



SLER181395AT
WT: 1.25 gm



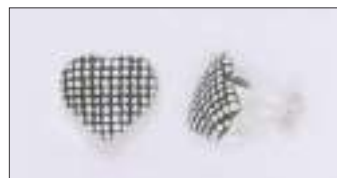
SLER181396AT
WT: 1.6 gm



SLER181397AT
WT: 1.4 gm



SLER181398AT
WT: 1.3 gm



SLER181402AT
WT: 1.7 gm



SLER181403AT
WT: 1.5 gm



SLER181494AT
WT: 1.75 gm



SLER181485AT
WT: 2 gm



SLER181487AT
WT: 1.95 gm



SLER181488AT
WT: 1.7 gm



SLER181489AT
WT: 2.1 gm



SLER181491AT
WT: 1.9 gm

Electroforming Earrings

Weight = Stone Wt. / Metal Wt.



SLER181494AT
WT: 2.8 gm



SLER181496AT
WT: 2.1 gm



SLER181495AT
WT: 2.2 gm



SLER181497AT
WT: 2 gm



SLER181498AT
WT: 1.75 gm



SLER181481SL
WT: 0.9 gm



SLE181254A18SL
WT: 3.2 gm



SLER181747AT
WT: 2.45 gm



SLER181748AT
WT: 2.9 gm



SLER181756AT
WT: 3.05 gm



SLER181751SL
WT: 2.25 gm



SLER181757AT
WT: 2.25 gm



SLER181760A18SL
WT: 0.09/1.61 gm



SLER181762AT
WT: 1.75 gm



SLER181763AT
WT: 1.8 gm



SLER181764AT
WT: 1.5 gm



SLER181807S12MSL
WT: 4.1 gm



SLER181807S10MSL
WT: 1.85 gm



SLER181816S10MSL
WT: 2.2 gm



SLER181819S8MSL
WT: 0.9 gm



SLER181819S10MSL
WT: 1.4 gm



SLER181822SL
WT: 2.85 gm



SLER181816S10MSL
WT: 2.2 gm



SLER181818S8MSL
WT: 1.1 gm



SLER181828SL
WT: 1.6 gm



SLER181809SL
WT: 1.45 gm



SLER181810SL
WT: 1.6 gm



SLER181811SL
WT: 1.65 gm

Electroforming Earrings

Weight = Stone Wt. / Metal Wt.



SLER181751SL
WT: 2.25 gm



SLER181759A18SL
WT: 4 gm



SLER181760A18SL
WT: 1.7 gm



SLER181817SL
WT: 1.5 gm



SLER181904S10MAT
WT: 2.7 gm



SLER181902S8MAT
WT: 1.85 gm



SLER181902S10MAT
WT: 3.5 gm



SLER181903S10MAT
WT: 2.7 gm



SLER182328AT
WT: 2.35 gm



SLER182329AT
WT: 2.4 gm



SLER182330AT
WT: 1.75 gm



SLER182331AT
WT: 1.6 gm



SLER182332AT
WT: 1.95 gm



SLER182333AT
WT: 2.1 gm



SLER182334AT
WT: 1.7 gm



SLER182335AT
WT: 1.7 gm



SLER182336AT
WT: 1.4 gm



SLER182337AT
WT: 2.5 gm



SLER182338AT
WT: 1.9 gm



SLER182340S8MAT
WT: 1.15 gm



SLER182340S10MAT
WT: 2.3 gm



SLER182341S8MAT
WT: 1.2 gm



SLER182341S10MAT
WT: 2.45 gm



SLER182342S8MAT
WT: 1.3 gm



SLER182342S10MAT
WT: 2.55 gm



SLER182343S8MAT
WT: 1.35 gm



SLER182343S10MAT
WT: 2.7 gm



SLER182344S8MAT
WT: 1.25 gm

Electroforming Earrings

Weight = Stone Wt. / Metal Wt.



SLER182344S10MAT
WT: 2.65 gm



SLER182345S8MAT
WT: 1.5 gm



SLER182345S10MAT
WT: 2.6 gm



SLER182346S8MAT
WT: 1.2 gm



SLER182346S10MAT
WT: 2.55 gm



SLER182347S8MAT
WT: 1.2 gm



SLER182347S10MAT
WT: 2.5 gm



SLER182348S8MAT
WT: 1.4 gm



SLER182348S10MAT
WT: 2.85 gm



SLER182412AT
WT: 1.55 gm



SLER182440AT
WT: 1.25 gm



SLER182441AT
WT: 2.35 gm



SLER182462AT
WT: 2.1 gm



SLER182454AT
WT: 1.85 gm

Electroforming Earrings

Weight = Stone Wt. / Metal Wt.



SLE181223SL
WT: 3.9 gm



SLE181224SL
WT: 6.85 gm



SLE181225SL
WT: 3 gm



SLE181226AT
WT: 5.6 gm



SLE181237AT
WT: 3.35 gm



SLE181240DC
WT: 2.4 gm



SLE181241DC
WT: 4.28 gm



NPSLE181246SL
WT: 2.35 gm



SLE181343AT
WT: 3.25 gm



SLE181344AT
WT: 3.65 gm



SLE181345AT
WT: 3.9 gm



SLER181478AT
WT: 2.55 gm



SLER181479AT
WT: 2.2 gm



SLER181490AT
WT: 2.65 gm



SLER181470AT
WT: 2.95 gm



SLER181457AT
WT: 2.55 gm



SLER181460AT
WT: 2.55 gm



SLER181461AT
WT: 2.3 gm



SLER181462AT
WT: 2.25 gm



SLER181463AT
WT: 2.75 gm



SLER181486AT
WT: 2.5 gm



SLER181459AT
WT: 2.6 gm



SLER181492AT
WT: 2.32 gm



SLER181493AT
WT: 2.38 gm



SLER181458AT
WT: 4.45 gm

Electroforming Earrings

Weight = Stone Wt. / Metal Wt.



SLER181464SL
WT: 3.95 gm



SLER181465SL
WT: 4.4 gm



SLER181477SL
WT: 3.8 gm



SLER181476SL
WT: 5.7 gm



SLER181616AT
WT: 2.95 gm



SLEP132281AT
WT: 2.6 gm



SLEP132282AT
WT: 2.5 gm



SLER132283AT
WT: 2.05 gm



SLER181548AT
WT: 1.8 gm



SLER181549AT
WT: 2.05 gm



SLER181551AT
WT: 0 gm



SLER181557AT
WT: 2.5 gm



SLER181558AT
WT: 7 gm



SLER181559AT
WT: 3 gm



SLER181562AT
WT: 2.9 gm



SLER181563AT
WT: 3.1 gm



SLER181564AT
WT: 2.3 gm



SLER181565AT
WT: 4.95 gm



SLER181566AT
WT: 2.8 gm



SLER181568AT
WT: 3.8 gm



SLEP132288AT
WT: 3.4 gm



SLER181609AT
WT: 1.65 gm



SLER181610AT
WT: 2 gm



SLER181611AT
WT: 3.08 gm



SLER181613AT
WT: 2.8 gm

Electroforming Earrings

Weight = Stone Wt. / Metal Wt.



SLER181929G18SL
WT: 0.08/1.52 gm



SLER181930G18SL
WT: 0.03/1.72 gm



SLEP132298G18SL
WT: 0.02/2.68 gm



SLER181928G18SL
WT: 3 gm



SLER181926G18AT
WT: 0.02/2.68 gm



SLER181617AT
WT: 2.95 gm



SLER18158AT
WT: 3.9 gm



SLEP132288G2AT
WT: 1.2/4.45 gm



SLER181749AT
WT: 4.9 gm



SLER181755SL
WT: 2.8 gm



SLER181758AT
WT: 2.15 gm



SLER181759A18SL
WT: 0.25/3.75 gm



SLER181761A18SL
WT: 0.18/4.42 gm



SLER181812SL
WT: 2.6 gm



SLER181766AT
WT: 3.75 gm



SLER181781AT
WT: 2.55 gm



SLER181782AT
WT: 2.85 gm



SLER181783AT
WT: 3.75 gm



SLER181784AT
WT: 4.3 gm



SLER181785AT
WT: 3.05 gm



SLER181786AT
WT: 4.55 gm



SLER181787AT
WT: 3.25 gm



SLER181788AT
WT: 3.8 gm



SLER181789AT
WT: 3.4 gm



SLER181765AT
WT: 1.65 gm

Electroforming Earrings

Weight = Stone Wt. / Metal Wt.



SLER181808SL
WT: 3.35 gm



SLMER149200AT
WT: 5.35 gm



SLEP132290AT
WT: 3.75 gm



SLER181808SL
WT: 3.35 gm



SLER181925G18SL
WT: 0.02/2.98 gm



SLER181927G18AT
WT: 0.01/2.19 gm



SLER182350G18SL
WT: 0.02/1.68 gm



SLER182353G18SL
WT: 0.02/2.38 gm



SLER182363G18AT
WT: 0.04/2.26 gm



SLER182312AT
WT: 4.35 gm



SLER182313AT
WT: 3.35 gm



SLER182314AT
WT: 4.75 gm



SLER182317AT
WT: 6.45 gm



SLER182349AT
WT: 5.2 gm



SLER182368G18AT
WT: 0.03/2.27 gm



SLER182402G18SB
WT: 0.03/2.47 gm



SLER182402G18SL
WT: 0.03/2.47 gm



SLER182420AT
WT: 4.3 gm



SLER182421AT
WT: 3.25 gm



SLER182422AT
WT: 3.7 gm



SLER182455AT
WT: 1.9 gm



SLER182417SL
WT: 3.3 gm



SLER182435AT
WT: 4.95 gm



SLER182436AT
WT: 5.75 gm



SLER182437AT
WT: 4.50 gm

Electroforming Earrings

Weight = Stone Wt. / Metal Wt.



SLER182438AT
WT: 3.45 gm



SLER182413AT
WT: 3.7 gm



SLER182414AT
WT: 2.55 gm



SLER182456AT
WT: 5 gm



SLER182457AT
WT: 2.85 gm



SLER182423AT
WT: 5.9 gm

Electroforming Hoops

Weight = Stone Wt. / Metal Wt.



SLE104599SL
WT: 5.3 gm



SLE104600SL
WT: 5.75 gm



SLE104601SL
WT: 3.7 gm



SLE104602SL
WT: 3.85 gm



SLE104603SL
WT: 5.9 gm



SLE104604SL
WT: 5 gm



SLE104605SL
WT: 5.25 gm



SLE104606SL
WT: 4.65 gm



SLE104674SL
WT: 9.75 gm



SLE104682SL
WT: 4.4 gm



SLE104678AT
WT: 5.05 gm



SLE104679AT
WT: 4.50 gm



SLE104680AT
WT: 6.2 gm



SLE104681AT
WT: 4.65 gm



SLE104675AT
WT: 4.56 gm



SLE104676AT
WT: 4.55 gm



SLE104677AT
WT: 4.3 gm



SLHP104721AT
WT: 5.45 gm



SLHP104722AT
WT: 3.85 gm



SLHP104726AT
WT: 6.1 gm



SLHP104718AT
WT: 2.75 gm



SLHP104719AT
WT: 3.2 gm



SLHP104723AT
WT: 4.7 gm



SLHP104724AT
WT: 4.6 gm



SLHP104725AT
WT: 4.1 gm

Electroforming Hoops

Weight = Stone Wt. / Metal Wt.



SLHP104779AT
WT: 3.48 gm



SLHP104780AT
WT: 5 gm



SLHP104781AT
WT: 6.4 gm



SLHP104782AT
WT: 8.08 gm



SLHP104783AT
WT: 5.05 gm



SLHP104784AT
WT: 3 gm



SLHP104788AT
WT: 7.95 gm



SLHP104785SL
WT: 4.15 gm



SLHP104729AT
WT: 5.85 gm



SLHP104730G18SL
WT: 3.1 gm



SLHP104776AT
WT: 8 gm



SLHP104775AT
WT: 4.65 gm



SLHP104774AT
WT: 6.55 gm



SLHP104743AT
WT: 3.75 gm



SLHP104756AT
WT: 4.7 gm



SLHP104755AT
WT: 5.05 gm



SLHP104744AT
WT: 7.3 gm



SLHP104748D25MAT
WT: 7.75 gm



SLHP104757AT
WT: 7.75 gm



SLHP104758AT
WT: 5.85 gm



SLHP104749D25MAT
WT: 4.55 gm



SLHP104750D30MAT
WT: 10.3 gm



SLHP104751D30MAT
WT: 8.3 gm



SLER104740AT
WT: 4.9 gm



SLER104741AT
WT: 5.25 gm

Electroforming Hoops

Weight = Stone Wt. / Metal Wt.



SLHP104874SL
WT: 2.15 gm



SLHP104888SL
WT: 3.05 gm



SLHP104872SL
WT: 2.15 gm



SLHP104875SL
WT: 2.35 gm



SLHP104873SL
WT: 4.1 gm



SLHP104877SL
WT: 3 gm



SLHP104871SL
WT: 3.25 gm



SLHP104889SL
WT: 3.95 gm



SLHP104891SL
WT: 6.85 gm



SLHP104879G18RH
WT: 7.3 gm



SLHP104852A18SL
WT: 8.55 gm



SLHP104864D24MG18R
WT: 3.7 gm



SLHP104881D25MSL
WT: 5.5 gm



SLHP104880D25MSL
WT: 6.4 gm



SLHP104838AT
WT: 3.8 gm



SLHP104855D25MAT
WT: 5.65 gm



SLHP104856D24MAT
WT: 5.25 gm



SLHP104857D25MAT
WT: 6.65 gm



SLHP104865D31MAT
WT: 7.9 gm



SLHP104869D31MAT
WT: 8.05 gm



SLHP104866D30MAT
WT: 7.75 gm



SLHP104867D31MAT
WT: 7.75 gm



SLHP104868D31MAT
WT: 8.1 gm



SLHP104870D30MAT
WT: 7 gm



SLHP104878D30MAT
WT: 8.9 gm

Electroforming Hoops

Weight = Stone Wt. / Metal Wt.



SLER104739D29MAT
WT: 7.6 gm



SLHP104727AT
WT: 4.7 gm



SLHP104728AT
WT: 7 gm



SLE104604DC
WT: 5 gm



SLE181102G18SL
WT: 3.05 gm



SLHP104800AT
WT: 6.2 gm



SLHP104808AT
WT: 5.5 gm



SLHP104809AT
WT: 4.2 gm



SLHP104805AT
WT: 5.9 gm



SLHP104800AT
WT: 6.2 gm



SLHP104806AT
WT: 4.45 gm



SLER181614AT
WT: 5.3 gm



SLHP104810AT
WT: 6.9 gm



SLHP104807AT
WT: 2.85 gm



SLHP104757AT
WT: 3.4 gm



SLHP104976AT
WT: 2.5 gm



SLHP104977SL
WT: 3.5 gm



SLHP104978AT
WT: 4.45 gm



SLHP104979AT
WT: 4.85 gm



SLHP104854AT
WT: 7.4 gm



SLHP104853A18SL
WT: 4.9 gm



SLHP104882SL
WT: 3.05 gm



SLHP104883SL
WT: 2.2 gm



SLHP104876SL
WT: 3.75 gm



SLHP104884SL
WT: 3.15 gm

Electroforming Hoops

Weight = Stone Wt. / Metal Wt.



SLHP104939SL
WT: 4.2 gm



SLHP104940SL
WT: 4.7 gm



SLHP104941SL
WT: 3 gm



SLHP104942SL
WT: 3.55 gm



SLHP104943SL
WT: 3.65 gm



SLHP104922SL
WT: 3.75 gm



SLHP104944AT
WT: 2.75 gm



SLHP104781SL
WT: 6.4 gm



SLHP104924SL
WT: 5.4 gm



SLHP104927AT
WT: 4.2 gm



SLHP104852A18SL
WT: 0.3/8.25 gm



SLHP104891SL
WT: 7 gm



SLHP104910SL
WT: 4.35 gm



SLHP104926AT
WT: 4.7 gm



SLHP104931SL
WT: 4 gm



SLHP104932SL
WT: 4.2 gm



SLHP104933SL
WT: 5 gm



SLHP104934SL
WT: 4.45 gm



SLHP104937SL
WT: 2.2 gm



SLHP104938SL
WT: 3.95 gm



SLHP104935SL
WT: 4.15 gm



SLHP104936SL
WT: 3.55 gm



SLHP104870D30MAT
WT: 7 gm



SLHP104878D30MAT
WT: 8.9 gm



SLMHP149166AT
WT: 5.76 gm

Electroforming Hoops

Weight = Stone Wt. / Metal Wt.



SLHP105021SL
WT: 2.8 gm



SLHP105022SL
WT: 2.6 gm



SLHP105024SL
WT: 3.4 gm



SLHP105025SL
WT: 4.15 gm



SLHP105029SL
WT: 2.65 gm



SLHP105026SL
WT: 4.8 gm



SLHP105027SL
WT: 3.6 gm



SLHP105028SL
WT: 2.4 gm



SLHP105032AT
WT: 2.45 gm



SLHP104999AT
WT: 4.3 gm



SLHP105041AT
WT: 7.25 gm



SLHP105042AT
WT: 3.7 gm



SLHP105043G18AT
WT: 3.6 gm



SLHP105052AT
WT: 6.25 gm



SLHP105038AT
WT: 4.7 gm



SLHP105053AT
WT: 8 gm



SLHP105054AT
WT: 5.7 gm



SLHP105055AT
WT: 10.35 gm



SLHP105056AT
WT: 5.45 gm



SLHP105057AT
WT: 6.25 gm



SLHP105039AT
WT: 7 gm



SLHP105040AT
WT: 4.4 gm



SLHP104928AT
WT: 3.55 gm



SLHP104929AT
WT: 4.85 gm



SLHP104930AT
WT: 5.8 gm

Electroforming Hoops

Weight = Stone Wt. / Metal Wt.



SLHP104988AT
WT: 3 gm



SLHP104987AT
WT: 3.7 gm



SLHP104981D40MAT
WT: 7.2 gm



SLHP104981D50MAT
WT: 9.9 gm



SLHP104980D50MAT
WT: 10.5 gm



SLHP104983AT
WT: 3.75 gm



SLHP104982D25MAT
WT: 3.35 gm



SLER181456AT
WT: 1.6 gm



NPSLE181247SL
WT: 4.85 gm



SLE181234SL
WT: 3.75 gm



SLE181216AT
WT: 3.45 gm



SLE181096SL
WT: 3.7 gm



SLHP104837AT
WT: 4.5 gm



SLE181238AT
WT: 4.8 gm

Electroforming Finger Rings

Weight = Stone Wt. / Metal Wt.



SLFR112980S9NAT
WT: 3.85 gm



SLFR112981S9NAT
WT: 5.5 gm



SLFR112982S9NAT
WT: 5.7 gm



SLFR112983S10NAT
WT: 6.9 gm



SLFR112984S7NAT
WT: 3.75 gm



SLFR112985S6NAT
WT: 4.3 gm



SLFR112986S6NAT
WT: 2.6 gm



SLFR112987S7NAT
WT: 4.85 gm



SLFR112988S6NAT
WT: 4.65 gm



SLFR112989S6NAT
WT: 5 gm



SLFR112990S9NSL
WT: 5.5 gm



SLFR112999S6NAT
WT: 4.3 gm



SLFR112991S5NAT
WT: 3.85 gm



SLFR112992S5NAT
WT: 3.85 gm



SLFR112993S6NAT
WT: 5.5 gm



SLFR112994S6NAT
WT: 3.8 gm



SLFR112995S8NAT
WT: 4 gm



SLFR112996S6NAT
WT: 2.7 gm



SLFR112997S6NAT
WT: 4.3 gm



SLFR112998S6NAT
WT: 4.3 gm



SLFR113000S7NAT
WT: 3 gm



SLFR112980S6NAT
WT: 3.35 gm



SLFR113001S6NAT
WT: 1.85 gm



SLFR113002S5NAT
WT: 4.85 gm



SLFR113008S7NAT
WT: 7.25 gm

Electroforming Finger Rings

Weight = Stone Wt. / Metal Wt.



SLFR113011S7HNDC
WT: 2.35 gm



SLFR113012S7HNDC
WT: 2.4 gm



SLFR113013S7HNSL
WT: 2.1 gm



SLFR113014S7HNSL
WT: 1.9 gm



SLFR113097S7NAT
WT: 5.35 gm



SLFR113098S9NAT
WT: 6.05 gm



SLFR113099S7NAT
WT: 4.35 gm



SLFR113100S7NAT
WT: 5.25 gm



SLFR113090S9NSL
WT: 4.2 gm



SLFR113091S9NSL
WT: 4.94 gm



SLFR113092S10NSL
WT: 4.96 gm

Electroforming Bracelets

Weight = Stone Wt. / Metal Wt.



SLBR107052S8IAT
WT: 11.3 gm



SLBR107053S8ISL
WT: 11.65 gm



SLBR107054S8IAT
WT: 12.2 gm



SLBR107055S8IAT
WT: 12.1 gm



SLBR107056S8IAT
WT: 10.7 gm



SLBR107048S7QIAT
WT: 21.4 gm

*Electroforming
Bracelets*

Weight = Stone Wt. / Metal Wt.



SLBR107124S7HISL
WT: 14.2 gm

Electroforming Bangles

Weight = Stone Wt. / Metal Wt.



SLBN110789D64MAT
WT: 12 gm



SLBN110790D65MAT
WT: 9.95 gm



SLBN110791D63MAT
WT: 9.15 gm



SLBN110792D60MAT
WT: 12.35 gm



SLBN110793D63MAT
WT: 12 gm



SLBN110794D65MAT
WT: 12.25 gm

Electroforming Bangles

Weight = Stone Wt. / Metal Wt.



SLBN110795D63MAT
WT: 11.95 gm



SLBG110839AT
WT: 18.25 gm



SLBG110897D50X56MS
WT: 15 gm



SLBG110898D50X56AT
WT: 11.85 gm



SLBG110895D50X60MS
WT: 15.35 gm



SLBG110896D47X57MS
WT: 12.9 gm

Electroforming Bangles

Weight = Stone Wt. / Metal Wt.



SLBG110900D54X64MS
WT: 13.25 gm



SLBG110912D46X57AT
WT: 13.5 gm



SLBG110901D49X57AT
WT: 12.71 gm



SLBG110903D54X65MS
WT: 14.7 gm



SLBG110904D48X58AT
WT: 15.9 gm



SLBG110905D46X57AT
WT: 15.5 gm

Electroforming Bangles

Weight = Stone Wt. / Metal Wt.



SLBG110906D50X57MS
WT: 12.8 gm



SLBG110910D52X57AT
WT: 12.05 gm



SLBG110911D46X59AT
WT: 10.09 gm



SLBG110913D46X57AT
WT: 10.2 gm



SLBG110914D52X58AT
WT: 12.05 gm



SLBG110915D49X56AT
WT: 10.2 gm

Electroforming Bangles

Weight = Stone Wt. / Metal Wt.



SLBG110899D48X57MS
WT: 11.95 gm



SLBG110909D54X64MS
WT: 13.2 gm



SLBG110917D48X57AT
WT: 10.9 gm



SLBG110918D47X56AT
WT: 9.6 gm



SLBG110919D50X60AT
WT: 7 gm



SLBG110927D60MA18S
WT: 0.1/9.45 gm

Electroforming Bangles

Weight = Stone Wt. / Metal Wt.



SLBG110792D60MDC
WT: 12.75 gm



SLBG110895D50X60DC
WT: 9.85 gm



SLBG110906D50X57DC
WT: 12.15 gm



SLBG110909D54X64DC
WT: 12.85 gm



SLBG110917D48X57DC
WT: 10.65 gm



SLBG110918D47X56DC
WT: 9.45 gm

Electroforming Bangles

Weight = Stone Wt. / Metal Wt.



SLBG110928AT
WT: 14.65 gm



SLBG110929AT
WT: 13.45 gm



SLBG110926D62MA18S
WT: 0.39/9.61 gm



SLBG110930D64A18AT
WT: 24.7 gm



SLBG111032AT
WT: 14.4 gm

*Electroforming
Necklace*

Weight = Stone Wt. / Metal Wt.



SLNK122761S18IAT
WT: 3.35 gm

Electroforming Collection

Weight = Stone Wt. / Metal Wt.



SLCB205280AT
WT: 0.75 gm



SLCB205281AT
WT: 0.6 gm



SLCB205282AT
WT: 1.35 gm



SLCB205283AT
WT: 0.9 gm



SLCB205284AT
WT: 0.55 gm



SLCB205285AT
WT: 1.05 gm



SLCB205286AT
WT: 1.45 gm



SLCB205287AT
WT: 1.95 gm



SLCB205288AT
WT: 1.1 gm



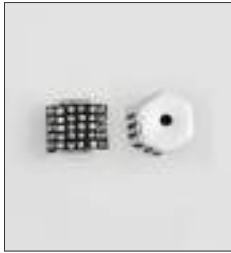
SLCB205289AT
WT: 1.6 gm



SLCB205290AT
WT: 1.45 gm



SLCB205291AT
WT: 0 gm



SLCB205292AT
WT: 1.6 gm



SLCB205293AT
WT: 0.95 gm



SLCB205294AT
WT: 0.8 gm

Electroforming Earrings

Weight = Stone Wt. / Metal Wt.



SLE181217AT
WT: 2.55 gm



SLE181218AT
WT: 6.6 gm



SLE181219AT
WT: 2.85 gm



SLE181220AT
WT: 2.7 gm



SLE181221AT
WT: 2.95 gm



SLE181222AT
WT: 2.05 gm



SLE181227AT
WT: 1.6 gm



SLE181228AT
WT: 1.48 gm



SLE181229AT
WT: 1.55 gm



SLE181230AT
WT: 1.45 gm



SLE181231AT
WT: 1.25 gm



SLE181232AT
WT: 1.65 gm



SLE181233AT
WT: 1.7 gm



SLE181236AT
WT: 2.3 gm



NPSLE181252NPSL
WT: 0.74/5.36 gm



SLE181253NPSL
WT: 4.25 gm



SLER181395AT
WT: 1.25 gm



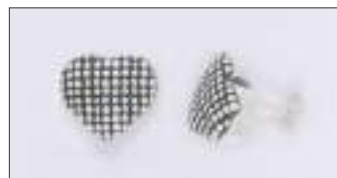
SLER181396AT
WT: 1.6 gm



SLER181397AT
WT: 1.4 gm



SLER181398AT
WT: 1.3 gm



SLER181402AT
WT: 1.7 gm



SLER181403AT
WT: 1.5 gm



SLER181494AT
WT: 1.75 gm



SLER181485AT
WT: 2 gm



SLER181487AT
WT: 1.95 gm



SLER181488AT
WT: 1.7 gm



SLER181489AT
WT: 2.1 gm



SLER181491AT
WT: 1.9 gm

Electroforming Earrings

Weight = Stone Wt. / Metal Wt.



SLER181494AT
WT: 2.8 gm



SLER181496AT
WT: 2.1 gm



SLER181495AT
WT: 2.2 gm



SLER181497AT
WT: 2 gm



SLER181498AT
WT: 1.75 gm



SLER181481SL
WT: 0.9 gm



SLE181254A18SL
WT: 3.2 gm



SLER181747AT
WT: 2.45 gm



SLER181748AT
WT: 2.9 gm



SLER181756AT
WT: 3.05 gm



SLER181751SL
WT: 2.25 gm



SLER181757AT
WT: 2.25 gm



SLER181760A18SL
WT: 0.09/1.61 gm



SLER181762AT
WT: 1.75 gm



SLER181763AT
WT: 1.8 gm



SLER181764AT
WT: 1.5 gm



SLER181807S12MSL
WT: 4.1 gm



SLER181807S10MSL
WT: 1.85 gm



SLER181816S10MSL
WT: 2.2 gm



SLER181819S8MSL
WT: 0.9 gm



SLER181819S10MSL
WT: 1.4 gm



SLER181822SL
WT: 2.85 gm



SLER181816S10MSL
WT: 2.2 gm



SLER181818S8MSL
WT: 1.1 gm



SLER181828SL
WT: 1.6 gm



SLER181809SL
WT: 1.45 gm



SLER181810SL
WT: 1.6 gm



SLER181811SL
WT: 1.65 gm

Electroforming Earrings

Weight = Stone Wt. / Metal Wt.



SLER181751SL
WT: 2.25 gm



SLER181759A18SL
WT: 4 gm



SLER181760A18SL
WT: 1.7 gm



SLER181817SL
WT: 1.5 gm



SLER181904S10MAT
WT: 2.7 gm



SLER181902S8MAT
WT: 1.85 gm



SLER181902S10MAT
WT: 3.5 gm



SLER181903S10MAT
WT: 2.7 gm



SLER182328AT
WT: 2.35 gm



SLER182329AT
WT: 2.4 gm



SLER182330AT
WT: 1.75 gm



SLER182331AT
WT: 1.6 gm



SLER182332AT
WT: 1.95 gm



SLER182333AT
WT: 2.1 gm



SLER182334AT
WT: 1.7 gm



SLER182335AT
WT: 1.7 gm



SLER182336AT
WT: 1.4 gm



SLER182337AT
WT: 2.5 gm



SLER182338AT
WT: 1.9 gm



SLER182340S8MAT
WT: 1.15 gm



SLER182340S10MAT
WT: 2.3 gm



SLER182341S8MAT
WT: 1.2 gm



SLER182341S10MAT
WT: 2.45 gm



SLER182342S8MAT
WT: 1.3 gm



SLER182342S10MAT
WT: 2.55 gm



SLER182343S8MAT
WT: 1.35 gm



SLER182343S10MAT
WT: 2.7 gm



SLER182344S8MAT
WT: 1.25 gm

Electroforming Earrings

Weight = Stone Wt. / Metal Wt.



SLER182344S10MAT
WT: 2.65 gm



SLER182345S8MAT
WT: 1.5 gm



SLER182345S10MAT
WT: 2.6 gm



SLER182346S8MAT
WT: 1.2 gm



SLER182346S10MAT
WT: 2.55 gm



SLER182347S8MAT
WT: 1.2 gm



SLER182347S10MAT
WT: 2.5 gm



SLER182348S8MAT
WT: 1.4 gm



SLER182348S10MAT
WT: 2.85 gm



SLER182412AT
WT: 1.55 gm



SLER182440AT
WT: 1.25 gm



SLER182441AT
WT: 2.35 gm



SLER182462AT
WT: 2.1 gm



SLER182454AT
WT: 1.85 gm



SLER182813AT
WT: 2.82 gm



SLER182814AT
WT: 1.43 gm



SLER182841AT
WT: 3.28 gm

Electroforming Earrings

Weight = Stone Wt. / Metal Wt.



SLE181223SL
WT: 3.9 gm



SLE181224SL
WT: 6.85 gm



SLE181225SL
WT: 3 gm



SLE181226AT
WT: 5.6 gm



SLE181237AT
WT: 3.35 gm



SLE181240DC
WT: 2.4 gm



SLE181241DC
WT: 4.28 gm



NPSLE181246SL
WT: 2.35 gm



SLE181343AT
WT: 3.25 gm



SLE181344AT
WT: 3.65 gm



SLE181345AT
WT: 3.9 gm



SLER181478AT
WT: 2.55 gm



SLER181479AT
WT: 2.2 gm



SLER181490AT
WT: 2.65 gm



SLER181470AT
WT: 2.95 gm



SLER181457AT
WT: 2.55 gm



SLER181460AT
WT: 2.55 gm



SLER181461AT
WT: 2.3 gm



SLER181462AT
WT: 2.25 gm



SLER181463AT
WT: 2.75 gm



SLER181486AT
WT: 2.5 gm



SLER181459AT
WT: 2.6 gm



SLER181492AT
WT: 2.32 gm



SLER181493AT
WT: 2.38 gm



SLER181458AT
WT: 4.45 gm

Electroforming Earrings

Weight = Stone Wt. / Metal Wt.



SLER181464SL
WT: 3.95 gm



SLER181465SL
WT: 4.4 gm



SLER181477SL
WT: 3.8 gm



SLER181476SL
WT: 5.7 gm



SLER181616AT
WT: 2.95 gm



SLEP132281AT
WT: 2.6 gm



SLEP132282AT
WT: 2.5 gm



SLER132283AT
WT: 2.05 gm



SLER181548AT
WT: 1.8 gm



SLER181549AT
WT: 2.05 gm



SLER181551AT
WT: 0 gm



SLER181557AT
WT: 2.5 gm



SLER181558AT
WT: 7 gm



SLER181559AT
WT: 3 gm



SLER181562AT
WT: 2.9 gm



SLER181563AT
WT: 3.1 gm



SLER181564AT
WT: 2.3 gm



SLER181565AT
WT: 4.95 gm



SLER181566AT
WT: 2.8 gm



SLER181568AT
WT: 3.8 gm



SLEP132288AT
WT: 3.4 gm



SLER181609AT
WT: 1.65 gm



SLER181610AT
WT: 2 gm



SLER181611AT
WT: 3.08 gm



SLER181613AT
WT: 2.8 gm

Electroforming Earrings

Weight = Stone Wt. / Metal Wt.



SLER181929G18SL
WT: 0.08/1.52 gm



SLER181930G18SL
WT: 0.03/1.72 gm



SLEP132298G18SL
WT: 0.02/2.68 gm



SLER181928G18SL
WT: 3 gm



SLER181926G18AT
WT: 0.02/2.68 gm



SLER181617AT
WT: 2.95 gm



SLER18158AT
WT: 3.9 gm



SLEP132288G2AT
WT: 1.2/4.45 gm



SLER181749AT
WT: 4.9 gm



SLER181755SL
WT: 2.8 gm



SLER181758AT
WT: 2.15 gm



SLER181759A18SL
WT: 0.25/3.75 gm



SLER181761A18SL
WT: 0.18/4.42 gm



SLER181812SL
WT: 2.6 gm



SLER181766AT
WT: 3.75 gm



SLER181781AT
WT: 2.55 gm



SLER181782AT
WT: 2.85 gm



SLER181783AT
WT: 3.75 gm



SLER181784AT
WT: 4.3 gm



SLER181785AT
WT: 3.05 gm



SLER181786AT
WT: 4.55 gm



SLER181787AT
WT: 3.25 gm



SLER181788AT
WT: 3.8 gm



SLER181789AT
WT: 3.4 gm



SLER181765AT
WT: 1.65 gm

Electroforming Earrings

Weight = Stone Wt. / Metal Wt.



SLER181808SL
WT: 3.35 gm



SLMER149200AT
WT: 5.35 gm



SLEP132290AT
WT: 3.75 gm



SLER181808SL
WT: 3.35 gm



SLER181925G18SL
WT: 0.02/2.98 gm



SLER181927G18AT
WT: 0.01/2.19 gm



SLER182350G18SL
WT: 0.02/1.68 gm



SLER182353G18SL
WT: 0.02/2.38 gm



SLER182363G18AT
WT: 0.04/2.26 gm



SLER182312AT
WT: 4.35 gm



SLER182313AT
WT: 3.35 gm



SLER182314AT
WT: 4.75 gm



SLER182317AT
WT: 6.45 gm



SLER182349AT
WT: 5.2 gm



SLER182368G18AT
WT: 0.03/2.27 gm



SLER182402G18SB
WT: 0.03/2.47 gm



SLER182402G18SL
WT: 0.03/2.47 gm



SLER182831AT
WT: 1.51 gm



SLER182839AT
WT: 5.18 gm



SLER182422AT
WT: 3.7 gm



SLER182455AT
WT: 1.9 gm



SLER182417SL
WT: 3.3 gm



SLER182420AT
WT: 4.3 gm



SLER182421AT
WT: 3.25 gm



SLER182437AT
WT: 4.50 gm

Electroforming Earrings

Weight = Stone Wt. / Metal Wt.



SLER182438AT
WT: 3.45 gm



SLER182413AT
WT: 3.7 gm



SLER182414AT
WT: 2.55 gm



SLER182456AT
WT: 5 gm



SLER182457AT
WT: 2.85 gm



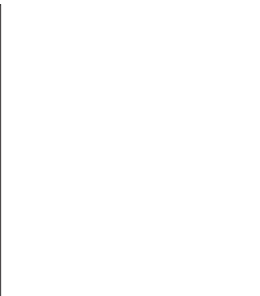
SLER182423AT
WT: 5.9 gm



SLER182435AT
WT: 4.95 gm



SLER182436AT
WT: 5.75 gm



Electroforming Finger Rings

Weight = Stone Wt. / Metal Wt.



SLFR112980S9NAT
WT: 3.85 gm



SLFR112981S9NAT
WT: 5.5 gm



SLFR112982S9NAT
WT: 5.7 gm



SLFR112983S10NAT
WT: 6.9 gm



SLFR112984S7NAT
WT: 3.75 gm



SLFR112985S6NAT
WT: 4.3 gm



SLFR112986S6NAT
WT: 2.6 gm



SLFR112987S7NAT
WT: 4.85 gm



SLFR112988S6NAT
WT: 4.65 gm



SLFR112989S6NAT
WT: 5 gm



SLFR112990S9NSL
WT: 5.5 gm



SLFR112999S6NAT
WT: 4.3 gm



SLFR112991S5NAT
WT: 3.85 gm



SLFR112992S5NAT
WT: 3.85 gm



SLFR112993S6NAT
WT: 5.5 gm



SLFR112994S6NAT
WT: 3.8 gm



SLFR112995S8NAT
WT: 4 gm



SLFR112996S6NAT
WT: 2.7 gm



SLFR112997S6NAT
WT: 4.3 gm



SLFR112998S6NAT
WT: 4.3 gm



SLFR113000S7NAT
WT: 3 gm



SLFR112980S6NAT
WT: 3.35 gm



SLFR113001S6NAT
WT: 1.85 gm



SLFR113002S5NAT
WT: 4.85 gm



SLFR113008S7NAT
WT: 7.25 gm

Electroforming Finger Rings

Weight = Stone Wt. / Metal Wt.



SLFR113011S7HNDC
WT: 2.35 gm



SLFR113012S7HNDC
WT: 2.4 gm



SLFR113013S7HNSL
WT: 2.1 gm



SLFR113014S7HNSL
WT: 1.9 gm

Electroforming Hoops

Weight = Stone Wt. / Metal Wt.



SLE104599SL
WT: 5.3 gm



SLE104600SL
WT: 5.75 gm



SLE104601SL
WT: 3.7 gm



SLE104602SL
WT: 3.85 gm



SLE104603SL
WT: 5.9 gm



SLE104604SL
WT: 5 gm



SLE104605SL
WT: 5.25 gm



SLE104606SL
WT: 4.65 gm



SLE104674SL
WT: 9.75 gm



SLE104682SL
WT: 4.4 gm



SLE104678AT
WT: 5.05 gm



SLE104679AT
WT: 4.50 gm



SLE104680AT
WT: 6.2 gm



SLE104681AT
WT: 4.65 gm



SLE104675AT
WT: 4.56 gm



SLE104676AT
WT: 4.55 gm



SLE104677AT
WT: 4.3 gm



SLHP104721AT
WT: 5.45 gm



SLHP104722AT
WT: 3.85 gm



SLHP104726AT
WT: 6.1 gm



SLHP104718AT
WT: 2.75 gm



SLHP104719AT
WT: 3.2 gm



SLHP104723AT
WT: 4.7 gm



SLHP104724AT
WT: 4.6 gm



SLHP104725AT
WT: 4.1 gm

Electroforming Hoops

Weight = Stone Wt. / Metal Wt.



SLHP104779AT
WT: 3.48 gm



SLHP104780AT
WT: 5 gm



SLHP104781AT
WT: 6.4 gm



SLHP104782AT
WT: 8.08 gm



SLHP104783AT
WT: 5.05 gm



SLHP104784AT
WT: 3 gm



SLHP104788AT
WT: 7.95 gm



SLHP104785SL
WT: 4.15 gm



SLHP104729AT
WT: 5.85 gm



SLHP104730G18SL
WT: 3.1 gm



SLHP104776AT
WT: 8 gm



SLHP104775AT
WT: 4.65 gm



SLHP104774AT
WT: 6.55 gm



SLHP104743AT
WT: 3.75 gm



SLHP104756AT
WT: 4.7 gm



SLHP104755AT
WT: 5.05 gm



SLHP104744AT
WT: 7.3 gm



SLHP104748D25MAT
WT: 7.75 gm



SLHP104757AT
WT: 7.75 gm



SLHP104758AT
WT: 5.85 gm



SLHP104749D25MAT
WT: 4.55 gm



SLHP104750D30MAT
WT: 10.3 gm



SLHP104751D30MAT
WT: 8.3 gm



SLER104740AT
WT: 4.9 gm



SLER104741AT
WT: 5.25 gm

Electroforming Hoops

Weight = Stone Wt. / Metal Wt.



SLHP104874SL
WT: 2.15 gm



SLHP104888SL
WT: 3.05 gm



SLHP104872SL
WT: 2.15 gm



SLHP104875SL
WT: 2.35 gm



SLHP104873SL
WT: 4.1 gm



SLHP104877SL
WT: 3 gm



SLHP104871SL
WT: 3.25 gm



SLHP104889SL
WT: 3.95 gm



SLHP104891SL
WT: 6.85 gm



SLHP104879G18RH
WT: 7.3 gm



SLHP104852A18SL
WT: 8.55 gm



SLHP104864D24MG18R
WT: 3.7 gm



SLHP104881D25MSL
WT: 5.5 gm



SLHP104880D25MSL
WT: 6.4 gm



SLHP104838AT
WT: 3.8 gm



SLHP104855D25MAT
WT: 5.65 gm



SLHP104856D24MAT
WT: 5.25 gm



SLHP104857D25MAT
WT: 6.65 gm



SLHP104865D31MAT
WT: 7.9 gm



SLHP104869D31MAT
WT: 8.05 gm



SLHP104866D30MAT
WT: 7.75 gm



SLHP104867D31MAT
WT: 7.75 gm



SLHP104868D31MAT
WT: 8.1 gm



SLHP104870D30MAT
WT: 7 gm



SLHP104878D30MAT
WT: 8.9 gm

Electroforming Hoops

Weight = Stone Wt. / Metal Wt.



SLER104739D29MAT
WT: 7.6 gm



SLHP104727AT
WT: 4.7 gm



SLHP104728AT
WT: 7 gm



SLE104604DC
WT: 5 gm



SLER181102G18SL
WT: 3.05 gm



SLHP104800AT
WT: 6.2 gm



SLHP104808AT
WT: 5.5 gm



SLHP104809AT
WT: 4.2 gm



SLHP104805AT
WT: 5.9 gm



SLHP104800AT
WT: 6.2 gm



SLHP104806AT
WT: 4.45 gm



SLER181614AT
WT: 5.3 gm



SLHP104810AT
WT: 6.9 gm



SLHP104807AT
WT: 2.85 gm



SLHP104757AT
WT: 3.4 gm



SLHP104976AT
WT: 2.5 gm



SLHP104977SL
WT: 3.5 gm



SLHP104978AT
WT: 4.45 gm



SLHP104979AT
WT: 4.85 gm



SLHP104854AT
WT: 7.4 gm



SLHP104853A18SL
WT: 4.9 gm



SLHP104882SL
WT: 3.05 gm



SLHP104883SL
WT: 2.2 gm



SLHP104876SL
WT: 3.75 gm



SLHP104884SL
WT: 3.15 gm

Electroforming Hoops

Weight = Stone Wt. / Metal Wt.



SLHP104939SL
WT: 4.2 gm



SLHP104940SL
WT: 4.7 gm



SLHP104941SL
WT: 3 gm



SLHP104942SL
WT: 3.55 gm



SLHP104943SL
WT: 3.65 gm



SLHP104922SL
WT: 3.75 gm



SLHP104944AT
WT: 2.75 gm



SLHP104781SL
WT: 6.4 gm



SLHP104924SL
WT: 5.4 gm



SLHP104927AT
WT: 4.2 gm



SLHP104852A18SL
WT: 0.3/8.25 gm



SLHP104891SL
WT: 7 gm



SLHP104910SL
WT: 4.35 gm



SLHP104926AT
WT: 4.7 gm



SLHP104931SL
WT: 4 gm



SLHP104932SL
WT: 4.2 gm



SLHP104933SL
WT: 5 gm



SLHP104934SL
WT: 4.45 gm



SLHP104937SL
WT: 2.2 gm



SLHP104938SL
WT: 3.95 gm



SLHP104935SL
WT: 4.15 gm



SLHP104936SL
WT: 3.55 gm



SLHP104870D30MAT
WT: 7 gm



SLHP104878D30MAT
WT: 8.9 gm



SLMHP149166AT
WT: 5.76 gm

Electroforming Hoops

Weight = Stone Wt. / Metal Wt.



SLHP105021SL
WT: 2.8 gm



SLHP105022SL
WT: 2.6 gm



SLHP105024SL
WT: 3.4 gm



SLHP105025SL
WT: 4.15 gm



SLHP105029SL
WT: 2.65 gm



SLHP105026SL
WT: 4.8 gm



SLHP105027SL
WT: 3.6 gm



SLHP105028SL
WT: 2.4 gm



SLHP105032AT
WT: 2.45 gm



SLHP104999AT
WT: 4.3 gm



SLHP105041AT
WT: 7.25 gm



SLHP105042AT
WT: 3.7 gm



SLHP105043G18AT
WT: 3.6 gm



SLHP105052AT
WT: 6.25 gm



SLHP105038AT
WT: 4.7 gm



SLHP105053AT
WT: 8 gm



SLHP105054AT
WT: 5.7 gm



SLHP105055AT
WT: 10.35 gm



SLHP105056AT
WT: 5.45 gm



SLHP105057AT
WT: 6.25 gm



SLHP105039AT
WT: 7 gm



SLHP105040AT
WT: 4.4 gm



SLHP104928AT
WT: 3.55 gm



SLHP104929AT
WT: 4.85 gm



SLHP104930AT
WT: 5.8 gm

Electroforming Hoops

Weight = Stone Wt. / Metal Wt.



SLER181556AT
WT: 9.1 gm



SLER182247AT
WT: 5.05 gm



SLER182248AT
WT: 4.97 gm



SLHP104825AT
WT: 2.73 gm



SLHP104975AT
WT: 3.1 gm



SLHP105032AT
WT: 4 gm



SLHP105062SL
WT: 4.1 gm



SLHP105063SL
WT: 3.75 gm



SLHP105064SL
WT: 4.2 gm



SLHP105065SL
WT: 4.05 gm



SLHP105074AT
WT: 4.3 gm



SLHP105075AT
WT: 4.5 gm



SLHP105076AT
WT: 4.7 gm



SLHP105077AT
WT: 4 gm



SLHP105078AT
WT: 3.25 gm



SLHP105079AT
WT: 4.35 gm



SLHP105080D22MAT
WT: 5.15 gm



SLHP105082SL
WT: 3.96 gm



SLHP105083SL
WT: 4.2 gm



SLHP105105AT
WT: 5.35 gm



SLHP105106AT
WT: 5.45 gm



SLHP105107AT
WT: 5.2 gm



SLHP105108AT
WT: 4.15 gm



SLHP105109AT
WT: 3.75 gm



SLHP105110AT
WT: 4.25 gm

Electroforming Hoops

Weight = Stone Wt. / Metal Wt.



SLER183053AT
WT: 5.3 gm



SLER183055AT
WT: 5.8 gm



SLHP105136SL
WT: 4.35 gm



SLHP105141SL
WT: 4.8 gm



SLHP105140SL
WT: 6.1 gm



SLHP105138SL
WT: 7.4 gm



SLHP105135SL
WT: 14.6 gm



SLHP105137SL
WT: 10.25 gm



SLHP105139SL
WT: 9.15 gm



SLHP105127AT
WT: 7.25 gm



SLHP105111AT
WT: 3.6 gm



SLHP105112AT
WT: 7.5 gm



SLHP105123AT
WT: 7.1 gm



SLHP104982D25MAT
WT: 3.35 gm



SLHP104988AT
WT: 3 gm



SLHP104987AT
WT: 3.7 gm



SLHP104981D40MAT
WT: 7.2 gm



SLHP104981D50MAT
WT: 9.9 gm



SLHP104980D50MAT
WT: 10.5 gm



SLHP104983AT
WT: 3.75 gm



SLE181216AT
WT: 3.45 gm



SLER181456AT
WT: 1.6 gm



NPSLE181247SL
WT: 4.85 gm



SLE181234SL
WT: 3.75 gm



SLE181238AT
WT: 4.8 gm

Electroforming Hoops

Weight = Stone Wt. / Metal Wt.



SLE181096SL
WT: 3.7 gm



SLHP104837AT
WT: 4.5 gm

Electroforming Pendant

Weight = Stone Wt. / Metal Wt.



SLP160478AT
WT: 1.2 gm



SLP160479AT
WT: 2.8 gm



SLP160480AT
WT: 2.45 gm



SLP160498SL
WT: 1.8 gm



SLP160482AT
WT: 1.6 gm



SLP160483AT
WT: 2.1 gm



SLP160476AT
WT: 5.8 gm



SLP160477AT
WT: 5.8 gm



SLP160489AT
WT: 1.5 gm



SLP160490AT
WT: 1.93 gm



SLP160491AT
WT: 1.05 gm



SLP160492AT
WT: 3.7 gm



SLP160494AT
WT: 3.4 gm



SLP160495AT
WT: 0.85 gm



SLP160497SL
WT: 1.8 gm



SLP160499AT
WT: 1.25 gm



SLPD132285AT
WT: 3.15 gm



SLPD132286AT
WT: 2.5 gm



SLP160544AT
WT: 2.4 gm



SLP160545AT
WT: 2.45 gm



SLP160546AT
WT: 2.2 gm



SLP160547AT
WT: 2.25 gm



SLP160548AT
WT: 2.05 gm



SLP160549AT
WT: 1.55 gm



SLP160550AT
WT: 1.75 gm

Electroforming Pendant

Weight = Stone Wt. / Metal Wt.



SLP160553AT
WT: 4.5 gm



SLP160554AT
WT: 3.8 gm



SLP181227AT
WT: 2.46 gm



SLP181230AT
WT: 1.7 gm



NPSLP160496AT
WT: 1.15 gm



SLP160551FG
WT: 1.8 gm



SLP160552FG
WT: 2.95 gm



SLP181217AT
WT: 2.82 gm



SLP181222AT
WT: 1.95 gm



SLP181233AT
WT: 2.68 gm



SLPD1606592T
WT: 1.75 gm



SLPD160684AT
WT: 1.55 gm



SLPD160685AT
WT: 1.85 gm



SLPD160686AT
WT: 1.28 gm



SLPD160687AT
WT: 1.7 gm



SLPD160688AT
WT: 2.2 gm



SLPD160689AT
WT: 2.1 gm



SLPD160690AT
WT: 1.55 gm



SLPD160691AT
WT: 2.65 gm



SLPD160692AT
WT: 2.2 gm



SLPD160693AT
WT: 1.7 gm



SLPD160694AT
WT: 1.05 gm



SLPD160695AT
WT: 1.15 gm



SLPD160696AT
WT: 1 gm



SLPD160697AT
WT: 1.15 gm

Electroforming Pendant

Weight = Stone Wt. / Metal Wt.



SLP160562AT



SLPD160660AT
WT: 1.9 gm



SLPD160662AT
WT: 1.85 gm



SLPD160671AT
WT: 2.05 gm



SLPD160672AT
WT: 1.2 gm



SLPD160673AT
WT: 1.6 gm



SLPD126344A18SL
WT: 0.11/2.49 gm



SLPD160904AT
WT: 1.7 gm



SLPD160905AT
WT: 1.85 gm



SLPD160670AT
WT: 1.5 gm



SLPD160921AT
WT: 1.55 gm



SLPD160699AT
WT: 1.75 gm



SLPD160700AT
WT: 3 gm



SLPD160701AT
WT: 3.6 gm



SLPD160774AT
WT: 10.65 gm



SLPD160742AT
WT: 2.25 gm



SLPD160770AT
WT: 5.8 gm



SLPD1607052T
WT: 1.8 gm



SLPD1607062T
WT: 3.05 gm



SLPD160716AT
WT: 0.8 gm



SLPD132281AT
WT: 2.65 gm



SLPD160711AT
WT: 1.95 gm



SLPD132282AT
WT: 2.5 gm



SLPD160714AT
WT: 1.5 gm



SLPD160669AT
WT: 1.65 gm

Electroforming Pendant

Weight = Stone Wt. / Metal Wt.



SLPD160713AT
WT: 3.6 gm



SLPD132284AT
WT: 2.95 gm



SLPD160723SL
WT: 3.65 gm



SLPD160724SL
WT: 4.4 gm



SLPD132286AT
WT: 2.5 gm



SLPD160717AT
WT: 7.75 gm



SLPD160722AT
WT: 4.4 gm



SLPD132283AT
WT: 1.35 gm



SLPD160712AT
WT: 1.45 gm



SLPD160715AT
WT: 1.8 gm



SLPD160718AT
WT: 5.35 gm



SLPD160725AT
WT: 4.2 gm



SLPD160720AT
WT: 4.8 gm



SLPD160721AT
WT: 3.3 gm



SLPD132284AT
WT: 2.95 gm



SLPD160769AT
WT: 3.4 gm



SLPD132288G2AT
WT: 0.6/2 gm



SLPD160740AT
WT: 2.9 gm



SLPD160741AT
WT: 3.4 gm



SLPD160768AT
WT: 2.8 gm



SLPD160866SL
WT: 1.2 gm



SLPD160902AT
WT: 1.35 gm



SLPD160863SL
WT: 1.1 gm



SLPD160864SL
WT: 1.1 gm



SLPD160865SL
WT: 1.25 gm

Electroforming Pendant

Weight = Stone Wt. / Metal Wt.



SLPD160912SB
WT: 1.1 gm



SLPD160912SK
WT: 1.05 gm



SLPD160703EN
WT: 1.65 gm



SLPD1607042T
WT: 2.1 gm



SLPD160702EN
WT: 1.9 gm



SLPD132298G18SL
WT: 0.02/1.68 gm



SLPD132300G18SL
WT: 2.05 gm



SLPD190045AT
WT: 4 gm



SLP160481AT
WT: 2.4 gm



NPSLP160493AT
WT: 1.35 gm



SLPD160661AT
WT: 2.15 gm



SLPD160664AT
WT: 1.95 gm



SLPD160901AT
WT: 1.55 gm



SLPD160929AT
WT: 1.4 gm



SLPD160933AT
WT: 1.35 gm



SLPD160698AT
WT: 1.85 gm



SLPD160916AT
WT: 1.3 gm



SLPD160919AT
WT: 1.15 gm



SLPD160920AT
WT: 1.8 gm



SLPD160922AT
WT: 1.7 gm



SLPD190359AT
WT: 1.3 gm



SLPD190363AT
WT: 2.1 gm



SLPD190364AT
WT: 2.55 gm



SLPD190366AT
WT: 2.1 gm



SLPD190367AT
WT: 2.45 gm

Electroforming Pendant

Weight = Stone Wt. / Metal Wt.



SLPD181223SL
WT: 2.65 gm



SLPD181240DC
WT: 1.65 gm



SLPD181477SL
WT: 2.25 gm



SLPD181808SL
WT: 2.45 gm



SLPD190330AT
WT: 2.5 gm



SLPD190362AT
WT: 1.65 gm



SLPD190365AT
WT: 1.2 gm



SLPD190396AT
WT: 1.6 gm



SLPD190378SL
WT: 2.7 gm



SLPD190375SL
WT: 1.7 gm



SLPD190359AT
WT: 1.3 gm



SLPD190362AT
WT: 1.65 gm



SLPD190363AT
WT: 2.1 gm



SLPD190364AT
WT: 2.55 gm



SLPD190365AT
WT: 1.2 gm



SLPD190366AT
WT: 2.1 gm



SLPD190367AT
WT: 2.45 gm



SLPD190376SL
WT: 1.25 gm



SLPD190379SL
WT: 1.2 gm



SLPD190380SL
WT: 3.6 gm



SLPD126389G18AT
WT: 1.55 gm



SLPD126407G18SL
WT: 1.2 gm



SLPD190402AT
WT: 4.7 gm



SLPD190404AT
WT: 1.45 gm

Electroforming Pendant

Weight = Stone Wt. / Metal Wt.



SLPD190405AT
WT: 1.6 gm



SLPD190397AT
WT: 3.6 gm



SLPD126404G18AT
WT: 2.25 gm



SLPD126385G18AT
WT: 1.65 gm



SLPD126386G18SL
WT: 1.25 gm



SLPD126406G18AT
WT: 1.55 gm



SLPD126408G18SL
WT: 1.8 gm



SLPD126409G18SL
WT: 2.05 gm



SLPD126387G18AT
WT: 2.15 gm



SLPD126402G18SL
WT: 1.1 gm



SLPD126403G18SL
WT: 2.2 gm



SLPD190403SL
WT: 1.7 gm



SLPD190406AT
WT: 2.05 gm



SLPD126405G18AT
WT: 2.3 gm



SLPD190413AT
WT: 1.55 gm



SLPD190414AT
WT: 2.3 gm



SLPD190415AT
WT: 3.4 gm



SLPD126413G18SL
WT: 0.03/1.52 gm



SLPD126414AT
WT: 0.02/1.48 gm



SLPD126415G18AT
WT: 1.9 gm



SLPD126416G18AT
WT: 0.02/1.03 gm



SLPD126417G18AT
WT: 1.35 gm



SLPD126419G18AT
WT: 0.02/1.33 gm



SLPD126420G18SL
WT: 0.03/1.32 gm



SLPD126422G18SB
WT: 0.02/2.03 gm

Electroforming Pendant

Weight = Stone Wt. / Metal Wt.



SLPD126422G18SL
WT: 2.05 gm



SLPD190437AT
WT: 2.55 gm



SLPD126386G18SB
Wt: 1.4 gm



SLPD126425G18AT
Wt: 2.7 gm



SLPD126429G18AT
Wt: 1.5 gm



SLPD190497AT
WT: 2.3 gm



SLPD126430G18AT
Wt: 1.3 gm



SLPD126430G18SB
Wt: 1.3 gm



SLPD126431G18AT
Wt: 1.4 gm



SLPD126431G18SB
Wt: 1.4 gm



SLPD190381AT
WT: 2.4 gm



SLPD190496AT
WT: 1.6 gm



SLPD190598AT
Wt: 2.1 gm



SLPD126428G18AT
Wt: 1.5 gm



SLPD126428G18SB
Wt: 1.5 gm



SLPD190377SL
WT: 2.55 gm



SLPD190595AT
WT: 2.9 gm



SLPD160720AT
WT: 4.8 gm



SLPD190594SL
WT: 7.55 gm



SLPD190754SL
WT: 2.05 gm



SLPD190755AT
WT: 2.35 gm



SLPD190778AT
WT: 2.85 gm



SLPD190797AT
WT: 3 gm



SLPD190818AT
WT: 2.30 gm

Electroforming Pendant

Weight = Stone Wt. / Metal Wt.



SLPD190213AT
WT: 5.45 gm



SLPD190210AT
WT: 9.9 gm



SLPD190211AT
WT: 9.95 gm



SLPD190212AT
WT: 6.45 gm



SLPD190209AT
WT: 7.45 gm