

Granual Earrings

Weight = Stone Wt. / Net Wt.



ER183099A18AT
WT: 1.36 gm

ER183100A18AT
WT: 1.83 gm

ER183101A18AT
WT: 1.83 gm

ER183102A18AT
WT: 1.60 gm

ER183103A18AT
WT: 1.43 gm



ER183105AT
WT: 3.09 gm

ER183106AT
WT: 3.01 gm

ER183107AT
WT: 2.38 gm

ER183108AT
WT: 2.90 gm

ER183104AT
WT: 2.55 gm



ER183119AT
WT: 1.53 gm

ER183120AT
WT: 1.63 gm

ER183121AT
WT: 1.73 gm

ER183122AT
WT: 1.70 gm

Heart Collection

Weight = Stone Wt. / Net Wt.



JE100754SL
WT: 1.1 gm



JE100783SL
WT: 1.2 gm



JE100853A18SL
WT: 0.04/0.71 gm



JE100857SL
WT: 2.1 gm



JE100865A18SL
WT: 0.02/0.94 gm



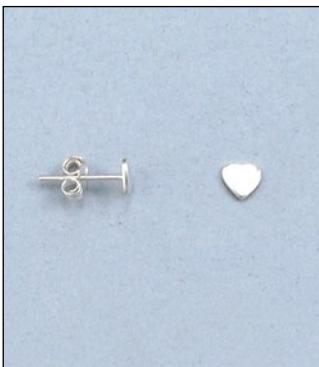
JE100866A18SL
WT: 0.06/0.89 gm



JE100871A18SL
WT: 0.03/0.6 gm



JE100960SL
WT: 0.67 gm



JE101001SL
WT: 0.52 gm



JE101194A18SL
WT: 0.01/0.68 gm



JE101425SL
WT: 1.35 gm



JE101651SL
WT: 0.85 gm



JE101667EN
WT: 0.65 gm



JE101712A18SL
WT: 0.02/1.03 gm



JE101713A18SL
WT: 0.03/1.32 gm



JE101719A18SL
WT: 0.09/1.71 gm

Heart Collection

Weight = Stone Wt. / Net Wt.



JE101721A18SL
WT: 0.19/1.46 gm



JE101722A18SL
WT: 0.34/2.56 gm



JE101807SL
WT: 0.96 gm



JE101825SL
WT: 0.88 gm



JE101911SL
WT: 1.6 gm



JE101926A18RH
WT: 0.03/0.67 gm



JE102272NBFSL
WT: 1.05 gm



JE121623A18SL
WT: 0.03/0.82 gm



JE100134SL
WT: 2.46 gm



JE100135SL
WT: 2.5 gm



JE100137SL
WT: 1.30 gm



JE100138SL
WT: 0.79 gm



JE100139SL
WT: 1.8 gm



JE100141SL
WT: 1.27 gm



JE100174SL
WT: 2.08 gm



JE100194SL
WT: 0.72 gm

Heart Collection

Weight = Stone Wt. / Net Wt.



JE100198SL
WT: 0.79 gm



JE100212SL
WT: 1.29 gm



JE180240SL
WT: 0.8 gm



JE180271A18SL
WT: 0.01/0.94 gm



JE180713RH
WT: 0.66 gm



JE181073DC
WT: 1.25 gm



JE180514DC
WT: 0.9 gm



JE181130DC
WT: 3.05 gm



JE181137DC
WT: 2 gm



JE181169DC
WT: 0.47 gm



JE132092A18SL
WT: 0.17/1.12 gm



JE121875A18DC
WT: 0.01/1.54 gm



ER181638SL
WT: 0.45 gm



ER181454A18SL
WT: 0.01/1.94 gm



ER181641SL



ER181701DC

Heart Collection

Weight = Stone Wt. / Net Wt.



ER181733SL
WT: 1.65 gm



ER181839A18SL
WT: 0.1/1.17 gm



ER181843SL
WT: 0.9 gm



ER182190SL
WT: 1.45 gm



EP160634SL
WT: 1.65 gm



ER181709A18SL
WT: 0.03/0.97 gm



ER1819223T
WT: 1.45 gm



ER1819233T
WT: 1.7 gm



ER1819243T
WT: 1.5 gm



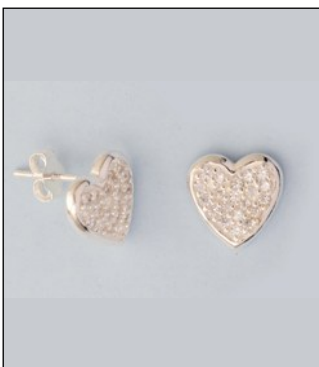
JE132140A40SL
WT: 0.09/0.91 gm



JE132156A18FG
WT: 0.06/1.59 gm



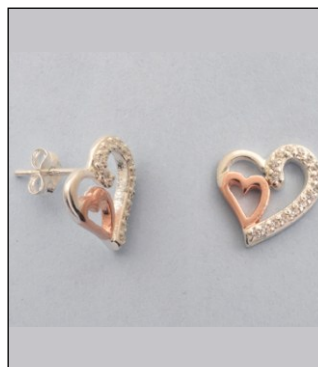
JE180070A18EN
WT: 0.03/0.88 gm



JE180626A18SL
WT: 0.16/2.29 gm



JE180551SL
WT: 1.5 gm



JE180588A182T
WT: 0.07/2.18 gm



JE1810452T
WT: 0.95 gm

Heart Collection

Weight = Stone Wt. / Net Wt.



ER182674DC
WT: 2.2 gm



ER182692SL
WT: 3.2 gm



ER182719DC
WT: 1.1 gm



ER182820SL
WT: 2.40 gm



ER182847DC
WT: 1.19 gm



ER182850SL
Wt 1.48 gm



ER182854SL
WT: 1.45 gm



ER1827093T
WT: 1.35 gm



ER1828722T
WT: 1.38 gm



ULZER182895A182T
WT: 0.08/1.72 gm

Heart Collection

Weight = Stone Wt. / Net Wt.



JE181332G18FG
WT: 0.02/0.54 gm



JE1802142T
WT: 2.75 gm



JE180532FG
WT: 0.85 gm



JE132149A38FG
WT: 0.07/1.63 gm



JE132150A38FG
WT: 0.14/2.11 gm



JE132156A18FG
WT: 0.17/1.68 gm



JE1805142T
WT: 0.9 gm



JE121516A18FG
WT: 0.05/1.7 gm



JE102236RG
WT: 1.05 gm



JE1805133T
WT: 2.45 gm



JE121976EN
WT: 2.35 gm



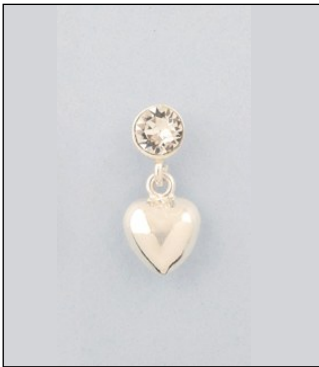
JE180675EN
WT: 2 gm



JE181270MSAT
WT: 0.09/0.86 gm

Heart Collection

Weight = Stone Wt. / Net Wt.



JE181012G18SL
WT: 0.08/1.22 gm



JE181186DC
WT: 1.2 gm



JE180068DC
WT: 2.3 gm



ER1828642T
WT: 2.12 gm



JE101952SL
WT: 1.7 gm



JE100601SL
WT: 0.85 gm



JE101209SL
WT: 1.74 gm



JE101262SL
WT: 1.45 gm



JE101375DC
WT: 2.74 gm



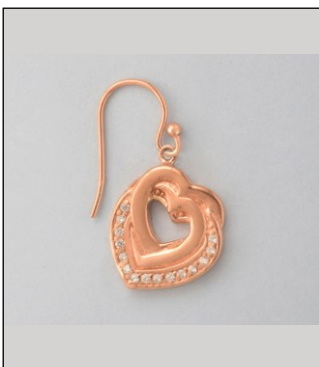
JE101656SL
WT: 2.3 gm



ER181707SL
WT: 2.65 gm



JE132056A18SL
WT: 0.13/3.12 gm



JE132260A18RG
WT: 0.12/5.58 gm



JE180213A18SL
WT: 0.04/1.91 gm



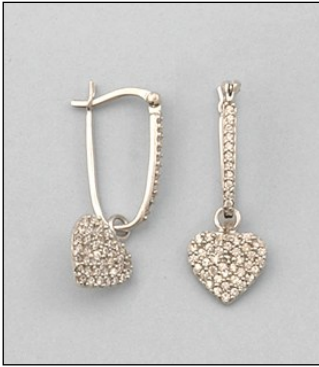
JE180220A18RG
WT: 0.15/2.4 gm



JE180221A18RH
WT: 0.04/1.26 gm

Heart Collection

Weight = Stone Wt. / Net Wt.



JE180231A18RH
WT: 0.20/2.55 gm



JE181184DC
WT: 2.1 gm



JE1016802T
WT: 2.35 gm



JE180277EN
WT: 3.22 gm



JE100802DC
WT: 1.9 gm



JE132021AT
WT: 3.02 gm



JE180782D25MRH
WT: 3.95 gm



JE180411D35MSL
WT: 3.15 gm



ER1825832T
WT: 2.55 gm



LZER1826002T
WT: 2.5gm



JE180073RH
WT: 3.9 gm



JE1018963T
WT: 4.6 gm



ER182688AT
WT: 1.85 gm



ER182821SL
WT: 1.8 gm



ER182846SL
WT: 2.50 gm



ER182863A182T
WT: 2.73 gm

Heart Collection

Weight = Stone Wt. / Net Wt.



JE181149A18RH
WT: 0.03/1.32 gm



ER1825832T
WT: 2.55 gm