

Flower

Weight = Stone Wt. / Net Wt.



JE100894SL
WT: 1.4 gm



ER181655SL
WT: 0.6 gm



ER181656SL
WT: 0.75 gm



JE100614SL
WT: 1.37 gm



JE100966SL
WT: 1.55 gm



JE100968SL
WT: 0.7 gm



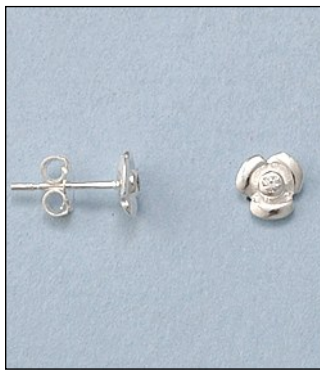
JE100999A182T
WT: 0.03/1.5 gm



JE101267SL
WT: 1.55 gm



JE101280NPSL
WT: 0.16/1.24 gm



JE101314A18SL
WT: 0.03/0.92 gm



JE101316A18SL
WT: 0.02/1.86 gm



JE101323A18SL
WT: 0.08/1.15 gm



JE101412SL
WT: 1.4 gm



JE101417SL
WT: 1.33 gm



JE101455SL
WT: 1.95 gm



JE132072A182T
WT: 0.06/1.75 gm

Flower

Weight = Stone Wt. / Net Wt.



JE101692SL
WT: 0.5 gm



JE132112A18SL
WT: 0.04/0.96 gm



JE132113M1SL
WT: 0.15/1.4 gm



JE181107AT
WT: 0.9 gm



JE101313A18SL
WT: 0.19/2.11 gm



JE100049A47SL
WT: 0.89/2.05 gm



JE132086A18SL
WT: 0.03/1.72 gm



JE132204RH
WT: 5.15 gm



JE101949SL
WT: 4.56 gm



JE180677A18FG
WT: 0.75 gm



JE180266DC
WT: 6.9 gm



ER1821122T
WT: 1 gm



JE101200SL
WT: 2.05 gm



ER181555A55SL
WT: 0.02/1.83 gm



JE102331A18RH
WT: 0.14/1.01 gm



JE102335AT
WT: 1.35 gm

Flower

Weight = Stone Wt. / Net Wt.



ER182717SL
WT: 1.8 gm



ER182718LZ
WT: 1.6 gm



ER182762SL
WT: 0.75 gm



ER182800AT
WT: 1.37 gm



ER182801AT
WT: 1.48 gm



ER1828792T



ER182848A18SL
WT: 1.24 gm



ER182870SL
WT: 1.07 gm



ER182892A18RH
WT: 0.05/1.35 gm



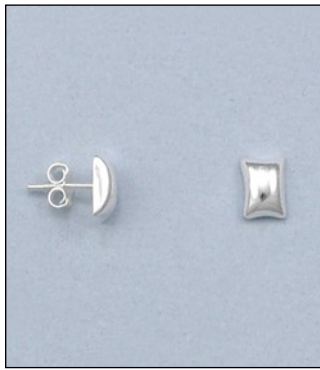
ER1828942T
Wt: 1.2 gm

Geometric Earrings

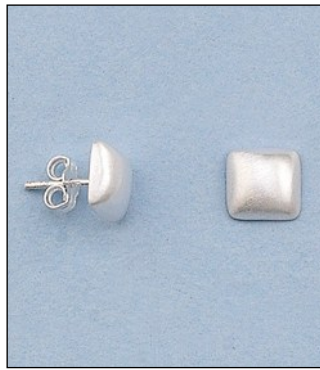
Weight = Stone Wt. / Net Wt.



JE100663FF
WT: 1.11 gm



JE100663SL
WT: 1.15 gm



JE100664FF
WT: 1.52 gm



JE100666SL
WT: 1.2 gm



JE100671SL
WT: 1.4 gm



JE100680FF
WT: 1.45 gm



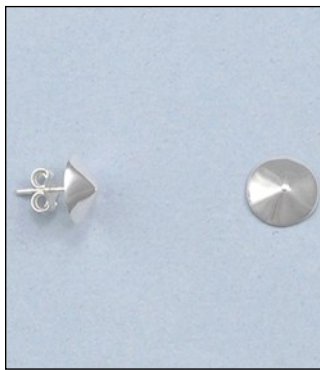
JE100680SL
WT: 1.39 gm



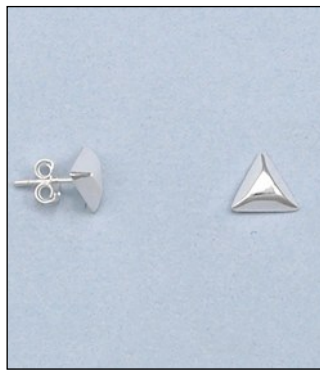
JE100682SL
WT: 1.76 gm



JE100683SL
WT: 1.64 gm



JE100685SL
WT: 1.3 gm



JE100686SL
WT: 1.06 gm



JE100687SL
WT: 1.69 gm



JE100688FF
WT: 1.6 gm



JE100688SL
WT: 1.42 gm



JE100689FF



JE100689SL

Geometric Earrings

Weight = Stone Wt. / Net Wt.



ER181592SL
WT: 0.6 gm



ER182187AT
WT: 2.4 gm



JE132232RH
WT: 1.8 gm



JE180055A18SL
WT: 0.01/1.39 gm



JE180056A18SL
WT: 0.01/1.54 gm



JE180057A18SL
WT: 0.01/1.09 gm



JE180058A18SL
WT: 0.01/1.39 gm



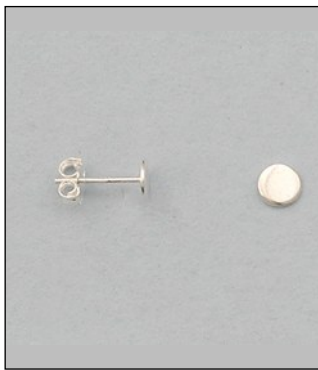
JE180116SL
WT: 0.85 gm



JE180162SL
WT: 0.55 gm



JE180163SL
WT: 0.5 gm



JE180164SL
WT: 0.6 gm



JE180165SL
WT: 0.65 gm



JE180166SL
WT: 0.5 gm



JE180170AT
WT: 1.05 gm



JE180176FG
WT: 0.85 gm



JE180188SL
WT: 1.48 gm

Geometric Earrings

Weight = Stone Wt. / Net Wt.



JE180260A18AT
WT: 0.03/1.75 gm



JE180704RH
WT: 0.55 gm



JE180710RH
WT: 0.57 gm



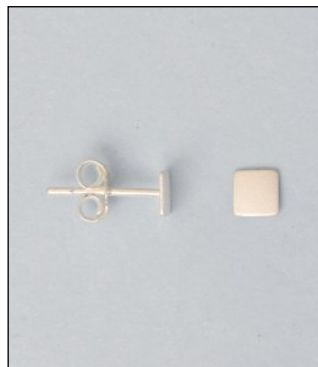
JE180711RH
WT: 0.7 gm



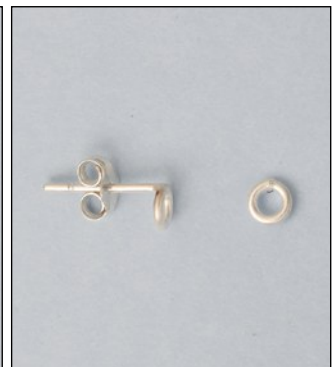
JE180712RH
WT: 0.53 gm



JE181098SL
WT: 1 gm



JE1806632T
WT: 0.4 gm



JE1806642T
WT: 0.4 gm



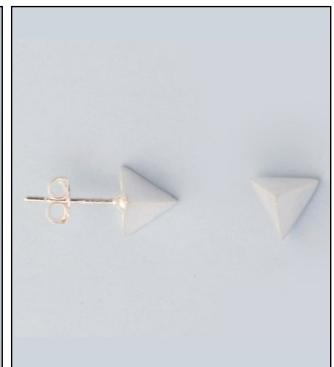
JE1806672T
WT: 0.38 gm



JE1813302T
WT: 0.54 gm



JE180622FG
WT: 1.5 gm



JE180622SL
WT: 1.6 gm



ER182816A18SL
WT: 1.31 gm



JE180399A18RH
WT: 0.15/4.1 gm



JE180402A18RH
WT: 0.33/5.47 gm



NPSLE181252NPSL
WT: 0.74/5.36 gm

Geometric Earrings

Weight = Stone Wt. / Net Wt.



JE180399A18RG
WT: 0.15/4.1 gm



SLE181254A18SL
WT: 0.36/3.04 gm



SLE181253NPSL
WT: 0.66/3.59 gm



JE1803972T
WT: 2.2 gm



JE1803982T
WT: 2.75 gm



ER182918NPSL
WT: 0.34/1.66 gm

Geometric Earrings

Weight = Stone Wt. / Net Wt.



JE102380SL
WT: 2.1 gm



JE102381SL
WT: 2.1 gm



JE102382SL
WT: 2.35 gm



JE102385SL
WT: 1.35 gm



JE102394SL
WT: 1.8 gm



JE102399SL
WT: 2.6 gm



JE102400SL
WT: 2.32 gm



JE102401SL
WT: 2.65 gm



JE180758A18RH
WT: 0.06/0.99 gm



JE180727NBFRH
WT: 1.35 gm



ER181737DC
WT: 1.15 gm



ER181743DC
WT: 1.8 gm



ER1819382T
WT: 2.75 gm



JE180837RH
WT: 2.6 gm



JE180871SL
WT: 4.45 gm



JME146354RH
WT: 2.35 gm

Geometric Earrings

Weight = Stone Wt. / Net Wt.



ES280CDSL
WT: 2.9 gm



JE180815RG
WT: 0.1/4.45 gm



ER181662SL
WT: 2 gm



ER181663SL
WT: 2.05 gm



ER181693SL
WT: 1.45 gm



ER181712SL
WT: 2.15 gm



ER181713SL
WT: 2.35 gm



ER181732SL
WT: 2.15 gm



ER181744SL
WT: 2.65 gm



ER181745SL
WT: 2.6 gm



ER181746SL
WT: 2 gm



JE1802003T
WT: 4.35 gm



JE102993FG
WT: 1.85 gm



JE180515FG
WT: 1.15 gm



JE180559A18FG
WT: 0.14/2.91 gm



ER182573SL
WT: 1.5 gm

Geometric Earrings

Weight = Stone Wt. / Net Wt.



ER182804SL
WT: 1.8 gm



ER182805SL
WT: 1.6 gm



ER182806SL
WT: 1.4 gm



ER182807SL
WT: 2.05 gm



ER182808SL
WT: 1.6 gm



ER182809SL
WT: 1.7 gm



ER182810SL
WT: 2.1 gm



ER182811SL
WT: 2.05 gm