

# CZ Earrings

Weight = Stone Wt. / Net Wt.



JE100944A38SL  
WT: 0.01/0.53 gm



JE101470A16SL  
WT: 0.4/1 gm



JE101509M1SL  
WT: 0.54/0.96 gm



JE101672A18SL  
WT: 0.54/1.32 gm



JE180340A18SL  
WT: 0.08/1.57 gm



JE100207A18SL  
WT: 2.59/4.15 gm



JE100524A2AT  
WT: 0.97/3.33 gm



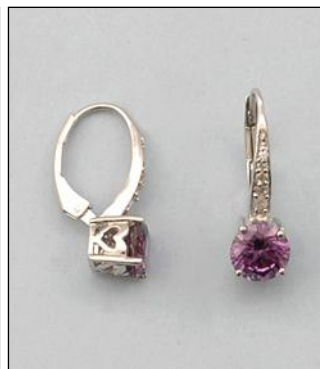
JE101880A18SL  
WT: 1.35/2.12 gm



JE101897A18SL  
WT: 0.44/1.56 gm



JE101898A18SL  
WT: 0.36/1.59 gm



JE132227M1RH  
WT: 1.25/2.15 gm



JE132229M1RH  
WT: 0.85/2.45 gm



JE180084A18RH  
WT: 1.09/2.36 gm



JE180086A18RH  
WT: 0.27/1.53 gm



JE180348A18RH  
WT: 0.16/3.19 gm



JE180374A18RH  
WT: 0.57/2.5 gm

# CZ Earrings

Weight = Stone Wt. / Net Wt.



LWE181963S5MA18RH  
WT: 0.32/1.03 gm



LWE181963S6MA18FG  
WT: 0.48/1.17 gm



LWE181964S5MA18RH  
WT: 0.35/1 gm



LWE181964S6MA18RH  
WT: 0.60/1.15 gm



LWE181966S4X6MA18R  
WT: 0.44/0.91 gm



LWE181966S5X7MA18R  
WT: 0.52/1.23 gm



LWE181967S6MA18RH  
WT: 0.57/1.13 gm



LWE181968S5MA18RH  
WT: 0.44/1.06 gm



JP132194M1SL  
WT: 0.81/1.09 gm



JE102117G16SL  
WT: 1.5/1.4 gm



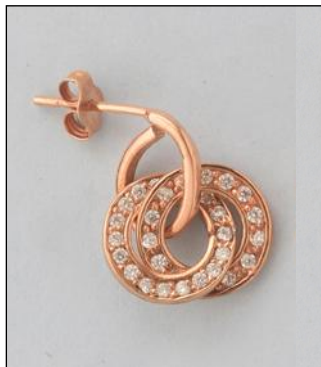
AF0817A25RH  
WT: 1.4/4.4 gm



JE180759C18RH  
WT: 0.55 gm



JE180762A18RH  
WT: 0.05/0.45 gm



JE132257A18RG  
WT: 0.26/3.09 gm



JE132257A18RH  
WT: 0.26/3.09 gm



JE181139A18RH  
WT: 0.03/1.42 gm



# CZ Earrings

Weight = Stone Wt. / Net Wt.



JE132079A07SL  
WT: 0.06/0.84 gm



JE132171A7SL  
WT: 0.9/2.65 gm



JE132176A2SL  
WT: 0.47/2.43 gm



JE100361M1SL  
WT: 0.3/1.6 gm



JE100362M1SL  
WT: 1.8 gm



JE101674G10SL  
WT: 1/1.6 gm



JE101956A43SL  
WT: 1/0.95 gm



JE101957A38SL  
WT: 0.89/1.03 gm



JE101957A43SL  
WT: 0.89/1.03 gm



JE101962M1SL  
WT: 1.59/1.46 gm



JE102147G46SL  
WT: 0.74/2.86 gm



JE102149G2SL  
WT: 0.7/3.5 gm



JE102151G26SL  
WT: 0.76/2.54 gm



JE102157G12SL  
WT: 0.68/1.87 gm



JE102161G3SL  
WT: 0.95/2.05 gm



JE102162G3SL  
WT: 0.95/2.5 gm

# CZ Earrings

Weight = Stone Wt. / Net Wt.



JE102998A18RH  
WT: 0.76/1.19 gm



JE121712G3SL  
WT: 2.6/2.5 gm



JE102118D16MSL  
WT: 0.8 gm



JE101628A16SL  
WT: 1.34/0.79 gm



JE101577A7SL  
WT: 1.35/1.64 gm



JE104229D20MA32SL  
WT: 0.7/3.5 gm



JE101929A18SL  
WT: 1.2/1 gm



JE101929A41SL  
WT: 1.46/1.04 gm



JE101929A58SL  
WT: 1.46/1.04 gm



JE101930A18SL  
WT: 1.7/1.08 gm



JE101930A41SL  
WT: 1.72/1.08 gm



JE101930A58SL  
WT: 1.72/1.08 gm



JE101931A18SL  
WT: 1.2/0.9 gm



JE101931A38SL  
WT: 1.41/0.91 gm



JE101931A41SL  
WT: 1.75/0.9 gm



JE101931A58SL  
WT: 1.75/0.9 gm



# CZ Earrings

Weight = Stone Wt. / Net Wt.



JE102062A5SL  
WT: 0.28/0.95 gm



JE102062A10SL  
WT: 0.28/0.92 gm



JE102063A5SL  
WT: 0.45/1.30 gm



JE102994A26SL  
WT: 0.84/3.41 gm



JE121722G46RH  
WT: 3/3.9 gm



JE121725G3RH  
WT: 3./4.1 gm



JE121727G15RH  
WT: 1.8/3.3 gm



JE121735G15RH  
WT: 2.8/5 gm



JE100117M1SL  
WT: 0.33/3.33 gm



JE180493A18SL  
WT: 0.2/1.75 gm



JE180341A18FG  
WT: 0.11/1.49 gm



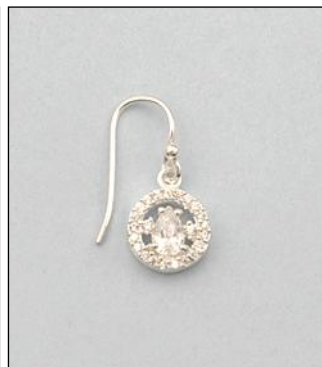
JE180211A18SL  
WT: 0.22/2.08 gm



JE132208A182T  
WT: 0.13/3.92 gm



JE132212A182T  
WT: 0.18/5.02 gm



JE180222A18SL  
WT: 0.34/2.54 gm



JE180197A18SL  
WT: 0.12/1.73 gm

# CZ Earrings

Weight = Stone Wt. / Net Wt.



JE101616A18DC  
WT: 0.11/3.49 gm



JE101618A18DC  
WT: 0.11/3.09 gm



JE101537A18DC  
WT: 0.09/4.61 gm



JE101537A182T  
WT: 0.09/4.61 gm



JE101572DC  
WT: 3.75 gm



JE101612A18DC  
WT: 0.09/3.01 gm



JE101614A18DC  
WT: 0.1/3.05 gm



AF0654A18RH  
WT: 0.4/5.2 gm



AF0628A183T  
WT: 0.11/3.84 gm



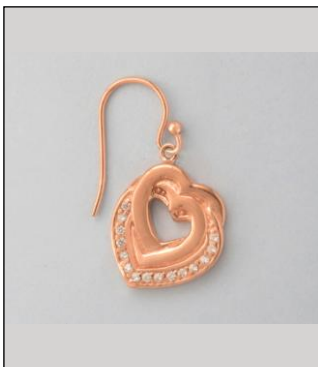
JE181149A18RH  
WT: 0.03/1.32 gm



JE180231A18RH  
WT: 0.20/2.55 gm



JE101764A18SL  
WT: 0.09/1.56 gm



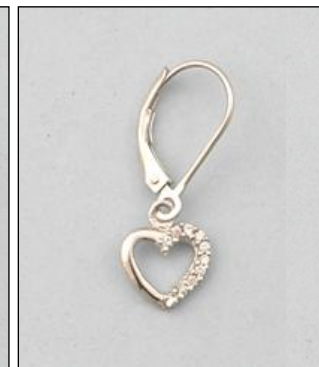
JE132260A18RG  
WT: 0.12/5.58 gm



JE180213A18SL  
WT: 0.04/1.91 gm



JE180220A18RG  
WT: 0.15/2.4 gm



JE180221A18RH  
WT: 0.04/1.26 gm



# CZ Earrings

Weight = Stone Wt. / Net Wt.



JE102931M1RH  
WT: 1.66/2.24 gm



JE102978A18RH  
WT: 0.12/1.58 gm



JE102883A18SL  
WT: 0.19/4.86 gm



JE102891A18RNP  
WT: 0.5/7.3 gm



ER103079A18SL  
WT: 0.04/1.91 gm



JE102950A18SL  
WT: 0.03/1.52 gm



JE121635M1SL  
WT: 1.33/2.47 gm



ER182815SL  
Wt: 1.9 gm



ER182766A18SL  
Wt: 0.77 gm



ER182767A18SL  
Wt: 1.60 gm



ER182768A18SL  
Wt: 2.26 gm



ER182770A18SL  
Wt: 1.46 gm



ER182765A18SL  
Wt: 1.63 gm



ER182829A18SL  
Wt: 0.63 gm



ER182817A18SL  
Wt: 1.07 gm



ER182764A18SL  
Wt: 1.66 gm

# CZ Studs

Weight = Stone Wt. / Net Wt.



1S72222S2MA18SL  
WT: 0.04/0.36 gm



1S72222S2MA18WENSL  
WT: 0.03/0.2 gm



1S72222S4MA18SL  
WT: 0.19/0.43 gm



39030S4MA18SL  
WT: 0.18/0.72 gm



AF0111A18SL  
WT: 0.16/0.39 gm



AF0112A18SL  
WT: 0.55/0.45 gm



AF0113A18SL  
WT: 0.3/0.36 gm



LWSE181943S5MA18SL  
WT: 0.33/0.43 gm



EP132291A18SL  
WT: 0.34/0.71 gm



LWSE181943S6MA18SL  
WT: 0.57/0.63 gm



LWSE181943S10MA18S  
WT: 2.65/1.25 gm



ER2941S3MA18SSL  
WT: 0.07/0.34 gm



ER181836A18SL  
WT: 0.44/1.81 gm



ER181838A18SL  
WT: 0.36/1.44 gm



ER181844A18SL  
WT: 0.48/1.32 gm



ER181845A18SL  
WT: 0.26/0.69 gm





ER181858A18SL  
WT: 0.14/0.56 gm



ER181960A18SL  
WT: 0.1/0.4 gm



JE100428S3MA18SL  
WT: 0.06/0.61 gm



JE100428S4MA18SL  
WT: 0.18/0.65 gm



JE100428S5MA18SL  
WT: 0.36/0.89 gm



JE100428S6MA18SL  
WT: 0.61/0.89 gm



JE100428S8MA18SL  
WT: 1.34/1.44 gm



JE100429S4MA18SL  
WT: 0.22/0.82 gm



JE100429S6MA18SL  
WT: 0.74/1.12 gm



JE100429S7MA18SL  
WT: 1.12/1.92 gm



JE100429S8MA18SL  
WT: 1.76/1.70 gm



JE100430S4X6A18SL  
WT: 0.32/0.72 gm



JE101388A16SL  
WT: 0.15/0.6 gm



JE101389A47SL  
WT: 0.44/1.06 gm



JE101390A38SL  
WT: 0.36/0.94 gm



JE101637S3MA18NBFS  
WT: 0.08/0.32 gm



JE101637S4MA9S  
WT: 0.14/0.51 gm



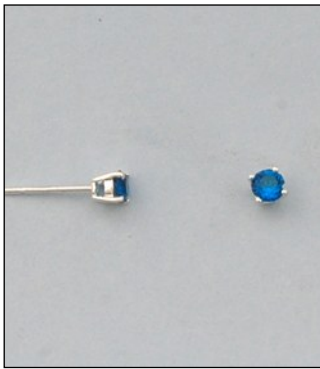
JE101637S4MA16S  
WT: 0.15/0.65 gm



JE101637S4MA18NBFS  
WT: 0.15/0.4 gm



JE101637S4MA18SL  
WT: 0.20/0.60 gm



JE101637S4MC88NBFS  
WT: 0.08/0.37 gm



JE101637S5MA9S  
WT: 0.32/0.63 gm



JE101637S5MA10S  
WT: 0.2/0.57 gm



JE101637S5MA16S  
WT: 0.32/0.63 gm



JE101637S5MA18NBFS  
WT: 0.36/0.58 gm



JE101637S5MA18S  
WT: 0.36/0.63 gm



JE101637S5MA22S  
WT: 0.28/0.57 gm



JE101637S5MA40S  
WT: 0.15/0.80 gm



JE101637S5MA43S  
WT: 0.035/0.97 gm



JE101637S5MA46S  
WT: 0.32/0.63 gm



JE101637S5MA47S  
WT: 0.032/0.63 gm



JE101637S5MA55S  
WT: 0.4/0.7 gm



# CZ Studs

Weight = Stone Wt. / Net Wt.



JE101637S6MA15NBFS  
WT: 0.31/0.46 gm



JE101637S7MA15NBFS  
WT: 0.45/0.78 gm



JE101637S7MA18NBFS  
WT: 1.85 gm



JE101637S9MA15NBFS  
WT: 0.88/1.12 gm



JE101725S4MA9S  
WT: 0.15/0.61 gm



JE101725S4MA16S  
WT: 0.22/0.6 gm



JE101725S4MA18NBFR  
WT: 0.23/0.45 gm



JE101725S5MA18NBFR  
WT: 0.44/0.61 gm



JE101725S6MA15NBFS  
WT: 0.4/1.05 gm



JE101725S6MA18NBFR  
WT: 0.74/0.75 gm



JE101725S8MA15NBFS  
WT: 1.06/1.24 gm



JE101725S8MA18NBFR  
WT: 1.72/1.48 gm



JE101814S5MA18NBFS  
WT: 0.46/0.59 gm



JE101814S6MA18NBFS  
WT: 0.76/0.69 gm



JE101814S7MA18NBFS  
WT: 1.16/1.14 gm



JE101814S8MA18NBFS  
WT: 1.82/1.53 gm

# CZ Studs

Weight = Stone Wt. / Net Wt.



JE101916S5MA18SL  
WT: 0.2/1.55 gm



JE101916S6MA18SL  
WT: 0.5/1.95 gm



JE101916S7MA18SL  
WT: 0.60/2.26 gm



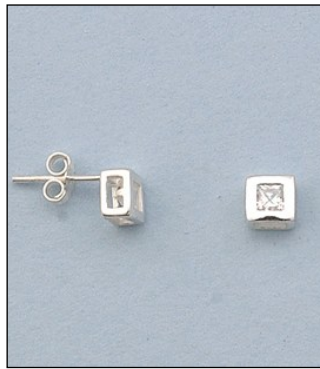
JE101927A18RH  
WT: 0.6/1 gm



JE101927S5MA18RH  
WT: 0.34/1.11 gm



JE101927S7MA18RH  
WT: 0.9/1.35 gm



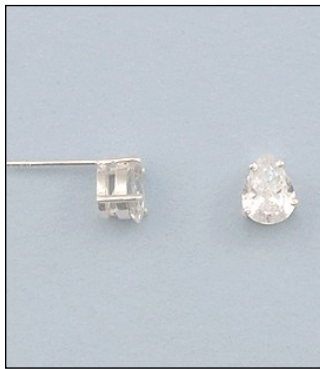
JE101928A18SL  
WT: 0.18/1.02 gm



JE102013A15NBFS  
WT: 0.28/0.64 gm



JE102015A15NBFS  
WT: 0.40/1.04 gm



JE102015A18NBFS  
WT: 0.72/0.98 gm



JE102016A15NBFS  
WT: 0.14/0.56 gm



JE102016A18NBFS  
WT: 0.28/0.5 gm



JE102017A15NBFS  
WT: 0.64/1.13 gm



JE102018A18NBFS  
WT: 1.64/1.16 gm



JE102031S5MA18SL  
WT: 0.26/0.68 gm



JE102032S5MA18SL  
WT: 0.34/0.63 gm



# CZ Studs

Weight = Stone Wt. / Net Wt.



JE102033S4X6MA18S  
WT: 0.38/0.79 gm



JE102035S4X6MA18S  
WT: 0.30/0.70 gm



JE102035S5X7MA18S  
WT: 0.52/0.86 gm



JE102137S4MA18RH  
WT: 0.18/0.84 gm



JE102137S5MA18RH  
WT: 0.36/1.01 gm



JE102137S6MA18RH  
WT: 0.6/1 gm



JE102137S8MA18RH  
WT: 1.35/1.39 gm



JE102137S10MA18RH  
WT: 2.58/1.87 gm



JE102155A18SL  
WT: 0.76/1.79 gm



JE102175S4MA18SL  
WT: 0.18/0.67 gm



JE102176S4MA18SL  
WT: 0.22/0.73 gm



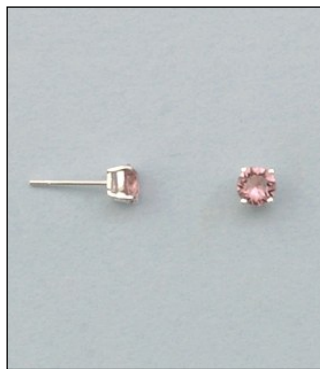
JE102224A18RH  
WT: 0.60/0.46 gm



JE102225A18RH  
WT: 0.6/1.5 gm



JE102368S3MA18SL  
WT: 0.11/0.54 gm



JE102378S5P3MC14SL  
WT: 0.18/0.64 gm



JE102378S5P3MC16SL  
WT: 0.18/0.64 gm

# CZ Studs

Weight = Stone Wt. / Net Wt.



JE102378S5P3MC55SL  
WT: 0.18/0.64 gm



JE102440A18FG  
WT: 1.35/1.85 gm



JE102440A18SL  
WT: 1.35/2.05 gm



JE102441A18FG  
WT: 1.35/2.1 gm



JE102442A18FG  
WT: 1.35/1.8 gm



JE102442A18SL  
WT: 1.35/1.8 gm



JE102443A18FG  
WT: 1.35/1.85 gm



JE102443A18SL  
WT: 1.35/1.85 gm



JE102444A18FG  
WT: 1.35/2 gm



JE102444A18SL  
WT: 1.35/1.9 gm



JE102454A18SL  
WT: 1.3/2 gm



JE102460CYABRH  
WT: 0.34/1.56 gm



JE132168A12SL  
WT: 0.74/0.76 gm



JE180025S4MA18SL  
WT: 0.14/0.56 gm



JE180074A18RH  
WT: 0.26/0.59 gm



JE180075A18RH  
WT: 0.4/0.6 gm



# CZ Studs

Weight = Stone Wt. / Net Wt.



JE180076A18RH  
WT: 0.36/0.49 gm



JE180077A18RH  
WT: 0.48/0.47 gm



JE180078A18RH  
WT: 0.18/0.52 gm



JE180079A18RH  
WT: 0.36/0.59 gm



JE180112A18RH  
WT: 0.74/1.66 gm



JE180239A18SL  
WT: 0.34/1.21 gm



JE180241A18SL  
WT: 0.92/1.68 gm



JE180631A18FG  
WT: 0.36/0.89 gm



JE180889S4MA18RH  
WT: 0.09/0.66 gm



LWSE181939S5MA38RH  
WT: 0.35/0.59 gm



LWSE181939S5MA41RH  
WT: 0.35/0.59 gm



LWSE181939S6MA18SL  
WT: 0.60/0.77 gm



LWSE181939S7MA18SL  
WT: 0.91/0.79 gm



LWSE181939S8MA18SL  
WT: 1.17/0.84 gm



LWSE181939S10MA18S  
WT: 2.58/1.07 gm



LWSE181940S4MA18SL  
WT: 0.25/0.5 gm



ER182904S3MA18RH  
WT: 0.08/0.47 gm



ER182904S4MA18RH  
WT: 0.18/0.5 gm



ER182904S5MA18RH  
WT: 0.48/0.47 gm



ER182904S6MA18RH  
WT: 0.6/0.70 gm



ER182904S7MA18RH  
WT: 0.91/0.74 gm



ER182904S8MA18RH  
WT: 1.34/0.86 gm



ER182904S9MA18RH  
WT: 1.85/1.2 gm



ER182904S10MA18RH  
WT: 2.58/0.97/0.72 gm



LWSE181940S5MA18SL  
WT: 0.44/0.56 gm



LWSE181941S5X7A18S  
WT: 0.44/0.76 gm



LWSE181943S4MA18SL  
WT: 0.15/0.45 gm



LWSE181943S4MA38RH  
WT: 0.18/0.45 gm



LWSE181946S6MA18SL  
WT: 0.48/0.57 gm



LWSE181945S5MA18SL  
WT: 0.36/0.69 gm