

Range of Lamination Machine



Optimum Precision

Automatic Thermal Lamination Machine



Fully Automatic Thermal Lamination Machine is suitable for sheet to sheet lamination.

Salient Features:

- Automatic Paper Feeder (vacuum pump system without oil system)
- Man-Machine Interface (easy and automatic operation)
- Electro Magnetic heating system
- Automatic adjustment
- Air Shaft (with Tension System)
- Film Cutting and Film Perforation Blade
- Pull Guide and Auto Pull
- Anti-Curve Device
- Pneumatic Dividing (with Auto Stacker)
- Dividing Structure (wash and change roller easily)

Optional:

Chain Knife Cutter for PET film.

Technical Specifications	MRS820
Max. Paper Width	820x1000mm
Min. Paper Size	240x270mm
Laminating Temperature	≤ 120°C
Paper Thickness	100-500g/m ²
Laminating Speed	60m/min
Diameter of Heating Roller	320mm
Diameter of Film Paper core	≤ 76mm (3 inch)
Power	25 kw / 380 Volts / 50 Hz
Air Pressure	8 Bar (Compressed)
Weight	2550 kg
Dimensions	6000 x 1600 x 1800mm

Note : Needs Compressed Air connection & Hydraulic Oil at the time of installation at customer end.



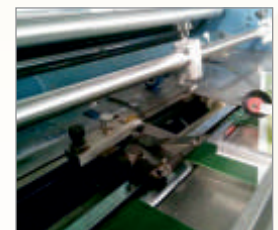
Automatic Paper Feeder



Electro Magnetic Heating



Pull Guide



Side Pull Guide



Film Perforation & Cutting Blade



Film Roll Lifter

Semi-Automatic Thermal Lamination Machine

In-Line divisional cutting device



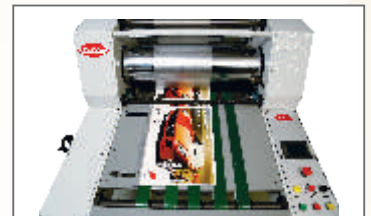
“Memory” Semi Automatic Thermal Lamination Machine is suitable for sheet to sheet lamination.

Salient Features:

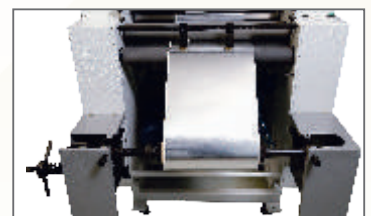
- Manual feeding table with side gauge for faster & easier feeding of long sheets.
- The unique pneumatically control stopper feeder device eliminates skilled operator requirement
- PLC control with touch screen, digital temperature controller & variable speed AC drive ensures ease of operation for operator.
- Large Diameter high precision mirror finished Chrome Roller, with Hydraulic Pressure, with built-in Oil Heating & Thermostatically Controlled Temperature ensures even heat across the cylinder thus results in high quality lamination in Thermal Process.
- Equipped with pneumatically controlled In-Line divisional cutting device (Auto-Cut) and Reel Rewinding unit for lower grammage paper < 130 gsm.



PLC Touch Panel



Stopper Feeder Attachment



Optional : Reel Rewinding Unit

Technical Specifications	Model 14”	Model 24”	Model 32”
Paper Width Max	350 mm	610 mm	810 mm
Paper Thickness	100-500 gsm	100-500 gsm	100-500 gsm
Lamination Speed	Upto 20 mtrs / min	Upto 20 mtrs / min	Upto 20 mtrs / min
Air Pressure	8 Bar (Compressed)	8 Bar (Compressed)	8 Bar (Compressed)
Power	3.5 KW / 220 Volts / 50 Hz.	7 KW / 380 Volts / 50 Hz.	8 KW / 380 Volts / 50 Hz.
Net Weight	200 Kgs.	550 Kgs.	700 Kgs.
Dimensions (W x H x L)	935 x 2300 x 1500 mm	1600 x 2560 x 1820 mm	1850 x 2800 x 1820 mm

Note : Needs Compressed Air connection at the time of installation at customer end.

Hot & Cold Lamination Machine



“Memory” Hot & Cold Lamination machine suitable for sheet to sheet lamination

Salient Features:

- The uniquely designed Stopper Feeder device with the help of side gauge eliminates skilled operator requirement and ensures faster & easier feeding of paper for lamination.
- PLC control touch screen display, Digital temperature controller and variable speed AC drive ensures ease of operation for operator.
- The machine is suitable to use BOPP/PVC/Met-Pet/Thermal film for Hot & Cold Lamination.
- Two separate pressing stations for quick job changeovers from Thermal to Cold process or vice versa.
- Banana Roller for wrinkle removing from film roll,
- Large Diameter high precision mirror finished Chrome Roller, with Hydraulic Pressure, with built-in Oil Heating & Thermostatically Controlled Temperature ensures even heat across the cylinder thus results in high quality lamination in Thermal Process.
- Pneumatically controlled Pressure for Cold lamination process (0-8 Bar).
- Heavy Duty Rewinding Unit with Clutch Brake.
- Stainless Steel Glue Tray for cold glue with Worm Gear movement.

Optional :

- In-Line Divisional cutting device (Auto-Cut).
- Air Shaft for film loading.



Stopper Feeder Attachment

Technical Specifications	Model - 610	Model - 810
Paper Width Max	610 mm	810 mm
Paper Thickness	70-500 gsm	70-500 gsm
Lamination Speed Thermal	Upto 20 mtrs / min	Upto 20 mtrs / min
Lamination Speed Water Base	Upto 40 mtrs / min	Upto 20 mtrs / min
Air Pressure	8 Bar	8 Bar
Power	7 KW / 380 Volts / 50 Hz.	8 KW / 380 Volts / 50 Hz.
Net Weight	550 Kgs.	700 Kgs.
Dimensions (W x H x L)	1600 x 2560 x 1820 mm	1850 x 2800 x 1820 mm

Note : Needs Compressed Air connection at the time of installation at customer end.



Reel Rewinding Unit



PLC Touch Panel

Automatic Sheet Separator



A) "Memory" Sheet Separator machine is suitable for automatic separation of BOPP/PVC laminated rolls to sheets. Pneumatically controlled Tear off system ensures de-sheeting of laminated sheets at high speed.

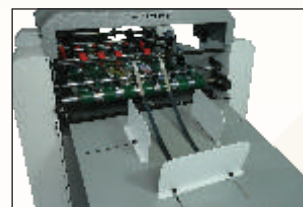
Salient Features:

- Suitable for BOPP/PVC films only
- Equipped with frequency controlled 2 HP AC Drive.
- Maximum sheeting speed 0-125 meters/minute
- Suitable to de-sheet Overlap/Underlap/Touch to Touch sheets.
- Unwinding station with Mechanical Brake.
- In-built Digital Sheet counter with photo electric sensor.
- Delivery station with adjustable stoppers for variable sizes.
- Stock Weight range 80-450 GSM.
- Maximum Width 800mm (32").

Optional: Rotatory Perforation System.

Technical Specifications	Model 800
Paper Width Max	800 mm
Paper Thickness	80-450 gsm
Max. Speed	Upto 125 mtrs / min
Air Pressure	8 Bar (Compressed)
Power	1.5 KW / 240 Volts / 50 Hz.
Net Weight	650 Kgs.
Dimensions (L x W x H)	3550 x 1575 x 1375 mm

Note : Needs Compressed Air connection at the time of installation at customer end.



Delivery Stacker



Control Panel



Reel Feeder

Board Knurling Machine



“Memory” Board Knurling Machine is specially designed to emboss different pattern on Paper & Board. Suitable for full sheet knurling / embossing / graining on printed sheet / after lamination / after UV Varnish / after Aqua Varnish.

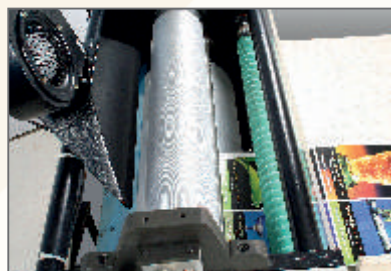
The machine is suitable for many applications like : Packing Boxes, Playing Cards, Book Covers, Greeting Cards, Gift Envelops, Calendar etc.

Salient Features:

- The solid Cast Iron body with powder coating ensures trouble - free & long working life.
- The machine is equipped with a high precision CNC laser engraved design roller, self manufactured Paper Bowl roller to emboss the substrate, so that the desired pattern appears.
- Manual Hydraulic Pressure with Japanese Hydraulic Cylinders, individual pressure control for either side to adjust design pressure as per requirement.
- Twin De-curling Rollers, Air Knife & bottom Wiper Unit to avoid paper sticking on the roller surface after embossing.
- Sheet counter with photo electric sensor, adjustable Paper Feeding & Delivery table.

Optional : Automatic Paper Feeder

Technical Specifications	Model - A	Model - B
Board Width Max.	700 mm	810 mm
Thickness (Min - Max)	90 - 500 gsm.	90 - 500 gsm.
Speed	25 mtrs / min	25 mtrs / min
Power	1.5 KW / 220 Volts / 50 Hz.	1.5 KW / 220 Volts / 50 Hz.
Dimension (L x W x H)	2500 x 1530 x 1200 mm	2700 x 1530 x 1200 mm
Net Weight	550 Kgs.	650 Kgs.



Design Roller



Control Panel



An ISO 9001 : 2008 Company



www.memoryrepro.com

Memory Repro Systems (P) Limited

Regd. Office : D-28, DSIDC Packaging Complex, Kirti Nagar, New Delhi-110015
Telephone : +91-11-41420960 / 70 / 80 E-mail : sales@memoryrepro.com

Works : Plot No. 7, Road No. 1A, Mundka Udyog Nagar, Rohtak Road,
Mundka, Delhi -110041
Telephone : +91-11-28345708, 28345709 E-mail : service@memoryrepro.com

Authorised Agent

