

DESIGN FEATURES

- Ten to one rangeability
- Heavy wall, precision bore, borosilicate glass metering tubes with contrasting background
- Scales printed on metering tubes or scales with conversion chart
- Tube sealed on compression gaskets by threaded seal
- Easy removable tubes without disconnecting the instrument
- Metal (Aluminum or SS) side plates
- Clear acrylic front and back (with safety glass option)
- Available in Flange (series 8000) and Screwed connections (series 9000)

DESCRIPTION

The CM series 8000 & 9000 flowmeters provide an economical means of on-line flow rate indication of various fluids. The instruments are ideal for process industry and also extensively used as master instrument for calibration of other flowmeters.

EQUIPMENT FEATURES

❖ **Inlet/Outlet** : Available in Flange or Screwed connections. Standard flowmeters have inlet from the bottom and outlet at the top.

Optional Elbow adapters on both sides are available for changing the directions of Inlet/Outlet in horizontal direction, in steps of 90° around vertical axis.

❖ **Connection** : Both Flange type and screwed type available.

Flange type: Standard flange connections available as per BS-10 (Table-D). Flanges as per ANSI (B 16.5), DIN 2632 (PN-10), IS 6392 (Table-8). Any other standard are available on request.

Screwed type: Standard Screwed connections available are BSP and NPT, both male or female.

❖ **Fitting & connection materials** : Standard flowmeters are made from SS 304. Option of SS 316 available.

❖ **Gland/O-rings** : Standard flowmeters come with Neoprene O-rings and gland packing. Options of Viton available.

❖ **Packing materials** : Depending on fluid PTFE, Viton, Neoprene or suitable materials used

❖ **Float Materials** : See capacity table below

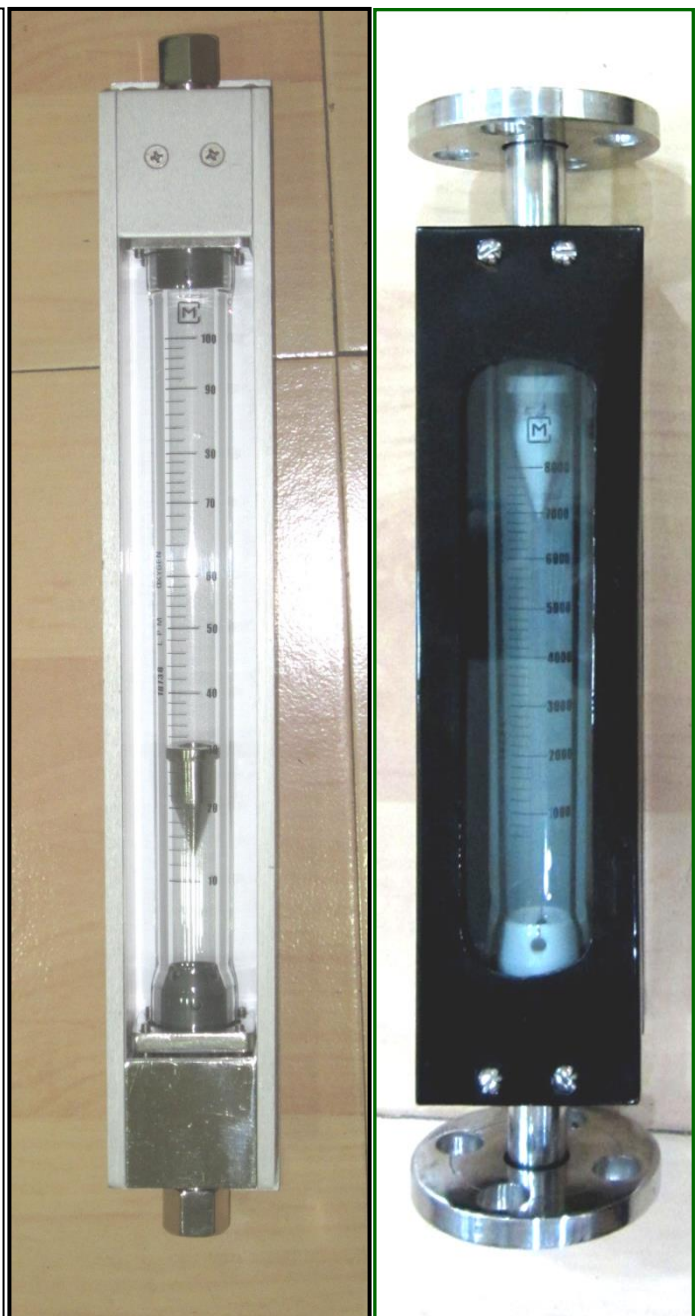
❖ **Float stop material**: Standard SS 304. Depending on fluid PTFE, PA, PVC or suitable materials used as per the flowrates or the fluid character. See "Capacity Table" below.

❖ **Wall mounting** : Wall mounting brackets can be provided as option.

❖ **Table model** : Selected ranges can be supplied with a base as table model for use in laboratory. **Please refer to separate catalogue for Table models (Series 6000-7000)**

❖ **Metering tube material** : Borosilicate glass-heavy wall.

❖ **Window**: Safety glass, acrylic window (standard).

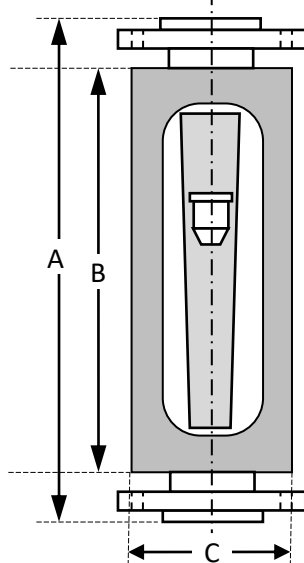


CM Flowmeters (India) Pvt., Ltd.

Plot-2, Phase-3, Kasba Industrial Estate, Kolkata-700107, India.

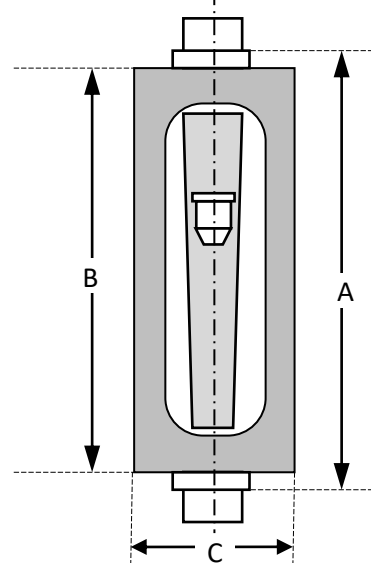
Ph: +91 33 2442 1456; email : sales@cmflowmeters.in; web: www.cmflowmeters.in

Overall dimensions-Flange type



Tube code (8000)	A	B	C
221-222, 321-324	450	324	90
381-382, 430, 490, 510	500	340	100
751-752	500	376	165

Overall dimensions-Screwed type



Tube code (9000)	A	B	C
221-222, 321-324	350	324	82
381-382, 430, 490, 510	366	340	92
751-752, 881-882	414	376	167

Standard connections:

Flange (8000)
BS-10-D
ANSI (B 16.5)
2632 (PN-10)
IS 6392 -8
Screwed (9000)
BSP
NPT

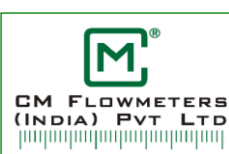
Calibration: We can provide calibration certificate (batch or individual) with national traceability with our flowmeters if required. We also provide calibration services and calibrate/ service flowmeters of any make.

Capacity table for flowmeter selection

Tube Code	Tube $\varnothing \times L$	Float Type					
		Aluminum Conical Hollow	SS-304/316 Conical Hollow	PVC/Teflon Conical Hollow	SS-304/316 Conical Solid	PVC/Teflon Conical – Filled Guided Float	
		Min- Max LPM Air	Min- Max LPM Air	Min- Max LPM Air	Min- Max LPH Water	Min- Max LPH Water	
221	2222300	1.5-15	3-30	1.5-15	6-60	4-40	
222	2222300	2-20	5-60	2-20	10-120	6-60	
321	3232300	2-20	5-60	2-20	10-120	6-60	
322	3232300	3-30	8-80	3-30	15-150	10-100	
323	3232300	4-40	10-100	4-40	20-200	15-150	
324	3232300	6-60	15-150	6-60	30-300	20-200	
381	3835300		40-400		Guided Float construction	80-800	50-500
382	3834300		50-500			100-1000	60-600
430	4336300		100-1000			200-2000	120-1200
490	4940300		150-1500			300-3000	200-2000
510	5140300		200-2000			400-4000	250-2500
751	7575350		300-3000			600-6000	350-3500
752	7575350		500-5000			1000-10000	600-6000
881	8888350		750-7500			1500-15000	900-9000
882	8888350		1250-12500			2500-25000	1500-15000

SPECIFICATION / ORDERING INFORMATION

Features	Options	Features	Options
Accuracy :	5% FS (standard), 2% FS optional	Mounting :	Online- direct, Table model, Wall mounting
Connections :	Flange BS-10-D (standard), see table above	Elbow adapter:	With or without (only for flange)
	10mm tube compression – FESTO Type	Gland packing options:	Neoprene (standard), Viton
	Barbed nipple for 6-40mm ID pipe	Body (wetted parts):	SS 314 (standard), SS 316
	NPT male or female, 1/8"-2".	Safety glass:	Safety glass, acrylic window (standard)
	BSP male or female, 1/8"-2".	Scale:	Printed on tube, mm scale with chart
Service:	Please indicate	Special requirements:	Logo, colour preference, etc.



CM Flowmeters (India) Pvt., Ltd.

Plot-2, Phase-3, Kasba Industrial Estate, Kolkata-700107, India.

Ph: +91 33 2442 1456; email : sales@cmflowmeters.in; web: www.cmflowmeters.in