



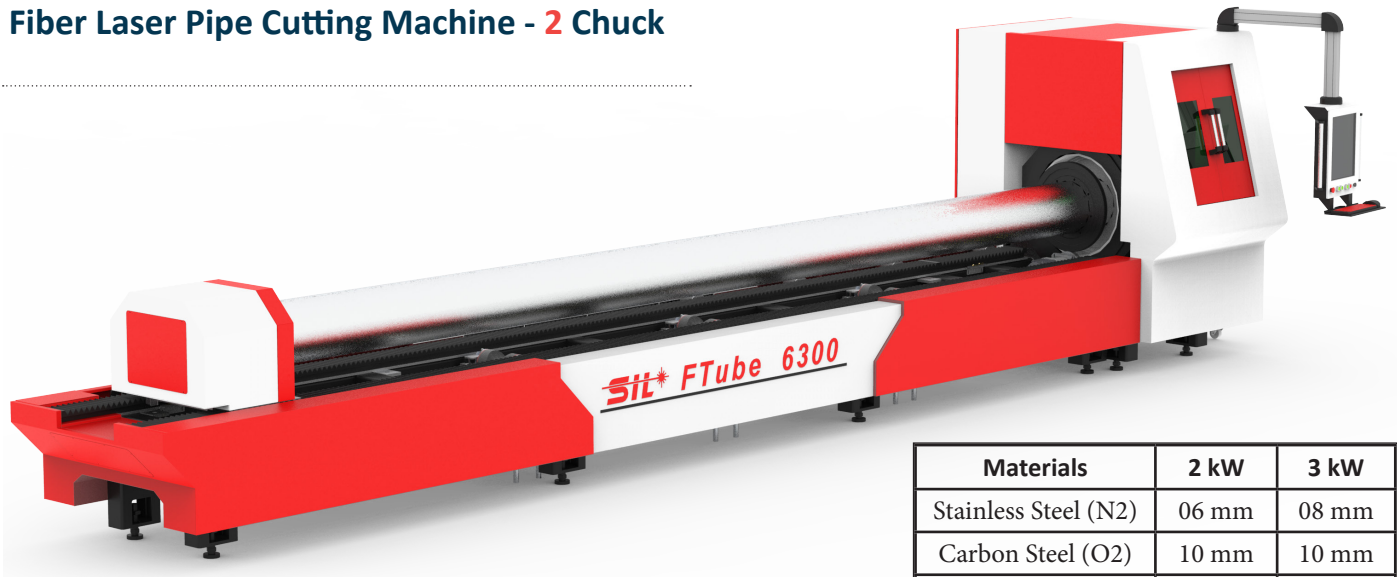
Laser Pipe Cutting

**PIPE CUTTING
SHEET CUTTING**

India's First Registered **Laser** Machine Manufacturer

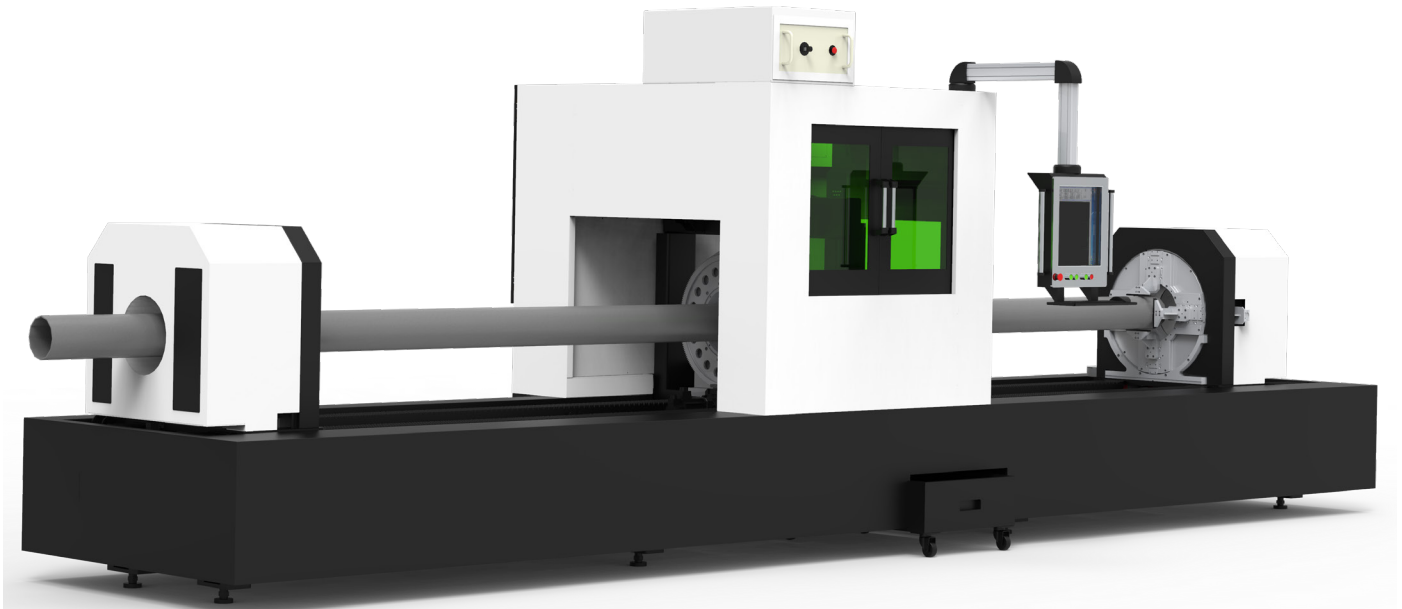
SIL[®]
expertise. innovation. excellence.

Fiber Laser Pipe Cutting Machine - 2 Chuck



Materials	2 kW	3 kW
Stainless Steel (N2)	06 mm	08 mm
Carbon Steel (O2)	10 mm	10 mm
Aluminum (N2)	06 mm	08 mm

Fiber Laser Pipe Cutting Machine - 3 Chuck



Features:

- Hollow Mid and Front Chucks.
- Auto clamping mechanism.
- Third Chuck Option of Hollow/Holding type.
- Depending on Chuck, pipe maximum diameter selection 300 mm, 200 mm, 120 mm.
- No waste of pipe can process full pipe in 3 Chuck.
- Tube cutting available in sizes of 3000/6000 length.

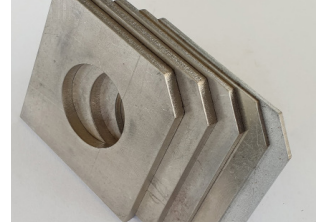
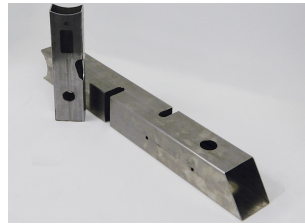
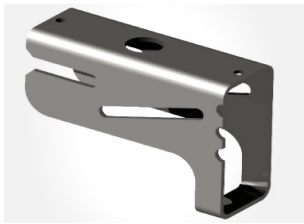
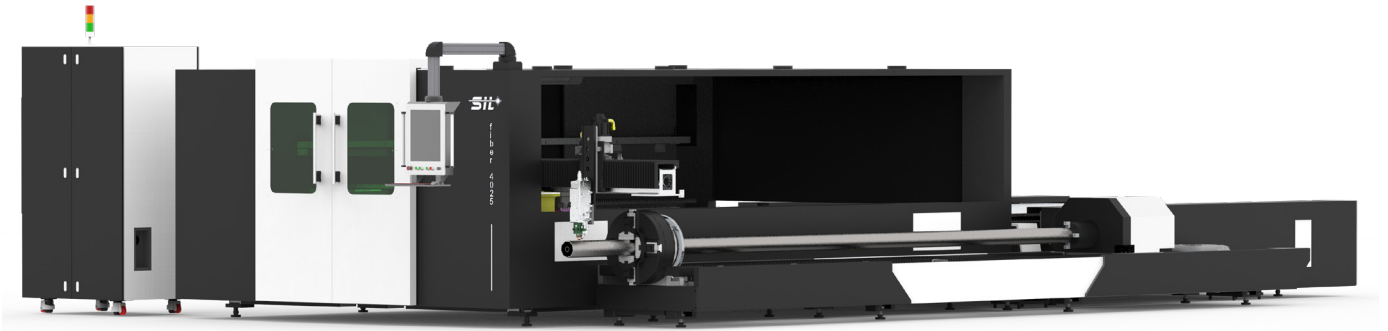
Shape Capabilities:

- Square
- Round
- Oval
- Peanut-shaped
- Angle iron
- D-shaped
- Hexagon
- Rectangle

Samples:

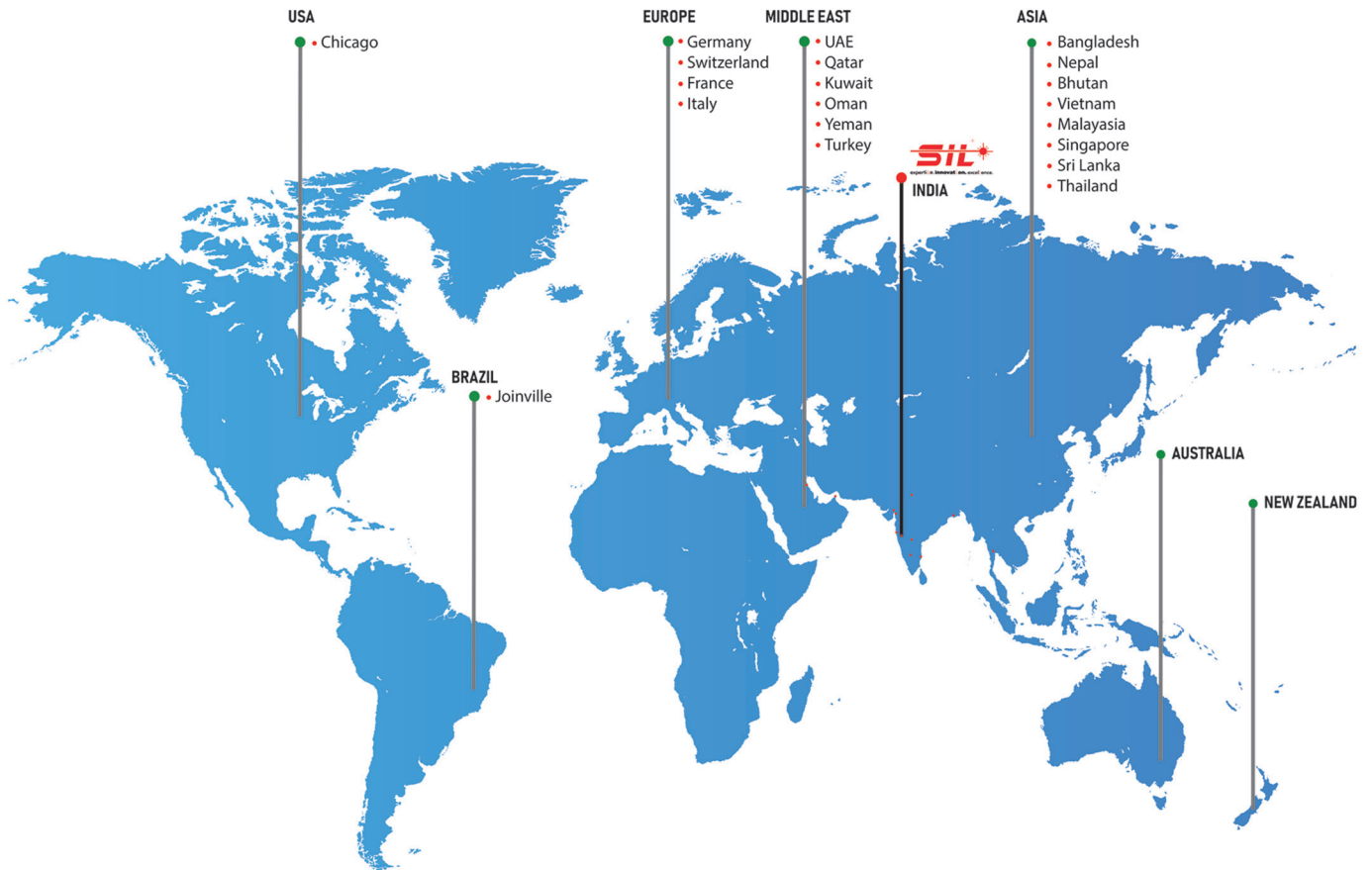


Fiber Laser Sheet - Pipe Cutting Machine



Items	Specifications
Laser Source	IPG / Raycus
Laser Power (Watt)	500 / 700 / 1000 / 1500
Maximum sheet size X, Y (mm)	3000*1500
Max Axis Travel X, Y, Z (mm)	1525*3050*150
Machine Weight	3500 kg
Laser Wavelength	1.08 um (Yb Fiber Laser Source)
Travel Method	X, Y, and Z - Axis movement for Cutting Head
Control Method	X, Y and Z (Simultaneous 3 - Axis Control)
Drive Motors	Yaskawa or Panasonic AC Servo Motors
Max. Axis Positioning Speed (X, Y)	80 m/min. per Axis (>120 m / min - 45 degree)
X, Y Axis Positioning Accuracy	0.03 mm
X, Y Axis Positioning Accuracy	0.03 mm
Power Supply	380/50 V/Hz, 3-Phase
Machine Control	FSCut
Display	Touch Screen Colour LCD

OUR GLOBAL REACH



Design & Specifications of machine will be subjective to change without prior notice

OUR PRODUCT RANGE:

Laser Metal Cutting Machine, Robotic Laser Metal Cutting & Welding Machine, Laser Metal Tube Cutting Machine, Laser Precision Cutting Machine, Laser Welding Machine, Laser Cleaning Machine, Laser Cladding Machine, Laser Marking Machine, Laser Engraving Machine, CNC Router Machine.

CORPORATE OFFICE

Plot No. 117 & 118, Lane - 7, Ramtekdi Industrial Area,
Hadapsar, Pune – 411013. Maharashtra. India.
Tel.: 020-26879001 / 2 / 3 | sales@silasers.com



silasers.com