

---

**Features**

---



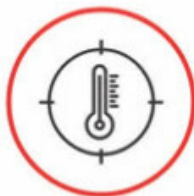
Each NeoDot can be worn for 1 to 2 days.



It is easy to stick and remove



Water Resistant



Gives 100% accurate detection.



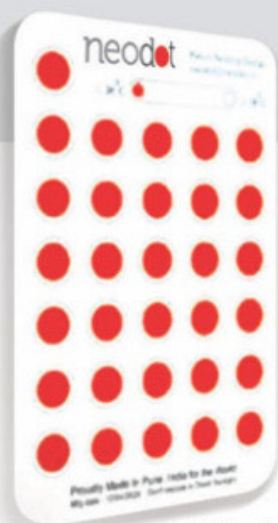
It's very affordable.



Suitable for all skin Type

The NeoDot is the need of the hour, as is extremely effective for round-the-clock screening of body temperature, in helping mitigate the risks of a viral infection from spreading.

So, come join the human-friendly revolution to save the world. The NeoDot is brought to you by a team of experienced professionals, with a slew of Global Awards and International patents in the medical care domain.



**neodot**

**The quick, accurate and safe temperature detection body patch.**

**Mfg. by neodes and Marketed by Critical Care Systems**

📍 323, Siddharth Tower, S. No. 12/3-b, Sangam Press Road, Behind City Pride Theater, Kothrud, Pune - 411038.

📞 + (91) 8087410031 / + (91) 9822209806 + (91) 9921865050

✉️ [criticalcaresystems@yahoo.com](mailto:criticalcaresystems@yahoo.com)



# **CRITICAL CARE SYSTEMS**

The COVID-19 pandemic has now made thermal screening imperative at Corporates and high foot fall areas. However, temperature screening using Infrared Thermometers has some serious challenges like:

1. It is a time-consuming exercise
2. It requires a good capital investment with ongoing maintenance
3. It results in serpentine queues. Moreover, if someone develops high temperature after he/she has entered the premises.

It is not feasible to detect that?

we bring you Neodot, a practical, inexpensive solution to counter all the above challenges.

## neodot

**A revolutionary non-invasive, no contact temperature patch, extremely easy to use.**

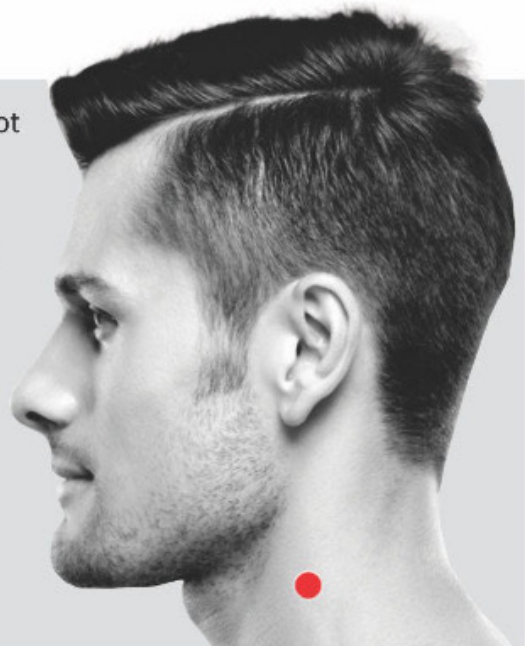


The NeoDot is small round red stick-on Bindi/Dot that's 1 cm in diameter.

Each NeoDot can be worn for 24 to 48 hours. It is easy to stick and remove, is water resistant and is 100% accurate in detecting if a person has fever. The NeoDot can be applied by simply peeling it off the strip and sticking it on your skin, usual in a visible area that's examined for fever. It's also very affordable.

**Detects Body Temperature in 2 sec**

**97°F**  **100°F**  **101°F**   
(Normal) (Fever)



**Mfg. by neodes and Marketed by Critical Care Systems**

📍 323, Siddharth Tower, S. No. 12/3-b, Sangam Press Road, Behind City Pride Theater, Kothrud, Pune - 411038.

📞 + (91) 8087410031 / + (91) 9822209806 / + (91) 9921865050

✉ criticalcaresystems@yahoo.com

