



KONICA MINOLTA

SUPERIOR IN
FUNCTION
SMART IN
OPERATION



Giving Shape to Ideas

bh367 36 ppm	bh287 28 ppm	bh227 22 ppm
PRINT	SCAN TO USB	COPY
USB Print	Colour Internet Fax	Fax
MOBILE SUPPORT	AirPrint	Google Cloud Print Ready
mopria	KMPS	INFO-Palette
Biometric Authentication	IC-Card Authentication	Emperon Driven!
Bioplastic	Recycled PC/ABS	PageScope Mobile

Simitri
with Biomass

A3 B&W Multifunctional Printer

bizhub
367/287/227

The simplicity and usability to fit in any working environment

The product design

The bizhub 367 series adopts easy and intuitive INFO-Palette design with smart user interface. You get the same user experience through seamless operation across the PCs, tablets or smartphones



Lighter and compact MFP body

The newly developed MFP main body offers compact and lightweight body so as to fit almost in any type of working space.

New 7 inch operation panel

The new 7 inch operation panel provides best in class multi-touch sensitivity, user friendly interface and intuitive operability. User can register up to 9 functions with the combination of hard and soft menu keys mounted on the panel. The screen display function can be enlarged and screen display colour can be reversed for ease of use.



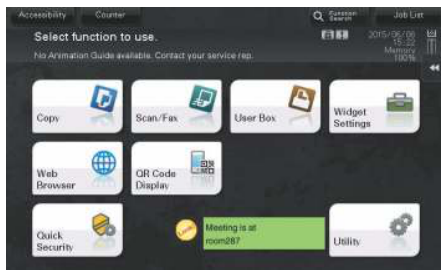
Hard registration keys
Register up to 4 commonly used function.

Soft menu keys
Register up to 5 commonly used function.

Soft menu keys will appear by tapping on the screen tab.

Widgets function

The new bizhub 367 series comes with embedded widget application where users can install and execute within the MFP operation panel. Text boxes, icons or GIF animations can be configured and used for internal communication, messages and rules.



Print from anywhere, anytime with the most advanced wireless, mobile and cloud technology

The Mobile Touch Area

The operation panel is equipped with newly embedded Mobile Touch Area to support NFC (Near Field Communication) connection for Android¹ devices. Pairing can be performed, through PageScope Mobile (PSM), by touching the area with Android device. First select the files on PSM and then touch the device to the operation panel to perform print² or scan².



¹ NFC connection requires Android OS 4.4 or higher to be installed.

² Wireless LAN environment is required to perform touch to print and scan.

To connect with iOS devices

For the iOS devices, you can search and register nearby bizhub into the PageScope Mobile (PSM)³ via Bluetooth LE (BLE)⁴ technology. iOS devices can also be used to log-into bizhub via BLE connection. Selected files on PSM can be printed⁵ directly or scan⁵ files to iOS devices.

³ PageScope Mobile for iPhone / iPad version 5.0 or higher is required.

⁴ Optional Device Connection I/F Kit EK-609 is required.

⁵ Wireless LAN environment is required to perform print and scan.

Wireless LAN (AP mode) support

Make your bizhub wireless LAN Access Point⁶ to wirelessly connect mobile devices. Devices thus will not only able to connect directly with bizhub but are also securely separated from existing LANs.

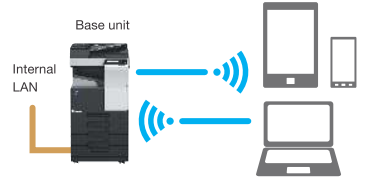
PageScope Mobile³ will enable more convenience as wireless set up can be completed between a mobile device and bizhub by reading the QR code that is displayed on the machine panel.

⁶ Optional Upgrade Kit UK-212 and Device Connection I/F Kit EK-608 or EK-609 are required.

QR code display screen



Wireless LAN (AP mode) connection image



¹In AP mode (base unit), simultaneous connections can be made with up to 5 devices.

Standard web browser

The multi-touch UI in the operational panel can be used to display and print webpage contents. Printing of portions of PDF files or maps directly from the websites are more convenient now.

To connect instantly without print drivers to the industry standard mobile technologies

AirPrint

Apple's standard printing system is compatible with iOS 4.2 and Mac OS 10.7 or later. A compatible printer on your wireless LAN can be used.



Mopria Print Service

Wireless printing technology established by Mopria Alliance. It allows you to print from devices installed with Android 4.4 or later.



Google Cloud Print

A cloud print service provided by Google. You can print from any location via the internet regardless of OS or device type.

^{*} Google Cloud Print Setup and Google account registration are required.

^{*} Optional Upgrade Kit UK-211 is required.



Konica Minolta Print Service

Print directly to bizhub via a wireless LAN from all apps that supports Android's print function.



PageScope Mobile

Konica Minolta's proprietary mobile print application allows usage of wide range of bizhub functions such as duplex print, security print, staple and punch.



Flexible and advanced security features to protect valuable information

Authentication on the MFP main unit

User can perform authentication directly on the main unit. Access control can be set up for functions like print, scan, copy and fax¹

¹ FAX feature requires optional FAX Kit FK-513 and HDD will be needed if MFP does not equip the HDD as standard.

IC card authentication

Users can authenticate² with various types of IC card³. The authentication method complies with SSFC (Shared Security Formats Cooperation). Besides the IC Card, users can authenticate with Android devices⁴ with equipped NFC antenna.



² Optional Authentication Unit AU-201S and Device Connection I/F Kit EK-608 or EK-609 are required.

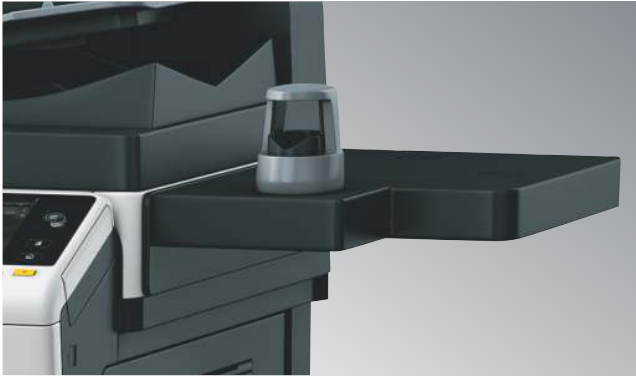
³ Compliant non-contact IC cards include FeliCa (IDm), SSFC, FCF, FCF (campus), FeliCa Private, and MIFARE (UID).

⁴ Requires Android 4.4 or later that supports HCE (Host Card Emulation) or PageScope Mobile for Android v4.1 or later.

Biometric authentication

Scans the veins on the finger as the biometric data which offers very high-level security and is easy to implement.

*Optional Biometric Authentication Unit AU-102, Working Table WT-506 and Device Connection I/F Kit EK-608 or EK-609 are required.



TPM (Trusted Platform Module)

TPM (Trusted Platform Module) is a security chip which encrypts and decrypts confidential data. The information is encrypted and stored in dedicated storage area in the chip to avoid unauthorized reading.

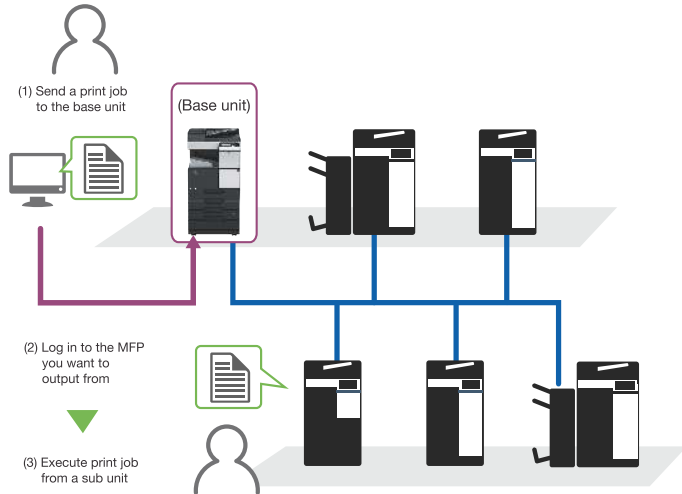
*Optional i-Option LK-115 v2 is required.

Server-less pull printing

With server-less pull printing, print jobs sent by user can be printed from any MFP in the same network.

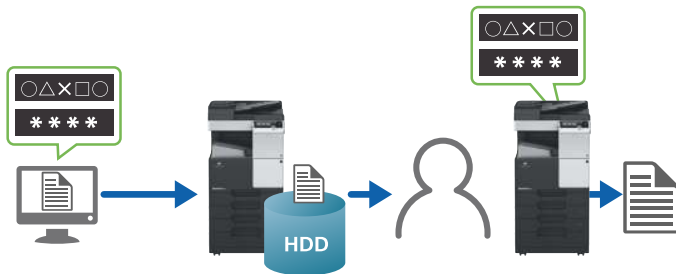
*A pull printing system consisting of a maximum of 10 MFPs can be created. It is necessary that all corresponding MFPs be in the same network.

*Optional i-Option LK-114 and Upgrade Kit UK-211 are required to be installed to each of the MFP.



ID & Print

To restrict the outputs to specific user or print confidential documents, user can set a password before executing the print. The print data will be stored in the HDD of the MFP and will not be printed until the same password is entered on the MFP.

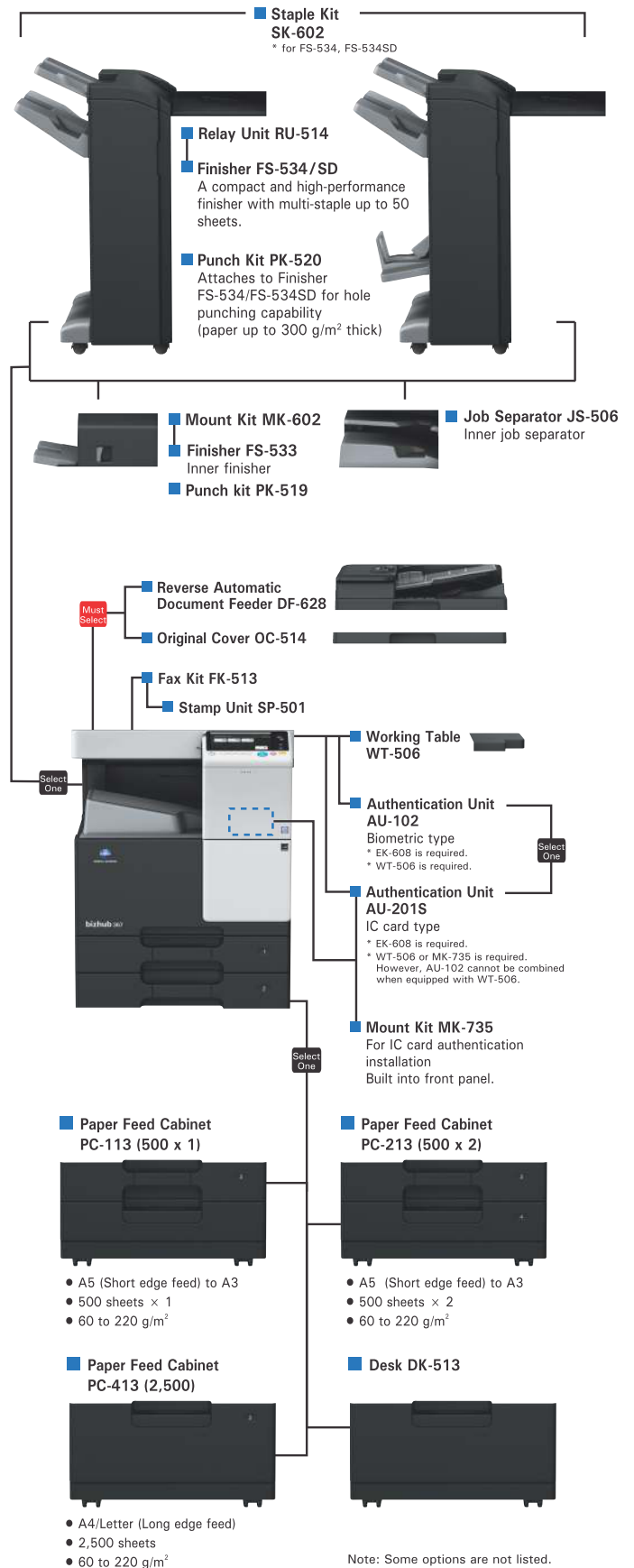


Top class power consumption and TEC value in its class

The MFP's CPU power is set to turn off during sleep mode. This results in a best-in-class 0.5 W power consumption ratio (during sleep mode). The TEC value has also been reduced approximately by 32-55%.

SYSTEM

- Upgrade kit UK-211
2 GB memory
- Upgrade kit UK-212
Wireless LAN kit
* EK-608 or EK-609 is required.
- Device Connection I/F Kit EK-608
USB hub kit / Voice guidance
- Device Connection I/F Kit EK-609
Bluetooth LE / Voice guidance
- bizhub Connector S-1/G-1/E-1
- Keypad KP-101



Select One One of the options may be selected (not mandatory)

Must Select One of the options must be selected (mandatory)

Note: Some options are not listed.

Specifications

bizhub 367/287/227 Printer Specifications

	bizhub 367	bizhub 287	bizhub 227
Type	Embedded		
CPU	ARM Cortex-A7 Dual-core 1.2GHz		
Memory Capacity (Std./Max.)	2 GB/4 GB		
Print Speed	36 ppm	28 ppm	22 ppm
HDD	250 GB (Optional, Shared with the copier)		
Print Resolution	1,800 dpi (equivalent) x 600 dpi		
PDL	PCL 6, PostScript 3 Emulation, XPS		
Protocol	TCP/IP, IPX/SPX (ND5 support), SMB (NetBEUI), LPD, IPP1.1, SNMP, AppleTalk		
Support OS	Windows Vista ^{*1} / 7 ^{*1} / 8 ^{*1} / 8.1 ^{*1} / 10 ^{*1} Windows Server 2008 ^{*1} / 2008 R2 / 2012 / 2012 R2 Mac OS X (10.6 / 10.7 / 10.8 / 10.9 / 10.10 / 10.11) Linux		
Fonts	PCL	80 Roman fonts	
	PS	137 Roman Type1 fonts	
Interface	Ethernet (10BASE-T/100BASE-TX/1000BASE-T), USB 1.1, USB 2.0, IEEE 802.11 b/g/n ^{*2}		

*1 Supports the 32-bit (x86) or 64-bit (x64) environment.

*2 Optional

Scanner Specifications

Type	Full-Colour Scanner	
Interface	Ethernet (10BASE-T/100BASE-TX/1000BASE-T), IEEE 802.11 b/g/n ^{*1}	
Driver	TWAIN Driver, HDD TWAIN Driver	
Protocol	TCP/IP (FTP, SMB, SMTP, WebDAV) (IPv4/IPv6)	
Scanning Speed (Colour/B&W) (300 dpi, A4, Simplex)	45 opm ^{*2}	
Scanning Size	Max. A3 (11" x 17")	
Output Format	TIFF, JPEG, PDF, Compact PDF, XPS, Compact XPS, OOXML (pptx, xlsx [*] , docx [*]), Searchable PDF ^{*3} , PDF/A [*] , Linearised PDF ^{*4}	
Scanning Resolution	Push	200 dpi / 300 dpi / 400 dpi / 600 dpi
	Pull	100 dpi / 200 dpi / 300 dpi / 400 dpi / 600 dpi
Main Functions	Scan to E-Mail, Scan to FTP, Scan to BOX (HDD), Scan to PC (SMB), Network TWAIN, Scan to WebDAV, Scan to USB, Scan to Scan Server, Scan to Web Service (WSD-Scan), Device Profile for Web Services (DPWS)	
Other Functions	Multi-Method Send, Authentication at the time of E-Mail send (SMTP authentication, POP before SMTP), S/MIME, Annotation	

*1 Optional

*2 When using the Reverse Automatic Document Feeder DF-628.

Copier / General Specifications

Type	Desktop Monochrome A3 Multifunctional Printer		
Copy Resolution	Scan	Main: 600 dpi x Sub: 600 dpi	
	Print	1,800 dpi (equivalent) x 600 dpi	
Gradation	256		
Memory Capacity (Std./Max.)	2 GB/4 GB		
HDD	250 GB (optional)		
Original Type	Sheets, Books, Objects		
Max. Original Size	A3 (11" x 17")		
Output Size	Main unit: A3 to A5, 11" x 17" to 8-1/2" x 11", 5-1/2" x 8-1/2", 8" x 13", 16K, 8K Bypass Tray: A3 to A5, B6 ³ , A6 ³ , 11" x 17" to 5-1/2" x 8-1/2", 8" x 13", 16K, 8K, Postcard (A6 (4" x 6" Card)), Envelope ³ , Label sheet, Tab paper		
Warm-Up Time ^{*1} (23°C, std. voltage)	20 sec. or less		
* The time required to start printing when both the main power and sub-power switches are turned from OFF to ON.			
* The time required to start printing when the main power switch is ON and the sub-power switch is turned from OFF to ON.			
First Copy Out Time ^{*5}	4.5 sec. or less	5.3 sec. or less	
Copy Speed (A4)	36 ppm	28 ppm	22 ppm
Copy Magnification	Fixed Same Magnification	1: 1±0.5% or less	
	Scaling Up	1: 1.154/1.224/1.414/2.000	
	Scaling Down	1: 0.866/0.816/0.707/0.500	
	Preset	3 types	
	Zoom	25 to 400% (in 0.1% increments)	
	Lengthwise Crosswise Individual Settings	25 to 400% (in 0.1% increments)	
Paper Capacity (80 g/m ²)	Tray 1	500 sheets (up to B4)	
	Tray 2	500 sheets (up to A3)	
	Multiple Bypass Tray	100 sheets (up to A3)	
Max. Paper Capacity (80 g/m ²) ^{*6}	3,600 sheets		
Paper Weight	Tray 1 / 2	60 to 220 g/m ²	
	Multiple Bypass Tray	60 to 220 g/m ²	
Multiple Copy	1 to 9,999 sheets		
Auto Duplex	Paper Size	A3 to A5 ² , B5 ² , 11" x 17" ² to 5-1/2" x 8-1/2" ² , 7-1/4" x 10-1/2", 8" x 13" ² , 16K, 8K ²	
	Paper Weight	60 to 209 g/m ²	

Power Requirements	AC230 V 7 A (50 to 60 Hz)
Max. Power Consumption	1.5 kW or less
Dimensions [W] x [D] x [H]	585 x 660 x 735 mm (23-1/16" x 26" x 28-15/16")
Weight	Approx. 56.5 kg (124-1/2 lb)
Space Requirements [W] x [D] ^{*8}	899 x 1,172 mm (35-1/2" x 46-1/4")

*1 There are six types of footcups: 8-1/2" x 13-1/2", 220 mm x 330 mm², 8-1/2" x 13", 8-1/4" x 13", 8-1/8" x 13-1/4", and 8" x 13". Any one of these sizes is selectable. For details, contact your service representative.


*2 Short edge feed 

*3 Wrinkles or printing errors may occur due to the type, storage or environment that exists when envelope printing is carried out.

*4 May vary depending on the operating environment and usage.

*5 A4 long edge feed full size/using the first tray/scanning from the original glass surface.

*6 With options installed.

*7 Long edge feed 

*8 Without options, with paper trays pulled out and multiple bypass tray opened.

Internet Fax

Protocol	TX: SMTP RX: POP3, TCP/IP Simple mode
Connection Mode	Full-Mode
Sending Paper Size	A3, B4, A4
Recording Paper Size	Max. A3
Resolution	B/W: 200 x 100 dpi, 200 x 200 dpi, 400 x 400 dpi, 600 x 600 dpi Colour: 200 x 200 dpi, 400 x 400 dpi, 600 x 600 dpi
Interface	Ethernet (10BASE-T/100BASE-TX/1000BASE-T)
Colour	Support Colour Internet Fax
Format	B/W: TIFF-F Colour: TIFF (Conforms to RFC3949 Profile-C)

Fax Kit FK-513 (Optional)

*Optional HDD will be needed if MFP does not equip the HDD as standard.

Communication	Super G3
Compatible Lines	Public Switch Telephone Network, Private Branch Exchange, Fax Communication Line
Line Density	Ultra Fine: 600 dpi 600 dpi Super Fine: 16 dot/mm 15.4 line/mm, 400 dpi 400 dpi Fine: 8 dot/mm 7.7 line/mm, 200 dpi 200 dpi Normal: 8 dot/mm 3.85 line/mm
Modem Speed	2.4 to 33.6 kbps
Compression	MH/MR/MMR/JBIG
Sending Paper Size	Max. A3 (Long Length Support: Max. 1,000 mm)
Recording Paper Size	Max. A3 (Long Length Max. 1,000 mm following the page division)
Transmission Speed	Less than 2 sec. (A4, V34, 33.6 kbps, JBIG)
Memory	Shared with the copier
Number of Abbr. Dials	2,000
Number of Program Dials	400
Number of Group Dials	100
Sequential Multiple Station Transmission	Max. 600

IP Address Fax

*Optional Fax Kit FK-513 is required.

Protocol/Transmission	TCP/IP SMTP
Sending Paper Size	A3, B4, A4
Resolution	200 x 200 dpi, 400 x 400 dpi, 600 x 600 dpi
Format	B/W: TIFF-F, TIFF-S Colour: TIFF, PDF

Reverse Automatic Document Feeder DF-628 (Optional)

Type	Circulatory duplex system		
Support Paper Size	Max. A3 (Fax mode: Max. 1,000 mm)		
Mixed Size	Support		
Original Set	Centre guide		
Support Paper Weight	Simplex: 35 to 128 g/m ² Duplex/Mixed Original: 50 to 128 g/m ²		
Paper Capacity	Max. 130 sheets (68 g/m ²)		
Productivity	Simplex	Colour/B&W: 45 opm (300 dpi), 36 opm (600 dpi)	
	Duplex	Colour/B&W: 22 opm (300 dpi), 17 opm (600 dpi)	
Power Requirements	Supplied from the MFP main body		
Dimensions [W] x [D] x [H]	585 x 504 x 127 mm (23" x 19-3/4" x 5")		
Weight	Approx. 9 kg (19-3/4 lb)		

Job Separator JS-506 (Optional)

Support Paper Type (Weight)	Tray 1	Plain paper (60 to 90 g/m ²), Thick paper (91 to 220 g/m ²), Transparency, Envelope, Label sheet
	Tray 2	Plain paper (60 to 90 g/m ²), Thick paper (91 to 220 g/m ²), Transparency, Envelope, Label sheet
Support Paper Size	A3 to A5, B6 ¹ , A6 ¹ , 11" x 17" to 5-1/2" x 8-1/2", 16K, 8K, Postcard (A6 (4" x 6" Card))	
Stacking Capacity	Tray 1	100 sheets (60 to 90 g/m ²)
	Tray 2	150 sheets (60 to 90 g/m ²)
Power Requirements	Supplied from MFP main body	
Max. Power Consumption	24 W or less	
Dimensions [W] x [D] x [H]	451 x 469 x 227mm (17-3/4" x 18-1/2" x 9")	
Weight	Approx. 1.5 kg (3-1/4 lb)	

*1 Short edge feed 

For more information please visit the bizhub Web site at
http://www.biz.konicaminolta.com/bw/367_287_227

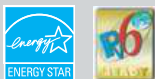
Product Appearance, Configuration And/or Specifications Are Subject To Change Without Notice.

KONICA MINOLTA, the KONICA MINOLTA logo and symbol mark, "Giving Shape to Ideas", bizhub, bizhub PRO, bizhub PRESS, magicolor, PagePro, PageScope, Simitri, Simitri HD, Simitri HD+, Simitri with Biomass, Emperon, S.E.A.D., S.E.A.D.II, Printgroove and Konica Minolta Optimised Print Services and their respective logos are registered trademarks or trademarks of KONICA MINOLTA, INC. Evernote is a registered trademark or trademark of Evernote Corporation. SharePoint is a registered trademark or trademark of Microsoft Corporation in the U.S. and other countries. All other brands and product names are registered trademarks or trademarks of their respective companies or organisations.

Ecology & Environment

KONICA MINOLTA products are designed with the environment in mind.

- Energy Star
- RoHS Compliance
- WEEE Compliance
- Eco-friendly Toners



REQUIREMENTS FOR SAFE USE

- Please read and follow the instruction manual to ensure safe operation.
 - Only operate using appropriate power supply and voltage.
- Connecting the earth wire to an inappropriate place may cause explosion or electric shock. Please connect accordingly.

For more information: SMS "KM OFFICE" send to 52424 or Call: 1-800-266-2525
Konica Minolta Business Solutions India Pvt. Ltd. : 10th Floor, Building No.8, Tower C,
 DLF Cyber City, Phase II Gurgaon, Haryana - 122002, India. Board No. +91-124 6652000.
 URL: www.konicaminolta.in, marcom@bin.konicaminolta.in | Konica Minolta Inc., Tokyo, Japan.

Connect with us:



Contact Point: