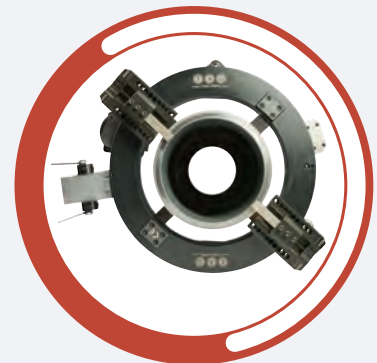
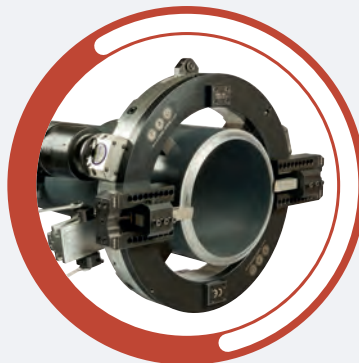
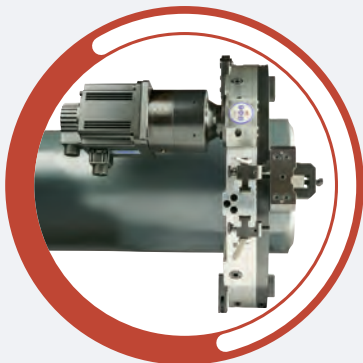




PIPE EQUIPMENT SPECIALISTS LTD

# SPLIT FRAME CLAMSHELL COLD CUTTING AND BEVELLING MACHINES 1" to 54"



[www.TAG-PIPE.COM](http://www.TAG-PIPE.COM)

Copyright © 2017 TAG PIPE EQUIPMENT SPECIALISTS LTD. All rights reserved.

Tel: +44 (0)1869 324 144  
E-mail: [sales@tag-pipe.com](mailto:sales@tag-pipe.com)

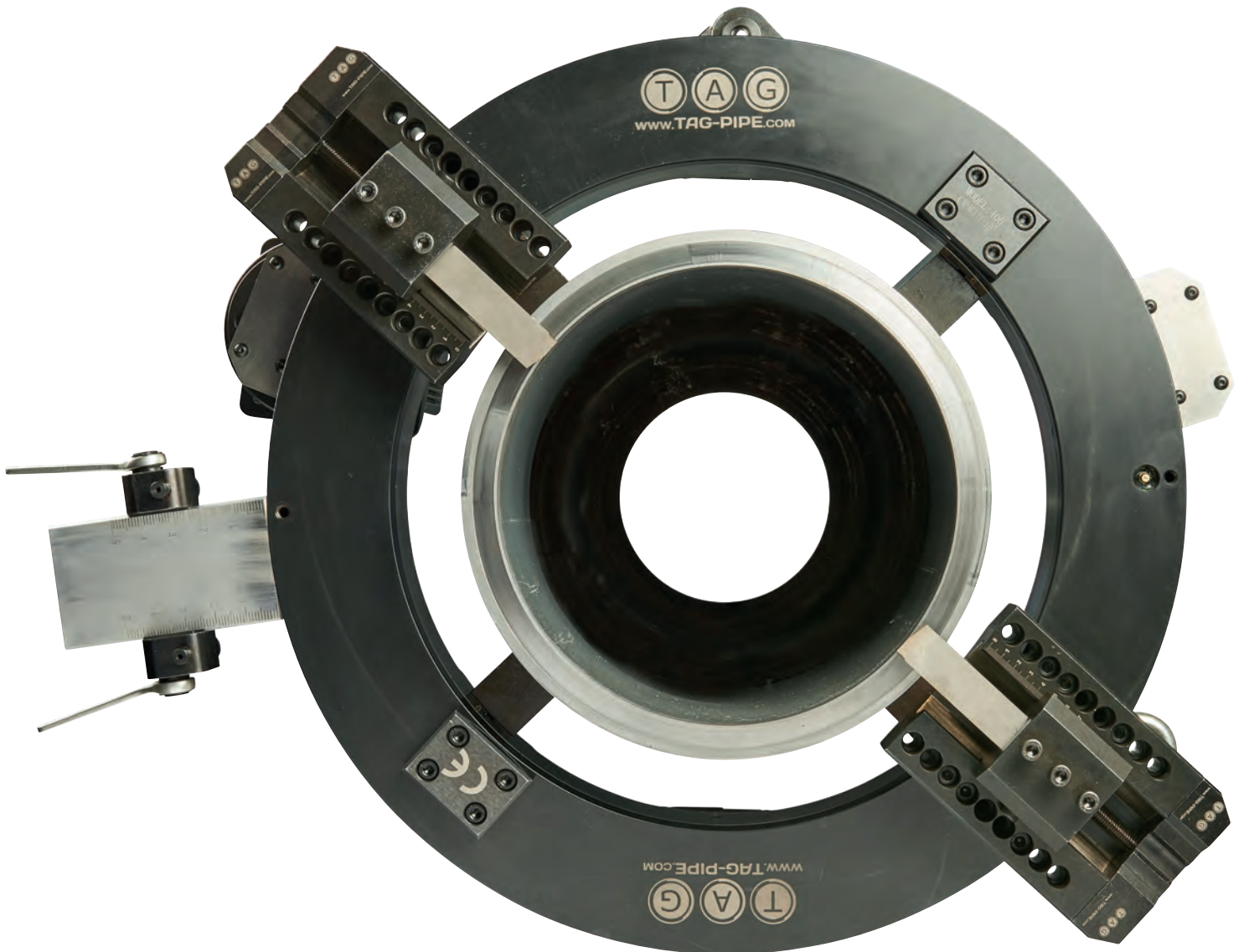


# ALUMINIUM LIGHTWEIGHT SPLIT FRAME CLAMSHELLS

*Portable O/D Locking Cold Pipe Cutting and Bevelling Machines*

**RANGE: 1 to 54" o/d (25 - 1372mm)**

- **Functions:** External Bevelling  
Internal Bevelling  
Counter-boring  
Compound Bevels
- **Materials:** Any kind of Steel and Exotic Alloy
- **Power:** Pneumatic  
Electric (110v or 220v)  
Hydraulic  
NEW Electric NC Servo Motor (Patent Pending)



[www.TAG-PIPE.COM](http://www.TAG-PIPE.COM)

Copyright © 2017 TAG PIPE EQUIPMENT SPECIALISTS LTD. All rights reserved.

Tel: +44 (0)1869 324 144  
E-mail: [sales@tag-pipe.com](mailto:sales@tag-pipe.com)



## THE BASICS

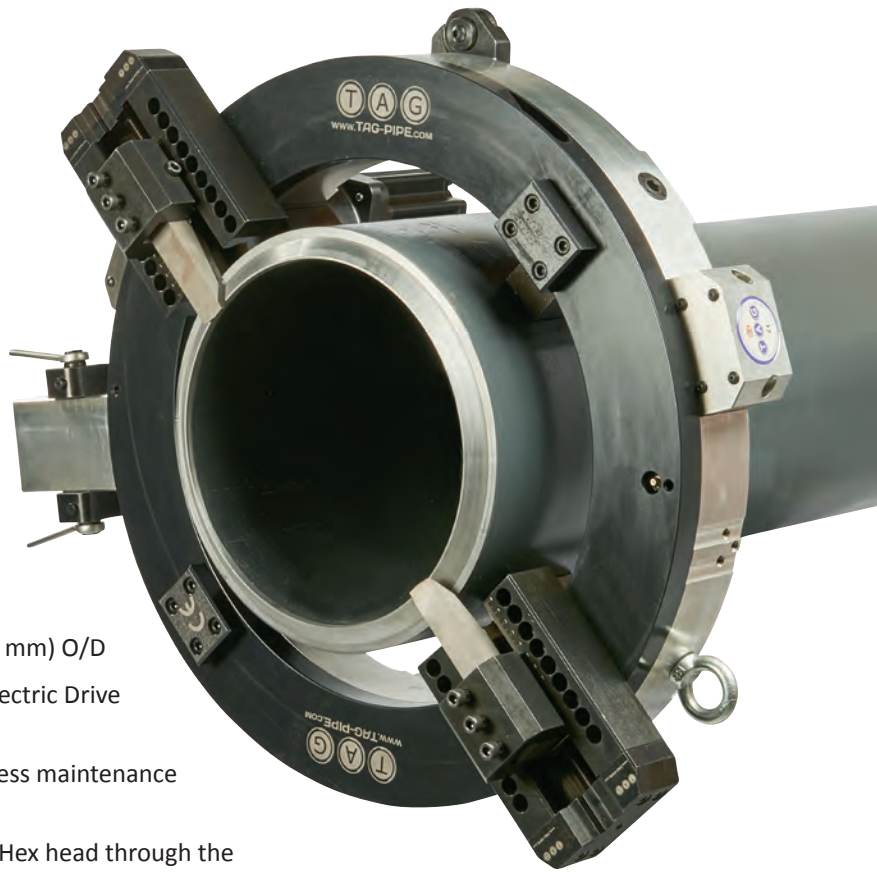
TAG's new range of Split Frame Clamshells are essentially portable lathes.

Offering the versatility to cut and Bevel (simultaneously if required), Face, counterbore and O/D machine pipes (and vessels) of almost any diameter.

A light weight aluminium body, encases a steel inner ring gear running on solid bearings, ensuring manageability, yet extreme strength and durability.

Coupled with wide, hardened clamping feet, with easy read rule marks, enable rapid, repeatable concentric setup, even on out of round pipes and joints.

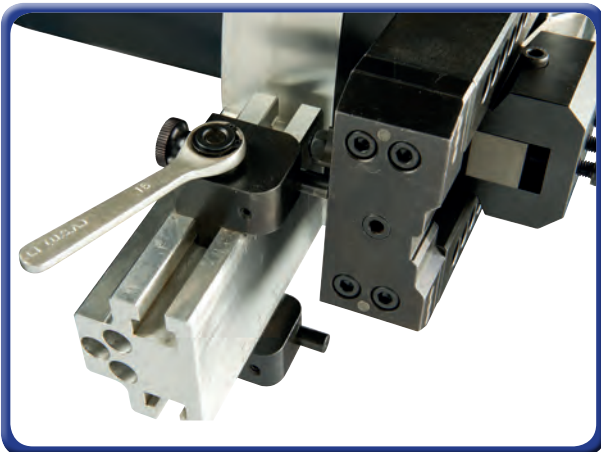
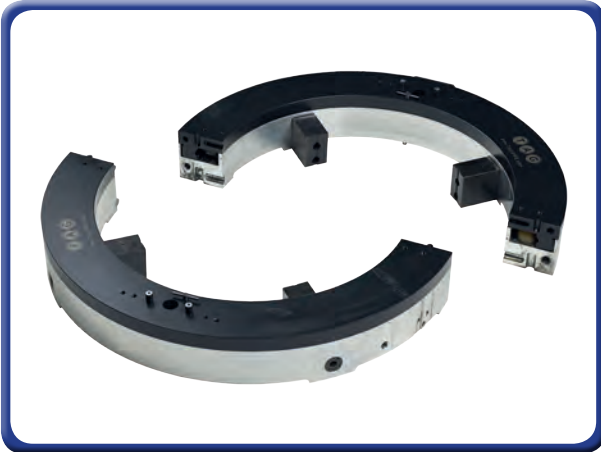
A range of tooling, power units and accessories allow you to tailor your machine to your particular job.



## FEATURES & ADVANTAGES

- 11 models cover a range from 1" (25.4 mm) to 54" (1372 mm) O/D
- Pneumatic, Hydraulic, standard electric and NC SERVO Electric Drive options provide increased versatility
- Adjustable heavy duty bearings, combined with easy access maintenance points allow inspection and adjustment
- Clamping Feet are quickly and easily adjusted via a flush Hex head through the outer ring. Feet feature easy read measure marks for rapid setup & adjustment
- TAG clamshells accept a wide range of accessories to increase performance and expand machine capabilities
- Unique 'TAG transmission' tool slides with changeable gears for adjustable Radial tool feed

## QUICK SPLIT FRAME DESIGN



## DRIVE UNITS

To meet the varying needs of job-sites worldwide, TAG's Clamshell Motors and Drives are available in a range of configurations.

Drive motors are available in hydraulic, pneumatic and electric configurations. Motor mounting flanges are available in straight back (in-line), right angle and front drive reversible options.



## TAG'S ELECTRIC NC SERVO DRIVE MOTOR

TAG's single phase Electric NC (Numerically Contolled) servo motor offers a new level of performance and capacity for electric drive power of TAG's Split Frame range.

A 1.5 Kilowatt servo motor, which, like a 3 phase motor, or Hydraulic drive, does not slow and strain under load. The servo motor, is controlled by a wired, or wireless, delta touch screen NC control unit, enabling accurate, infinite RPM control.

If you carry out the same job regularly with the machine, once you find the optimum performance setting and values, these can be set into the NC control unit and recalled in the future.

Available in single for up to 30mm thickness or double for 30mm+.



## TAG HYDRAULIC POWER PACK

TAG offer a custom built Hydraulic Power Pack with all the power needed to cut and bevel all thicknesses and materials of pipe when used with TAG split Frame Clamshells.

### SPECIFICATION:

- RATED PRESSURE: 16MPa
- RATED FLOW: 25 l/min
- HYDRAULIC MOTOR POWER: 200 r/min
- HYDRAULIC MOTOR TORQUE: 260 N.M.
- ELECTRIC POWER: 7.5KW
- ELECTRIC MOTOR RATE: 1450 r/min
- TIMING RANGE: 0-20 r/min
- SHIPPING WEIGHT: 300kg



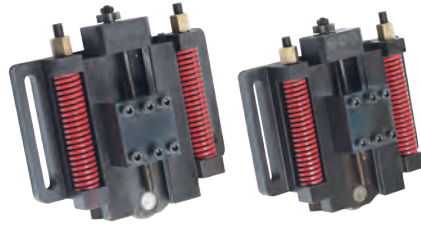
## TAG TRANSMISSION TOOL SLIDE RANGE

The tool slides are available in various configurations to accept the full range of TAG tooling.



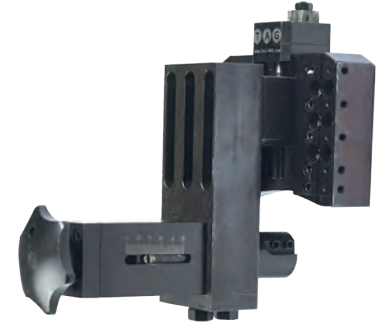
### Standard

Low profile, high tweight, for tight access situations. Utilising standard TAG HSs Co Blade tooling. **For Cutting & Beveling all materials up to 120mm wall thickness.**



### Spring Loaded O/D Tracking

A bearing wheel housed in the tool slide, is compressed to the O/D of the Pipe by 2 x 150lb springs, ensuring an even, accurate weld prep and root face, by tracking the O/D contour of the pipe especially advantageous for large diameters and heavier wall thicknesses. **For Cutting & Beveling of all materials of up to 120mm wall thickness.**



### Counterbore Tool Slide

The counterboreslide module accessory bolts directly to the standard tool slide and can be installed immediately upon completion of the cut & external Bevel, to remove any internal inconsistencies prior to welding. The counterbore tool slide module is available in a range of travel lengths.

## TOOLING

TAG's Hss Co range of tooling includes sever, bevel, double-bevel, compound bevel and counter bore tools. TAG tooling is available in a range of different lengths and sizes, to match tooling with application precisely.

We also offer custom designed tooling, special tool steel, and inserts for applications not covered by our standard range.



Model	Size Range (inch)	Working Range O.D. (mm)
TSFC6	1 - 6"	25 - 168mm
TSFC8	2 - 8"	50 - 219mm
TSFC12	6 - 12"	168 - 323mm
TSFC16	10 - 16"	254 - 406mm
TSFC18	12 - 18"	323 - 457mm
TSFC20	14 - 20"	355 - 508mm
TSFC24	18 - 24"	457 - 610mm
TSFC30	24 - 30"	610 - 762mm
TSFC36	30 - 36"	762 - 914mm
TSFC42	36 - 42"	914 - 1066mm
TSFC48	42 - 48"	1066 - 1240mm
TSFC54	48 - 54"	1240 - 1372mm

\* Larger sizes available upon request



[www.TAG-PIPE.COM](http://www.TAG-PIPE.COM)

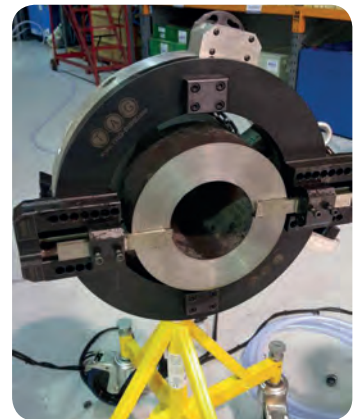
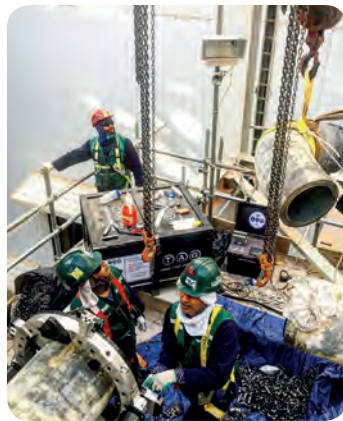
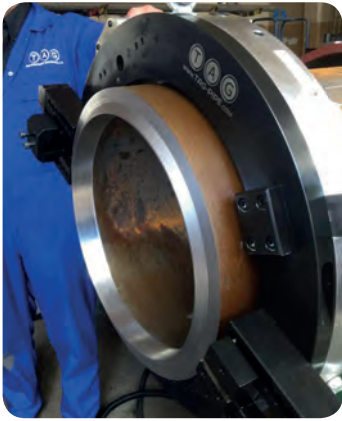
Copyright © 2017 TAG PIPE EQUIPMENT SPECIALISTS LTD. All rights reserved.

Tel: +44 (0)1869 324 144  
E-mail: [sales@tag-pipe.com](mailto:sales@tag-pipe.com)





# EXAMPLES OF JOBS DONE WITH TAG SPLITFRAME CLAMSHELLS



[www.TAG-PIPE.COM](http://www.TAG-PIPE.COM)

Copyright © 2017 TAG PIPE EQUIPMENT SPECIALISTS LTD. All rights reserved.

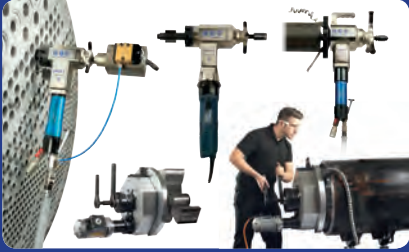
Tel: +44 (0)1869 324 144  
E-mail: [sales@tag-pipe.com](mailto:sales@tag-pipe.com)





# PIPE EQUIPMENT SPECIALISTS LTD PRODUCTS INCLUDE:

### PIPE BEVELLING MACHINES



### PIPE CUTTING MACHINES



### PIPE ALIGNMENT CLAMPS



### PIPE STANDS AND ROLLERS



### PIPE PURGING EQUIPMENT



### PLATE BEVELLERS



North America

Europe

Asia

Middle East

India

Africa

South America

Australia



### TAG Head Office

TAG PIPE EQUIPMENT SPECIALISTS LTD  
Unit 15 & 16 Grendon Industrial Estate, Grendon Underwood,  
Aylesbury, Buckinghamshire, HP18 0QX England  
Tel: +44 (0)1869 324 144 E-mail: sales@tag-pipe.com  
[www.TAG-PIPE.com](http://www.TAG-PIPE.com)

### Your Local Distributor

## Overseas Branches



### USA Branch

TAG PIPE EQUIPMENT SPECIALISTS INC  
527 Michigan Street, South Houston  
Houston, Texas 77587, USA  
Tel: +1 713 660 1427  
E-mail: sales-usa@tag-pipe.com



### Europe Branch

TAG PIPE EQUIPMENT SPECIALISTS BVBA  
Mosten 13, 9160 Lokeren  
Belgium  
Tel: +32 486 46 62 93  
E-mail: sales-europe@tag-pipe.com



### Middle East Branch

TAG PIPE EQUIPMENT SPECIALISTS FZE  
Al Ittihad Street, P.O. Box 3763  
Dubai, United Arab Emirates  
Tel: +971 (0)50 680 3107  
E-mail: sales-me@tag-pipe.com



### India Branch

TAG PIPE EQUIPMENT SPECIALISTS PVT  
Plot No. PAP 3, D 3 Block,  
Chinchwad, Pune 411 019  
Tel: +91 20 6573 4333  
E-mail: sales-india@tag-pipe.com



### Asia Branch

TAG PIPE EQUIPMENT SPECIALISTS PTE  
Yinhe Bridge West, Beichen District  
Tianjin, China  
Tel: +86 139 2001 5417  
E-mail: sales-asia@tag-pipe.com

*Our company policy is one of continuous improvement. Products may change or vary from those illustrated.*

*Copyright © 2017 TAG PIPE EQUIPMENT SPECIALISTS LTD, All rights reserved.*