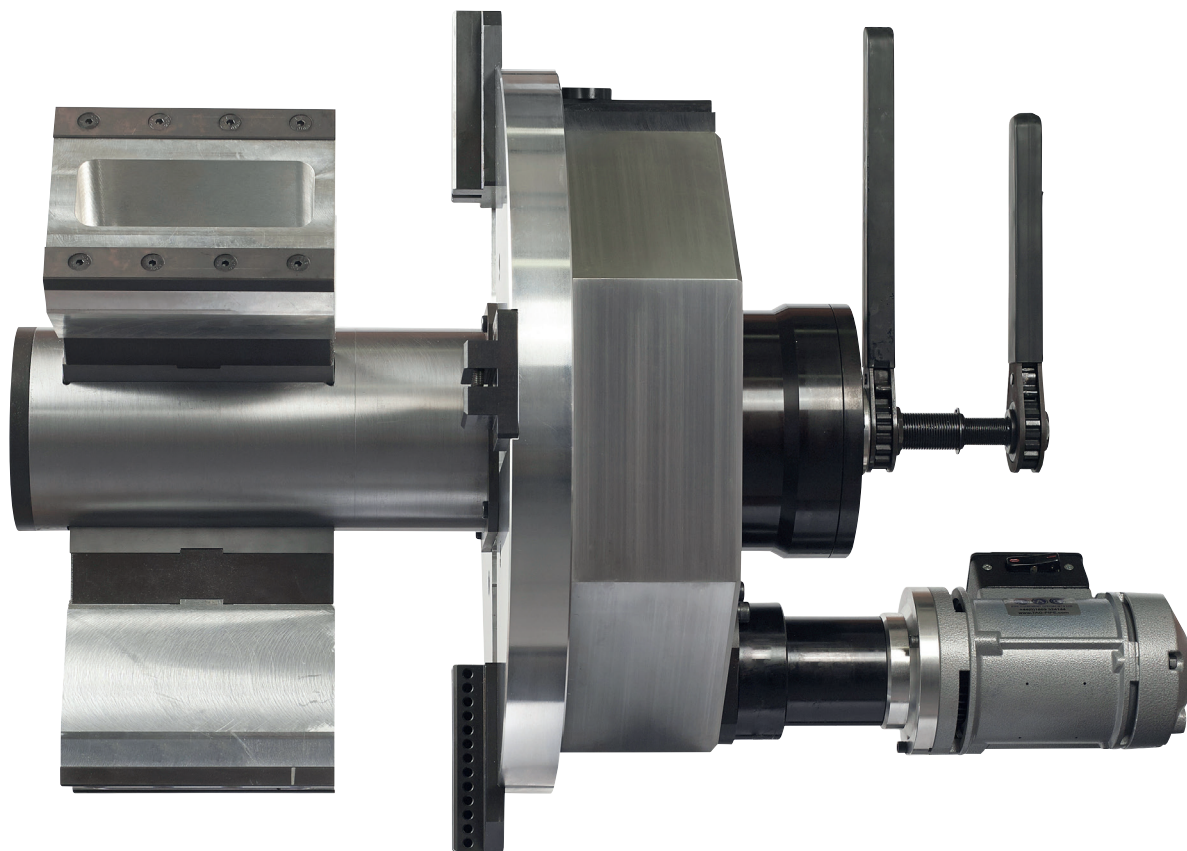




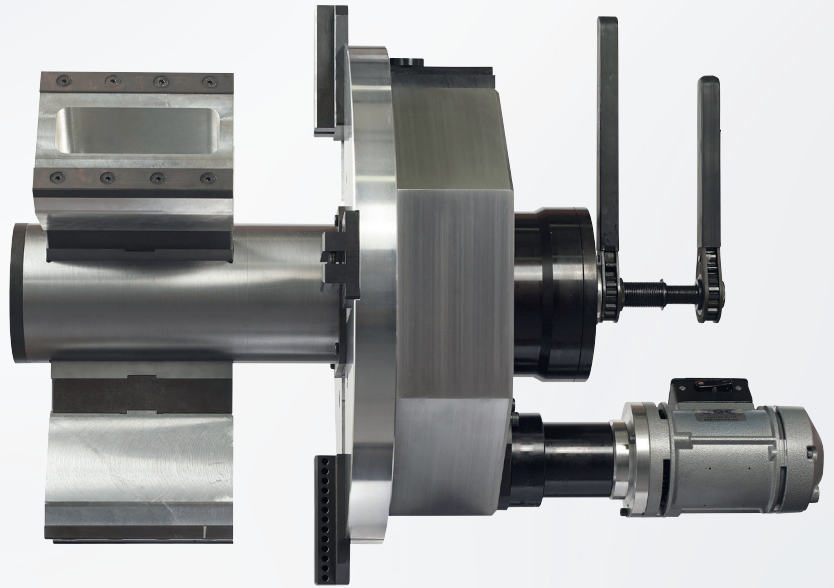
PIPE EQUIPMENT SPECIALISTS LTD

## PREP 24 PIPE BEVELLING 7" to 24"



**RANGE: 180 to 600mm i/d**

- **Functions:** External Beveling  
Internal Beveling  
Facing  
Counter-boring  
Weld Removal  
J-Prepping  
Compound Bevels
- **Materials:** Any kind of Steel  
and Exotic Alloy
- **Power:** Pneumatic (option of  
Electric 110v or 220v)



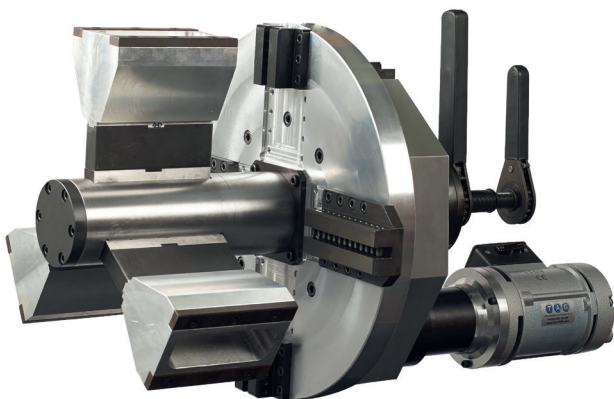
### FEATURES & ADVANTAGES

The PREP 24 is the largest in TAG's new range of a heavy duty mid-large diameter beveling machines.

Offering ratchet i/d jaw locking, as well as Ratchet bevel feed control for effortless heavy wall preps. Offered with a 3.5 HP Pneumatic boasting 12500Nm Torque or 3200 watt electric motor any bevel geometry can be performed within the impressive 7 - 24" range with optional extension kit up to 42".

J-preps, counter boring, and facing can all be performed, simultaneously, using the correct tooling fitted in (up to) 4 heavy duty hardened multi-position tool holders. Due to its light weight, yet unrivalled power, the PREP 24 is ideal for on-site, off shore, nuclear, and other applications where precision welds are required at an incredible value.

The PREP 24, like the PREP 16 and PREP 20 utilise ratchet feed, and locking. This allows effortless setup, and enables the operator to deliver consistent feed with minimal effort.

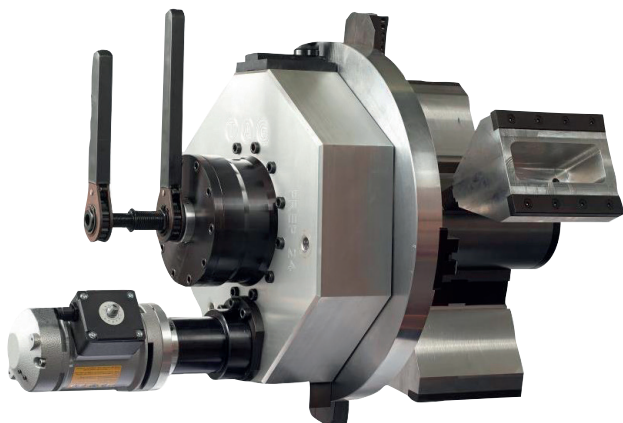


Self-centering 150mm (5.9") one piece locking shaft with built in jaws, eliminates the issue of broken or loosening retaining springs and o-rings.

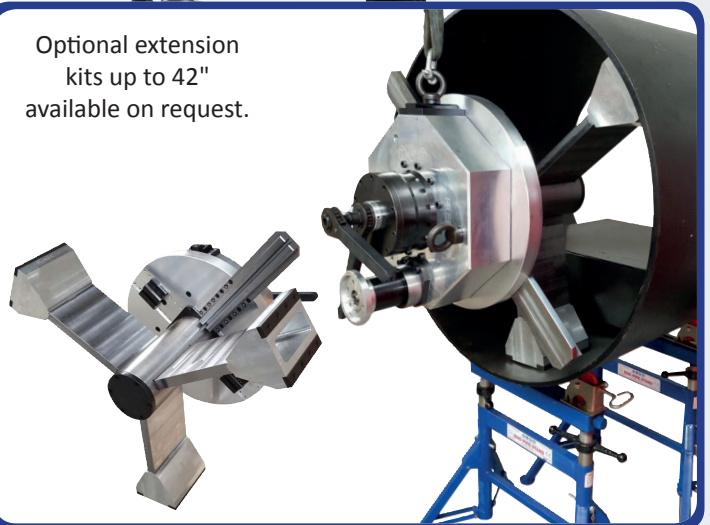


Innovative Wide locking jaws offer 6 point locking from 3 jaws giving superior clamping force for chatter free end preps.





Optional extension  
kits up to 42"  
available on request.



The PREP 24 has unrivalled power and stability,  
utilising a ratchet system for both jaw locking, and bevel feed.



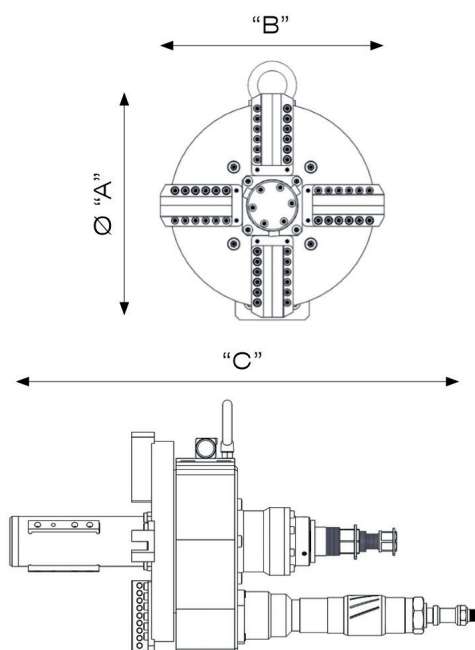
The PREP 24 can also be supplied as an electric version,  
with a 3200 watt heavy duty, in-line or right angle  
motor drive, or a heavy duty 3.5 Hp Pneumatic motor.

# PREP 24 TECHNICAL FEATURES:

DESCRIPTION	MEASUREMENT	PNEUMATIC	ELECTRIC
Part Number	-	TP24P	TP24E
Locking tube range	mm / inch (i/d.)	180 - 600mm / 7 - 23.6" (optional up to 42")	180 - 600mm / 7 - 23.6" (optional up to 42")
Recommended working range	mm / inch (o/d.)	180 - 609mm / 7 - 24.0" (optional up to 42")	180 - 609mm / 7 - 24.0" (optional up to 42")
Idle speed	rpm	5	1 - 5
Torque	nm	12,500	12,500
Length of axial feed	mm / inch	60mm / 2.4"	60mm / 2.4"
Max operating temperature	c°	55	35
Max acoustic radiation	dB	75	75
Pneumatic motor power	hp	3.5	-
Air consumption	cfm	95	-
Air working pressure	psi	90	-
Air hose connection	inches	¾"	-
Electric motor power	watt	-	3200
Voltage	volt	-	110 / 220
Frequency	Hz	-	50 / 60
Unit weight	kg / lbs	225 / 495	225 / 495
Packing dimensions	mm	1060 x 780 x 830mm	1060 x 780 x 830mm
Packing weight	kg / lbs	325 / 715	325 / 715

- Electric 110/220v motors only 3 month warranty period.
- All units are supplied complete with all gripping segments to cover the full range of the machine. Service tools, drawings, instruction manual and warranty certificate are also supplied as standard.
- Each machine is supplied with a protective custom built wooden create.
- We strongly recommend the use of a portable filter lubricator with all our pneumatic models.

## DIMENSIONS



DIM	PNEUMATIC	ELECTRIC
A	610mm	610mm
B	610mm	610mm
C	950mm	865mm

## EXAMPLES OF COMMON CUTTING TOOLS



37.5° Bevel



30° Bevel



37.5+ 10° Compound Bevel



20+ 10° Compound Bevel



15° Internal Bevel



90° Facing

*All shapes, sizes and angles available*



## PIPE EQUIPMENT SPECIALISTS LTD PRODUCTS INCLUDE:

### PIPE BEVELLING MACHINES



### PIPE CUTTING MACHINES



### PIPE ALIGNMENT CLAMPS



### PIPE STANDS AND ROLLERS



### PIPE PURGING EQUIPMENT



### PLATE BEVELLERS



North  
America

Europe

Asia

Middle  
East

India

Africa

South  
America

Australia



### TAG Head Office

**TAG PIPE EQUIPMENT SPECIALISTS LTD**  
Unit 15 & 16 Grendon Industrial Estate, Grendon Underwood,  
Aylesbury, Buckinghamshire, HP18 0QX England  
Tel: +44 (0)1869 324 144 E-mail: [sales@tag-pipe.com](mailto:sales@tag-pipe.com)  
[www.TAG-PIPE.com](http://www.TAG-PIPE.com)

### Your Local Distributor

## Overseas Branches



### USA Branch

TAG PIPE EQUIPMENT SPECIALISTS INC  
527 Michigan Street, South Houston  
Houston, Texas 77587, USA  
Tel: +1 713 660 1427  
E-mail: [sales-usa@tag-pipe.com](mailto:sales-usa@tag-pipe.com)



### Europe Branch

TAG PIPE EQUIPMENT SPECIALISTS BVBA  
Mosten 13, 9160 Lokeren  
Belgium  
Tel: +32 486 46 62 93  
E-mail: [sales-europe@tag-pipe.com](mailto:sales-europe@tag-pipe.com)



### Middle East Branch

TAG PIPE EQUIPMENT SPECIALISTS FZE  
Al Ittihad Street, P.O. Box 3763  
Dubai, United Arab Emirates  
Tel: +971 (0)50 680 3107  
E-mail: [sales-me@tag-pipe.com](mailto:sales-me@tag-pipe.com)



### India Branch

TAG PIPE EQUIPMENT SPECIALISTS PVT  
Plot No. PAP 3, D 3 Block,  
Chinchwad, Pune 411 019  
Tel: +91 20 6573 4333  
E-mail: [sales-india@tag-pipe.com](mailto:sales-india@tag-pipe.com)



### Asia Branch

TAG PIPE EQUIPMENT SPECIALISTS PTE  
Yinhe Bridge West, Beichen District  
Tianjin, China  
Tel: +86 139 2001 5417  
E-mail: [sales-asia@tag-pipe.com](mailto:sales-asia@tag-pipe.com)