

## Rotary Vane Wheel Multi-jet Magnet-drive Dry-dial Cold Water Meter



Superior Quality | Legendary Reliability  
Expert Technical Support | Highest Accuracy & Precision  
Over 10 years of Fluidics Experience

*flow metering at its best...*

## Multijet-Jet Dry Type



Brass coupling for easy installation



Neoprene seal for leakage stopping.



Aqua-Re MJ is IMPELLER (turbine) water meter with magnetic transmission, dry type register for residential application with sizes from Dn15 to Dn40 designed by Iotaflow and meets to the requirements of Directive 2004/22/EC on measuring instruments and of European Standard En14154.

### Characteristics:

All the Materials in contact with water, consciously selected by the known resistance to corrosion.

Cold water meter under current standard for lower than 30°C(T30), but Iotaflow MJ can be used safely in water temperature up to 50°C(T50).

The ROTARY indicator register for the most comfortable reading position of 5 Rollers (Dn40 with 6 Rollers) and Pointers.

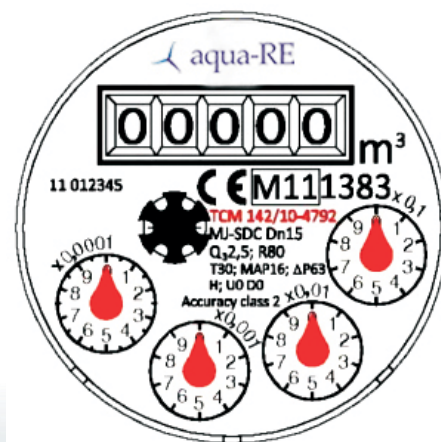
The Impeller is the only moving parts in contact with water permitting the most reliable.

The extra inlet filter at the inlet of the meter body permits cleaning it without breaking the metrological seal.

The conception of the Magnetic Protection to against the external influences.

Non Return Valve to avoid the reserve flow Rate AS OPTION.

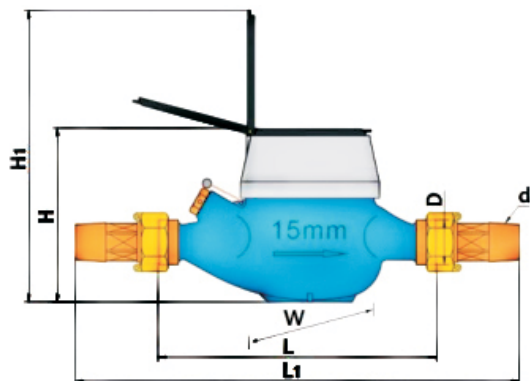
## Dial Plate Design





# flow metering at its best...

## Dimension:



Size	Dn15	Dn20	Dn25	Dn32	Dn40
L	165	190	260	260	300
L1	259	294	380	384	431
D	G3/4B	G1B	G1-1/4B	G1-1/2B	G2B
d	R1/2	R3/4	R1	R1-1/4	R1-1/2
H	103	103	120	120	149
H1	174	174	190	190	215
W	82	82	97	97	113

L1: the total length with connection and the gasket without compression.

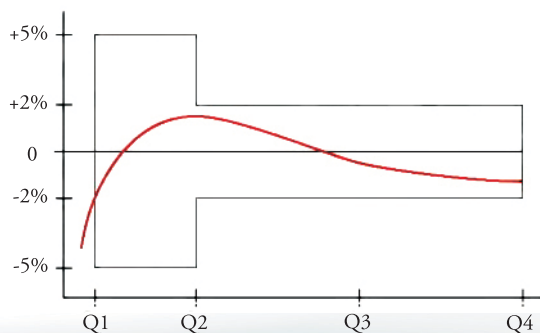
## Main Technical Data:

Size	mm	Dn15	Dn20	Dn25	Dn32	Dn40
R	Q3/Q1	80				
Q4	m <sup>3</sup> /h	3.125	5	7.875	12.5	20
Q3	m <sup>3</sup> /h	2.5	4	6.3	10	16
Q2	l/h	50	80	126	200	320
Q1	l/h	31.25	50	78.75	125	200
Max. Reading	m <sup>3</sup>	99999.9999		999999.9999		
Min Reading	Liter	0.05				
Pressure Loss	ΔP	<63				
Max Pressure	MAP	MAP16				
Max Temperature	°C	T30 or T50				

## Max Permission Error:

From Q1 inclusive up to excluding Q2 is ±5%

From Q2 inclusive up to including Q4 is + 2% for T30 and ± 3% for T50

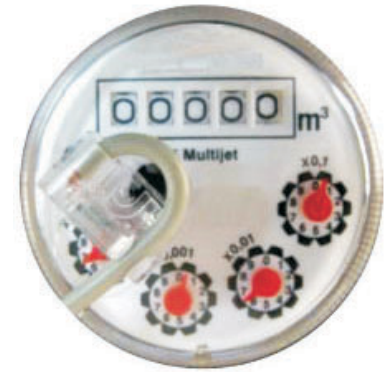


## Option Vision of MJ-SDC

1. Pulse Output Pre-Equipped or Pulse Output Vision:

- ⇒ The Pulse Emitter Device consists of a plastic housing with Reed Switch, and 1.5 mtr cable with 2 cores in Red and Black.
- ⇒ Option with 2 reed switch and 1.5 mtr cable with 3 cores in Red, lack and Blue.
- ⇒ Electric Data:  $V_{max}=24AC/DC$ ;  $I_{max}=0.01A$
- ⇒ Capacity of the Pulse Emitter:

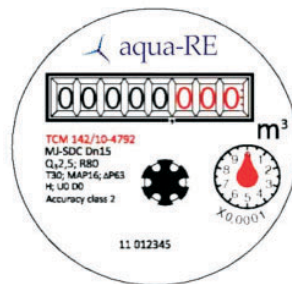
Magnet Position	Liter/Pulse
x0.0001	1
x0.001	10
x0.01	100
x0.1	1000



2. Vision of Copper Can Register with Ip68 protection.



3. Vision of 5 Blacks Roller, 3 Red rollers and 1 Red Indicator pointer for Dn15 to D32 and 6 Blacks Rollers, 2 Red Rollers and 2 Red Indicator pointer for Dn40.



4. Vision of the inclined register.



*New Arrivals*



# IOTAVALVES

**IOTA VALVES - HELP YOU CONTROL!!**



## **Iotaflow Systems Pvt. Ltd.**

A-2/13, Mayapuri Industrial Area, Phase-II

New Delhi - 110064, (India)

Tel:+91-11-4625 4601-07

email: [contact@iotaflow.com](mailto:contact@iotaflow.com), Website: [www.iotaflow.com](http://www.iotaflow.com)