

808nm Diode Laser System

DeLight



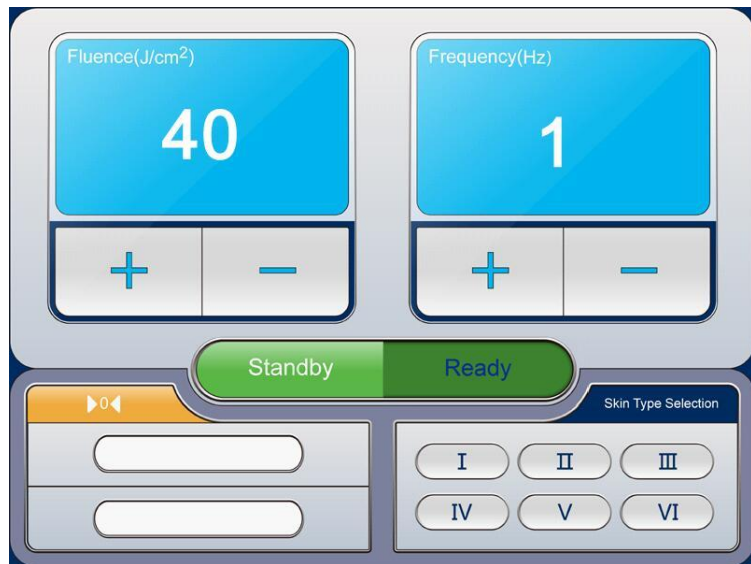
**More Handy and Lighter Design**

**18 Kg Net Weight**

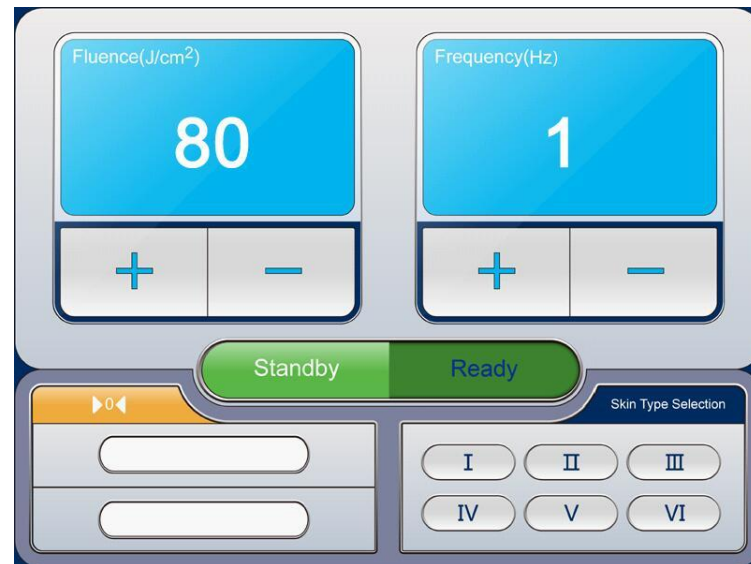




## Two Operation Programs In One Aesthetic & Medical



**Aesthetic Version(Max 40J/cm<sup>2</sup>)**



**Medical Version(Max 80J/cm<sup>2</sup>)**

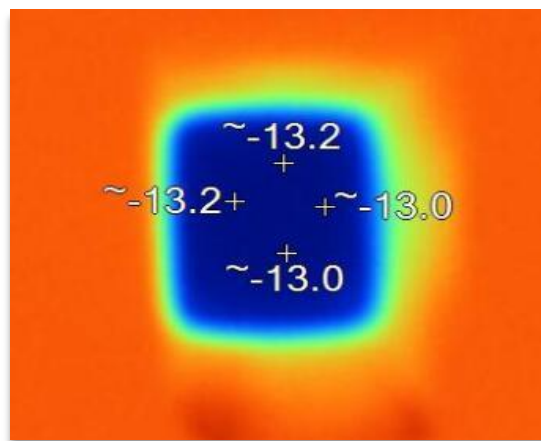
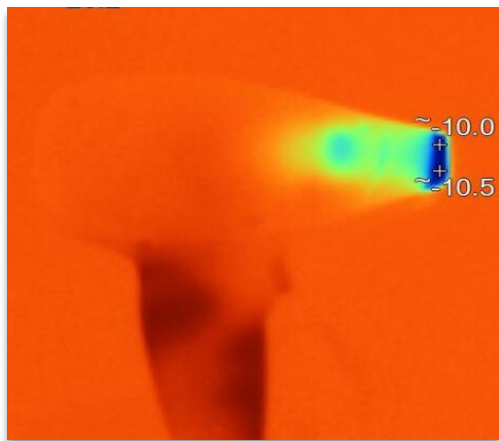


## Three Advantages of Handpiece



### 1. -10 °C Super Chilled Tip

The treatment tip can be chilled at -10°C and the central area of sapphire can reach at -13°C. It can extremely increase the comfort of treatment and deliver more energy without pain.





## Three Advantages of Handpiece



### 2. 1.5 Kg Net Weight,40% Lighter Than The Normal

Small and light design of handpiece makes it feel much more comfortable and relaxed during treatment.

### 3. 10 Million Shots Warranty for Handpiece

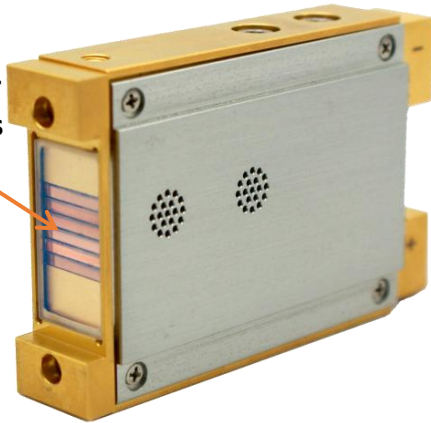
The cutting edge Micro channel technology integrating with the latest version AuSn AuSn solder bonded lasers ensure a high efficiency of cooling and a long lifespan for laser module.

# AuSn Solder Bonded Lasers

## More Reliable Quality, Longer Life Span

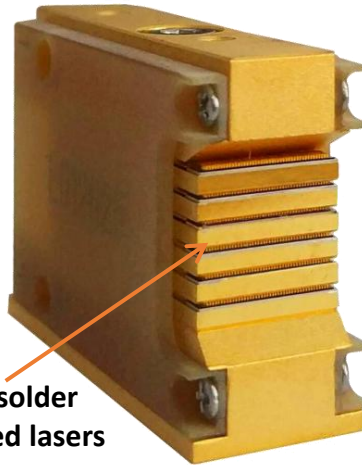


Indium solder bonded lasers

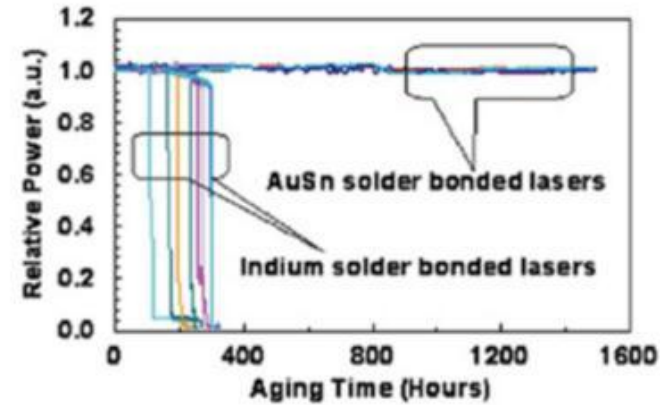


Previous version

AuSn solder bonded lasers

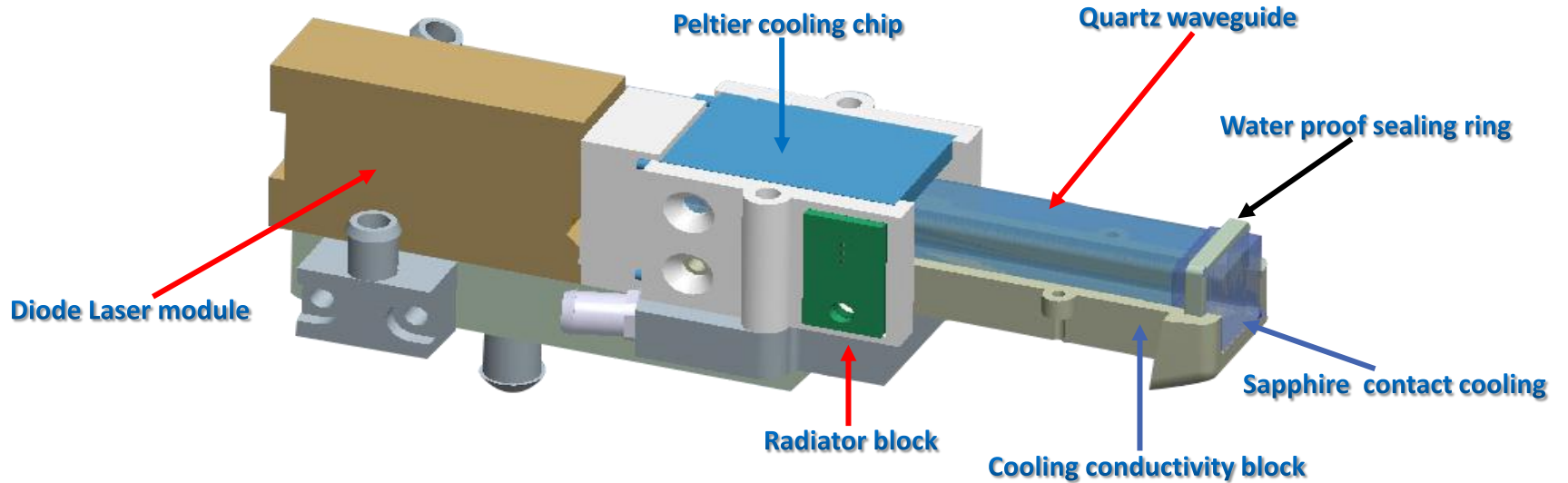


Latest version



Aging time (life span) of New version is much extended

# Latest Design of Light Guide in Handpiece Prevent Condensation Going Inside



## Two New Design of Filters Easy for Installing & Replacing



**Resinic filter used for 5 minutes once per month**



**Particle filter easy for replacing every 3~6 month**



## Technical Specification

**LCD Screen:**10.4 inch color touch screen

**Light Source:**Diode laser module (AnSn bonded)

**Laser Wavelength:**808nm

**Laser Power:**400W(Max),Micro channel,Continuous Working

**Software versin:**Aesthetic & Medical

**Frequency:**Aesthetic version,1-8Hz  
Medical version,1-10Hz

**Warranty:**One year or 10,000,000 shots

**Working Mode:**Frequency modulation and Pulse modulation

**Energy Density:**Aesthetic version-HR:45J/cm<sup>2</sup>;FHR:10J/cm<sup>2</sup>

**Medical version-HR:**80J/cm<sup>2</sup>;FHR:15J/cm<sup>2</sup>

**Spot Size:**12mmx12mm

**Cooling:**Contacting cooling at -10 °C

**Electrical Requirement:**AV220V ±10%,50Hz ±1Hz/AV110V ±10%,60Hz ±1Hz

**Net Weight:**18Kg

**Physical Dimension:**510mmx330mmx250mm;

